



MUNSTER
BOVINE
Collectively Improving Farm Life



Alternative Breeds
2021

AYRSHIRE**GENOMIC****AY4406 VR AUTION EDBO EFECT**Date of Birth: aAa:
15.9.2011 513642Herd Book Number:
RDCFINM00000046305

EBI JAN. 21 SOURCE ICBF		REL
EBI	224	63%
Prod. SI	58	77%
Fert. SI	107	68%
Calv. SI	34	63%
Beef. SI	-16	38%
Maint. SI	32	41%
Mgmt. SI	-7	31%
Health SI	16	36%
PRODUCTION		
Milk KG	179	
Fat	10	Fat % 0.05
Prot	9	Prot % 0.05
Solids	19	

FINISH PROOF JAN 2021	
NTM	22
PRODUCTION	
Milk KG	109
Fat	111 Fat % 103
Prot	118 Prot % 113

OTHER TRAITS	TYPE
Daughter Fert	111 Frame 90
Longevity	114 Udder 94
Calving Ease	99 Feet & Legs 104
Temperament	107
Milkability	110

SIRE: GUNNARSTORP

MS: HEISALAN PONNISTUS

MGS: PÄREPUUSAAREN OSANDUR

BROWN SWISS**GENOMIC****FLECKVEIH****GENOMIC****BS6262 HILLTOP ACRES CART KING ET**Date of Birth: aAa:
24.7.2013Herd Book Number:
BSCHEM120107189674**SEMEX**

EBI JAN. 21 SOURCE ICBF		REL
EBI	-3	8%
Prod. SI	-11	0%
Fert. SI	1	0%
Calv. SI	-18	30%
Beef. SI	-1	30%
Maint. SI	25	30%
Mgmt. SI	-1	0%
Health SI	2	0%
PRODUCTION		
Milk KG	-87	
Fat	-3	Fat % 0.02
Prot	-2	Prot % 0.02
Solids	-5	

CANADIAN PROOF JAN 2021	
LPI	1260
PRODUCTION	
Milk KG	-38
Fat	18 Fat % 0.2
Prot	6 Prot % 0.08
OTHER TRAITS	TYPE
Daughter Fert	99 Final-Score +1
SCC	102 Udder +3
Milking Speed	94 Feet & Legs 0
Temperament	95

SIRE: VOELKERS TD CARTER

MS: SUN-MADE VIGOR

MGS: TOP ACRES E P PREMIUM

SI5043 HONGKONG PPDate of Birth: aAa:
16.11.2016Herd Book Number:
SIMDEUM000951989441**CRV**

EBI JAN. 21 SOURCE ICBF		REL
EBI	61	18%
Prod. SI	26	21%
Fert. SI	25	2%
Calv. SI	-22	53%
Beef. SI	23	33%
Maint. SI	9	32%
Mgmt. SI	-6	3%
Health SI	6	1%
PRODUCTION		
Milk KG	120	
Fat	4	Fat % -0.01
Prot	5	Prot % 0.01
Solids	9	

AUSTRIAN PROOF JAN 2021	
NVI	108
PRODUCTION	
Milk KG	1131
Fat	29 Fat % -0.28
Prot	25 Prot % -0.22
OTHER TRAITS	
Daughter Fert	
Longevity	313
SCC	98
Calving Ease	97

SIRE: HOFFNUNG

MS: POLARBAER

MGS: DAVID PS

FLECKVEIH

S3564 GS RENEGADE

aAa: 534126

Herd Book Number: SIMAUTM000583231928



EBI JAN. 21 SOURCE ICBF		REL
EBI	125	31%
Prod. SI	93	56%
Fert. SI	30	9%
Calv. SI	-17	33%
Beef. SI	23	34%
Maint. SI	-9	33%
Mgmt. SI	-4	8%
Health SI	9	10%
PRODUCTION		
Milk KG	246	
Fat	21	Fat % 0.19
Prot	12	Prot % 0.06
Solids	33	

AUSTRIAN PROOF JAN 2021	
TMI	128
PRODUCTION	
Milk KG	397
Fat	49 Fat % 0.39
Prot	20 Prot % 0.07
OTHER TRAITS	TYPE
Daughter Fert	2 Frame 102
Longevity	109 Udder 118
SCC	104 Feet & Legs 94
Calving Ease	118
Milking Speed	107
Beef	107

SIRE: RUKSI MS: WALDBRAND MGS: GS RAWALF

FLECKVEIH

SI5040 DAX

Date of Birth: 26.2.2013 aAa: 432561

Herd Book Number: SIMDEUM000948300739



EBI JAN. 21 SOURCE ICBF		REL
EBI	102	19%
Prod. SI	59	11%
Fert. SI	36	7%
Calv. SI	-29	62%
Beef. SI	36	45%
Maint. SI	-6	35%
Mgmt. SI	-5	2%
Health SI	10	5%
PRODUCTION		
Milk KG	266	
Fat	15	Fat % 0.07
Prot	9	Prot % 0.00
Solids	24	

AUSTRIAN PROOF JAN 2021	
GZW	121
PRODUCTION	
Milk KG	599
Fat	30 Fat % 0.06
Prot	22 Prot % 0.02
OTHER TRAITS	TYPE
Daughter Fert	104 Frame 107
Longevity	103 Udder 123
SCC	97 Feet & Legs 93
Calving Ease	107
Milking Speed	104
Beef	101

SIRE: DELL MS: VANSTEIN MGS: ROMWEIN

FLECKVEIH

SI7134 ROLLS

Date of Birth: 25.4.2017 aAa: 516342

Herd Book Number: CZ 20928064



EBI JAN. 21 SOURCE ICBF		REL
EBI	62	11%
Prod. SI	34	25%
Fert. SI	41	6%
Calv. SI	-33	8%
Beef. SI	25	9%
Maint. SI	-11	7%
Mgmt. SI	-5	6%
Health SI	9	5%
PRODUCTION		
Milk KG	121	
Fat	6	Fat % 0.02
Prot	6	Prot % 0.03
Solids	12	

AUSTRIAN PROOF JAN 2021	
GZW	135
PRODUCTION	
Milk KG	771
Fat	28 Fat % -0.05
Prot	24 Prot % -0.04
OTHER TRAITS	TYPE
Daughter Fert	113 Frame 90
Longevity	122 Udder 103
SCC	114 Feet & Legs 102
Calving Ease	117
Milking Speed	115
Beef	109

SIRE: WALK MS: WALDBRAND MGS: VANSTEIN

FLECKVEIH

SI7125 ICEBREAKER

Date of Birth: aAa: 465231

Herd Book Number: DE 0953765346



EBI JAN. 21 SOURCE ICBF		REL
EBI	35	11%
Prod. SI	49	18%
Fert. SI	24	5%
Calv. SI	-58	14%
Beef. SI	19	13%
Maint. SI	0	9%
Mgmt. SI	-5	2%
Health SI	6	3%
PRODUCTION		
Milk KG	133	
Fat	8	Fat % 0.05
Prot	7	Prot % 0.05
Solids	16	

AUSTRIAN PROOF JAN 2021	
GZW	137
PRODUCTION	
Milk KG	569
Fat	37 Fat % 0.17
Prot	26 Prot % 0.08
OTHER TRAITS	TYPE
Daughter Fert	116 Frame 85
Longevity	117 Udder 106
SCC	108 Feet & Legs 107
Calving Ease	106
Milking Speed	99
Beef	118

SIRE: IMPERATIV MS: GS VOLLWERT MGS: RUREX *TA

FLECKVEIH

SI6220 VARTA

Date of Birth: aAa:
27.4.2015 435621

Herd Book Number:
SIMDEUM000950350294



EBI JAN. 21 SOURCE ICBF		REL
EBI	93	29%
Prod. SI	77	59%
Fert. SI	41	3%
Calv. SI	-51	31%
Beef. SI	29	32%
Maint. SI	-10	32%
Mgmt. SI	-6	2%
Health SI	14	3%
PRODUCTION		
Milk KG	176	
Fat	15	Fat % 0.14
Prot	10	Prot % 0.07
Solids	25	

AUSTRIAN PROOF JAN 2021	
GZW	130
PRODUCTION	
Milk KG	301
Fat	33 Fat % 0.26
Prot	23 Prot % 0.15
OTHER TRAITS	TYPE
Daughter Fert	112 Frame 99
Longevity	105 Udder 119
SCC	100 Feet & Legs 94
Calving Ease	105
Milking Speed	99
Beef	116

SIRE: VALEUR MS: GS VOGT MGS: WINNIPEG

FLECKVEIH

SI4304 GS WALLIS

aAa:
432516

Herd Book Number:
SIMAUTM000934175619



EBI JAN. 21 SOURCE ICBF		REL
EBI	139	48%
Prod. SI	73	76%
Fert. SI	47	20%
Calv. SI	-1	73%
Beef. SI	25	48%
Maint. SI	-13	44%
Mgmt. SI	-6	20%
Health SI	13	22%
PRODUCTION		
Milk KG	186	
Fat	17	Fat % 0.16
Prot	9	Prot % 0.04
Solids	26	

AUSTRIAN PROOF DEC 2020	
TMI	116
PRODUCTION	
Milk KG	128
Fat	19 Fat % 0.17
Prot	11 Prot % 0.08
OTHER TRAITS	TYPE
Daughter Fert	112 Frame 105
Longevity	102 Udder 103
SCC	114 Feet & Legs 113
Calving Ease	103
Milking Speed	108
Beef	98

SIRE: WALDBRAND MS: GS RUMGO MGS: HERICH

PROVEN

FLECKVEIH

WEISSENSEE

aAa:
354126

Herd Book Number:
SIMAUTM000364261168



EBI JAN. 21 SOURCE ICBF		REL
EBI	43	10%
Prod. SI	49	20%
Fert. SI	29	2%
Calv. SI	-58	15%
Beef. SI	22	8%
Maint. SI	-6	5%
Mgmt. SI	-4	6%
Health SI	10	4%
PRODUCTION		
Milk KG	199	
Fat	7	Fat % -0.01
Prot	9	Prot % 0.04
Solids	16	

AUSTRIAN PROOF DEC 2020	
TMI	133
PRODUCTION	
Milk KG	789
Fat	34 Fat % 0.07
Prot	34 Prot % 0.02
OTHER TRAITS	TYPE
Daughter Fert	0 Frame 100
Longevity	120 Udder 113
SCC	117 Feet & Legs 104
Calving Ease	106
Milking Speed	106
Beef	102

SIRE: WABAN MS: VULCANO MGS: IMPOSIUM

FLECKVEIH

SI6013 GS WIZZARD

aAa:

Herd Book Number:
SIMAUTM000411065428



EBI JAN. 21 SOURCE ICBF		REL
EBI	98	30%
Prod. SI	66	59%
Fert. SI	36	5%
Calv. SI	-41	32%
Beef. SI	27	34%
Maint. SI	5	33%
Mgmt. SI	-5	2%
Health SI	10	3%
PRODUCTION		
Milk KG	98	
Fat	10	Fat % 0.10
Prot	9	Prot % 0.09
Solids	19	

AUSTRIAN PROOF DEC 2020	
TMI	126
PRODUCTION	
Milk KG	25
Fat	16 Fat % 0.19
Prot	17 Prot % 0.20
OTHER TRAITS	TYPE
Daughter Fert	0 Frame 103
Longevity	116 Udder 119
SCC	111 Feet & Legs 106
Calving Ease	101
Milking Speed	103
Beef	120

SIRE: WATNOX MS: GS VULVUS MGS: GS DIONIS

PROVEN

JERSEY**PROVEN****S3148 FDL BARCELONA**Date of Birth: aAa:
10.2.2010 465321Herd Book Number:
JERCANM000109427545

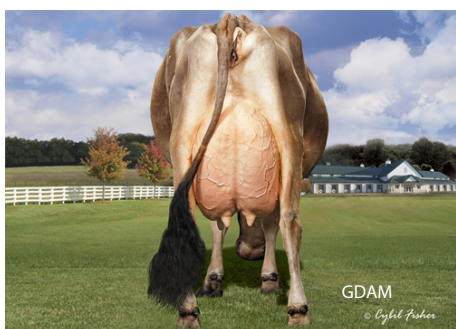
EBI JAN. 21 SOURCE ICBF		REL
EBI	89	65%
Prod. SI	31	87%
Fert. SI	35	59%
Calv. SI	12	68%
Beef. SI	-55	41%
Maint. SI	61	33%
Mgmt. SI	-2	53%
Health SI	6	55%
PRODUCTION		
Milk KG	-361	
Fat	7	Fat % 0.38
Prot	-3	Prot % 0.18
Solids	4	

CANADIAN PROOF JAN 2021		
LPI	1849	
PRODUCTION		
Milk KG	829	
Fat	47 Fat % 0.06	
Prot	38 Prot % 0.09	
OTHER TRAITS		TYPE
Daughter Fert	98	Final Score +5
SCC	103	Udder +6
Milking Speed	103	Feet & Legs +5
Temperament	110	

SIRE: JARS OF CLAY BARNABAS

MS: HAWARDEN IMPULS PREMIER

MGS: GALAXIES CELEBRITY

JERSEY**PROVEN****S3399 GUIMO JUDO**Date of Birth: aAa:
16.8.2016 561423Herd Book Number:
JERCANM000110194382

EBI JAN. 21 SOURCE ICBF		REL
EBI	82	50%
Prod. SI	22	65%
Fert. SI	47	43%
Calv. SI	-4	46%
Beef. SI	-70	32%
Maint. SI	81	32%
Mgmt. SI	1	53%
Health SI	6	56%
PRODUCTION		
Milk KG	-394	
Fat	7	Fat % 0.41
Prot	-5	Prot % 0.16
Solids	2	

CANADIAN PROOF JAN 2021		
LPI	1768	
PRODUCTION		
Milk KG	860	
Fat	45 Fat % 0.00	
Prot	37 Prot % 0.04	
OTHER TRAITS		TYPE
Daughter Fert	103	Final Score +7
SCC	97	Udder +8
Milking Speed	100	Feet & Legs +3
Temperament	102	

SIRE: DP NXLEVEL-ET

MS: HAWARDEN IMPULS PREMIER

MGS: ROCK ELLA PARAMOUNT

JERSEY**PROVEN****S2297 GUIMO JOEL ET**Date of Birth: aAa:
18.5.2011 645231Herd Book Number:
JERCANM000106797223

EBI JAN. 21 SOURCE ICBF		REL
EBI	16	68%
Prod. SI	-13	85%
Fert. SI	18	76%
Calv. SI	-4	55%
Beef. SI	-58	33%
Maint. SI	69	41%
Mgmt. SI	7	45%
Health SI	-2	44%
PRODUCTION		
Milk KG	-613	
Fat	-1	Fat % 0.43
Prot	-11	Prot % 0.18
Solids	-12	

CANADIAN PROOF JAN 2021		
LPI	1317	
PRODUCTION		
Milk KG	-401	
Fat	-13 Fat % 0.1	
Prot	-3 Prot % 0.17	
OTHER TRAITS		TYPE
Daughter Fert	95	Final Score +13
SCC	95	Udder +13
Milking Speed	101	Feet & Legs +11
Temperament	100	

SIRE: TOLLENAARS IMPULS LEGAL 233

MS: ROCK ELLA PARAMOUNT-ET

MGS: BOVI-LACT FIRST PRIZE ET

JERSEY**PROVEN****PVS PINE HAVEN SENIOR**Date of Birth: aAa:
4.10.00 312456Herd Book Number:
JERCANM00010211025

EBI JAN. 21 SOURCE ICBF		REL
EBI	68	93%
Prod. SI	-12	98%
Fert. SI	36	90%
Calv. SI	35	91%
Beef. SI	-59	94%
Maint. SI	61	89%
Mgmt. SI	6	88%
Health SI	1	88%
PRODUCTION		
Milk KG	-425	
Fat	-2	Fat % 0.28
Prot	-8	Prot % 0.12
Solids	-10	

CANADIAN PROOF JAN 2021		
LPI	1054	
PRODUCTION		
Milk KG	-191	
Fat	-13 Fat % -0.04	
Prot	-6 Prot % 0.02	
OTHER TRAITS		TYPE
Daughter Fert	101	Final Score -2
SCC	103	Udder +1
Milking Speed	104	Feet & Legs -6
Temperament	104	

SIRE: GLENHOLME COUNCILLER

MS: ROCK ELLA PERIMETER ET

MGS: SHAMROCK GROVE GEMINI 50R

JERSEY**GENOMIC****JERSEY****PROVEN****JE4762 VJ BALSLEV LOBO CHOKO**Date of Birth: aAa:
30.04.2017Herd Book Number:
JERDNKM000000304568**JE4405 VJ BLANKE JASON JANKO**Date of Birth: aAa:
25.5.2012 423651Herd Book Number:
JERDNKM000000303787

EBI JAN. 21 SOURCE ICBF		REL
EBI	96	52%
Prod. SI	53	67%
Fert. SI	34	42%
Calv. SI	-21	65%
Beef. SI	-70	32%
Maint. SI	83	32%
Mgmt. SI	4	55%
Health SI	13	58%
PRODUCTION		
Milk KG	-587	
Fat	14	Fat % 0.71
Prot	-5	Prot % 0.29
Solids	9	

DANISH PROOF MARCH 2021	
NTM	13
PRODUCTION	
Milk KG	106
Fat	114 Fat % 103
Prot	111 Prot % 105
OTHER TRAITS	TYPE
Daughter Fert	104
Longevity	100
Calving Ease	114
Milkability	112
Temperament	99
Frame	113
Udder	104
Feet & Legs	105

EBI JAN. 21 SOURCE ICBF		REL
EBI	143	71%
Prod. SI	55	83%
Fert. SI	65	71%
Calv. SI	-13	73%
Beef. SI	-53	46%
Maint. SI	68	52%
Mgmt. SI	8	60%
Health SI	13	64%
PRODUCTION		
Milk KG	-423	
Fat	13	Fat % 0.56
Prot	-2	Prot % 0.24
Solids	11	

DANISH PROOF MARCH 2021	
NTM	23
PRODUCTION	
Milk KG	103
Fat	108 Fat % 102
Prot	107 Prot % 105
OTHER TRAITS	TYPE
Daughter Fert	105
Longevity	115
Calving Ease	105
Milkability	98
Temperament	84
Frame	96
Udder	110
Feet & Legs	121

SIRE: VJ TOSTENAES LUTZ LOBO

MS: VJ HUBERT HAVDAL

MGS: DJ KARS

JERSEY**PROVEN****JE2403 VJ HAZARD**Date of Birth: aAa:
29.11.2013 246513Herd Book Number:
JERDNKM000000303970

EBI JAN. 21 SOURCE ICBF		REL
EBI	167	68%
Prod. SI	73	81%
Fert. SI	92	68%
Calv. SI	-12	76%
Beef. SI	-65	49%
Maint. SI	72	39%
Mgmt. SI	9	52%
Health SI	-3	63%
PRODUCTION		
Milk KG	-422	
Fat	18	Fat % 0.65
Prot	-1	Prot % 0.26
Solids	18	

DANISH PROOF MARCH 2021	
NTM	18
PRODUCTION	
Milk KG	106
Fat	117 Fat % 104
Prot	111 Prot % 103
OTHER TRAITS	TYPE
Daughter Fert	102
Longevity	113
Calving Ease	104
Milkability	103
Temperament	98
Frame	101
Udder	100
Feet & Legs	107

SIRE: VJ HICKEY

MS: DJ IZZY

MGS: VJ LECTIO

JERSEY**PROVEN****S2089 VJ HILARIO**Date of Birth: aAa:
9.10.2009 156324Herd Book Number:
JERDNKM000000303406

EBI JAN. 21 SOURCE ICBF		REL
EBI	105	84%
Prod. SI	29	96%
Fert. SI	63	80%
Calv. SI	4	84%
Beef. SI	-59	74%
Maint. SI	60	84%
Mgmt. SI	2	49%
Health SI	7	62%
PRODUCTION		
Milk KG	-361	
Fat	7	Fat % 0.37
Prot	-3	Prot % 0.16
Solids	4	

DANISH PROOF MARCH 2021	
NTM	5
PRODUCTION	
Milk KG	109
Fat	96 Fat % 88
Prot	106 Prot % 92
OTHER TRAITS	TYPE
Daughter Fert	118
Longevity	105
Calving Ease	98
Milkability	85
Temperament	104
Frame	123
Udder	106
Feet & Legs	101

SIRE: Q HIRSE

MS: Q IMPULS

MGS: FYN LEMVIG

JERSEY**S3178 VJ HITMAN**Date of Birth: aAa:
18.8.2015 561Herd Book Number:
JERDNKM000000304254

EBI JAN. 21 SOURCE ICBF		REL
EBI	123	64%
Prod. SI	45	82%
Fert. SI	64	67%
Calv. SI	-6	53%
Beef. SI	-63	35%
Maint. SI	72	34%
Mgmt. SI	5	55%
Health SI	7	57%
PRODUCTION		
Milk KG	-504	
Fat	6	Fat % 0.50
Prot	-2	Prot % 0.28
Solids	4	

DANISH PROOF MARCH 2021	
NTM	6
PRODUCTION	
Milk KG	93
Fat	95 Fat % 105
Prot	103 Prot % 120
OTHER TRAITS	TYPE
Daughter Fert	105 Frame 93
Longevity	110 Udder 127
Calving Ease	98 Feet & Legs 105
Milkability	103
Temperament	112

SIRE: VJ RONHOLM HICKEY HIAN

MS: DJ JASON

MGS: DJ IDORN

JERSEY**PROVEN****JE4276 VJ HOHOLT HILDE HUZAR**Date of Birth: aAa:
27.5.2012 243516Herd Book Number:
JERDNKM000000303788

EBI JAN. 21 SOURCE ICBF		REL
EBI	151	67%
Prod. SI	21	80%
Fert. SI	119	69%
Calv. SI	-2	75%
Beef. SI	-63	40%
Maint. SI	70	37%
Mgmt. SI	3	52%
Health SI	2	62%
PRODUCTION		
Milk KG	-705	
Fat	5	Fat % 0.65
Prot	-9	Prot % 0.30
Solids	-4	

DANISH PROOF MARCH 2021	
NTM	14
PRODUCTION	
Milk KG	95
Fat	96 Fat % 102
Prot	98 Prot % 107
OTHER TRAITS	TYPE
Daughter Fert	115 Frame 110
Longevity	118 Udder 123
Calving Ease	94 Feet & Legs 99
Milkability	97
Temperament	98

SIRE: VJ HILDE

MS: DJ ZUMA

MGS: Q IMPULS

GENOMIC**JERSEY****JE4586 VJ HOEHOLT JERN JAMES**Date of Birth: aAa:
3.1.2016 546132Herd Book Number:
JERDNKM000000304302

EBI JAN. 21 SOURCE ICBF		REL
EBI	107	65%
Prod. SI	71	84%
Fert. SI	11	63%
Calv. SI	5	56%
Beef. SI	-64	42%
Maint. SI	70	40%
Mgmt. SI	4	56%
Health SI	9	59%
PRODUCTION		
Milk KG	-489	
Fat	15	Fat % 0.65
Prot	-1	Prot % 0.30
Solids	15	

DANISH PROOF MARCH 2021	
NTM	17
PRODUCTION	
Milk KG	102
Fat	110 Fat % 105
Prot	108 Prot % 107
OTHER TRAITS	TYPE
Daughter Fert	110 Frame 102
Longevity	100 Udder 101
Calving Ease	96 Feet & Legs 98
Milkability	106
Temperament	105

SIRE: VJ JERN

MS: VJ ZOLT

MGS: DJ HULK

JERSEY**PROVEN****JE2268 VJ HORN**Date of Birth: aAa:
31.5.2010 423651Herd Book Number:
JERDNKM000000303496

EBI JAN. 21 SOURCE ICBF		REL
EBI	139	57%
Prod. SI	82	65%
Fert. SI	53	49%
Calv. SI	-11	76%
Beef. SI	-71	64%
Maint. SI	74	38%
Mgmt. SI	3	38%
Health SI	9	52%
PRODUCTION		
Milk KG	-500	
Fat	18	Fat % 0.68
Prot	0	Prot % 0.31
Solids	18	

DANISH PROOF MARCH 2021	
NTM	19
PRODUCTION	
Milk KG	98
Fat	114 Fat % 112
Prot	108 Prot % 117
OTHER TRAITS	TYPE
Daughter Fert	104 Frame 96
Longevity	103 Udder 92
Calving Ease	110 Feet & Legs 101
Milkability	95
Temperament	99

SIRE: DJ HULK

MS: Q IMPULS

MGS: Q HIRSE

JERSEY**S2087 VJ HUSKY**Date of Birth: aAa:
13.9.2009 534162Herd Book Number:
JERDNKM000000303402

EBI JAN. 21 SOURCE ICBF		REL
EBI	118	84%
Prod. SI	85	97%
Fert. SI	14	85%
Calv. SI	6	87%
Beef. SI	-52	76%
Maint. SI	55	67%
Mgmt. SI	7	27%
Health SI	2	66%
PRODUCTION		
Milk KG	-233	
Fat	17	Fat % 0.45
Prot	5	Prot % 0.22
Solids	22	

DANISH PROOF MARCH 2021	
NTM	-1
PRODUCTION	
Milk KG	108
Fat	110 Fat % 98
Prot	113 Prot % 102
OTHER TRAITS	TYPE
Daughter Fert	88 Frame 115
Longevity	95 Udder 100
Calving Ease	110 Feet & Legs 83
Milkability	100
Temperament	98

SIRE: DJ HULK MS: DJ MAY MGS: Q IMPULS

PRE-ORDER**PROVEN****S1521 VJ LURE**Date of Birth: aAa:
6.12.2007 651423Herd Book Number:
JERDNKM000000303259

EBI JAN. 21 SOURCE ICBF		REL
EBI	176	85%
Prod. SI	75	95%
Fert. SI	42	84%
Calv. SI	27	83%
Beef. SI	-49	79%
Maint. SI	61	71%
Mgmt. SI	9	71%
Health SI	11	77%
PRODUCTION		
Milk KG	-519	
Fat	17	Fat % 0.71
Prot	-1	Prot % 0.32
Solids	16	

DANISH PROOF MARCH 2021	
NTM	3
PRODUCTION	
Milk KG	97
Fat	111 Fat % 111
Prot	104 Prot % 113
OTHER TRAITS	TYPE
Daughter Fert	102 Frame 86
Longevity	100 Udder 81
Calving Ease	105 Feet & Legs 94
Milkability	109
Temperament	104

SIRE: DJ LIRSK MS: Q IMPULS MGS: DJ TRICK

PROVEN**JERSEY****JE2097 VJ JERN**Date of Birth: aAa:
22.2.2010 645213Herd Book Number:
JERDNKM000000303457

EBI JAN. 21 SOURCE ICBF		REL
EBI	114	83%
Prod. SI	71	96%
Fert. SI	24	77%
Calv. SI	8	85%
Beef. SI	-54	85%
Maint. SI	59	68%
Mgmt. SI	3	60%
Health SI	3	65%
PRODUCTION		
Milk KG	-279	
Fat	14	Fat % 0.44
Prot	3	Prot % 0.21
Solids	17	

DANISH PROOF MARCH 2021	
NTM	8
PRODUCTION	
Milk KG	108
Fat	110 Fat % 98
Prot	112 Prot % 102
OTHER TRAITS	TYPE
Daughter Fert	105 Frame 108
Longevity	98 Udder 84
Calving Ease	109 Feet & Legs 103
Milkability	113
Temperament	102

SIRE: DJ JASON MS: Q HIRSE MGS: Q HANDIX

JERSEY**PROVEN****JE4541 SUNSET CANYON DAZZLER-ET**Date of Birth: aAa:
24.1.20 423Herd Book Number:
JERUSAM000117925081

EBI JAN. 21 SOURCE ICBF		REL
EBI	106	70%
Prod. SI	27	88%
Fert. SI	77	79%
Calv. SI	-16	44%
Beef. SI	-75	35%
Maint. SI	84	35%
Mgmt. SI	2	56%
Health SI	8	58%
PRODUCTION		
Milk KG	-376	
Fat	9	Fat % 0.44
Prot	-4	Prot % 0.16
Solids	5	

US PROOF DEC 2020	
NMS	+335
PRODUCTION	
Milk KG	-491
Fat	+1 Fat % +0.12
Prot	-5 Prot % +0.06
OTHER TRAITS	TYPE
Productive Life	+7.0
DPR	4.9
PTAT	1.1

SIRE: HAWARDEN IMPULS PREMIER MS: SCHULTZ DUDLEY RESTORE MGS: Q IMPULS

MILKING SHORTHORN

PROVEN

MS5211 LADY GROVE CONRAD ET

Date of Birth: aAa: 5.11.2012 153624

Herd Book Number: MSHCANM000011682145



EBI JAN. 21 SOURCE ICBF		REL
EBI	-55	46%
Prod. SI	-44	74%
Fert. SI	32	33%
Calv. SI	-44	41%
Beef. SI	-27	36%
Maint. SI	29	36%
Mgmt. SI	-3	9%
Health SI	2	10%
PRODUCTION		
Milk KG	-376	
Fat	-9	Fat % 0.10
Prot	-10	Prot % 0.05
Solids	-19	

CANADIAN PROOF JAN 2021	
LPI	1746
PRODUCTION	
Milk KG	-401
Fat	-13 Fat % 0.1
Prot	-3 Prot % 0.17

OTHER TRAITS	TYPE
Daughter Fert	95 Final-Score +13
SCC	95 Udder +13
Milking Speed	101 Feet & Legs +11
Temperament	100

SIRE: KULP-GEN JURIST ACE-ET

MS: GMC REBEL LOGIC-ET

MGS: GRANDUC PROPHET ET

MILKING SHORTHORN

PROVEN

MS6205 OCEANBRAE ROYAL BENTLEY ET

Date of Birth: aAa: 3.8.2016 423651

Herd Book Number: MSHCANM000012106540



EBI JAN. 21 SOURCE ICBF		REL
EBI	-5	14%
Prod. SI	-46	16%
Fert. SI	50	1%
Calv. SI	-8	30%
Beef. SI	-34	31%
Maint. SI	36	31%
Mgmt. SI	-4	0%
Health SI	-1	1%
PRODUCTION		
Milk KG	-160	
Fat	-9	Fat % -0.06
Prot	-7	Prot % -0.03
Solids	-16	

CANADIAN PROOF JAN 2021	
LPI	1769
PRODUCTION	
Milk KG	-401
Fat	-13 Fat % 0.10
Prot	-3 Prot % 0.17

OTHER TRAITS	TYPE
Daughter Fert	95 Final-Score +13
SCC	95 Udder +13
Milking Speed	101 Feet & Legs +11
Temperament	100

SIRE: ECUAFARM KAISER ROYALTY

MS: B JURIST

MGS: HAUXWELL NOTARY

MILKING SHORTHORN

PROVEN

S3451 LYNMARK ST CLARE

Date of Birth: aAa: 15.6.2013 435126

Herd Book Number: MSHCANM000011751400



EBI JAN. 21 SOURCE ICBF		REL
EBI	-54	30%
Prod. SI	-68	65%
Fert. SI	46	1%
Calv. SI	-32	29%
Beef. SI	-20	31%
Maint. SI	21	30%
Mgmt. SI	-1	0%
Health SI	1	2%
PRODUCTION		
Milk KG	-232	
Fat	-15	Fat % -0.10
Prot	-10	Prot % -0.03
Solids	-25	

CANADIAN PROOF JAN 2021	
LPI	1641
PRODUCTION	
Milk KG	-401
Fat	-13 Fat % 0.1
Prot	-3 Prot % 0.17

OTHER TRAITS	TYPE
Daughter Fert	95 Final-Score +13
SCC	95 Udder +13
Milking Speed	101 Feet & Legs +11
Temperament	100

SIRE: CLAREFIELD MOCHA

MS: GLENBROOK STORM RULER

MGS: HAUXWELL NORTH STAR

MILKING SHORTHORN

GENOMIC

MONASTERORIS NEARLY (RW)

Date of Birth: 01.01.2020

Herd Book Number: SHMIRLM216522231033

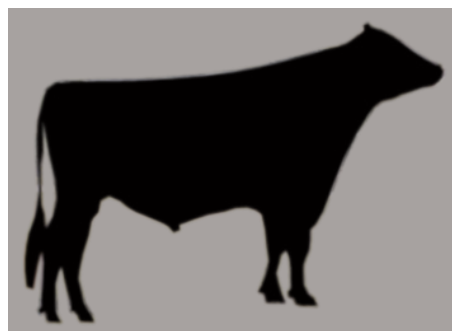


EBI JAN. 21 SOURCE ICBF		REL
EBI	12	17%
Prod. SI	-21	16%
Fert. SI	28	5%
Calv. SI	4	45%
Beef. SI	-20	34%
Maint. SI	23	33%
Mgmt. SI	-2	3%
Health SI	0	6%
PRODUCTION		
Milk KG	-86	
Fat	-3	Fat % 0.00
Prot	-4	Prot % -0.02
Solids	-7	

SIRE: CLAREFIELD MOCHA

MS: GLENBROOK STORM RULER

MGS: HAUXWELL NORTH STAR

MRI**GENOMIC****MRI****PROVEN****MY4617 DE VINKENHOF LAKE**Date of Birth: aAa:
20.4.2016 435261Herd Book Number:
MRYNLDM000658102156**S2112 MARCELLO**Date of Birth: aAa:
22.7.2011Herd Book Number:
MRYNLDM000549833402

EBI JAN. 21 SOURCE ICBF		REL
EBI	114	30%
Prod. SI	11	27%
Fert. SI	58	21%
Calv. SI	26	71%
Beef. SI	2	38%
Maint. SI	23	34%
Mgmt. SI	-7	6%
Health SI	1	17%
PRODUCTION		
Milk KG	-86	
Fat	-1	Fat % 0.06
Prot	1	Prot % 0.07
Solids	0	

DUTCH PROOF JAN 2021		
NVI	9	
PRODUCTION		
Milk KG	42	
Fat	22	Fat % 0.31
Prot	4	Prot % 0.04
OTHER TRAITS		TYPE
SCC	96	Frame 100
Calving Ease	100	Udder 99
Milking Speed	103	Feet & Legs 100
Temperament	102	

EBI JAN. 21 SOURCE ICBF		REL
EBI	146	71%
Prod. SI	10	76%
Fert. SI	100	65%
Calv. SI	15	82%
Beef. SI	10	89%
Maint. SI	18	63%
Mgmt. SI	0	38%
Health SI	-7	58%
PRODUCTION		
Milk KG	-151	
Fat	-2	Fat % 0.07
Prot	0	Prot % 0.09
Solids	-2	

DUTCH PROOF JAN 2021		
NVI	-68	
PRODUCTION		
Milk KG	-447	
Fat	-2	Fat % 0.30
Prot	-11	Prot % 0.09
OTHER TRAITS		TYPE
SCC		Frame 99
Calving Ease	95	Udder 101
Milking Speed	109	Feet & Legs 97
Temperament	103	

SIRE: JARON

MS: BALTIMORE

MGS: DANIEL VD VINKENHOF

SIRE: BALTIMORE

MS: MATTHIJS

MGS: HERBERT

MRI**PROVEN****MY4757 MEERVELDER RODA**Date of Birth: aAa:
12.2.2016Herd Book Number:
MRYNLDM000587374994

EBI JAN. 21 SOURCE ICBF		REL
EBI	112	27%
Prod. SI	19	25%
Fert. SI	71	20%
Calv. SI	-6	56%
Beef. SI	5	34%
Maint. SI	20	34%
Mgmt. SI	-7	8%
Health SI	8	17%
PRODUCTION		
Milk KG	-117	
Fat	0	Fat % 0.09
Prot	2	Prot % 0.11
Solids	1	

DUTCH PROOF JAN 2021		
NVI	71	
PRODUCTION		
Milk KG	77	
Fat	10	Fat % 0.10
Prot	5	Prot % 0.03
OTHER TRAITS		TYPE
SCC	98	Frame 102
Calving Ease	89	Udder 102
Milking Speed	104	Feet & Legs 102
Temperament	104	

EBI JAN. 21 SOURCE ICBF		REL
EBI	58	54%
Prod. SI	21	68%
Fert. SI	7	45%
Calv. SI	28	68%
Beef. SI	-12	63%
Maint. SI	21	39%
Mgmt. SI	-6	5%
Health SI	0	37%
PRODUCTION		
Milk KG	-40	
Fat	1	Fat % 0.04
Prot	3	Prot % 0.07
Solids	3	

DUTCH PROOF JAN 2021		
NVI	-21	
PRODUCTION		
Milk KG	111	
Fat	13	Fat % -0.18
Prot	4	Prot % 0.00
OTHER TRAITS		TYPE
SCC	98	Frame 97
Calving Ease	97	Udder 101
Milking Speed	95	Feet & Legs 99
Temperament	98	

SIRE: DE VINKENHOF KOEN

MS: DZ ALZON DIMAN

MGS: GUIDO

SIRE: MEERVELDER ALBERT

MS: MATTHIJS

MGS: GUIDO

MRI**GENOMIC****DANISH RED****PROVEN****S3118 WOESTE POLDER JARKO**Date of Birth: aAa:
19.6.2014 453621Herd Book Number:
MRYNLDM000866025047**RD4575 VR FONSECA FILUR**Date of Birth: aAa:
17.3.2016 234Herd Book Number:
RDCDNKM00000037887

EBI JAN. 21 SOURCE ICBF		REL
EBI	75	43%
Prod. SI	4	48%
Fert. SI	46	41%
Calv. SI	5	46%
Beef. SI	4	58%
Maint. SI	14	39%
Mgmt. SI	-3	7%
Health SI	5	20%
PRODUCTION		
Milk KG	1	
Fat	-4	Fat % -0.06
Prot	2	Prot % 0.03
Solids	-2	

DUTCH PROOF JAN 2021		
NVI	51	
PRODUCTION		
Milk KG	-21	
Fat	6	Fat % 0.11
Prot	17	Prot % 0.28
OTHER TRAITS		TYPE
SCC	100	Frame 94
Calving Ease	98	Udder 106
Milking Speed	99	Feet & Legs 99
Temperament	97	

EBI JAN. 21 SOURCE ICBF		REL
EBI	173	43%
Prod. SI	87	67%
Fert. SI	58	24%
Calv. SI	18	65%
Beef. SI	-21	36%
Maint. SI	26	36%
Mgmt. SI	-1	11%
Health SI	5	15%
PRODUCTION		
Milk KG	88	
Fat	19	Fat % 0.26
Prot	9	Prot % 0.10
Solids	28	

DANISH PROOF MARCH 2021		
NTM	20	
PRODUCTION		
Milk KG	102	
Fat	127	Fat % 130
Prot	114	Prot % 118
OTHER TRAITS		TYPE
Daughter Fert	92	Frame 118
Longevity	114	Udder 109
Calving Ease	104	Feet & Legs 102
Milkability	111	
Temperament	117	

SIRE: REMCO

MS: CORN REDGOLD

MGS:

SIRE: VR FAVRE FONSECA

MS: VR LAKIALAN ULLIMULLI UUDIN

MGS: R FISTRUP

DANISH RED**GENOMIC****SWEDISH RED****PROVEN****RD5301 VR RLAKE P FANOF P**Date of Birth: aAa:
21.9.2017 234Herd Book Number:
RDCDNKM000000038050

EBI JAN. 21 SOURCE ICBF		REL
EBI	117	24%
Prod. SI	38	23%
Fert. SI	35	16%
Calv. SI	42	56%
Beef. SI	-19	31%
Maint. SI	19	31%
Mgmt. SI	-4	2%
Health SI	7	1%
PRODUCTION		
Milk KG	63	
Fat	6	Fat % 0.05
Prot	5	Prot % 0.06
Solids	11	

DANISH PROOF MARCH 2021		
NTM	25	
PRODUCTION		
Milk KG	103	
Fat	109	Fat % 118
Prot	114	Prot % 118
OTHER TRAITS		TYPE
Daughter Fert	111	Frame 99
Longevity	114	Udder 105
Calving Ease	109	Feet & Legs 111
Milkability	112	
Temperament	93	

EBI JAN. 21 SOURCE ICBF		REL
EBI	85	96%
Prod. SI	4	99%
Fert. SI	48	92%
Calv. SI	20	96%
Beef. SI	-11	99%
Maint. SI	15	97%
Mgmt. SI	-1	94%
Health SI	10	91%
PRODUCTION		
Milk KG	-136	
Fat	-1	Fat % 0.07
Prot	-1	Prot % 0.06
Solids	-2	

DANISH PROOF MARCH 2021		
NTM	-10	
PRODUCTION		
Milk KG	95	
Fat	95	Fat % 100
Prot	93	Prot % 98
OTHER TRAITS		TYPE
Daughter Fert	87	Frame 99
Longevity	97	Udder 93
Calving Ease	99	Feet & Legs 89
Milkability	105	
Temperament	95	

SIRE: VR FELIPE FLAKE

MS: VIKING RED EDBO EJSTRUP

MGS: R FACET

SIRE: 3-907 T-BRUNO SRB

MS: JAGARBO

MGS: MELLANBERG

**NORWEGIAN
RED**

PROVEN

**NORWEGIAN
RED**

PROVEN

AKM ASKIM

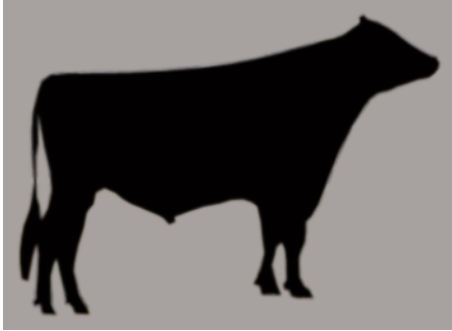
Date of Birth: aAa:
19.2.2002

Herd Book Number:
RDCNORM000000010100

FJD FLATJORD

Date of Birth: aAa:
4.8.1997

Herd Book Number:
RDCNORM000000005388



EBI JAN. 21 SOURCE ICBF		REL
EBI	181	88%
Prod. SI	8	98%
Fert. SI	129	76%
Calv. SI	19	91%
Beef. SI	-7	94%
Maint. SI	27	92%
Mgmt. SI	-7	86%
Health SI	12	83%
PRODUCTION		
Milk KG	-162	
Fat	-2	Fat % 0.07
Prot	0	Prot % 0.09
Solids	-3	

EBI JAN. 21 SOURCE ICBF		REL
EBI	197	94%
Prod. SI	23	98%
Fert. SI	121	89%
Calv. SI	23	94%
Beef. SI	8	97%
Maint. SI	11	96%
Mgmt. SI	0	92%
Health SI	10	90%
PRODUCTION		
Milk KG	-233	
Fat	4	Fat % 0.24
Prot	-1	Prot % 0.12
Solids	3	

SIRE: NYTRÿEN

MS: NYLOKKEN

MGS: E.REVHEIM

**NORWEGIAN
RED**

PROVEN

HGA HAGA

Date of Birth: aAa:
13.7.2003

Herd Book Number:
RDCNORM000000010278



SIRE: J.HUSVEG

MS: K. FREDVANG

MGS: F.GRANMOEN

**NORWEGIAN
RED**

PROVEN

HUG HAUGSETH

Date of Birth: aAa:
20.8.2001

Herd Book Number:
RDCNORM000000010032



EBI JAN. 21 SOURCE ICBF		REL
EBI	159	93%
Prod. SI	16	98%
Fert. SI	103	89%
Calv. SI	13	93%
Beef. SI	2	96%
Maint. SI	12	91%
Mgmt. SI	6	81%
Health SI	7	84%
PRODUCTION		
Milk KG	70	
Fat	2	Fat % -0.02
Prot	3	Prot % 0.02
Solids	5	

EBI JAN. 21 SOURCE ICBF		REL
EBI	157	91%
Prod. SI	6	98%
Fert. SI	78	87%
Calv. SI	36	90%
Beef. SI	8	95%
Maint. SI	5	91%
Mgmt. SI	9	79%
Health SI	15	77%
PRODUCTION		
Milk KG	20	
Fat	0	Fat % -0.02
Prot	2	Prot % 0.01
Solids	1	

SIRE: ULSAKER

MS: RISTITTEN JOHDE

MGS: NYLOKKEN

SIRE: KJAER

MS: RISA

MGS: E.TVEITAN

**NORWEGIAN
RED**

PROVEN

LEV LEKVE

Date of Birth: aAa:
19.9.1999

Herd Book Number:
RDCNORM00000005689



EBI JAN. 21 SOURCE ICBF		REL
EBI	145	97%
Prod. SI	25	99%
Fert. SI	57	93%
Calv. SI	41	97%
Beef. SI	10	99%
Maint. SI	9	98%
Mgmt. SI	-4	97%
Health SI	8	96%
PRODUCTION		
Milk KG	-252	
Fat	2	Fat % 0.22
Prot	0	Prot % 0.15
Solids	2	

SIRE: LARSGARD

MS: K. FREDVANG

MGS: F.BAKKEN

**NORWEGIAN
RED**

PROVEN

PZP PRESTANGEN 10923

Date of Birth: aAa:
25.5.2008

Herd Book Number:
RDCNORM000000010923



EBI JAN. 21 SOURCE ICBF		REL
EBI	209	68%
Prod. SI	16	71%
Fert. SI	136	73%
Calv. SI	22	75%
Beef. SI	13	81%
Maint. SI	7	41%
Mgmt. SI	4	31%
Health SI	12	52%
PRODUCTION		
Milk KG	24	
Fat	-1	Fat % -0.02
Prot	3	Prot % 0.04
Solids	3	

SIRE: HAUGSET

MS: RYGGVOLD

MGS: KREJSTAD

**NORWEGIAN
RED**

PROVEN

LEK LEKVE 10714

Date of Birth: aAa:
13.10.2006

Herd Book Number:
RDCNORM000000010714



EBI JAN. 21 SOURCE ICBF		REL
EBI	144	83%
Prod. SI	13	94%
Fert. SI	84	80%
Calv. SI	26	82%
Beef. SI	5	89%
Maint. SI	16	60%
Mgmt. SI	-15	59%
Health SI	15	66%
PRODUCTION		
Milk KG	-167	
Fat	0	Fat % 0.11
Prot	0	Prot % 0.09
Solids	0	

SIRE: 5654 OLSTAD

MS: FAAREN

MGS: SKJÆRET

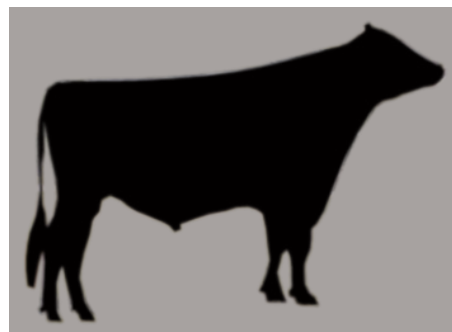
**NORWEGIAN
RED**

PROVEN

RTA RAASTAD

Date of Birth: aAa:
2.4.2002

Herd Book Number:
RDCNORM000000010115



EBI JAN. 21 SOURCE ICBF		REL
EBI	138	96%
Prod. SI	21	99%
Fert. SI	59	92%
Calv. SI	20	97%
Beef. SI	2	99%
Maint. SI	13	98%
Mgmt. SI	12	94%
Health SI	11	93%
PRODUCTION		
Milk KG	-45	
Fat	3	Fat % 0.09
Prot	2	Prot % 0.06
Solids	5	

SIRE: BRANDSTADMOEN

MS: HILSTAD

MGS: NYTRØEN

**NORWEGIAN
RED**

PROVEN

RRV RAVN

Date of Birth: aAa:
13.12.2006 135246

Herd Book Number:
RDCNORM000000010739



EBI JAN. 21 SOURCE ICBF		REL
EBI	118	87%
Prod. SI	43	95%
Fert. SI	50	83%
Calv. SI	11	83%
Beef. SI	1	89%
Maint. SI	8	90%
Mgmt. SI	-6	66%
Health SI	11	72%
PRODUCTION		
Milk KG	-33	
Fat	3	Fat % 0.08
Prot	6	Prot % 0.12
Solids	9	

SIRE: 5654 OLSTAD

MS: GALDE

MGS: RISA

MONTBELLARDE

PROVEN

MO4194 JORDREN JB

aAa:
156324

Herd Book Number:
MONFRAM007251982851



EBI JAN. 21 SOURCE ICBF		REL
EBI	26	56%
Prod. SI	23	81%
Fert. SI	14	33%
Calv. SI	-28	66%
Beef. SI	22	55%
Maint. SI	0	40%
Mgmt. SI	-14	47%
Health SI	9	53%
PRODUCTION		
Milk KG	59	
Fat	6	Fat % 0.06
Prot	3	Prot % 0.01
Solids	8	

SIRE: ELASTAR

MS: DIDEROT

MGS: REDON

MONTBELLARDE

PROVEN

MO2382 HARPON JB

aAa:
462531

Herd Book Number:
MONFRAM003921920863



EBI JAN. 21 SOURCE ICBF		REL
EBI	-34	59%
Prod. SI	59	84%
Fert. SI	-3	34%
Calv. SI	-84	67%
Beef. SI	1	66%
Maint. SI	7	47%
Mgmt. SI	-13	57%
Health SI	-1	56%
PRODUCTION		
Milk KG	206	
Fat	8	Fat % 0.01
Prot	10	Prot % 0.06
Solids	19	

SIRE: FLIPEX JB

MS: TILLEUL JB

MGS: JUVISY

FRENCH PROOF JAN 2021	
ISU	136
PRODUCTION	
Milk KG	100
Fat	33 Fat % 3.5
Prot	11 Prot % 0.9
OTHER TRAITS	
Reproduction	1.7
Prod Life	0.5
SCC	0.9
Calving Ease	90%
Milking Speed	107
Temperament	95
Type	98

FRENCH PROOF JAN 2021	
ISU	144
PRODUCTION	
Milk KG	670
Fat	34 Fat % 2.5
Prot	48 Prot % 1.5
OTHER TRAITS	
Reproduction	-1.4
Prod Life	-0.1
SCC	0.4
Calving Ease	88%
Milking Speed	102
Temperament	100
Type	112

OUR TEAM

Farm Relationship Managers. *For breeding advice & technician service queries.*



Michael Clohessy
086 6054723
Limerick



Jerome Leen
087 2529895
Kerry, North Cork



Enda O'Gorman
086 8352700
Clare & Galway



Eustace Burke
086 0274558
South Cork



Joe O'Flynn
086 4030646
*North Cork,
Cork City North*



Declan Keating
086 8164024
West Cork



Brendan Scully
086 4126727
*East Cork,
West Waterford,*

Breeding Advisors.



Joe Tobin
086 8125441
*East Cork,
West Waterford,
Tipperary*



James Egan
086 3650665
North Kerry



Ben Slee
087 2902031
Tipperary



Kevin Dillon
086 2583513
West Cork



Tom Tobin
087 2758061
Cork City South



Anthony Buckley
086 344 0642
West Cork



Donal Coppinger
087 3159166
Galway



**MUNSTER
BOVINE**

Collectively Improving Farm Life

A.I. Calls

Dairygold 1850 500 321
Bandon 023 883 2828
Kerry/Clare & Galway 1890 28 1000

Main Office

Ballyvorisheen, Mallow, Co. Cork
t 022 43228 e info@munsterbovine.ie
w www.munsterbovine.ie

