



MUNSTER
BOVINE

Collectively Improving Farm Life



Suckler / Pedigree Beef Sires
2019 / 2020

LIMOUSIN

1	LM4591	CROSS LIAM
2	LM4217	MOONDHARRIG KNELL
3	LM5488	MIRO PP
4	ZAG	CASTLEVIEW GAZELLE
5	ADX	ARDLEA DAN
5	LM2065	CASIMIR 65
6	LM2388	DIMOIWII
6	LM4360	AHERLA K 7 P
7	LM2117	TOMSCHOICE IMPERIAL
7	LM2206	ELITE ICE CREAM ET

CHAROLAIS

8	CH4321	LAPON
9	CH4251	GOLDSTAR LUDWIG
10	FWO	FLEETWOOD
11	CH5482	DEMON
12	CH4082	FIRODA JASON
13	CH4252	CAVELANDS LEVI
14	CH4320	LISERON
15	CH4637	CLENAGH MISCHIEF 2 ET
15	FSZ	FISTON

BELGIAN BLUE

16	BB4498	DELURE DE LA BEOLE
17	BB5223	NOX DE L'ORGELOT
18	BB4324	BOROSIDE JAGERBOMB ET
19	RWS	ROSEMOUNT CASH ET
19	FSN	FOLON DE CRAS AVERNAS

SIMMENTAL

20	SI4250	LIS-NA-RI GUCCI
21	SI4350	RUBYJEN HERE'S JOHNNY
21	SI4595	BEARNA-DHEARG HONDA 50
22	SI2469	LISNACRANN FIFTY CENT
22	SI4347	LEEHERD HARRY 286
23	SI2152	CURAHEEN EARP
23	SI4083	CLONAGH FROSTY KING ET

ABERDEEN ANGUS

24	AA5280	COOLRAIN PATRIARCH
25	AA4640	HW FARGHAL T516
26	AA2309	ST AODAIN L MASTER
27	AA4089	INTELAGRI MATTEO E.T.
27	AA4088	INTELAGRI MAVERICK E.T.
28	AA4087	GOULDING MAN OH MAN
28	AA4323	TREE BRIDGE POWYS S589

SALERS

29	SA4461	SPIDDAL PAT
----	--------	-------------

SALERS

29	SA4604	KNOTTOWN ROY
----	--------	--------------

SHORTHORN

30	SH4748	BUNCRAGGY FIRE FOX (RO)(P)
31	EMS	DOON ERASMUS (RLW)
31	SH4209	STONEYROD HALCYON MATRIX (P)

HEREFORD

32	HE4344	ALLOWDALE RAMBO 475
32	HE5346	FISHER 1 PROFILE P456
33	HE5452	ALLOWDALE AXEL
33	HE5298	ALLOWDALE APACHE

PARTHENAISE

34	PT4570	KILGULBIN PARTHENAISE LOGAN
----	--------	-----------------------------

BLONDE D'AQUITAINE

34	BA2308	STONELEA INZAGI
----	--------	-----------------

AUBRAC

35	AU4683	TURLOUGHMORE MAGNIFICENT
35	AU4563	JOHNSTOWN LOYD 1039
36	Ensuring AI Technician Safety	
38	REPLACEMENT SIRES	

PRE-ORDER**LIMOUSIN**

43	LM4351	GRENACHE
43	LM2242	EDAKKYA
44	S3104	GOLDIES JACKPOT
44	LM4058	LODGE HAMLET
45	S3253	KARLOS PP

CHAROLAIS

45	VMO	VOIMO
46	CH2215	ARTOIS
46	CH2217	CASTOR

ABERDEEN ANGUS

47	S2330	COONAMBLE ELEVATOR E1
----	-------	-----------------------

SALERS

47	SA4059	BEGUIN
48	Vasectomised Bull	
49	Paint Sticks/Crayons	
50	Scratch Cards	
51	Maximise Success of AI in Suckler Cows	
52	Maximise Success of AI in Maiden Heifers	
53	Benefits of Synchronisation	

SYMBOLS EXPLAINED

For each breed, the superior sires for weanling production, finishing and replacements are clearly labelled. These labels are our stamp of approval.



WEANLING

The superior sires for weanling production are the sires that will deliver the highest value weanlings. Progeny of these sires have excellent weight and muscle development at the weaning stage. The sires recommended for weanling production in this catalogue rank highly for weaning weight and calf quality, at high reliabilities. They consistently produce numerous champions and top prices at weanling show and sales around the country.



FINISHING

The superior sires for finishing are the sires which will efficiently produce heavy, high grade, high value carcasses. The sires recommended for finishing in this catalogue rank highly for carcass weight and carcass conformation at high reliabilities



PEDIGREE ROYALTY

A pedigree royalty fee applies to these sires at the time of registration of pedigree progeny. This is collected by the relevant breed society. No fee applies to commercial calves.



REPLACEMENT

The superior sires for replacements are those which will deliver solid, hard-working cows. Daughters have good milk, fertility, calving ability, temperament, are easily maintained and are functionally correct in order to last the long winters inside. The sires recommended in this catalogue for replacement are well proven.



PROOF PENDING

These are bulls which are awaiting a calving survey

LM4591 CROSS LIAM

Date of Birth: 17/05/2016

MYOSTATIN STATUS (MH): +/+ (2F94L)

Herd Book Number:

LIMIRLM272344010372



Star Rating (within breed)	Economic Indexes	Euro value per progeny	Index reliability	Star Rating (across all beef breeds)
★★★★★	REPLACEMENT	€154	48% (Average)	★★★★★
★☆☆☆☆	TERMINAL	€105	48% (Average)	★☆☆☆☆

Source ICBF July 19

Star Rating (within breed)	Key profit traits	Index value	Trait reliability	Star Rating (across all beef breeds)
EXPECTED PROGENY PERFORMANCE				
	Calving difficulty (% 3 & 4)	5%	56% (Average)	Calving Records: 11
★★★☆☆	Gestation Length (days)	4d	51% (Average)	★★★☆☆
★★★★★	Docility (1-5 scale)	0.06 scale	48% (Average)	★★★★★
★★★☆☆	Carcass weight (kg)	19.4kg	47% (Average)	★★★☆☆
★★★☆☆	Carcass conformation (1-15 scale)	2.05 scale	47% (Average)	★★★☆☆
EXPECTED DAUGHTER BREEDING PERFORMANCE				
	Daughter calving difficulty (% 3 & 4)	5.9%	46% (Average)	
★★★★★	Daughter milk (kg)	4.7kg	49% (Average)	★★★★★
★★★★★	Daughter calving interval (days)	-0.7d	45% (Average)	★★★★★

Genotype included in evaluation

- Liam's first calves exhibit great potential
- Liam was selected for his maternal pedigree and phenotype
- A high milk pedigree; Ronick Hawk from a milky Vermont dam (+5kgs)
- Liam himself is an average sized, nicely muscled, correct, docile bull



Daughter, Shannon Primrose



Sire, Ronick Hawk

BROADMEADOWS CANNON
RONICK HAWK
 RONICK ESTHER
 HALTCLIFFE VERMOUNT
CROSS FLAMANDE
 TAQUINE

LM4217 MOONDHARRIG KNELL

Date of Birth: 18/09/2015

MYOSTATIN STATUS (MH): +/- (2F94L)

Herd Book Number:

LIMIRLM211038650530



Star Rating (within breed)	Economic Indexes	€uro value per progeny	Index reliability	Star Rating (across all beef breeds)
★★★★★	REPLACEMENT	€167	56% (Average)	★★★★★
★★★☆☆	TERMINAL	€118	69% (High)	★★★★★

Source ICBF July 19

Star Rating (within breed)	Key profit traits	Index value	Trait reliability	Star Rating (across all beef breeds)
EXPECTED PROGENY PERFORMANCE				
	Calving difficulty (% 3 & 4)	4.6%	98% (V. High)	Calving Records: 1724
★★★★★	Gestation Length (days)	2.8d	99% (V. High)	★★★★★
★☆☆☆☆	Docity (1-5 scale)	-0.14 _{scale}	94% (V. High)	★☆☆☆☆
★★★☆☆	Carcass weight (kg)	20.9kg	65% (High)	★★★★★
★★★☆☆	Carcass conformation (1-15 scale)	2.07 _{scale}	56% (Average)	★★★★★
EXPECTED DAUGHTER BREEDING PERFORMANCE				
	Daughter calving difficulty (% 3 & 4)	5.4%	46% (Average)	
★★★★★	Daughter milk (kg)	7.6kg	48% (Average)	★★★★★
★★★★★	Daughter calving interval (days)	-0.4d	43% (Average)	★★★★★

Genotype included in evaluation



Son, Hawthorne Noble



Son, K Kane, Sligo

- Easy calving, suitable for pedigree and commercial maidens
- Replacement index (€167), top 1% across all breeds
- Three generations of proven maternal sires in his pedigree
- Well balanced all-round bull

ON-DIT
 BAVARDAGE
 RIDELLE
 NIMBUS-MN
 MOONDHARRIG FLORA
 MOONDHARRIG LOTTO

LM5488 MIRO (PP)

Date of Birth: 25/07/2016

MYOSTATIN STATUS (MH): +/+ (2F94L)

Herd Book Number:

LU99472201

SEMEN AVAILABLE NOV. '19



Star Rating (within breed)	Economic Indexes	Euro value per progeny	Index reliability	Star Rating (across all beef breeds)
★★★★★	REPLACEMENT	€138	31% (Low)	★★★★★
★☆☆☆☆	TERMINAL	€119	31% (Low)	★★★★★

Source ICBF July 19

Star Rating (within breed)	Key profit traits	Index value	Trait reliability	Star Rating (across all beef breeds)
EXPECTED PROGENY PERFORMANCE				
	Calving difficulty (% 3 & 4)	2.8%	32% (Low)	Calving Records: 0
★★★★★	Gestation Length (days)	3.4d	31% (Low)	★☆☆☆☆
★★★★★	Docility (1-5 scale)	0.02 _{scale}	31% (Low)	★★★★★
★☆☆☆☆	Carcass weight (kg)	18.2kg	31% (Low)	★★★★★
★☆☆☆☆	Carcass conformation (1-15 scale)	1.52 _{scale}	31% (Low)	★★★★★
EXPECTED DAUGHTER BREEDING PERFORMANCE				
	Daughter calving difficulty (% 3 & 4)	6.1%	31% (Low)	
★★★★★	Daughter milk (kg)	3.7kg	31% (Low)	★★★★★
★★★★★	Daughter calving interval (days)	-0.5d	30% (Low)	★★★★★

Genotype included in evaluation

- Exciting new homozygous polled Limousin sire
- Miro is an exceptional, long, correct, very well-muscled bull with super temperament
- His dam is an outstanding breeding cow
- His first crop of calves in France were easily born and exhibit Miro's growth, shape and class

TEST TEST SIRE

NEW

**HOMOZYGOUS
POLLED**



┌ CN LEONARD P
LEO MIRO PP
└ JETTY P
┌ MERLIN P
NIKITA P
└ NURIA P

ZAG CASTLEVIEW GAZELLE

Date of Birth: 24/12/2011

MYOSTATIN STATUS (MH): +/+ (2F94L)

Herd Book Number:

LIMIRLM191567140634



Star Rating (within breed)	Economic Indexes	€uro value per progeny	Index reliability	Star Rating (across all beef breeds)
★★★★★	REPLACEMENT	€140	93% (V.High)	★★★★★
★★★☆☆	TERMINAL	€122	97% (V.High)	★★★★☆

Source ICBF July 19

Star Rating (within breed)	Key profit traits	Index value	Trait reliability	Star Rating (across all beef breeds)
EXPECTED PROGENY PERFORMANCE				
	Calving difficulty (% 3 & 4)	4.2%	99% (V.High)	Calving Records: 53678
★★★☆☆	Gestation Length (days)	3.9d	99% (V.High)	★☆☆☆☆
★★★★★	Docility (1-5 scale)	-0.03 _{scale}	99% (V.High)	★★★☆☆
★★★☆☆	Carcass weight (kg)	19.8kg	99% (V.High)	★★★★☆
★★★☆☆	Carcass conformation (1-15 scale)	2.18 _{scale}	99% (V.High)	★★★★★
EXPECTED DAUGHTER BREEDING PERFORMANCE				
	Daughter calving difficulty (% 3 & 4)	8.1%	97% (V.High)	
★★☆☆☆	Daughter milk (kg)	-1.6kg	97% (V.High)	★☆☆☆☆
★★★★★	Daughter calving interval (days)	-6.6d	78% (High)	★★★★★

Genotype included in evaluation

- A legend! Proven superior replacement and terminal sire
- Calving ease, docility, conformation & fertility in one package
- No. 1 Limousin bull available for the fertility trait; calving interval
- Works best on tall plain heifers and cows

CALVING
EASE
EASY

WEANLING



REPLACEMENT



FINISHING



Daughter H McKee, Donegal



Son, T Kennedy, Sligo

┌ GLENROCK VENTURA
 AMPERTAINNE COMMANDER
 └ AMPERTAINNE ANNABELLA
 ┌ RONICK HAWK
 CASTLEVIEW CAMELIA
 └ F040 G7

ADX ARDLEA DAN

Herd Book Number: LIMIRLM221064580751
Date of Birth: 11/09/2008 MYOSTATIN STATUS (MH): +/- (2F94L)



LM2065 CASIMIR 65

Herd Book Number: LIMFRAM001932638129
Date of Birth: 26/09/2007 MYOSTATIN STATUS (MH): +/- (2F94L)



Star Rating (within breed)	Economic Indexes	Euro value per progeny	Index reliability	Star Rating (across breeds)
★★★★★	REPLACEMENT	€24	98% (V. High)	★★★★★
★★★★★	TERMINAL	€123	96% (V. High)	★★★★★

Star Rating (within breed)	Key profit traits	Index value	Trait reliability	Star Rating (across breeds)
EXPECTED PROGENY PERFORMANCE				
	Calving difficulty (% 3 & 4)	6.9%	99% (V. High)	Calving Records: 26044
★★★★★	Gestation Length (days)	4.2d	99% (V. High)	★★★★★
★★★★★	Docity (1-5 scale)	-0.05 scale	99% (V. High)	★★★★★
★★★★★	Carcass weight (kg)	21.5kg	99% (V. High)	★★★★★
★★★★★	Carcass conformation (1-15 scale)	2.17 scale	99% (V. High)	★★★★★
EXPECTED DAUGHTER BREEDING PERFORMANCE				
	Daughter calving difficulty (% 3 & 4)	4.2%	99% (V. High)	
★★★★★	Daughter milk (kg)	-8.8kg	99% (V. High)	★★★★★
★★★★★	Daughter calving interval (days)	-1.2d	97% (V. High)	★★★★★

Genotype included in evaluation



OMAR
VIVALDI
NAPHTALINE
NENUPHAR
BREMORE VERYNICE
0172 RUCIE B

Daughter

Star Rating (within breed)	Economic Indexes	Euro value per progeny	Index reliability	Star Rating (across breeds)
★★★★★	REPLACEMENT	€102	71% (High)	★★★★★
★★★★★	TERMINAL	€130	86% (V. High)	★★★★★

Star Rating (within breed)	Key profit traits	Index value	Trait reliability	Star Rating (across breeds)
EXPECTED PROGENY PERFORMANCE				
	Calving difficulty (% 3 & 4)	6.8%	93% (V. High)	Calving Records: 435
★★★★★	Gestation Length (days)	3.3d	95% (V. High)	★★★★★
★★★★★	Docity (1-5 scale)	-0.12 scale	91% (V. High)	★★★★★
★★★★★	Carcass weight (kg)	30.4kg	93% (V. High)	★★★★★
★★★★★	Carcass conformation (1-15 scale)	2.27 scale	91% (V. High)	★★★★★
EXPECTED DAUGHTER BREEDING PERFORMANCE				
	Daughter calving difficulty (% 3 & 4)	3.9%	58% (Average)	
★★★★★	Daughter milk (kg)	-3.8kg	71% (High)	★★★★★
★★★★★	Daughter calving interval (days)	0.2d	54% (Average)	★★★★★

Genotype included in evaluation



CASSIS
NEUF
JUNGLE
OIGNON
SUCRETTE
LEONE

Son, TJ McCool, Donegal

- Ardlea Dan has stood the test of time as a terminal sire
- A farmer favourite for his balance of calving, weight and shape
- Good weight gain and carcass conformation
- Proven superior terminal sire
- Top 2% across all breeds on Carcass Conformation, Top 4% on Carcass Weight
- Average calving, suitable for second calvers

LM2388 DIMOIWII

Herd Book Number: LIMFRAM0049411548
Date of Birth: 02/09/2008 MYOSTATIN STATUS (MH): +/+ (2F94L)



Daughter



LM4360 AHERLA K 7 (Pp)

Herd Book Number: LIMIRLM141851180620
Date of Birth: 26/12/2015 MYOSTATIN STATUS (MH): +/+ (2F94L)



Star Rating (within breed)	Economic Indexes	Euro value per progeny	Index reliability	Star Rating (across breeds)
★★★★★	REPLACEMENT	€97	60% (High)	★★★★★
★☆☆☆☆	TERMINAL	€99	73% (High)	★★★★★

Star Rating (within breed)	Key profit traits	Index value	Trait reliability	Star Rating (across breeds)
EXPECTED PROGENY PERFORMANCE				
	Calving difficulty (% 3 & 4)	5.7%	98% (V. High)	Calving Records: 2156
★★★★★	Gestation Length (days)	3.4d	99% (V. High)	★★☆☆☆
★☆☆☆☆	Docility (1-5 scale)	-0.14 scale	88% (V. High)	★☆☆☆☆
★★☆☆☆	Carcass weight (kg)	21kg	71% (High)	★★★★★
★☆☆☆☆	Carcass conformation (1-15 scale)	1.59 scale	66% (High)	★★★★★

EXPECTED DAUGHTER BREEDING PERFORMANCE				
	Daughter calving difficulty (% 3 & 4)	3.8%	47% (Average)	
★★★★★	Daughter milk (kg)	4.7kg	55% (Average)	★★★★★
★☆☆☆☆	Daughter calving interval (days)	4.9d	47% (Average)	★☆☆☆☆

Genotype included in evaluation



ON-DIT
INDECIS
FRANCHON
TINUSA
HIGHLANDER
PINUSA

Son, Ml Lynch. Donegal

Star Rating (within breed)	Economic Indexes	Euro value per progeny	Index reliability	Star Rating (across breeds)
★★★★★	REPLACEMENT	€100	43% (Average)	★★★★★
★★☆☆☆	TERMINAL	€115	52% (Average)	★★★★★

Star Rating (within breed)	Key profit traits	Index value	Trait reliability	Star Rating (across breeds)
EXPECTED PROGENY PERFORMANCE				
	Calving difficulty (% 3 & 4)	4.6%	89% (V. High)	Calving Records: 292
★★★★★	Gestation Length (days)	0.9d	96% (V. High)	★★★★★
★★★★★	Docility (1-5 scale)	-0.01 scale	46% (Average)	★★★★★
★★☆☆☆	Carcass weight (kg)	21.2kg	41% (Average)	★★★★★
★☆☆☆☆	Carcass conformation (1-15 scale)	1.73 scale	38% (Low)	★★★★★

EXPECTED DAUGHTER BREEDING PERFORMANCE				
	Daughter calving difficulty (% 3 & 4)	4.9%	37% (Low)	
★★★★★	Daughter milk (kg)	0kg	40% (Average)	★★☆☆☆
★★☆☆☆	Daughter calving interval (days)	1.3d	36% (Low)	★☆☆☆☆

Genotype included in evaluation



GREENSONS HOWLETT
TOWTHORPE BLACK DODGE
GREENSONS TISKIE
AHERLA HETTI
GRAHAMS APACHE
AHERLA ERNY

Daughter, MONGORRY VIEW PANDORA

- Proven French sire
- High degree of farmer satisfaction with progeny in Ireland
- Suitable for second calvers
- A milk improver, +5kgs

- Easy calving, suitable for pedigree and commercial heifers
- Heterozygous polled, half of the progeny will be polled
- Shortest gestation Limousin bull available

LM2117 TOMSCHOICE IMPERIAL

Herd Book Number: LIMGBRM00CJL13-0281
Date of Birth: 18/11/2013 MYOSTATIN STATUS (MH): +/- (2F94L)



LM2206 ELITE ICE CREAM ET

Herd Book Number: LIMIRLM221062760982
Date of Birth: 20/12/2013 MYOSTATIN STATUS (MH): Q204X/+ (1F94L)



Star Rating (within breed)	Economic Indexes	Euro value per progeny	Index reliability	Star Rating (across breeds)
★★★★★	REPLACEMENT	€137	67% (High)	★★★★★
★★★★★	TERMINAL	€130	94% (V. High)	★★★★★

Star Rating (within breed)	Key profit traits	Index value	Trait reliability	Star Rating (across breeds)
EXPECTED PROGENY PERFORMANCE				
	Calving difficulty (% 3 & 4)	8.1%	99% (V. High)	Calving Records: 4623
★★★★★	Gestation Length (days)	1.5d	99% (V. High)	★★★★★
★☆☆☆☆	Docility (1-5 scale)	-0.12 scale	99% (V. High)	★☆☆☆☆
★★★★★	Carcass weight (kg)	26kg	98% (V. High)	★★★★★
★★★★★	Carcass conformation (1-15 scale)	2.45 scale	98% (V. High)	★★★★★
EXPECTED DAUGHTER BREEDING PERFORMANCE				
	Daughter calving difficulty (% 3 & 4)	4.5%	56% (Average)	
★★★★★	Daughter milk (kg)	3.8kg	56% (Average)	★★★★★
★★★☆☆	Daughter calving interval (days)	1.2d	45% (Average)	★★★☆☆

Genotype included in evaluation



Daughter, P Keating Wexford

— WILODGE TONKA
KAPRICO ERAVELLE
— KAPRICO RAVELLE

— HOMEBYRES DRUMMIE
TOMSCHOICE GAUCHE
— TOMSCHOICE VOGUE

Star Rating (within breed)	Economic Indexes	Euro value per progeny	Index reliability	Star Rating (across breeds)
★☆☆☆☆	REPLACEMENT	€30	63% (High)	★☆☆☆☆
★★★★★	TERMINAL	€144	88% (V. High)	★★★★★

Star Rating (within breed)	Key profit traits	Index value	Trait reliability	Star Rating (across breeds)
EXPECTED PROGENY PERFORMANCE				
	Calving difficulty (% 3 & 4)	8.4%	98% (V. High)	Calving Records: 1751
★☆☆☆☆	Gestation Length (days)	6.3d	98% (V. High)	★☆☆☆☆
★★★★★	Docility (1-5 scale)	-0.04 scale	97% (V. High)	★★★★★
★★★★★	Carcass weight (kg)	33.4kg	95% (V. High)	★★★★★
★★★★★	Carcass conformation (1-15 scale)	2.55 scale	94% (V. High)	★★★★★
EXPECTED DAUGHTER BREEDING PERFORMANCE				
	Daughter calving difficulty (% 3 & 4)	5.1%	48% (Average)	
★☆☆☆☆	Daughter milk (kg)	-4.6kg	47% (Average)	★☆☆☆☆
★☆☆☆☆	Daughter calving interval (days)	4.6d	44% (Average)	★☆☆☆☆

Genotype included in evaluation



Daughter, Anne Gallery, Clare

— GLENROCK VENTURA
AMPERTAINE ELGIN
— AMPERTAINE CARLA

— EMERSON
ARDLEA GEORGE
— ARDLEA DELTA

- Proven superior maternal and terminal sire
- Top 1% across all breeds for Carcass Conformation and Feed Intake
- First daughters have calved down and are milky
- Short gestation sire

- Proven sire of commercial show champions
- 5 star across breed for Carcass Weight, Conformation, Fat and Feed intake
- Use to produce superior weanlings and finished cattle efficiently

CH4321 LAPON

Date of Birth: 20/12/2015
MYOSTATIN STATUS (MH): +/+

Herd Book Number:
CHAFRAM005706129452



Star Rating (within breed)	Economic Indexes	€uro value per progeny	Index reliability	Star Rating (across all beef breeds)
★★★★★	REPLACEMENT	€95	40% (Average)	★★★★★
★★★★★	TERMINAL	€153	48% (Average)	★★★★★

Source ICBF July'19

Star Rating (within breed)	Key profit traits	Index value	Trait reliability	Star Rating (across all beef breeds)
EXPECTED PROGENY PERFORMANCE				
	Calving difficulty (% 3 & 4)	5.5%	77% (High)	Calving Records: 103
★★★★★	Gestation Length (days)	2.1d	69% (High)	★★★★★
★☆☆☆☆	Docility (1-5 scale)	-0.04 _{scale}	44% (Average)	★☆☆☆☆
★★★★★	Carcass weight (kg)	41kg	41% (Average)	★★★★★
★★★★★	Carcass conformation (1-15 scale)	1.86 _{scale}	42% (Average)	★★★★★
EXPECTED DAUGHTER BREEDING PERFORMANCE				
	Daughter calving difficulty (% 3 & 4)	5.2%	33% (Low)	
★★★★★	Daughter milk (kg)	2.2kg	37% (Low)	★★★★★
★★★★★	Daughter calving interval (days)	-1d	33% (Low)	★★★★★

Genotype included in evaluation

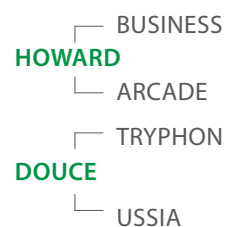


Sire



Son, A Bailey, Laos

- Easy calving Charolais
- Lapon's first crop of calves were easily born and exhibit good growth and shape
- Lapon is a graduate of a French performance test centre where he was one of the top performers



CH4251 GOLDSTAR LUDWIG

Date of Birth: 17/10/2015

MYOSTATIN STATUS (MH): +/-

Herd Book Number:
CHAIRLM331457440370

CHAROLAIS



Star Rating (within breed)	Economic Indexes	Euro value per progeny	Index reliability	Star Rating (across all beef breeds)
★★★★★	REPLACEMENT	€84	56% (Average)	★★★★★☆☆
★★★★★	TERMINAL	€145	65% (High)	★★★★★☆☆

Source ICBF July 19



Star Rating (within breed)	Key profit traits	Index value	Trait reliability	Star Rating (across all beef breeds)
EXPECTED PROGENY PERFORMANCE				
	Calving difficulty (% 3 & 4)	7.5%	94% (V. High)	Calving Records: 634
★★★★★	Gestation Length (days)	1.7d	96% (V. High)	★★★★★☆☆
★★★★★	Docity (1-5 scale)	0.17 _{scale}	87% (V. High)	★★★★★☆☆
★★★★★	Carcass weight (kg)	40.7kg	60% (High)	★★★★★☆☆
★★★★★	Carcass conformation (1-15 scale)	2.1 _{scale}	52% (Average)	★★★★★☆☆
EXPECTED DAUGHTER BREEDING PERFORMANCE				
	Daughter calving difficulty (% 3 & 4)	5.5%	47% (Average)	
★★★★★☆☆	Daughter milk (kg)	-3.6kg	49% (Average)	★★★★★☆☆
★★★★★☆☆	Daughter calving interval (days)	-2.5d	46% (Average)	★★★★★☆☆



Daughter, John Meehan, Co. Clare



Son, TJ McCool, Donegal

- Ludwig is a superior terminal sire
- Top 1% across all breeds for Carcass Weight; top 4% for Carcass Conformation
- Use to produce superior weanlings and finished cattle
- Short gestation sire



FWO FLEETWOOD

Date of Birth: 27/09/2010

MYOSTATIN STATUS (MH): Q204X/+

Herd Book Number:

CHAFRAM000111319279



Star Rating (within breed)	Economic Indexes	€uro value per progeny	Index reliability	Star Rating (across all beef breeds)
★★★★★	REPLACEMENT	€55	91% (V.High)	★★★★★
★★★★★	TERMINAL	€137	95% (V.High)	★★★★★

Source ICBF July 19



Star Rating (within breed)	Key profit traits	Index value	Trait reliability	Star Rating (across all beef breeds)
EXPECTED PROGENY PERFORMANCE				
	Calving difficulty (% 3 & 4)	6.6%	99% (V.High)	Calving Records: 8574
★★★★★	Gestation Length (days)	2.8d	99% (V.High)	★★★★★
★★★★★	Docity (1-5 scale)	0.13 _{scale}	99% (V.High)	★★★★★
★★★★★	Carcass weight (kg)	32.5kg	99% (V.High)	★★★★★
★★★★★	Carcass conformation (1-15 scale)	2.31 _{scale}	99% (V.High)	★★★★★
EXPECTED DAUGHTER BREEDING PERFORMANCE				
	Daughter calving difficulty (% 3 & 4)	4%	90% (V.High)	
★★★★★	Daughter milk (kg)	-5.3kg	95% (V.High)	★★★★★
★★★★★	Daughter calving interval (days)	-1.2d	79% (High)	★★★★★



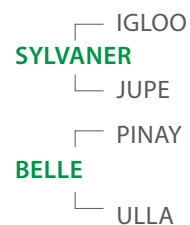
Daughter, 1st place Carrick Winter Fair 2018, J Brady, Co. Roscommon



Son, P. Finnegan, Sligo

Genotype included in evaluation

- Proven superior terminal sire, top 1% across all breeds for Carcass Conformation, top 2% for Carcass Weight
- Fleetwood combines calving ease with weight & shape
- Suitable for second calvers



CH5482 DEMON (PP)

Date of Birth: 08/08/2017

MYOSTATIN STATUS (MH): +/+

Herd Book Number:

CZ12088064



Star Rating (within breed)	Economic Indexes	Euro value per progeny	Index reliability	Star Rating (across all beef breeds)
★★★★★	REPLACEMENT	€69	32% (Low)	★★★★★
★☆☆☆☆	TERMINAL	€91	33% (Low)	★★★★★

Source ICBF, July 19

Star Rating (within breed)	Key profit traits	Index value	Trait reliability	Star Rating (across all beef breeds)
EXPECTED PROGENY PERFORMANCE				
	Calving difficulty (% 3 & 4)	5.8%	36% (Low)	Calving Records: 0
★★★★★	Gestation Length (days)	2.2d	31% (Low)	★★★★★
★★★★★	Docity (1-5 scale)	0.03 scale	30% (low)	★★★★★
★★★★★	Carcass weight (kg)	19kg	34% (Low)	★★★★★
★★★★★	Carcass conformation (1-15 scale)	1.48 scale	34% (Low)	★★★★★
EXPECTED DAUGHTER BREEDING PERFORMANCE				
	Daughter calving difficulty (% 3 & 4)	4.9%	30% (low)	
★★★★★	Daughter milk (kg)	-1.6kg	33% (Low)	★★★★★
★★★★★	Daughter calving interval (days)	-1.3d	30% (Low)	★★★★★

Genotype included in evaluation

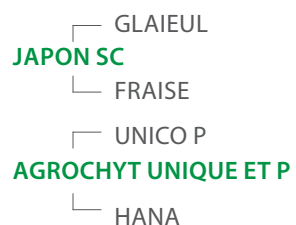
- New exciting homozygous polled Charolais sire
- Champion at the National show in his home country Czech republic in 2018, Junior Champion Simagena show in Paris 2019
- Demon is a long, correct bull. His pedigree boasts a strong sire stack of proven bulls



Sire, Japon



Mat G. Sire, Unico



CH4082 FIRODA JASON

Date of Birth: 12/12/2014
 MYOSTATIN STATUS (MH): +/+ (1F94L)

Herd Book Number:
CHAIRLM211179670649



Star Rating (within breed)	Economic Indexes	€uro value per progeny	Index reliability	Star Rating (across all beef breeds)
★★★★★	REPLACEMENT	€86	62% (High)	★★★★★
★★★☆☆	TERMINAL	€127	80% (V. High)	★★★★★

Source ICBF July'19



Star Rating (within breed)	Key profit traits	Index value	Trait reliability	Star Rating (across all beef breeds)
-------------------------------	-------------------	----------------	----------------------	---

EXPECTED PROGENY PERFORMANCE

	Calving difficulty (% 3 & 4)	9.3%	97% (V. High)	Calving Records: 1105
★★★☆☆	Gestation Length (days)	3.1d	98% (V. High)	★★★★★
★★★★★	Docity (1-5 scale)	0.14 scale	96% (V. High)	★★★★★
★★★★★	Carcass weight (kg)	38.2kg	82% (V. High)	★★★★★
★★★★★	Carcass conformation (1-15 scale)	2.22 scale	77% (High)	★★★★★

EXPECTED DAUGHTER BREEDING PERFORMANCE

	Daughter calving difficulty (% 3 & 4)	4.9%	48% (Average)	
★★★★★	Daughter milk (kg)	-2.7kg	49% (Average)	★★★★★
★★★★★	Daughter calving interval (days)	-3.8d	50% (Average)	★★★★★

Genotype included in evaluation

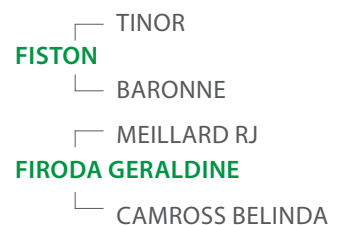


Daughter, Tom Neylon, Clare



Daughter, P Keating, Wexford

- Jason is transmitting excellent size, length and weight gain
- Use on well-muscled cows to improve skeletal development and performance
- Top 1% across all breeds for Carcass Weight; top 2% for Carcass Conformation



CH4252 CAVELANDS LEVI

Date of Birth: 12/03/2015
MYOSTATIN STATUS (MH): Q204X/+

Herd Book Number:
CHAIRLM271848690796



Star Rating (within breed)	Economic Indexes	Euro value per progeny	Index reliability	Star Rating (across all beef breeds)
★★★★★	REPLACEMENT	€58	57% (Average)	★★★★★
★★★★★	TERMINAL	€144	66% (High)	★★★★★

Source ICBF July 19



CALVING
EASE
MATURE
ONLY



WEANLING



FINISHING

Star Rating (within breed)	Key profit traits	Index value	Trait reliability	Star Rating (across all beef breeds)
EXPECTED PROGENY PERFORMANCE				
	Calving difficulty (% 3 & 4)	10.1%	96% (V. High)	Calving Records: 839
★★★★★	Gestation Length (days)	2.2d	97% (V. High)	★★★★★
★★★★★	Docity (1-5 scale)	0.05 scale	91% (V. High)	★★★★★
★★★★★	Carcass weight (kg)	39kg	60% (High)	★★★★★
★★★★★	Carcass conformation (1-15 scale)	2.09 scale	52% (Average)	★★★★★
EXPECTED DAUGHTER BREEDING PERFORMANCE				
	Daughter calving difficulty (% 3 & 4)	3.7%	48% (Average)	
★★★★★	Daughter milk (kg)	-3.9kg	49% (Average)	★★★★★
★★★★★	Daughter calving interval (days)	-0.5d	48% (Average)	★★★★★

Genotype included in evaluation

- Superior terminal sire
- Top 1% across all breeds for Carcass Weight; top 4% for Carcass Conformation
- Use on mature cows only
- Exceptional weanling producer



Daughter, John Meehan, Clare



Daughter, Raymond Lyons, Longford

MEILLARD RJ
PIRATE
 BANQUISE
 DOONALLY NEW
CAVELANDS HOLLY 2
 CAVELANDS VIVIENNE

CH4320 LISERON

Date of Birth: 03/09/2015
MYOSTATIN STATUS (MH): +/+

Herd Book Number:
CHAFRAM008907595411



Star Rating (within breed)	Economic Indexes	€uro value per progeny	Index reliability	Star Rating (across all beef breeds)
★★★★★	REPLACEMENT	€105	46% (Average)	★★★★★
★★★★★	TERMINAL	€133	57% (Average)	★★★★★

Source ICBF July 19

Star Rating (within breed)	Key profit traits	Index value	Trait reliability	Star Rating (across all beef breeds)
EXPECTED PROGENY PERFORMANCE				
	Calving difficulty (% 3 & 4)	7%	91% (V. High)	Calving Records: 379
★★★★★	Gestation Length (days)	2.4d	93% (V. High)	★★★★★
★★★★★	Docity (1-5 scale)	0.09 scale	67% (High)	★★★★★
★★★★★	Carcass weight (kg)	37.3kg	48% (Average)	★★★★★
★★★★★	Carcass conformation (1-15 scale)	1.81 scale	47% (Average)	★★★★★
EXPECTED DAUGHTER BREEDING PERFORMANCE				
	Daughter calving difficulty (% 3 & 4)	3.7%	38% (Low)	
★★★★★	Daughter milk (kg)	2.9kg	42% (Average)	★★★★★
★★★★★	Daughter calving interval (days)	-1.9d	35% (Low)	★★★★★

Genotype included in evaluation

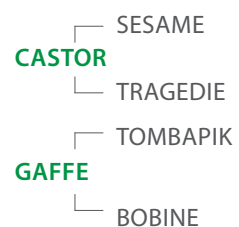
- Liseron's first crop of calves exhibit good performance
- His pedigree is a sire stack of proven superior maternal sires; Castor, Tombapik and Populair
- Average calving



Son, Tom Neylon, Clare



Son, Bill Halligan, Wicklow



CH4637 CLENAGH MISCHIEF 2 ET

Herd Book Number: CHAIRLM131188150518
 Date of Birth: 03/10/2016 MYOSTATIN STATUS (MH): Q204X/Q204X



FSZ FISTON

Herd Book Number: CHAFRAM004241615681
 Date of Birth: 20/09/2010 MYOSTATIN STATUS (MH): Q204X/+



Star Rating (within breed)	Economic Indexes	Euro value per progeny	Index reliability	Star Rating (across breeds)
★☆☆☆☆	REPLACEMENT	-€40	50% (Average)	★☆☆☆☆
★★★★★	TERMINAL	€161	52% (Average)	★★★★★

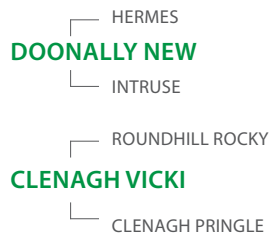
Star Rating (within breed)	Key profit traits	Index value	Trait reliability	Star Rating (across breeds)
EXPECTED PROGENY PERFORMANCE				
	Calving difficulty (% 3 & 4)	12.5%	54% (Average)	Calving Records: 5
★★★★★	Gestation Length (days)	2.3d	47% (Average)	★★★★★
★★★★★	Docility (1-5 scale)	0.16 scale	57% (Average)	★★★★★
★★★★★	Carcass weight (kg)	49.3kg	55% (Average)	★★★★★
★★★★★	Carcass conformation (1-15 scale)	2.43 scale	52% (Average)	★★★★★

EXPECTED DAUGHTER BREEDING PERFORMANCE				
	Daughter calving difficulty (% 3 & 4)	7.2%	48% (Average)	
★☆☆☆☆	Daughter milk (kg)	-7.4kg	49% (Average)	★☆☆☆☆
★☆☆☆☆	Daughter calving interval (days)	3.6d	47% (Average)	★☆☆☆☆

Genotype included in evaluation



Son, T. Boyd, Donegal



Star Rating (within breed)	Economic Indexes	Euro value per progeny	Index reliability	Star Rating (across breeds)
★★★★★	REPLACEMENT	€112	95% (V. High)	★★★★★
★★★★★	TERMINAL	€156	96% (V. High)	★★★★★

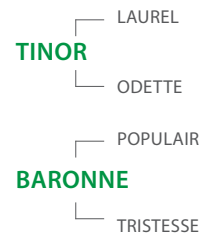
Star Rating (within breed)	Key profit traits	Index value	Trait reliability	Star Rating (across breeds)
EXPECTED PROGENY PERFORMANCE				
	Calving difficulty (% 3 & 4)	6.6%	99% (V. High)	Calving Records: 43402
★☆☆☆☆	Gestation Length (days)	3.6d	99% (V. High)	★☆☆☆☆
★★★★★	Docility (1-5 scale)	0.08 scale	99% (V. High)	★★★★★
★★★★★	Carcass weight (kg)	40.1kg	99% (V. High)	★★★★★
★★★★★	Carcass conformation (1-15 scale)	2.32 scale	99% (V. High)	★★★★★

EXPECTED DAUGHTER BREEDING PERFORMANCE				
	Daughter calving difficulty (% 3 & 4)	5.6%	97% (V. High)	
★★★★★	Daughter milk (kg)	-4.1kg	98% (V. High)	★☆☆☆☆
★★★★★	Daughter calving interval (days)	-4.6d	88% (V. High)	★★★★★

Genotype included in evaluation



Son, L. Garvey, Cavan



- Mischief is an exceptionally heavily muscled bull, top 1% across all breeds for Carcass Conformation
- A homozygous myostatin carrier; he carries two copies of the Q204X gene
- Use on mature cows only

- A legend!
- Top 5% of the Charolais breed for Terminal and Replacement Index, top 2% for Carcass Conformation, top 5% for daughter fertility
- Avoid on heavily muscled females

BB4498 DELURE DE LA BEOLE

Date of Birth: 29/08/2014
MYOSTATIN STATUS (MH): nt821/nt821

Herd Book Number:
BBLBELM000457865144



Star Rating (within breed)	Economic Indexes	€uro value per progeny	Index reliability	Star Rating (across all beef breeds)
★★★★★	REPLACEMENT	€82	31% (Low)	★★★★★
★☆☆☆☆	TERMINAL	€102	34% (Low)	★★★★★

Source ICBF July 19

Star Rating (within breed)	Key profit traits	Index value	Trait reliability	Star Rating (across all beef breeds)
EXPECTED PROGENY PERFORMANCE				
	Calving difficulty (% 3 & 4)	8.2%	45% (Average)	Calving Records: 14
★★★★★	Gestation Length (days)	0.6d	49% (Average)	★★★★★
★★★☆☆	Docity (1-5 scale)	0.13 _{scale}	30% (Low)	★★★★★
★☆☆☆☆	Carcass weight (kg)	20kg	30% (Low)	★★★★★
★☆☆☆☆	Carcass conformation (1-15 scale)	2.09 _{scale}	30% (Low)	★★★★★
EXPECTED DAUGHTER BREEDING PERFORMANCE				
	Daughter calving difficulty (% 3 & 4)	8.5%	31% (Low)	
★★★★★	Daughter milk (kg)	7.1kg	30% (Low)	★★★★★
★★★★★	Daughter calving interval (days)	3d	31% (Low)	★☆☆☆☆

Genotype included in evaluation



Delure son, E. Keane, Galway

- Great satisfaction with first crop of calves in Ireland
- Proven Belgian bull
- Delure has an excellent index in Belgium for Calving Ease, Weight and Shape
- Use to produce superior weanlings

- LIBERAL D'OCHAMPS
- BALANCIER DE LA BEOLE**
- ABSINTHE DE LA BEOLE
- JUVENTUS DE L'ECLUSE
- BRECHE DE LA BEOLE**
- VERO DE LA BEOLE

BB5223 NOX DE L'ORGELOT

Date of Birth: 27/04/2017
MYOSTATIN STATUS (MH): nt821/nt821

Herd Book Number:
BBLBELM000359338727



Star Rating (within breed)	Economic Indexes	€uro value per progeny	Index reliability	Star Rating (across all beef breeds)
★★★★★	REPLACEMENT	€80	42% (Average)	★★★★★☆☆
★☆☆☆☆	TERMINAL	€112	42% (Average)	★★★★★☆☆

Source ICBF July 19

Star Rating (within breed)	Key profit traits	Index value	Trait reliability	Star Rating (across all beef breeds)
EXPECTED PROGENY PERFORMANCE				
	Calving difficulty (% 3 & 4)	9.6%	43% (Average)	Calving Records: 0
★★★★★☆☆	Gestation Length (days)	1.3d	43% (Average)	★★★★★☆☆
★★★★★☆☆	Docility (1-5 scale)	0.18 scale	43% (Average)	★★★★★☆☆
★★★★★☆☆	Carcass weight (kg)	24.1kg	43% (Average)	★★★★★☆☆
★★★★★☆☆	Carcass conformation (1-15 scale)	2.47 scale	43% (Average)	★★★★★☆☆
EXPECTED DAUGHTER BREEDING PERFORMANCE				
	Daughter calving difficulty (% 3 & 4)	9.8%	42% (Average)	
★★★★★☆☆	Daughter milk (kg)	5.2kg	43% (Average)	★★★★★☆☆
★★★★★☆☆	Daughter calving interval (days)	2.1d	40% (Average)	★★★★★☆☆

Genotype included in evaluation

- Exciting new sire, an exceptional Adajio son
- In the Belgian classification he scored 92 on muscle, 88 on legs and feet and 91 overall
- He exhibits all the length, shape and power of his sire
- A must for quality seeking weanling producers

NEW

TEST SIRE



Sire, Adajio

- └ EMPIRE D'OCHAIN
- └ **ADAJIO DE BRAY**
- └ HUMAINE ET DE BRAY
- └ BENHUR DU CHAMP BOUVAL
- └ **STUPIDE DE L'ORGELOT**
- └ PASTILLE DE L'ORGELOT

BB4324 BOROSIDE JAGERBOMB ET

Date of Birth: 24/09/2015
 MYOSTATIN STATUS (MH): nt821/nt821

Herd Book Number:
BBLIRLM371479941376



Star Rating (within breed)	Economic Indexes	€uro value per progeny	Index reliability	Star Rating (across all beef breeds)
★★★★★	REPLACEMENT	€90	44% (Average)	★★★★★
★★★★★	TERMINAL	€176	53% (Average)	★★★★★

Source ICBF July 19

Star Rating (within breed)	Key profit traits	Index value	Trait reliability	Star Rating (across all beef breeds)
EXPECTED PROGENY PERFORMANCE				
	Calving difficulty (% 3 & 4)	10.4%	87% (V. High)	Calving Records: 232
★★★★★	Gestation Length (days)	0d	96% (V. High)	★★★★★
★★★★★	Docity (1-5 scale)	0.17 _{scale}	50% (Average)	★★★★★
★★★★★	Carcass weight (kg)	42.4kg	43% (Average)	★★★★★
★★★★★	Carcass conformation (1-15 scale)	2.84 _{scale}	41% (Average)	★★★★★
EXPECTED DAUGHTER BREEDING PERFORMANCE				
	Daughter calving difficulty (% 3 & 4)	11.3%	37% (Low)	
★★★★★	Daughter milk (kg)	3.1kg	36% (Low)	★★★★★
★★★★★	Daughter calving interval (days)	5.6d	35% (Low)	★★★★★

Genotype included in evaluation

- Jagerbomb's first of calves excel both in muscle development and growth
- His dam is a proven breeder having produced numerous champions including Jagerbomb's full brother; BB Male Champion Tullamore 2017
- Use to produce superior weanlings



Son, MI Fogarty, Wexford



Full brother, Male Champion Tinahely 2018

- └ ACCORD DE WIHOGNE
- └ MANNEQUIN DE SBERCHAMPS
- └ HARPE DE SBERCHAMPS
- └ JACKPOT 9831 ET TER REYBROECK
- BOROSIDE GLENDA ET**
- └ ROSEMOUNT DAISY

RWS ROSEMOUNT CASH ET

Herd Book Number: **BBLIRLM371366290240**
 Date of Birth: 08/09/2008 **MYOSTATIN STATUS (MH):** nt821/nt821



FSN FOLON DE CRAS AVERNAS

Herd Book Number: **BBLBELM000826472628**
 Date of Birth: 03/10/2010 **MYOSTATIN STATUS (MH):** nt821/nt821



Star Rating (within breed)	Economic Indexes	Euro value per progeny	Index reliability	Star Rating (across breeds)
★★★★★	REPLACEMENT	€46	91% (V. High)	★★★★★
★☆☆☆☆	TERMINAL	€120	93% (V. High)	★★★★★

Star Rating (within breed)	Key profit traits	Index value	Trait reliability	Star Rating (across breeds)
EXPECTED PROGENY PERFORMANCE				
	Calving difficulty (% 3 & 4)	11.2%	99% (V. High)	Calving Records: 3584
★★★★★	Gestation Length (days)	0.3d	99% (V. High)	★★★★★
★★★★★	Docity (1-5 scale)	0.22 scale	99% (V. High)	★★★★★
★☆☆☆☆	Carcass weight (kg)	26kg	99% (V. High)	★★★★★
★★★★★	Carcass conformation (1-15 scale)	2.86 scale	99% (V. High)	★★★★★

EXPECTED DAUGHTER BREEDING PERFORMANCE				
	Daughter calving difficulty (% 3 & 4)	11.5%	88% (V. High)	
★★★★★	Daughter milk (kg)	3.4kg	94% (V. High)	★★★★★
★★★★★	Daughter calving interval (days)	4.8d	80% (V. High)	★☆☆☆☆

Genotype included in evaluation



Son, S. Kinsella Offaly

TORRERO DU GRAND COURTY
JOKER DU PONT D'HERBAIS
 HARMONIEUSE DU PONT D'HERBAIS
 TINTIN DE MY
ROSEMOUNT TESS
 ROSEMOUNT PETRA

Star Rating (within breed)	Economic Indexes	Euro value per progeny	Index reliability	Star Rating (across breeds)
★★★★★	REPLACEMENT	€108	63% (High)	★★★★★
★★★★★	TERMINAL	€145	85% (V. High)	★★★★★

Star Rating (within breed)	Key profit traits	Index value	Trait reliability	Star Rating (across breeds)
EXPECTED PROGENY PERFORMANCE				
	Calving difficulty (% 3 & 4)	9.6%	93% (V. High)	Calving Records: 529
★☆☆☆☆	Gestation Length (days)	2d	96% (V. High)	★★★★★
★★★★★	Docity (1-5 scale)	0.24 scale	93% (V. High)	★★★★★
★★★☆☆	Carcass weight (kg)	31.4kg	92% (V. High)	★★★★★
★★★★★	Carcass conformation (1-15 scale)	2.85 scale	90% (V. High)	★★★★★

EXPECTED DAUGHTER BREEDING PERFORMANCE				
	Daughter calving difficulty (% 3 & 4)	9.1%	43% (Average)	
★★★★★	Daughter milk (kg)	4.8kg	52% (Average)	★★★★★
★★★★★	Daughter calving interval (days)	5d	42% (Average)	★☆☆☆☆

Genotype included in evaluation



PJ McGrath, Wicklow

MONT BLANC DE CENT-FONTAINE
PANACHE DE CENTFONTAINE
 MONDAINE ET DE CENTFONTAINE
 TROPIQUE DE CRAS AVERNAS
CASQUETTE DE CRAS AVERNAS
 ARCHIE ET DE CRAS AVERNAS

- Proven terminal sire suitable for weanling production & finishing
- Works best on 3/4 LM, BA & PT cows
- Top 1% of the BB breed for functionality

- High level of farmer satisfaction with Folon progeny
- Consistent producer of superior weanlings
- Proven terminal sire; top 1% across all breeds for Carcass Conformation, top 3% for Carcass Weight

SI4250 LIS-NA-RI GUCCI

Date of Birth: 20/10/2015

MYOSTATIN STATUS (MH): +/-

Herd Book Number:

SIMIRLM311239540243



Star Rating (within breed)	Economic Indexes	€uro value per progeny	Index reliability	Star Rating (across all beef breeds)
★★★★★	REPLACEMENT	€162	53% (Average)	★★★★★
★★★☆☆	TERMINAL	€76	61% (High)	★★★☆☆

Source ICBF July 19

Star Rating (within breed)	Key profit traits	Index value	Trait reliability	Star Rating (across all beef breeds)
EXPECTED PROGENY PERFORMANCE				
	Calving difficulty (% 3 & 4)	3.9%	86% (v. High)	Calving Records: 207
★★★★★	Gestation Length (days)	1.9d	90% (v. High)	★★★★★
★★★★★	Docility (1-5 scale)	0.1 scale	78% (High)	★★★★★
★★★☆☆	Carcass weight (kg)	15.6kg	58% (Average)	★★★☆☆
★★★★★	Carcass conformation (1-15 scale)	1.69 scale	50% (Average)	★★★★★
EXPECTED DAUGHTER BREEDING PERFORMANCE				
	Daughter calving difficulty (% 3 & 4)	5.9%	47% (Average)	
★★★★★	Daughter milk (kg)	9.1kg	49% (Average)	★★★★★
★★★★★	Daughter calving interval (days)	-2.9d	45% (Average)	★★★★★

Genotype included in evaluation

- Top 1% across all breeds on Replacement Index
- Suitable for use on second calvers
- Progeny are very correct, docile and well muscled
- +9kgs Milk



Daughter born at 283 days gestation



Son, V. Silke, Galway

DERRYCALLAGHAN HAMIL-
TON
 └─ GLEBEFARM TYSON
 └─ GLEBEFARM NATASHA
 └─ SEEPA TEE JAY
 DUFF CAPRI
 └─ DUFF WILLOW

SI4350 RUBYJEN HERE'S JOHNNY

Herd Book Number: **SIMIRLM241 180580801**
 Date of Birth: 20/04/2016 **MYOSTATIN STATUS (MH): +/-**



SI4595 BEARNA-DHEARG HONDA 50

Herd Book Number: **SIMIRLM341 135140523**
 Date of Birth: 15/12/2016 **MYOSTATIN STATUS (MH): +/-**



Star Rating (within breed)	Economic Indexes	Euro value per progeny	Index reliability	Star Rating (across breeds)
★★★★★	REPLACEMENT	€149	48% (Average)	★★★★★
★★★★★	TERMINAL	€84	52% (Average)	★★★★★

Star Rating (within breed)	Key profit traits	Index value	Trait reliability	Star Rating (across breeds)
EXPECTED PROGENY PERFORMANCE				
	Calving difficulty (% 3 & 4)	5.6%	63% (High)	Calving Records: 24
★★★★★	Gestation Length (days)	1.4d	72% (High)	★★★★★
★★★★★	Docity (1-5 scale)	0.11 scale	48% (Average)	★★★★★
★★★★★	Carcass weight (kg)	23.7kg	53% (Average)	★★★★★
★★★★★	Carcass conformation (1-15 scale)	1.49 scale	48% (Average)	★★★★★

EXPECTED DAUGHTER BREEDING PERFORMANCE				
	Daughter calving difficulty (% 3 & 4)	5.8%	45% (Average)	
★★★★★	Daughter milk (kg)	10.1kg	49% (Average)	★★★★★
★★★★★	Daughter calving interval (days)	-1d	42% (Average)	★★★★★

Genotype included in evaluation



Dam

GLEBEFARM TYSON
CELTIC BENNY ET
 CELTIC TINA
 MARBELHILL LIAM
TOWERHILL RUBY- JEN
 TOWERHILL JENNY

- First calves were easily born and look promising
- Top 2% across all breeds on Replacement Index
- Here's Johnny is a well-balanced, well-muscled, correct bull with super temperament

Star Rating (within breed)	Economic Indexes	Euro value per progeny	Index reliability	Star Rating (across breeds)
★★★★★	REPLACEMENT	€107	46% (Average)	★★★★★
★★★★★	TERMINAL	€90	47% (Average)	★★★★★

Star Rating (within breed)	Key profit traits	Index value	Trait reliability	Star Rating (across breeds)
EXPECTED PROGENY PERFORMANCE				
	Calving difficulty (% 3 & 4)	6.4%	49% (Average)	Calving Records: 0
★★★★★	Gestation Length (days)	1.2d	46% (Average)	★★★★★
★★★★★	Docity (1-5 scale)	0.03 scale	46% (Average)	★★★★★
★★★★★	Carcass weight (kg)	28.7kg	52% (Average)	★★★★★
★★★★★	Carcass conformation (1-15 scale)	1.5 scale	47% (Average)	★★★★★

EXPECTED DAUGHTER BREEDING PERFORMANCE				
	Daughter calving difficulty (% 3 & 4)	5.9%	44% (Average)	
★★★★★	Daughter milk (kg)	10.4kg	48% (Average)	★★★★★
★★★★★	Daughter calving interval (days)	1.6d	40% (Average)	★★★★★

Genotype included in evaluation



Full brother, Kawasaki, Junior M.
 Champion Tullamore 2019

ANATRIM VIVA (ET)
ANATRIM BODYBUILDER
 ANATRIM THERESA
 CURAHEEN TEXAS ET
BALLYDUFF BEST
 BALLYDUFF WENDY 2

- Honda 50 is a very classy, correct, well-muscled bull
- A son of the renowned Anatrium Bodybuilder
- Full brother was Junior Male Champion Simmental Tullamore 2019

SI2469 LISNACRANN FIFTY CENT

Herd Book Number: **SIMIRLM272111730322**
 Date of Birth: 25/10/2014 **MYOSTATIN STATUS (MH): +/-**



SI4347 LEEHERD HARRY 286

Herd Book Number: **SIMIRLM141883230286**
 Date of Birth: 21/03/2016 **MYOSTATIN STATUS (MH): +/-**



Star Rating (within breed)	Economic Indexes	Euro value per progeny	Index reliability	Star Rating (across breeds)
★★★★★	REPLACEMENT	€159	73% (High)	★★★★★
★★★★☆	TERMINAL	€75	95% (V. High)	★★★★☆

Star Rating (within breed)	Key profit traits	Index value	Trait reliability	Star Rating (across breeds)
EXPECTED PROGENY PERFORMANCE				
	Calving difficulty (% 3 & 4)	4.6%	99% (V. High)	Calving Records: 4869
★★★★★	Gestation Length (days)	0.8d	99% (V. High)	★★★★★
★★★★★	Docility (1-5 scale)	0.13 scale	99% (V. High)	★★★★★
★★★★☆	Carcass weight (kg)	18.3kg	97% (V. High)	★★★★☆
★★★★☆	Carcass conformation (1-15 scale)	1.26 scale	96% (V. High)	★★★★☆

EXPECTED DAUGHTER BREEDING PERFORMANCE				
	Daughter calving difficulty (% 3 & 4)	6.9%	61% (High)	
★★★★☆	Daughter milk (kg)	7.7kg	62% (High)	★★★★★
★★★★★	Daughter calving interval (days)	-1.8d	55% (Average)	★★★★★

Genotype included in evaluation



Daughter, H McKee, Donegal



Star Rating (within breed)	Economic Indexes	Euro value per progeny	Index reliability	Star Rating (across breeds)
★★★★☆	REPLACEMENT	€103	48% (Average)	★★★★★
★★★★☆	TERMINAL	€77	54% (Average)	★★★★☆

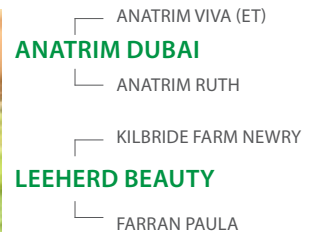
Star Rating (within breed)	Key profit traits	Index value	Trait reliability	Star Rating (across breeds)
EXPECTED PROGENY PERFORMANCE				
	Calving difficulty (% 3 & 4)	3.5%	77% (High)	Calving Records: 90
★★★★☆	Gestation Length (days)	2.3d	89% (V. High)	★★★★★
★★★★☆	Docility (1-5 scale)	0.06 scale	47% (Average)	★★★★★
★★★★☆	Carcass weight (kg)	22.3kg	50% (Average)	★★★★★
★★★★☆	Carcass conformation (1-15 scale)	1.26 scale	43% (Average)	★★★★★

EXPECTED DAUGHTER BREEDING PERFORMANCE				
	Daughter calving difficulty (% 3 & 4)	7%	42% (Average)	
★★★★☆	Daughter milk (kg)	8.5kg	45% (Average)	★★★★★
★★★★☆	Daughter calving interval (days)	1.4d	40% (Average)	★★★★★

Genotype included in evaluation



Full sister



- Top 1% across all breeds on Replacement Index
- Suitable for use (days) on second calvers
- The first daughters have calved down well, they are docile, milky and very fertile

- Son of Anatrим Dubai who has bred very consistently at Leeherd. Proven easy calving with excellent 200 & 400 day growth rates
- Dubai daughters are docile with excellent feet & udders, wide pelvis and have calved down unassisted at 2 years old
- Very fertile & milky maternal line, the dam & granddam have produced a combined 17 calves over a combined calving interval of 369 days

SI2152 CURAHEEN EARP

Herd Book Number: **SIMIRLM171059810478**
 Date of Birth: 28/12/2013 **MYOSTATIN STATUS (MH): +/-**



SI4083 CLONAGH FROSTY KING ET

Herd Book Number: **SIMIRLM221283391170**
 Date of Birth: 18/12/2014 **MYOSTATIN STATUS (MH): +/-**



Star Rating (within breed)	Economic Indexes	Euro value per progeny	Index reliability	Star Rating (across breeds)
★★★★★	REPLACEMENT	€170	80% (V. High)	★★★★★
★★★★★	TERMINAL	€106	96% (V. High)	★★★★★

Star Rating (within breed)	Key profit traits	Index value	Trait reliability	Star Rating (across breeds)
EXPECTED PROGENY PERFORMANCE				
	Calving difficulty (% 3 & 4)	5%	99% (V. High)	Calving Records: 5394
★★★★★	Gestation Length (days)	1.9d	99% (V. High)	★★★★★
★★★★★	Docility (1-5 scale)	0.11 scale	99% (V. High)	★★★★★
★★★★★	Carcass weight (kg)	27kg	99% (V. High)	★★★★★
★★★★★	Carcass conformation (1-15 scale)	1.74 scale	99% (V. High)	★★★★★
EXPECTED DAUGHTER BREEDING PERFORMANCE				
	Daughter calving difficulty (% 3 & 4)	6.3%	81% (V. High)	
★☆☆☆☆	Daughter milk (kg)	5kg	79% (High)	★★★★★
★★★★★	Daughter calving interval (days)	-3.7d	54% (Average)	★★★★★

Genotype included in evaluation



Daughter, H McKee, Donegal

- HILLCREST CHAMPION
- CURAHEEN VIO (ET)**
- RACEVIEW MERLE-BEAUTY
- KILBRIDE FARM MILLAR
- BLACKFORD SISKIN**
- BLACKFORD MAVIS

Star Rating (within breed)	Economic Indexes	Euro value per progeny	Index reliability	Star Rating (across breeds)
★★★★★	REPLACEMENT	€128	63% (High)	★★★★★
★★★★★	TERMINAL	€111	84% (V. High)	★★★★★

Star Rating (within breed)	Key profit traits	Index value	Trait reliability	Star Rating (across breeds)
EXPECTED PROGENY PERFORMANCE				
	Calving difficulty (% 3 & 4)	5%	97% (V. High)	Calving Records: 1255
★★★★★	Gestation Length (days)	2.3d	98% (V. High)	★★★★★
★★★★★	Docility (1-5 scale)	0.06 scale	97% (V. High)	★★★★★
★★★★★	Carcass weight (kg)	32kg	84% (V. High)	★★★★★
★★★★★	Carcass conformation (1-15 scale)	1.55 scale	79% (High)	★★★★★
EXPECTED DAUGHTER BREEDING PERFORMANCE				
	Daughter calving difficulty (% 3 & 4)	5.3%	49% (Average)	
★★★★★	Daughter milk (kg)	12.4kg	50% (Average)	★★★★★
★☆☆☆☆	Daughter calving interval (days)	1.8d	50% (Average)	★☆☆☆☆

Genotype included in evaluation



Daughter, M Fogarty, Wicklow

- STERLING NELSON 2ND
- BANWY T-REX**
- SKERRINGTON HYACINTH 8TH
- KILBRIDE FARM NEWRY
- CLONEYGOWAN TEMPTRESS POSH**
- CLONAGHPOSH-KLOWNA

- A proven superstar - a superior maternal and terminal sire
- Earp's daughters are milky, fertile and docile
- Use to produce great brood cows with good beefing ability

- Frosty King progeny have excellent performance
- 5 star for Carcass Weight & Carcass Conformation
- Suitable for second calvers
- Progeny are very correct and classy
- Performance (+32kgs Carcass Weight) plus Milk (+12kgs)

AA5280 COOLRAIN PATRIARCH

Date of Birth: 20/08/2017

MYOSTATIN STATUS (MH): +/+

Herd Book Number:

AA NIRLM221155230581



TEST TEST SIRE

Star Rating (within breed)	Economic Indexes	€uro value per progeny	Index reliability	Star Rating (across all beef breeds)
★★★★★	REPLACEMENT	€106	44% (Average)	★★★★★
★★★★★	TERMINAL	€84	45% (Average)	★★★★★

Source ICBF July 19

Star Rating (within breed)	Key profit traits	Index value	Trait reliability	Star Rating (across all beef breeds)
EXPECTED PROGENY PERFORMANCE				
	Calving difficulty (% 3 & 4)	2.3%	50% (Average)	Calving Records: 0
★★★★★	Gestation Length (days)	-1d	47% (Average)	★★★★★
★★★★★	Docity (1-5 scale)	0 scale	47% (Average)	★★★★★
★★★★★	Carcass weight (kg)	12.2kg	46% (Average)	★★★★★
★★★★★	Carcass conformation (1-15 scale)	0.76 scale	45% (Average)	★★★★★
EXPECTED DAUGHTER BREEDING PERFORMANCE				
	Daughter calving difficulty (% 3 & 4)	6.4%	42% (Average)	
★★★★★	Daughter milk (kg)	4.9kg	45% (Average)	★★★★★
★★★★★	Daughter calving interval (days)	-3.8d	40% (Average)	★★★★★

Genotype included in evaluation

- Exciting new Angus sire with an exceptional phenotype
- Patriarch is correct, well muscled and full of style
- Performance, shape and breed character in one package



Pat. G. Sire, SAV Network



Mat. G. Sire, Rosemead Karona

SAV NET WORTH 4200
BOVA LORD BLACKWOOD H175
 BELVIN LADY BLOSSOM64'04ET IMP
 ROSEMEAD KARONA J957
COOLRAIN MEGAN
 COOLRAIN FLORRIE

AA4640 HW FARGHAL T516

Date of Birth: 17/04/2017

MYOSTATIN STATUS (MH): +/+

Herd Book Number:

AANGBRM546977401516



Star Rating (within breed)	Economic Indexes	Euro value per progeny	Index reliability	Star Rating (across all beef breeds)
★★★★★	REPLACEMENT	€124	38% (Low)	★★★★★
★★★★★	TERMINAL	€92	45% (Average)	★★★★★

Source: ICBF July 19

Star Rating (within breed)	Key profit traits	Index value	Trait reliability	Star Rating (across all beef breeds)
EXPECTED PROGENY PERFORMANCE				
	Calving difficulty (% 3 & 4)	2.3%	69% (High)	Calving Records: 66
★★★★★	Gestation Length (days)	-0.6d	83% (V. High)	★★★★★
★★★★★	Docility (1-5 scale)	0 scale	34% (Low)	★★★★★
★★★★★	Carcass weight (kg)	16.3kg	39% (Low)	★★★★★
★★★★★	Carcass conformation (1-15 scale)	0.6 scale	33% (Low)	★★★★★
EXPECTED DAUGHTER BREEDING PERFORMANCE				
	Daughter calving difficulty (% 3 & 4)	6.1%	33% (Low)	
★★★★★	Daughter milk (kg)	10.4kg	36% (Low)	★★★★★
★★★★★	Daughter calving interval (days)	-3d	32% (Low)	★★★★★

Genotype included in evaluation



Sire, Netherton Kracker



Mat. G. Sire, HF El Tigre

- Farghal's first calves were born easily and look very promising
- The sire, Netherton Kracker is producing that magic combination of calving ease, high growth and extra shape
- From the renowned Fleur family at Netherton in Scotland

S A V BRAVE 8320
NETHERTON KRACKER P790
 NETHERTON KARAMA K574
 HF EL TIGRE 28U
NETHERTON FLEUR L623
 NETHERTON FLEUR J508

AA2309 ST AODAIN L MASTER

Date of Birth: 21/03/2014
MYOSTATIN STATUS (MH): +/+

Herd Book Number:
AA NIRLM311452940296



Star Rating (within breed)	Economic Indexes	€uro value per progeny	Index reliability	Star Rating (across all beef breeds)
★★★★★	REPLACEMENT	€108	67% (High)	★★★★★★
★★★★	TERMINAL	€67	92% (V. High)	★★★★

Source (CBF July '19)



Star Rating (within breed)	Key profit traits	Index value	Trait reliability	Star Rating (across all beef breeds)
EXPECTED PROGENY PERFORMANCE				
	Calving difficulty (% 3 & 4)	3%	96% (V. High)	Calving Records: 981
★★★★★	Gestation Length (days)	-0.4d	99% (V. High)	★★★★★★
★★★★	Docity (1-5 scale)	0.01 scale	79% (High)	★★★★
★★★★★★	Carcass weight (kg)	12kg	98% (V. High)	★★★★★★
★★★★★	Carcass conformation (1-15 scale)	0.77 scale	97% (V. High)	★★★★★★
EXPECTED DAUGHTER BREEDING PERFORMANCE				
	Daughter calving difficulty (% 3 & 4)	7.1%	52% (Average)	
★★★★	Daughter milk (kg)	5.1kg	52% (Average)	★★★★
★★★★★★	Daughter calving interval (days)	-7d	54% (Average)	★★★★★★

Genotype included in evaluation



2 yo daughter from a HO dam



Sire, Cornamuckla Lord Hardy KYA

- Master has proven himself as a high performance Angus
- + 12 kg Carcass Weight (5 star). 4 star on Carcass Conformation
- Suitable for beef producers seeking high performance without compromising on calving ease

└ CARTRONROE ERNIE
CORNAMUCKLA LORD HARDY K222
 └ DRUMCROW LADY HILDA
 └ DRUMDEEVIN DANCER
ST AODAIN FREDA
 └ ST AODAIN AMY

AA4089 INTELAGRI MATTEO E.T.

Herd Book Number: **AANIRLM201083280080**
 Date of Birth: 03/06/2015 **MYOSTATIN STATUS (MH): +/-**



AA4088 INTELAGRI MAVERICK E.T.

Herd Book Number: **AANIRLM201083240077**
 Date of Birth: 31/05/2015 **MYOSTATIN STATUS (MH): +/-**



Source ICBF July 19

Star Rating (within breed)	Economic Indexes	Euro value per progeny	Index reliability	Star Rating (across breeds)
★★★★★	REPLACEMENT	€163	52% (Average)	★★★★★
★★★★★	TERMINAL	€83	65% (High)	★★★★★

Source ICBF July 19

Star Rating (within breed)	Economic Indexes	Euro value per progeny	Index reliability	Star Rating (across breeds)
★★★★★	REPLACEMENT	€136	53% (Average)	★★★★★
★★★★★	TERMINAL	€78	68% (High)	★★★★★

Star Rating (within breed)	Key profit traits	Index value	Trait reliability	Star Rating (across breeds)
EXPECTED PROGENY PERFORMANCE				
	Calving difficulty (% 3 & 4)	1.6%	97% (V. High)	Calving Records: 1229
★★★★★	Gestation Length (days)	-3.9d	99% (V. High)	★★★★★
★★★☆☆	Docility (1-5 scale)	-0.02 scale	76% (High)	★★★☆☆
★★★★★	Carcass weight (kg)	8.1kg	62% (High)	★★★★★
★★★★★	Carcass conformation (1-15 scale)	0.66 scale	49% (Average)	★★★★★
EXPECTED DAUGHTER BREEDING PERFORMANCE				
	Daughter calving difficulty (% 3 & 4)	5.8%	43% (Average)	
★★★★★	Daughter milk (kg)	12.5kg	44% (Average)	★★★★★
★★★☆☆	Daughter calving interval (days)	-4d	37% (Low)	★★★★★

Star Rating (within breed)	Key profit traits	Index value	Trait reliability	Star Rating (across breeds)
EXPECTED PROGENY PERFORMANCE				
	Calving difficulty (% 3 & 4)	2.2%	98% (V. High)	Calving Records: 2388
★★★★★	Gestation Length (days)	-3.49d	99% (V. High)	★★★★★
★★★☆☆	Docility (1-5 scale)	-0.05 scale	69% (High)	★★★☆☆
★★★★★	Carcass weight (kg)	9.5kg	66% (High)	★★★★★
★★★★★	Carcass conformation (1-15 scale)	0.49 scale	54% (Average)	★★★★★
EXPECTED DAUGHTER BREEDING PERFORMANCE				
	Daughter calving difficulty (% 3 & 4)	5.56%	43% (Average)	
★★★★★	Daughter milk (kg)	11kg	44% (Average)	★★★★★
★★★☆☆	Daughter calving interval (days)	-3.1d	38% (Low)	★★★★★

Genotype included in evaluation



Sire, Te Mania Berkley B1

TE MANIA YORKSHIRE Y437
TE MANIA BERKLEY B1
 TE MANIA LOWAN Z53 ET
 NIGHTINGALE PROUD JAKE G405
GOULDING K MISSIE 261 ET
 GOULDING MISSIE K 415

Genotype included in evaluation



Dam's full sister Missie 534

TE MANIA YORKSHIRE Y437
TE MANIA BERKLEY B1
 TE MANIA LOWAN Z53 ET
 NIGHTINGALE PROUD JAKE G405
GOULDING K MISSIE 261 ET
 GOULDING MISSIE K 415

- Easy calving, suitable for pedigree and commercial maidens
- Use to improve calving ease and gestation length without compromising on performance
- From the renowned Missie cow family

- Easy calving, suitable for pedigree and commercial maidens
- Great combination of calving ease, carcass weight & milk
- From the renowned Missie cow family

AA4087 GOULDING MAN OH MAN

Herd Book Number: **AANIRLM191198950688**
 Date of Birth: 14/03/2015 **MYOSTATIN STATUS (MH):** nt821/+



AA4323 TREE BRIDGE POWYS S589

Herd Book Number: **AANGBRM122793400589**
 Date of Birth: 27/03/2016 **MYOSTATIN STATUS (MH):** nt821/+



Star Rating (within breed)	Economic Indexes	Euro value per progeny	Index reliability	Star Rating (across breeds)
★★★★★	REPLACEMENT	€108	57% (Average)	★★★★★
★★★★★	TERMINAL	€92	76% (High)	★★★★★

Star Rating (within breed)	Key profit traits	Index value	Trait reliability	Star Rating (across breeds)
EXPECTED PROGENY PERFORMANCE				
	Calving difficulty (% 3 & 4)	4.9%	98% (V.High)	Calving Records: 1796
★★★★★	Gestation Length (days)	1.2d	99% (V.High)	★★★★★
★★★★★	Docility (1-5 scale)	0.07 scale	92% (V.High)	★★★★★
★★★★★	Carcass weight (kg)	20kg	77% (High)	★★★★★
★★★★★	Carcass conformation (1-15 scale)	0.98 scale	70% (High)	★★★★★

EXPECTED DAUGHTER BREEDING PERFORMANCE				
	Daughter calving difficulty (% 3 & 4)	6.9%	43% (Average)	
★★★★★	Daughter milk (kg)	8.3kg	46% (Average)	★★★★★
★☆☆☆☆	Daughter calving interval (days)	-2.6d	42% (Average)	★★★★★

Genotype included in evaluation



ABBERTON DAZZLE G160
ABBERTON EMINEM M285
 ABBERTON ERICA H187
 GOULDING EXTRA ET
GOULDING GRACEFUL PATRIOT ET
 DARIMA PATRIOT Z082

Goulding Belinda, National Aberdeen Angus Supreme Female Calf Champion 2018

- One of the highest performance Angus sires available
- Top 3% of the Angus breed for Carcass Weight & Conformation
- The perfect Angus for beef finishers
- Myostatin carrier, nt821 variant

Star Rating (within breed)	Economic Indexes	Euro value per progeny	Index reliability	Star Rating (across breeds)
★★★★★	REPLACEMENT	€62	43% (Average)	★★★★★
★★★★★	TERMINAL	€65	53% (Average)	★★★★★

Star Rating (within breed)	Key profit traits	Index value	Trait reliability	Star Rating (across breeds)
EXPECTED PROGENY PERFORMANCE				
	Calving difficulty (% 3 & 4)	4.9%	95% (V.High)	Calving Records: 667
★★★★★	Gestation Length (days)	0d	98% (V.High)	★★★★★
★☆☆☆☆	Docility (1-5 scale)	-0.07 scale	38% (Low)	★☆☆☆☆
★★★★★	Carcass weight (kg)	10.5kg	41% (Average)	★★★★★
★★★★★	Carcass conformation (1-15 scale)	0.61 scale	38% (Low)	★★★★★

EXPECTED DAUGHTER BREEDING PERFORMANCE				
	Daughter calving difficulty (% 3 & 4)	6.2%	37% (Low)	
★★★★★	Daughter milk (kg)	6.8kg	40% (Average)	★★★★★
★☆☆☆☆	Daughter calving interval (days)	-2.3d	35% (Low)	★★★★★

Genotype included in evaluation



YOUNG DALE HOGAN
ABBERTON DAZZLE G160
 ABBERTON DUCHESS LULU E112
 CHAPELTON DARK MAHMOUD E826
TREE BRIDGE POLLY PERKINS K281
 TREE BRIDGE POLLY PERKINS F144

Pat. Brother, Abberton Enimen

- A heavily muscled bull
- First crop of calves exhibit superior growth and shape
- The ideal Angus for beef finishers
- Myostatin carrier, nt821 variant

SA4461 SPIDDAL PAT

Herd Book Number: **SALIRLM181276270116**
Date of Birth: 03/11/2015 **MYOSTATIN STATUS (MH): +/-**



SA4604 KNOTTOWN ROY

Herd Book Number: **SALIRLM371214651745**
Date of Birth: 15/08/2016 **MYOSTATIN STATUS (MH): +/-**



Star Rating (within breed)	Economic Indexes	€uro value per progeny	Index reliability	Star Rating (across breeds)
★★★★★	REPLACEMENT	€147	50% (Average)	★★★★★
★★★★★	TERMINAL	€99	59% (Average)	★★★★★

Star Rating (within breed)	Key profit traits	Index value	Trait reliability	Star Rating (across breeds)
EXPECTED PROGENY PERFORMANCE				
	Calving difficulty (% 3 & 4)	2.6%	83% (V. High)	Calving Records: 147
★★★★★	Gestation Length (days)	1.7d	92% (V. High)	★★★★★
★★★★★	Dociity (1-5 scale)	-0.11 scale	59% (Average)	★★★★★
★★★★★	Carcass weight (kg)	19.9kg	56% (Average)	★★★★★
★★★★★	Carcass conformation (1-15 scale)	1.15 scale	48% (Average)	★★★★★
EXPECTED DAUGHTER BREEDING PERFORMANCE				
	Daughter calving difficulty (% 3 & 4)	6.3%	43% (Average)	
★★★★★	Daughter milk (kg)	9.7kg	47% (Average)	★★★★★
★★★★★	Daughter calving interval (days)	-3.1d	39% (Low)	★★★★★

Genotype included in evaluation



Son, D Kirrane, Sligo

TRAFALGAR
VARIEGOIS
SURPRISE
EGARD
ISA (FR 13)
FABIOLA

Star Rating (within breed)	Economic Indexes	€uro value per progeny	Index reliability	Star Rating (across breeds)
★★★★★	REPLACEMENT	€267	46% (Average)	★★★★★
★★★★★	TERMINAL	€121	49% (Average)	★★★★★

Star Rating (within breed)	Key profit traits	Index value	Trait reliability	Star Rating (across breeds)
EXPECTED PROGENY PERFORMANCE				
	Calving difficulty (% 3 & 4)	2.4%	55% (Average)	Calving Records: 7
★★★★★	Gestation Length (days)	-0.6d	65% (High)	★★★★★
★★★★★	Dociity (1-5 scale)	0.15 scale	49% (Average)	★★★★★
★★★★★	Carcass weight (kg)	20.7kg	52% (Average)	★★★★★
★★★★★	Carcass conformation (1-15 scale)	1.41 scale	46% (Average)	★★★★★
EXPECTED DAUGHTER BREEDING PERFORMANCE				
	Daughter calving difficulty (% 3 & 4)	5.5%	41% (Average)	
★★★★★	Daughter milk (kg)	12.5kg	48% (Average)	★★★★★
★★★★★	Daughter calving interval (days)	-4d	37% (Low)	★★★★★

Genotype included in evaluation



Mat. Grand dam

UNION
BEGUIN
SARLETTE
BURON (FR 07)
KNOTTOWN KATE
USANCE (FR 05)

- Easy calving, suitable for pedigree and commercial maidens
- Use to breed replacements without compromising on terminal traits
- Sire, Variegeois is a well proven French sire

- No. 1 bull available on Replacement Index across all breeds
- Impeccably bred; a Beguin son from a proven cow family
- Roy impresses with his docility, correctness, shape and overall quality

SH4748 BUNCRAGGY FIRE FOX (RO)(P)

Date of Birth: 06/03/2017

MYOSTATIN STATUS (MH): +/-

Herd Book Number:
MSHIRM224141430123

Star Rating (within breed)	Economic Indexes	€uro value per progeny	Index reliability	Star Rating (across all beef breeds)
★★★★★	REPLACEMENT	€126	43% (Average)	★★★★★
★★★★★	TERMINAL	€80	47% (Average)	★★★★★

Source ICBF July'19



Star Rating (within breed)	Key profit traits	Index value	Trait reliability	Star Rating (across all beef breeds)
EXPECTED PROGENY PERFORMANCE				
	Calving difficulty (% 3 & 4)	3.2%	48% (Average)	Calving Records: 0
★★★★★	Gestation Length (days)	-0.9d	59% (Average)	★★★★★
★★★★★	Docity (1-5 scale)	0.18 scale	56% (Average)	★★★★★
★★★★★	Carcass weight (kg)	21kg	51% (Average)	★★★★★
★★★★★	Carcass conformation (1-15 scale)	0.74 scale	44% (Average)	★★★★★
EXPECTED DAUGHTER BREEDING PERFORMANCE				
	Daughter calving difficulty (% 3 & 4)	8.2%	39% (Low)	
★★★★★	Daughter milk (kg)	9.4kg	44% (Average)	★★★★★
★★★★★	Daughter calving interval (days)	-1.8d	36% (Low)	★★★★★

Genotype included in evaluation



Sire, Meonhill Firefox



Mat. G. G. Sire Winalot Rodney

- Fire Fox is a complete bull, bred for calving ease, terminal & maternal traits
- He boasts a sire stack of Meonhill Fire Fox, Buffalo Lake Blockbuster & Winalot Rodney
- Fire Fox was selected by the Shorthorn committee for the Gene Ireland Programme

CHAPELTON COVENANTER I3021 (P)
MEONHILL FIRE FOX (P)
 GLENISLA WATERLOO ZOLA R73 P
 BUFFALO LAKE BLOCKBUSTER
KNOCKAGARRY WINSONIA 638 H RO
 KNOCKAGARRY WINSONIA 53RD

EMS DOON ERASMUS (RLW)

Herd Book Number: MSHIRLM311307990307
Date of Birth: 31/01/2013 MYOSTATIN STATUS (MH): +/-



SH4209 STONEYROYD HALCYON MATRIX (P)

Herd Book Number: MSHGBRM129362400021
Date of Birth: 25/02/2014 MYOSTATIN STATUS (MH): E226X/+



Star Rating (within breed)	Economic Indexes	€uro value per progeny	Index reliability	Star Rating (across breeds)
★★★★★	REPLACEMENT	€115	79% (High)	★★★★★
★★★★★	TERMINAL	€63	92% (V. High)	★★★★★

Star Rating (within breed)	Key profit traits	Index value	Trait reliability	Star Rating (across breeds)
EXPECTED PROGENY PERFORMANCE				
	Calving difficulty (% 3 & 4)	4%	98% (V. High)	Calving Records: 1604
★★★★★	Gestation Length (days)	1.5d	99% (V. High)	★★★★★
★★★★★	Docity (1-5 scale)	0.09 scale	97% (V. High)	★★★★★
★★★★★	Carcass weight (kg)	15.7kg	98% (V. High)	★★★★★
★★★★★	Carcass conformation (1-15 scale)	0.97 scale	97% (V. High)	★★★★★

EXPECTED DAUGHTER BREEDING PERFORMANCE				
	Daughter calving difficulty (% 3 & 4)	6.8%	76% (High)	
★★★★★	Daughter milk (kg)	5.1kg	82% (V. High)	★★★★★
★★★★★	Daughter calving interval (days)	-2.5d	54% (Average)	★★★★★

Genotype included in evaluation



Daughter, Glann Jayne, All Ireland yearling heifer, Limerick 2019

- ALTA CEDAR PRAIRIE STORM 47R
- ALTA CEDAR PERFECT STORM 11U
- ALTA CEDAR SILVER MAISIE 59S
- LICKEEN ENDA 5TH
- BUSHYPARK LASSIE 3RD (RO)
- BUSHYPARK LASSIE

Star Rating (within breed)	Economic Indexes	€uro value per progeny	Index reliability	Star Rating (across breeds)
★★★★★	REPLACEMENT	€102	43% (Average)	★★★★★
★★★★★	TERMINAL	€14	57% (Average)	★★★★★

Star Rating (within breed)	Key profit traits	Index value	Trait reliability	Star Rating (across breeds)
EXPECTED PROGENY PERFORMANCE				
	Calving difficulty (% 3 & 4)	6.5%	89% (High)	Calving Records: 305
★★★★★	Gestation Length (days)	-0.5d	93% (V. High)	★★★★★
★★★★★	Docity (1-5 scale)	0.23 scale	80% (V. High)	★★★★★
★★★★★	Carcass weight (kg)	4.7kg	51% (High)	★★★★★
★★★★★	Carcass conformation (1-15 scale)	0.54 scale	41% (Average)	★★★★★

EXPECTED DAUGHTER BREEDING PERFORMANCE				
	Daughter calving difficulty (% 3 & 4)	6.08%	33% (Low)	
★★★★★	Daughter milk (kg)	11kg	31% (Low)	★★★★★
★★★★★	Daughter calving interval (days)	-1.6d	33% (Low)	★★★★★

Genotype included in evaluation



Daughter, A. Flats, dam is a Kilkelly Major KKJ cow

- GLENFORD GUS 4H (P)
- STAR P MATRIX 4N X
- T BAR JODIE ROSE 9905
- DIAMOND CAPTAIN MARK 27C (P)
- PRAIRIE LANE SPARKLE 1K (P)
- PRAIRIE LANE DELIGHT 1D (P)

- A proven high performance shorthorn, 5 star for Carcass Weight & Conformation
- Use to produce replacements while maintaining the growth and shape
- Suitable for second calvers

- Matrix progeny exhibit excellent length, weight and muscle development
- Use to produce milky replacements without compromising on terminal traits
- Suitable for use on second calvers

HE4344 ALLOWDALE RAMBO 475

Herd Book Number: **HERIRLM151225390475**
 Date of Birth: 27/06/2014 **MYOSTATIN STATUS (MH): +/-**



Sire

- NEW
- CALVING EASE MATURE ONLY
- FINISHING
- HORNED

HE5346 FISHER 1 PROFILE P456

Herd Book Number: **HERGBRM263027500456**
 Date of Birth: 02/03/2017 **MYOSTATIN STATUS (MH): +/-**



Sire

- NEW
- TEST TEST SIRE
- HOMOZYGOUS POLLED

Star Rating (within breed)	Economic Indexes	Euro value per progeny	Index reliability	Star Rating (across breeds)
★★★★★	REPLACEMENT	€172	58% (Average)	★★★★★
★★★★★	TERMINAL	€91	64% (High)	★★★★★

Star Rating (within breed)	Key profit traits	Index value	Trait reliability	Star Rating (across breeds)
EXPECTED PROGENY PERFORMANCE				
	Calving difficulty (% 3 & 4)	4.2%	74% (High)	Calving Records: 0
★★★★★	Gestation Length (days)	-0.4d	86% (V. High)	★★★★★
★★★★★	Docility (1-5 scale)	0.16 scale	75% (High)	★★★★★
★★★★★	Carcass weight (kg)	19.9kg	68% (High)	★★★★★
★★★★★	Carcass conformation (1-15 scale)	0.57 scale	58% (Average)	★★★★★

EXPECTED DAUGHTER BREEDING PERFORMANCE				
	Daughter calving difficulty (% 3 & 4)	5%	44% (Average)	
★★★★★	Daughter milk (kg)	12.5kg	58% (Average)	★★★★★
★★★★★	Daughter calving interval (days)	-3.9d	39% (Low)	★★★★★

Genotype included in evaluation



Mat. G. Sire, Bowmount Storm

GH RAMBO 279R
ALLOWDALE RAMBO ET {HYF}
 GH PERFORMANCE PASSION 1265
 BOWMOUNT STORM A584
ALLOWDALE PRETTYMAID 275
 BALLEEN PRETTYMAID 16TH

- Top 1% of the HE breed for Replacement, Terminal and Carcass Weight
- Rambo 475 is a proven sire producing animals with very high performance, No. 2 He bull on Replacement index
- Calves are extremely lively at birth

Star Rating (within breed)	Economic Indexes	Euro value per progeny	Index reliability	Star Rating (across breeds)
★★★★★	REPLACEMENT	€106	31% (Low)	★★★★★
★★★★★	TERMINAL	€81	31% (Low)	★★★★★

Star Rating (within breed)	Key profit traits	Index value	Trait reliability	Star Rating (across breeds)
EXPECTED PROGENY PERFORMANCE				
	Calving difficulty (% 3 & 4)	3.6%	31% (Low)	Calving Records: 0
★★★★★	Gestation Length (days)	-0.1d	31% (Low)	★★★★★
★★★★★	Docility (1-5 scale)	0.09 scale	31% (Low)	★★★★★
★★★★★	Carcass weight (kg)	8.7kg	31% (Low)	★★★★★
★★★★★	Carcass conformation (1-15 scale)	0.78 scale	31% (Low)	★★★★★

EXPECTED DAUGHTER BREEDING PERFORMANCE				
	Daughter calving difficulty (% 3 & 4)	5.6%	31% (Low)	
★★★★★	Daughter milk (kg)	3.1kg	31% (Low)	★★★★★
★★★★★	Daughter calving interval (days)	-4d	31% (Low)	★★★★★

Genotype included in evaluation



3/4 brother, Fisher 1 Prospect

FISHER 1 CRACKER
FISHER 1 JAGUAR J347 {HYF}
 FISHER 1 EVA C190
 YALGOO BOULDER Z250
FISHER 1 SUSAN H338
 FISHER 1 SUSAN P7

- Profile is a homozygous polled bull with a superb phenotype
- Profile is correct and exceptionally well muscled with a square wide pelvis
- From a proven cow family
- 3/4 brother was the 2019 Royal Three Counties Breed Champion

HE5452 ALLOWDALE AXEL

Herd Book Number: **HERIRLM217776440835**
 Date of Birth: 17/02/2018 **MYOSTATIN STATUS (MH): +/-**



NEW TEST SIRE HORNED

HE5298 ALLOWDALE APACHE

Herd Book Number: **HERIRLM151225370738**
 Date of Birth: 07/03/2017 **MYOSTATIN STATUS (MH): +/-**



NEW TEST SIRE HORNED

Star Rating (within breed)	Economic Indexes	Euro value per progeny	Index reliability	Star Rating (across breeds)
★★★★★	REPLACEMENT	€79	41% (Average)	★★★★★
★★★★★	TERMINAL	€98	43% (Average)	★★★★★

Star Rating (within breed)	Key profit traits	Index value	Trait reliability	Star Rating (across breeds)
EXPECTED PROGENY PERFORMANCE				
	Calving difficulty (% 3 & 4)	2.6%	48% (Average)	Calving Records: 0
★★★★★	Gestation Length (days)	-0.2d	60% (Average)	★★★★★
★★★★★	Docity (1-5 scale)	0.22 scale	47% (Average)	★★★★★
★★★★★	Carcass weight (kg)	18.1kg	43% (Average)	★★★★★
★★★★★	Carcass conformation (1-15 scale)	0.63 scale	41% (Average)	★★★★★
EXPECTED DAUGHTER BREEDING PERFORMANCE				
	Daughter calving difficulty (% 3 & 4)	5.7%	37% (Low)	
★★★★★	Daughter milk (kg)	1.1kg	43% (Average)	★★★★★
★★★★★	Daughter calving interval (days)	-3d	34% (Low)	★★★★★

Genotype included in evaluation



Sire, Border Rory D35

— BORDER RORY A36
BORDER RORY D35 (HYC)
 — BORDER CURLY W6
 — ALLOWDALE RAMBO ET {HYF}
ALLOWDALE BLOSSOM 458
 — HAVEN BLOSSOM 3RD

Star Rating (within breed)	Economic Indexes	Euro value per progeny	Index reliability	Star Rating (across breeds)
★★★★★	REPLACEMENT	€154	45% (Average)	★★★★★
★★★★★	TERMINAL	€71	48% (Average)	★★★★★

Star Rating (within breed)	Key profit traits	Index value	Trait reliability	Star Rating (across breeds)
EXPECTED PROGENY PERFORMANCE				
	Calving difficulty (% 3 & 4)	3.8%	50% (Average)	Calving Records: 0
★★★★★	Gestation Length (days)	-0.1d	60% (Average)	★★★★★
★★★★★	Docity (1-5 scale)	0.17 scale	57% (Average)	★★★★★
★★★★★	Carcass weight (kg)	11.8kg	52% (Average)	★★★★★
★★★★★	Carcass conformation (1-15 scale)	0.72 scale	45% (Average)	★★★★★
EXPECTED DAUGHTER BREEDING PERFORMANCE				
	Daughter calving difficulty (% 3 & 4)	4.9%	40% (Low)	
★★★★★	Daughter milk (kg)	10kg	45% (Average)	★★★★★
★★★★★	Daughter calving interval (days)	-4.8d	37% (Low)	★★★★★

Genotype included in evaluation



Sire, Allowdale Rambo

— GH RAMBO 279R
ALLOWDALE RAMBO ET {HYF}
 — GH PERFORMANCE PASSION 1265
 — GAGEBORO EUGENIC
ALLOWDALE PANSY 213
 — BALLEEN PANSY 32

- Axel boasts two exceptional sires in his pedigree, Border Rory is the No. 1 bull on terminal index, Allowdale Rambo is No. 3.
- Axel himself is a very classy, very well muscled bull
- Axel is bred for calving ease, short gestation and shape

- Apache is a correct, long, very well-muscled bull
- His sire Rambo (HE2027) is the No. 1 bull on Replacement index and No. 3 on Terminal index
- Apache is bred for high performance and shape
- From the renowned Pansy cow family at Baleen

PT4570 KILGULBIN PARTHENAISE LOGAN

Herd Book Number: **PARIRLM191242891069**
 Date of Birth: 05/12/2016 **MYOSTATIN STATUS (MH):** nt821/nt821



BA2308 STONELEA INZAGI

Herd Book Number: **BAQIRLM311056340079**
 Date of Birth: 05/04/2014 **MYOSTATIN STATUS (MH):** +/-



Star Rating (within breed)	Economic Indexes	€uro value per progeny	Index reliability	Star Rating (across breeds)
★★★★★	REPLACEMENT	€165	42% (Average)	★★★★★
★★★★★	TERMINAL	€156	52% (Average)	★★★★★

Star Rating (within breed)	Key profit traits	Index value	Trait reliability	Star Rating (across breeds)
EXPECTED PROGENY PERFORMANCE				
	Calving difficulty (% 3 & 4)	4.9%	47% (Average)	Calving Records: 0
★★★★★	Gestation Length (days)	1.8d	42% (Average)	★★★★★
★★★★★	Docility (1-5 scale)	0.04 scale	48% (Average)	★★★★★
★★★★★	Carcass weight (kg)	31.6kg	61% (High)	★★★★★
★★★★★	Carcass conformation (1-15 scale)	2.43 scale	56% (Average)	★★★★★
EXPECTED DAUGHTER BREEDING PERFORMANCE				
	Daughter calving difficulty (% 3 & 4)	6.7%	37% (Low)	
★★★★★	Daughter milk (kg)	1.7kg	42% (Average)	★★★★★
★★★★★	Daughter calving interval (days)	-0.2d	34% (Low)	★★★★★

Genotype included in evaluation



Sire, Coquin

- AZIMUT
- COQUIN**
- RECONNUE
- BOURVIL
- ISAMINE**
- GALINTINE

Star Rating (within breed)	Economic Indexes	€uro value per progeny	Index reliability	Star Rating (across breeds)
★★★☆☆	REPLACEMENT	€47	55% (Average)	★★★☆☆
★★★☆☆	TERMINAL	€126	77% (High)	★★★★★

Star Rating (within breed)	Key profit traits	Index value	Trait reliability	Star Rating (across breeds)
EXPECTED PROGENY PERFORMANCE				
	Calving difficulty (% 3 & 4)	7.2%	93% (V. High)	Calving Records: 467
★★★☆☆	Gestation Length (days)	5.7d	95% (V. High)	★★★☆☆
★★★★★	Docility (1-5 scale)	-0.03 scale	91% (V. High)	★★★★★
★★★★★	Carcass weight (kg)	30.5kg	81% (V. High)	★★★★★
★★★★★	Carcass conformation (1-15 scale)	2.33 scale	76% (High)	★★★★★
EXPECTED DAUGHTER BREEDING PERFORMANCE				
	Daughter calving difficulty (% 3 & 4)	4.7%	39% (Low)	
★★★☆☆	Daughter milk (kg)	-6.6kg	42% (Average)	★★★☆☆
★★★★★	Daughter calving interval (days)	0.4d	39% (Low)	★★★★★

Genotype included in evaluation



Son, O Keaveney, Roscommon

- ASHTONLODGE TYSON
- SEAVIEW BARNEY**
- SEAVIEW TWINKLE
- SHANVALLEY DANCER
- SEAVIEW GEMMA**
- SEAVIEW AIMEE

- Logan was selected by the Parthenaise committee for entry to the Gene Ireland Maternal programme
- No. 1 Parthenaise commercially available on Replacement Index
- Sired by the proven, easy calving, docile French sire, Coquin,

- Top 1% across all breeds on Carcass Conformation; top 4% on Carcass Weight
- Proven high performance terminal sire
- Use to produce superior weanlings and finished cattle

AU4683 TURLOUGHMORE MAGNIFICENT

Herd Book Number: **AUBIRLM181464730595**
 Date of Birth: 20/01/2017 **MYOSTATIN STATUS (MH): +/- (2F94L)**



AU4563 JOHNSTOWN LOYD 1039

Herd Book Number: **AUBIRLM361414391790**
 Date of Birth: 15/10/2016 **MYOSTATIN STATUS (MH): +/- (2F94L)**



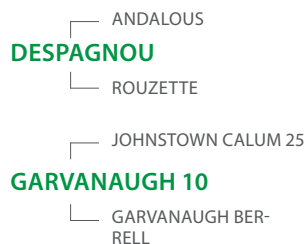
Star Rating (within breed)	Economic Indexes	€uro value per progeny	Index reliability	Star Rating (across breeds)
★★★★★	REPLACEMENT	€196	46% (Average)	★★★★★
★★★★★	TERMINAL	€147	48% (Average)	★★★★★

Star Rating (within breed)	Key profit traits	Index value	Trait reliability	Star Rating (across breeds)
EXPECTED PROGENY PERFORMANCE				
	Calving difficulty (% 3 & 4)	3.2%	51% (Average)	Calving Records: 0
★★★★★	Gestation Length (days)	0.8d	59% (Average)	★★★★★
★★★★★	Docity (1-5 scale)	0.19 scale	60% (High)	★★★★★
★★★★★	Carcass weight (kg)	23.9kg	50% (Average)	★★★★★
★★★★★	Carcass conformation (1-15 scale)	2.3 scale	47% (Average)	★★★★★
EXPECTED DAUGHTER BREEDING PERFORMANCE				
	Daughter calving difficulty (% 3 & 4)	5.8%	42% (Average)	
★★★★★	Daughter milk (kg)	3.6kg	47% (Average)	★★★★★
★★★★★	Daughter calving interval (days)	-3d	39% (Low)	★★★★★

Genotype included in evaluation



Paternal sister



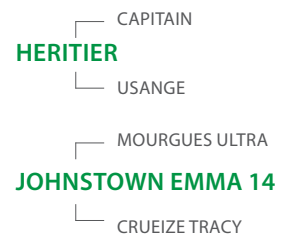
Star Rating (within breed)	Economic Indexes	€uro value per progeny	Index reliability	Star Rating (across breeds)
★★★★★	REPLACEMENT	€183	46% (Average)	★★★★★
★★★★★	TERMINAL	€141	54% (Average)	★★★★★

Star Rating (within breed)	Key profit traits	Index value	Trait reliability	Star Rating (across breeds)
EXPECTED PROGENY PERFORMANCE				
	Calving difficulty (% 3 & 4)	0.9%	53% (Average)	Calving Records: 6
★★★★★	Gestation Length (days)	0.73d	59% (Average)	★★★★★
★★★★★	Docity (1-5 scale)	0.19 scale	64% (High)	★★★★★
★★★★★	Carcass weight (kg)	18.8kg	60% (High)	★★★★★
★★★★★	Carcass conformation (1-15 scale)	2.18 scale	54% (Average)	★★★★★
EXPECTED DAUGHTER BREEDING PERFORMANCE				
	Daughter calving difficulty (% 3 & 4)	6.82%	38% (Low)	
★★★★★	Daughter milk (kg)	4kg	45% (Average)	★★★★★
★★★	Daughter calving interval (days)	-1.6d	36% (Low)	★★★★★

Genotype included in evaluation



Paternal sister, Overall Aubrac Champion Tullamore '18



- Top 1% on Replacement Index across breed
- No. 1 Aubrac available on Terminal Index
- Use to produce replacements without compromising on terminal traits

- Loyd was bred for calving ease, milk and docility
- His sire Heritier is a proven easy calving French bull
- Dam was Aubrac Champion at the 2010 Beef Expo

BETTER FACILITIES FOR YOUR TECHNICIAN, BETTER FERTILITY RESULTS



Maximise your herd fertility performance

Insemination is a job requiring a lot of precision to maximise conception rates.

The technician needs to be able to go in directly behind the cow as the semen needs to be placed in a 2 X 1cm area. This requires precision.

The animal needs to be restrained to avoid side to side movement and forward and backward movement. It is of utmost importance that the technician is not rushed in depositing the semen because the animal is going to move.

Crush and collecting yard Herdowner presence.

Try and have the crush clean. Herdowners are rarely in the crush and it can easily be forgotten. A slippery crush is a hazard. In warm dry weather it may be necessary to wet the floor of the crush to avoid it becoming slippery.

Ensure all the gates swing and latch freely and the entire crush and holding pen is of sufficient strength and in good condition to restrain your animals.

To ensure the technician can inseminate with maximum precision it is crucial that he/she isn't concerned about safety for any reason. Ensure that you have a vet gate or an end gate in the crush to prevent other animals crushing the technician while he/she is inseminating the first one.

Animals can pull free from headgates and a backing bar is extremely useful in avoiding the technician getting crushed.

Facilities need to be suitable for multiple handlings and minimise stress to the animals. If the herd size has increased and the facilities have not increased accordingly or if heifers are in an outside place with poorer handling facilities- this can be partly overcome by the herdowner being available to help the technician during the insemination.



Multiple animals to be inseminated **- Herdowner presence required.**

Where there are several animals to be inseminated on the day, be available when the technician arrives to help him/her. The majority of crushes are not easily loaded. Help is greatly appreciated by the technicians in loading and unloading the crush and in the identification of the cows. This will allow the technician to do a much better job as the animals are more relaxed and load into the crush much easier without any stress.



Avoid Stress on the Animal **- Temperamental animals are a safety hazard -** **Herdowner presence required**

Try and avoid a single animal in the yard/crush on her own- even though she may normally be of good temperament. When in a yard on her own with a stranger advancing towards her, it can lead to her getting anxious. Slip gate out of the pen at the back of the crush is crucial to escape from temperamental animals.

Pair her with another animal and clearly spray or communicate on a whiteboard or note which one is to be inseminated.



Communication & Synchronisation in cows and heifers

Meet your technician prior to the season to discuss visit times and sires required. Have an agreed method of communication – White board or notes in designated area or text.

When planning to synchronise a group of cows or heifers talk to your technician prior to starting the programme to agree the date and time of insemination. This will determine whether you will start the programme am or pm and it will ensure that the technician has planned for a longer visit on your farm.

Biosecurity

Have a footbath available where the technician enters the yard to allow him/her dip the boots.

Have a wash up hose available to ensure they can be clean going to the next farm.

Have a bin/ barrel or a bag available for the disposables.



REPLACEMENT LIMOUSIN BULLS

	Name	Code	Replacement Index	Rel	Stars Within	Stars Across	Calving Difficulty (%)	Rel	Gestation (days)	Docility (1-5 scale)	Daughter Calving (%)	Daughter Milk (kg)	Daughter Calving Interval (fertility)	Terminal Index	Rel	Stars Within	Stars Across	Carcass Weight (kgs)	Carcass Conformation (1-15 scale)
Available in the tank	MOONDHARRIG KNELL	LM4217	€167	56	5	5	4.6	98	2.82	-0.14	5.36	8	-0.4	€118	69	2	4	20.9	2.07
Available in the tank	CROSS LIAM	LM4591	€154	48	5	5	5	56	3.95	0.06	5.89	5	-0.7	€105	48	1	3	19.4	2.05
Pre-Order	GRENACHE	LM4351	€144	48	5	5	2.4	85	4.96	-0.01	5.57	7	0.4	€108	61	1	3	18.6	1.73
Available in the tank	CASTLEVIEW GAZELLE	ZAG	€140	93	5	5	4.2	99	3.92	-0.03	8.09	-2	-6.6	€122	97	3	4	19.8	2.18
Pre-Order	EDAKKYA	LM2242	€138	57	5	5	5.3	87	2.87	-0.03	4.39	2	0.5	€150	78	5	5	32.7	2.29
Available in the tank	TOMSCHOICE IMPERIAL	LM2117	€137	67	5	5	8.1	99	1.54	-0.12	4.54	4	1.2	€130	94	4	5	26	2.45
Pre-Order	GOLDIES JACKPOT	S3104	€119	53	5	5	9	91	5.05	0.03	3.33	7	2.5	€145	65	5	5	37.5	2.62
Available in the tank	CASIMIR 65	LM2065	€102	71	4	4	6.8	93	3.28	-0.12	3.89	-4	0.2	€130	86	4	5	30.4	2.27
Pre-Order	KARLOS PP	S3253	€100	32	4	4	3.1	39	2.29	0.04	5.72	1	-0.6	€99	33	1	3	13	1.47
Pre-Order	CAMEOS	LM2191	€100	65	4	4	4.5	92	3.23	-0.07	4.88	4	5.0	€136	83	4	5	28.2	1.88
Available in the tank	AHERLA K 7 P	LM4360	€100	43	4	4	4.6	89	0.86	-0.01	4.9	0	1.3	€115	52	2	4	21.2	1.73
Pre-Order	DIMOIWII	LM2388	€97	60	4	4	5.7	98	3.37	-0.14	3.8	5	4.9	€99	73	1	3	21	1.59

Data: (€€€ July '19, Within breed stars are only relevant for pedigree registered cattle)

REPLACEMENT PARTHENAISE BULLS

Available in the tank	KILGULBIN PARTHENAISE LOGAN	PT4570	€165	42	5	5	4.9	47	1.8	0.04	6.65	2	-0.2	€156	52	5	5	31.6	2.43
Pre-Order	DAX	S1436	€135	53	5	5	5.3	71	3.16	-0.17	4.94	1	0.0	€149	63	5	5	35.6	1.99
Available in the tank	HURRICANE GONZO	ZGH	€135	77	5	5	8.4	96	5.99	0.02	8.94	2	-3.3	€104	91	1	3	21.7	2.41
Pre-Order	AIOILI	PT2201	€127	68	4	5	5.8	87	1.76	-0.06	4.94	5	0.2	€147	80	4	5	37.3	2.14

REPLACEMENT BLONDE D'AQUITAINE BULLS

Pre-Order	BLACKWATER AINSLEY	S985	€101	75	5	4	4.7	89	3.99	-0.01	4.46	-8	-3.8	€151	83	5	5	30.1	2.42
Pre-Order	HASHTAG	BA4550	€98	42	5	4	2.6	62	2.94	-0.06	6.19	2	0.6	€104	50	1	3	9.9	2.05
Pre-Order	ANETO	S1266	€97	68	5	4	4.6	85	3.18	0.14	6.91	-4	-2.7	€121	77	2	4	16.8	2.59



LM4217 MOONDHARRIG KNELL



LM4591 CROSS LIAM



LM4351 GRENACHE



LM2242 EDAKKYA



LM2117 TOMSCHOICE IMPERIAL



ZAG CASTLEVIEW GAZELLE

REPLACEMENT SIMMENTAL BULLS

Available in the tank
Pre-Order

	Name	Code	Replacement Index	Rel	Stars Within	Stars Across	Calving Difficulty (%)	Rel	Gestation (days)	Dolity (1 - 5 scale)	Daughter Calving (%)	Daughter Milk (kg)	Daughter Calving Interval (fertility)	Terminal Index	Rel	Stars Within	Stars Across	Carcass Weight (kgs)	Carcass Conformation (1-15 scale)
Available in the tank	CURAHEN EARP	SI2152	€170	80	5	5	5	99	1.91	0.11	6.32	5	-3.7	€106	96	5	3	27	1.74
Available in the tank	LIS-NA-RI GUCCI	SI4250	€162	53	5	5	3.9	86	1.94	0.1	5.87	9	-2.9	€76	61	3	2	15.6	1.69
Available in the tank	LISNACRANN FIFTY CENT	SI2469	€159	73	5	5	4.6	99	0.77	0.13	6.89	8	-1.8	€75	95	3	2	18.3	1.26
Available in the tank	RUBYJEN HERE'S JOHNNY	SI4350	€149	48	5	5	5.6	63	1.44	0.11	5.8	10	-1.0	€84	52	4	3	23.7	1.49
Available in the tank	KICKHAMS HANDSOME	SI4322	€142	52	5	5	6.4	86	1.64	0.11	5.61	12	-2.5	€90	59	5	3	30	1.38
Available in the tank	LEEHERD JAKE 319	SI5292	€130	45	4	5	3.2	50	0.32	0.04	6.08	11	1.2	€79	48	4	3	19.7	1.31
Available in the tank	CLONAGH FROSTY KINGET	SI4083	€128	63	4	5	5	97	2.28	0.06	5.26	12	1.8	€111	84	5	4	32	1.55
Available in the tank	KEELDRUM CAPONE 11	KEZ	€122	91	3	5	6.6	99	3.38	0.11	7.67	5	-1.2	€79	93	4	3	22.7	1.43
Available in the tank	BEARNA-DHEARG HATCHET	SI4593	€118	47	3	5	7.1	50	1.97	0.13	5.3	6	-0.1	€100	48	5	3	31.9	1.69
Available in the tank	BEARNA-DHEARG HONDA 50	SI4595	€107	46	2	5	6.4	49	1.24	0.03	5.91	10	1.6	€90	47	5	3	28.7	1.5
Available in the tank	LEEHERD HARRY 286	SI4347	€103	48	2	4	3.5	77	2.29	0.06	6.96	9	1.4	€77	54	3	2	22.3	1.26

Data: ICBF July '19. Within breed stars are only relevant for pedigree registered cattle

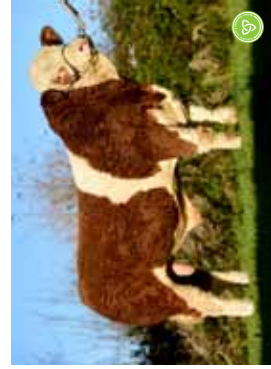
REPLACEMENT AUBRAC BULLS

Available in the tank
Available in the tank

Available in the tank	TURLOUGHMORE MAGNIFICENT	AU4683	€196	46	5	5	3.2	51	0.82	0.19	5.82	4	-3.0	€147	48	5	5	23.9	2.3
Available in the tank	JOHNSTOWN LOYD 1039	AU4563	€183	46	5	5	0.9	53	0.73	0.19	6.82	4	-1.6	€141	54	5	5	18.8	2.18



SI2152 CURAHEN EARP



SI4250 LIS-NA-RI GUCCI



SI2469 LISNACRANN FIFTY CENT



SI4350 RUBYJEN HERE'S JOHNNY



AU4563 JOHNSTOWN LOYD 1039

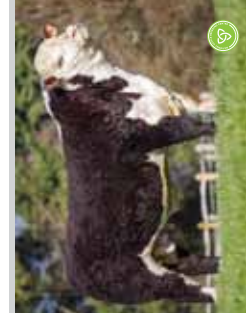
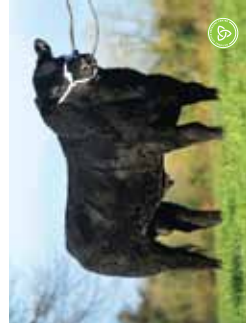
REPLACEMENT HEREFORD BULLS

Available in the tank	Pre-Order	Name	Code	Replacement Index	Rel	Stars Within	Stars Across	Calving Difficulty (%)	Rel	Gestation (days)	Docility (1 - 5 scale)	Daughter Calving (%)	Daughter Milk (kg)	Daughter Calving Interval (fertility)	Terminal Index	Rel	Stars Within	Stars Across	Carass Weight (kgs)	Carass Conformation (1-15 scale)
Available in the tank		ALLOWDALE RAMBO 475	HE4344	€172	58	5	5	4.2	74	-0.39	0.16	5.04	13	-3.9	€91	64	5	3	19.9	0.57
Available in the tank		ALLOWDALE APACHE	HE5298	€154	45	5	5	3.8	50	-0.09	0.17	4.92	10	-4.8	€71	48	5	2	11.8	0.72
Available in the tank		MOORSIDE 1 PANDA (PP) {HYF}	HE4643	€127	36	5	5	2.7	74	-1.09	0.14	5.18	6	-2.6	€83	43	5	3	8.5	0.44
Available in the tank		MOORSIDE 1 PRESIDENT (PP) {HYF}	HE4641	€113	40	5	5	4.9	77	-1.87	0.25	4.76	6	-3.9	€59	52	5	2	8.2	0.53
Available in the tank		FISHER 1 PROFILE P456 (PP) {HYF}	HE5346	€106	31	5	5	3.6	31	-0.14	0.09	5.55	3	-4.0	€81	31	5	3	8.7	0.78
Pre-Order		FISHER 1 JAGUAR J347 (PP) {HYF}	S3315	€105	33	5	5	3.9	33	-0.56	0.17	5.32	4	-3.9	€87	33	5	3	11.6	0.62
Available in the tank		SOLPOLL 1 KENTUCKY KID (PP) {HYF}	HE2043	€98	73	5	4	3.2	99	-0.62	0.15	6.21	-1	-6.1	€45	93	3	1	-2.8	0.66
Available in the tank		FABB 1 NORTHERN STAR (PP) {HYF}	HE4297	€95	42	5	4	3.1	96	-1.78	0.14	5.34	6	-3.4	€46	59	3	1	-2	0.21
Pre-Order		NORMANTON 1 LAERTES (PP) {HYF}	HE4287	€94	38	5	4	4.6	65	-0.86	0.23	5.28	6	-3.2	€70	44	5	2	11.3	0.6
Available in the tank		BARWISE 1 RICOCHET (PP) {HYF}	HE5455	€92	31	5	4	2.9	36	-0.86	0.06	5.04	5	-3.5	€51	33	4	1	-0.5	0.36

Data: (€)€ July '19. Within breed stars are only relevant for pedigree registered cattle

REPLACEMENT ANGUS BULLS

Available in the tank		SALLOWGLEN JAMIE T771	AA4632	€172	43	5	5	0.9	71	-2.43	0.01	6.4	11	-5.1	€86	49	5	3	11.4	0.7
Available in the tank		INTELAGRI MATTEO E.T.	AA4089	€163	52	5	5	1.6	97	-3.87	-0.02	5.78	13	-4.0	€83	65	5	3	8.1	0.66
Available in the tank		HW ADONNIS T243	AA4639	€160	36	5	5	1.2	66	-2.8	0.06	6.43	11	-3.1	€115	44	5	4	19.6	0.62
Available in the tank		GABRIEL POUNDMAN	AA5310	€156	47	5	5	1.1	50	-2.71	0	6.12	8	-7.0	€81	47	5	3	6.2	0.69
Pre-Order		SRV HEDEBO KNOBEL ET	SVK	€152	85	5	5	2.2	94	0.76	-0.04	5.56	8	-5.4	€78	87	5	3	11.5	0.62
Pre-Order		WEETON DIAMOND MINE P444	S3127	€151	41	5	5	4.4	61	0.24	0.07	6.06	12	-2.6	€118	53	5	4	27.9	0.73
Available in the tank		INTELAGRI MAVERICK E.T.	AA4088	€136	53	5	5	2.2	98	-3.49	-0.05	5.56	11	-3.1	€78	68	5	3	9.5	0.49
Pre-Order		COONAMBLE ELEVATOR E11	S2330	€128	45	5	5	2.5	61	-2.06	0.01	6.12	8	-2.6	€107	52	5	3	20.4	0.75
Available in the tank		HW FARGHAL T516	AA4640	€124	38	5	5	2.3	69	-0.64	0	6.12	10	-3.0	€92	45	5	3	16.3	0.6
Pre-Order		LUDDENMORE EDGE S282	AA4642	€113	42	4	5	4.2	47	-0.25	-0.03	5.57	8	-3.1	€123	51	5	4	27.2	1.19
Available in the tank		ST AODAIN L MASTER	AA2309	€108	67	4	5	3	96	-0.38	0.01	7.14	5	-7.0	€67	92	3	2	12	0.77
Available in the tank		COOLRAIN PATRIARCH	AA5280	€106	44	4	5	2.3	50	-1.03	0	6.38	5	-3.8	€84	45	5	3	12.2	0.76
Pre-Order		MOSSHALL RED PHARAOH M172	AA2068	€105	42	4	5	0.6	61	-1.23	0.01	6.69	3	-4.2	€77	47	4	2	5.7	0.67
Pre-Order		LILEY RED DESIGNER R201	S3257	€104	33	4	5	2.4	34	2.27	0.05	7.03	7	-2.7	€77	34	4	2	10.8	0.92
Pre-Order		HF REBEL 53Y	ZHF	€103	68	4	4	2.5	90	-2.69	0.04	6.45	7	-3.3	€86	83	5	3	12.8	0.79
Pre-Order		MILLAH MURRAH KLOONEY K42	AA4135	€94	31	3	4	0.8	34	-1.26	0.03	6.69	6	-3.2	€57	31	2	2	1	0.5



AA4639 HW ADONNIS T243

AA4089 INTELAGRI MATTEO E.T.

AA4642 LUDDENMORE EDGE S282

AA5280 COOLRAIN PATRIARCH

HE5298 ALLOWDALE APACHE

HE5346 FISHER 1 PROFILE P456 (PP) (HYF)

REPLACEMENT CHAROLAIS BULLS

Available in the tank
Pre-Order

	Name	Code	Replacement Index	Rel	Stars Within	Stars Across	Calving Difficulty (%)	Rel	Gestation (days)	Dolity (1 - 5 scale)	Daughter Calving (%)	Daughter Milk (kg)	Daughter Calving Interval (fertility)	Terminal Index	Rel	Stars Within	Stars Across	Carass Weight (kgs)	Carass Conformation (1-15 scale)
Pre-Order	ARTOIS	CH2215	€131	57	5	5	4.7	79	2.67	0.23	3.4	-1	-0.3	€164	70	5	5	43.9	1.61
Pre-Order	TREZEGOAL	TZL	€122	74	5	5	5.1	91	1.13	0.1	3.4	2	-2.0	€130	84	4	5	31.6	1.8
Available in the tank	FISTON	FSZ	€112	95	5	5	6.6	99	3.62	0.08	5.63	-4	-4.6	€156	96	5	5	40.1	2.32
Pre-Order	VOIMO	VMO	€109	71	5	5	6.3	93	1.64	0.08	3.4	4	-0.8	€121	84	3	4	31.3	1.76
Available in the tank	LISERON	CH4320	€105	46	5	5	7	91	2.36	0.09	3.74	3	-1.9	€133	57	4	5	37.3	1.81
Available in the tank	LAPON	CH4321	€95	40	5	4	5.5	77	2.13	-0.04	5.22	2	-1.0	€153	48	5	5	41	1.86
Pre-Order	NIPPUR	NPP	€94	96	5	4	6.6	99	1.81	0.05	2.22	-5	-4.0	€111	93	2	4	28.7	1.54
Pre-Order	AZELIER	S1639	€92	55	5	4	6.9	67	1.73	0.06	5.14	5	-2.1	€117	62	2	4	30.7	1.73
Available in the tank	FIRODA JASON	CH4082	€86	62	5	4	9.3	97	3.13	0.14	4.88	-3	-3.8	€127	80	3	4	38.2	2.22
Available in the tank	GOLDSTAR LUDWIG	CH4251	€84	56	5	3	7.5	94	1.72	0.17	5.45	-4	-2.5	€145	65	5	5	40.7	2.1
Pre-Order	CASTOR	CH2217	€84	61	5	3	5.4	86	1.25	-0.01	3.4	2	-2.7	€117	76	2	4	31.5	1.51

Data: (CBF July '19, Within breed stars are only relevant for pedigree registered cattle)

REPLACEMENT PIEDMONTESE BULLS

Available in the tank

SANDYMOUNT NORDIC	PI4566	€124	41	4	5	4.5	45	3.92	-0.01	10.9	-2	0.2	€134	42	3	5	22.1	2.6
-------------------	--------	------	----	---	---	-----	----	------	-------	------	----	-----	------	----	---	---	------	-----



CH2215 ARTOIS



TZL TREZEGOAL



CH4320 LISERON



CH4321 LAPON



PI4566 SANDYMOUNT NORDIC

REPLACEMENT SALERS BULLS

Available in the tank		Pre-Order		Name	Code	Replacement Index	Rel	Stars Within	Stars Across	Calving Difficulty (%)	Rel	Gestation (days)	Dolcily (1 - 5 scale)	Daughter Calving (%)	Daughter Milk (kg)	Daughter Calving Interval (fertility)	Terminal Index	Rel	Stars Within	Stars Across	Carcass Weight (kgs)	Carcass Conformation (1-15 scale)
Available in the tank				KNOTTOWN ROY	SA4604	€267	46	5	5	2.4	55	-0.56	0.15	5.45	13	-4.0	€121	49	5	4	20.7	1.41
Pre-Order				BEGUIN	SA4059	€243	70	5	5	1.7	95	0.47	0.03	5.38	14	-4.5	€129	83	5	4	24.8	1.43
Available in the tank				HIGHFIELD ODRAN	SA2153	€206	75	5	5	2.6	98	1.22	-0.01	6.78	10	-3.1	€127	92	5	4	24.1	1.4
Pre-Order				BARON	SA4060	€164	55	4	5	3.9	73	0.46	-0.07	6.12	9	-3.4	€97	64	4	3	22.3	0.98
Pre-Order				FILO	SA4277	€150	46	3	5	2	63	2.01	0	6.78	12	-4.2	€70	52	1	2	9.4	1.14
Available in the tank				SPIDDAL PAT	SA4461	€147	50	3	5	2.6	83	1.69	-0.11	6.3	10	-3.1	€99	59	4	3	19.9	1.15
Pre-Order				CUMBRIAN JOKER POLL	S2314	€145	38	3	5	1.6	55	0.74	-0.01	5.78	3	-2.3	€110	48	5	3	17.5	1.05
Pre-Order				GERONIMOGD	SA4290	€144	41	3	5	2.7	58	1.75	-0.12	5.02	9	-1.7	€107	47	5	3	24.5	1.04
Pre-Order				HALLEY	S3006	€126	50	1	5	3.8	74	0.43	-0.04	5.47	4	-2.9	€97	63	4	3	18.4	1.05

Data: (€)€ July 19. Within breed stars are only relevant for pedigree registered cattle



SA4604 KNOTTOWN ROY



SA2153 HIGHFIELD ODRAN



SH4748 BUNCRAGGY FIRE FOX (RO Pp)



SH2396 SPRYS EXCLUSIVE J13 (Pp)



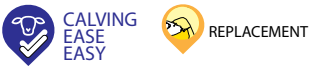
SH4209 STONEYROYD HALCYON MATRIX

REPLACEMENT SHORTHORN BULLS

Available in the tank	BUNCRAGGY FIRE FOX (RO Pp)	SH4748	€126	43	4	5	3.2	48	-0.91	0.18	8.24	9	-1.8	€80	47	5	3	21	0.74
Pre-Order	SPRYS EXCLUSIVE J13 (Pp)	SH2396	€109	42	3	5	1.3	66	-0.14	0.31	7.21	7	-2.5	€24	56	3	1	-6.5	0.29
Available in the tank	STONEYROYD HALCYON MATRIX (Pp)	SH4209	€102	43	2	4	6.5	89	-0.5	0.23	6.08	11	-1.6	€14	57	2	1	4.7	0.54
Available in the tank	COOLVIN DOMINATOR (R)	SH2181	€100	65	2	4	6.5	93	2.77	0.08	6.51	10	0.5	€23	87	3	1	10.2	0.7
Pre-Order	DIAMOND LORD BELMORE 56B ET (Pp)	SH4131	€92	34	1	4	1.8	46	1.91	0.07	7.14	10	-1.8	€23	38	3	1	-0.5	0.51

LM4351 GRENACHE

Herd Book Number: LIMFRAM001935141686
Date of Birth: 03/11/2011 MYOSTATIN STATUS (MH): +/- (2F94L)



LM2242 EDAKKYA

Herd Book Number: LIMFRAM002350854301
Date of Birth: 24/08/2009 MYOSTATIN STATUS (MH): +/- (2F94L)



Star Rating (within breed)	Economic Indexes	Euro value per progeny	Index reliability	Star Rating (across breeds)
★★★★★	REPLACEMENT	€144	48% (Average)	★★★★★
★☆☆☆☆	TERMINAL	€108	61% (High)	★★★★★

Star Rating (within breed)	Key profit traits	Index value	Trait reliability	Star Rating (across breeds)
EXPECTED PROGENY PERFORMANCE				
	Calving difficulty (% 3 & 4)	2.4%	85% (V. High)	Calving Records: 145
★☆☆☆☆	Gestation Length (days)	4.96d	91% (V. High)	★☆☆☆☆
★★★★★	Docity (1-5 scale)	-0.01 scale	61% (High)	★★★★★
★☆☆☆☆	Carcass weight (kg)	18.6kg	60% (High)	★★★★★
★☆☆☆☆	Carcass conformation (1-15 scale)	1.73 scale	54% (Average)	★★★★★

EXPECTED DAUGHTER BREEDING PERFORMANCE				
	Daughter calving difficulty (% 3 & 4)	5.57%	38% (Low)	
★★★★★	Daughter milk (kg)	7kg	47% (Average)	★★★★★
★★★★★	Daughter calving interval (days)	0.4d	37% (Low)	★★★★★

Genotype included in evaluation



EPSON
TASTEVIN
PAILLETTE
AMIRAL
DULCINEE
VOLGA

Grenache daughter, John Meehan, Clare

Star Rating (within breed)	Economic Indexes	Euro value per progeny	Index reliability	Star Rating (across breeds)
★★★★★	REPLACEMENT	€138	57% (Average)	★★★★★
★★★★★	TERMINAL	€150	78% (High)	★★★★★

Star Rating (within breed)	Key profit traits	Index value	Trait reliability	Star Rating (across breeds)
EXPECTED PROGENY PERFORMANCE				
	Calving difficulty (% 3 & 4)	5.3%	87% (V. High)	Calving Records: 198
★★★★★	Gestation Length (days)	2.87d	92% (V. High)	★★★★★
★★★★★	Docity (1-5 scale)	-0.03 scale	87% (High)	★★★★★
★★★★★	Carcass weight (kg)	32.7kg	86% (V. High)	★★★★★
★★★★★	Carcass conformation (1-15 scale)	2.29 scale	82% (V. High)	★★★★★

EXPECTED DAUGHTER BREEDING PERFORMANCE				
	Daughter calving difficulty (% 3 & 4)	4.39%	39% (Low)	
★★★★★	Daughter milk (kg)	2kg	50% (Average)	★★★★★
★★★★★	Daughter calving interval (days)	0.5d	39% (Low)	★★★★★

Genotype included in evaluation



RINTINTIN
ALEX
TENDRESSE
URGEL
BARBIE
TSARINE

Daughter

- Easy calving, a great choice for well-muscled pedigree maidens
- Progeny are well-balanced and stylish
- A big milk improver, + 7.4 kgs

- Great satisfaction with Edakkya progeny in Ireland
- Average calving, good on growth, shape, docility and maternal traits
- New bloodline for Ireland

PRE-ORDER

S3104 GOLDIES JACKPOT

Herd Book Number: LIMGBRM000GS14-1509
 Date of Birth: 11/11/2014 MYOSTATIN STATUS (MH): +/- (2F94L)



PRE-ORDER

LM4058 LODGE HAMLET

Herd Book Number: LIMGBRM542928200346
 Date of Birth: 15/03/2012 MYOSTATIN STATUS (MH): nt821/+



Star Rating (within breed)	Economic Indexes	Euro value per progeny	Index reliability	Star Rating (across breeds)
★★★★★	REPLACEMENT	€119	53% (Average)	★★★★★
★★★★★	TERMINAL	€145	65% (High)	★★★★★

Star Rating (within breed)	Key profit traits	Index value	Trait reliability	Star Rating (across breeds)
EXPECTED PROGENY PERFORMANCE				
	Calving difficulty (% 3 & 4)	9%	91% (V.High)	Calving Records: 350
★☆☆☆☆	Gestation Length (days)	5.05d	93% (V.High)	★☆☆☆☆
★★★★★	Docility (1-5 scale)	0.03 scale	82% (V.High)	★★★★★
★★★★★	Carcass weight (kg)	37.5kg	64% (High)	★★★★★
★★★★★	Carcass conformation (1-15 scale)	2.62 scale	53% (Average)	★★★★★

EXPECTED DAUGHTER BREEDING PERFORMANCE				
	Daughter calving difficulty (% 3 & 4)	3.33%	45% (Average)	
★★★★★	Daughter milk (kg)	7kg	47% (Average)	★★★★★
★★☆☆☆	Daughter calving interval (days)	2.5d	40% (Average)	★★☆☆☆

Genotype included in evaluation



Son, Glenford herd

WILODGE CERBERUS
AMPERTAINE FOREMAN
 AMPERTAINE BATHSHEBA
 SARKLEY RAGTIME
GOLDIES VITALITY
 GOLDIES TIFFENY

Star Rating (within breed)	Economic Indexes	Euro value per progeny	Index reliability	Star Rating (across breeds)
★★★★★	REPLACEMENT	€90	70% (High)	★★★★★
★★★★★	TERMINAL	€151	87% (V.High)	★★★★★

Star Rating (within breed)	Key profit traits	Index value	Trait reliability	Star Rating (across breeds)
EXPECTED PROGENY PERFORMANCE				
	Calving difficulty (% 3 & 4)	4.5%	97% (V.High)	Calving Records: 1253
★★★★★	Gestation Length (days)	3.12d	97% (V.High)	★★★★★
★★★★★	Docility (1-5 scale)	0.02 scale	95% (V.High)	★★★★★
★★★★★	Carcass weight (kg)	26.2kg	94% (V.High)	★★★★★
★★★★★	Carcass conformation (1-15 scale)	2.77 scale	92% (V.High)	★★★★★

EXPECTED DAUGHTER BREEDING PERFORMANCE				
	Daughter calving difficulty (% 3 & 4)	4.96%	60% (High)	
★☆☆☆☆	Daughter milk (kg)	-5kg	68% (High)	★☆☆☆☆
★★★★★	Daughter calving interval (days)	1.5d	46% (Average)	★★★★★

Genotype included in evaluation



Meenross Prospect, 1st prize winner Tullamore 2019

JACOT
5331 SAPHIR
 ISSUE
 BROADMEADOWS CAN-NON
LODGE VIOLET
 MIDDLEDALE TAN-GERINE

- Jackpot progeny have massive performance
- Top 2% of the Limousin breed for Carcass Weight and Carcass Conformation
- A big docility improver; top 8% of the breed
- Use on mature cows only

- A consistent producer of show quality animals
- Progeny are correct with exceptional muscle development both on the back and hindquarter
- Suitable for second calvers. progeny are small at birth and muscle up quickly

S3253 KARLOS PP

Herd Book Number: LIMDEUM000946557637
Date of Birth: 15/11/2011 MYOSTATIN STATUS (MH): +/-



VMO VOIMO

Herd Book Number: CHAFRAM005703556364
Date of Birth: 15/10/2004 MYOSTATIN STATUS (MH): +/-



Source ICBF July 19

Star Rating (within breed)	Economic Indexes	Euro value per progeny	Index reliability	Star Rating (across breeds)
★★★★★	REPLACEMENT	€100	32% (Low)	★★★★★
★☆☆☆☆	TERMINAL	€99	33% (Low)	★★★★★

Source ICBF July 19

Star Rating (within breed)	Economic Indexes	Euro value per progeny	Index reliability	Star Rating (across breeds)
★★★★★	REPLACEMENT	€109	71% (High)	★★★★★
★★★★★	TERMINAL	€121	84% (High)	★★★★★

Star Rating (within breed)	Key profit traits	Index value	Trait reliability	Star Rating (across breeds)
EXPECTED PROGENY PERFORMANCE				
	Calving difficulty (% 3 & 4)	3.1%	39% (Low)	Calving Records: --
★★★★★	Gestation Length (days)	2.29d	40% (Average)	★★★★★
★★★★★	Docility (1-5 scale)	0.04 scale	31% (Low)	★★★★★
★☆☆☆☆	Carcass weight (kg)	13kg	32% (Low)	★★★★★
★☆☆☆☆	Carcass conformation (1-15 scale)	1.47 scale	31% (Low)	★★★★★
EXPECTED DAUGHTER BREEDING PERFORMANCE				
	Daughter calving difficulty (% 3 & 4)	5.72%	31% (Low)	
★★★★★	Daughter milk (kg)	1kg	32% (Low)	★★★★★
★★★★★	Daughter calving interval (days)	-0.6d	31% (Low)	★★★★★

Star Rating (within breed)	Key profit traits	Index value	Trait reliability	Star Rating (across breeds)
EXPECTED PROGENY PERFORMANCE				
	Calving difficulty (% 3 & 4)	6.3%	93% (V. High)	Calving Records: 376
★★★★★	Gestation Length (days)	1.64d	96% (V. High)	★★★★★
★★★★★	Docility (1-5 scale)	0.08 scale	86% (V. High)	★★★★★
★★★★★	Carcass weight (kg)	31.3kg	91% (V. High)	★★★★★
★★★★★	Carcass conformation (1-15 scale)	1.76 scale	90% (V. High)	★★★★★
EXPECTED DAUGHTER BREEDING PERFORMANCE				
	Daughter calving difficulty (% 3 & 4)	3.4%	61% (High)	
★★★★★	Daughter milk (kg)	4kg	81% (V. High)	★★★★★
★★★★★	Daughter calving interval (days)	-0.8d	48% (Average)	★★★★★

Genotype included in evaluation



- KANA PP
- KANT PP**
- IRLANDE
- KERN PP
- LINA P**
- LINSE PP

Commercial progeny

Genotype included in evaluation



- EXCLUSIF
- NATUR**
- LUCILE
- DIEGO
- OVATION**
- LOUISE

Daughter

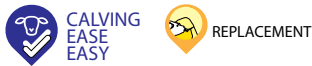
- Excellent quality homozygous polled bull, all the progeny will be polled
- Progeny are consistently excellent quality with plenty of shape
- Excellent docility

- Proven to be excellent on calving ease, calving ability and milk
- Suitable for use on pedigree maidens
- One of the best charolais bulls available for milk, +4.3kgs at very high reliability
-

PRE-ORDER

CH2215 ARTOIS

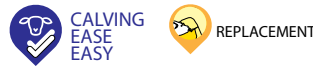
Herd Book Number: **CHAFRAM005810006623**
 Date of Birth: 06/12/2005 **MYOSTATIN STATUS (MH): +/-**



PRE-ORDER

CH2217 CASTOR

Herd Book Number: **CHAFRAM006146791641**
 Date of Birth: 28/10/2007 **MYOSTATIN STATUS (MH): +/-**



Star Rating (within breed)	Economic Indexes	Euro value per progeny	Index reliability	Star Rating (across breeds)
★★★★★	REPLACEMENT	€131	57% (Average)	★★★★★
★★★★★	TERMINAL	€164	70% (High)	★★★★★

Star Rating (within breed)	Key profit traits	Index value	Trait reliability	Star Rating (across breeds)
EXPECTED PROGENY PERFORMANCE				
	Calving difficulty (% 3 & 4)	4.7%	79% (High)	Calving Records: 63
★★★★★	Gestation Length (days)	2.67d	84% (V. High)	★★★★★
★★★★★	Docility (1-5 scale)	0.23 scale	72% (High)	★★★★★
★★★★★	Carcass weight (kg)	43.9kg	77% (High)	★★★★★
★☆☆☆☆	Carcass conformation (1-15 scale)	1.61 scale	76% (High)	★★★★★

EXPECTED DAUGHTER BREEDING PERFORMANCE				
	Daughter calving difficulty (% 3 & 4)	3.4%	48% (Average)	
★★★★★	Daughter milk (kg)	-1kg	73% (High)	★☆☆☆☆
★★☆☆☆	Daughter calving interval (days)	-0.3d	37% (Low)	★★★★★

Genotype included in evaluation



Son

JUMPER
TERNOIS
 GAMINE
 JACQUART
PIN UP
 HALEINE

Star Rating (within breed)	Economic Indexes	Euro value per progeny	Index reliability	Star Rating (across breeds)
★★★★★	REPLACEMENT	€84	61% (High)	★★★★★
★★☆☆☆	TERMINAL	€117	76% (High)	★★★★★

Star Rating (within breed)	Key profit traits	Index value	Trait reliability	Star Rating (across breeds)
EXPECTED PROGENY PERFORMANCE				
	Calving difficulty (% 3 & 4)	5.4%	86% (V. High)	Calving Records: 143
★★★★★	Gestation Length (days)	1.25d	86% (V. High)	★★★★★
★★☆☆☆	Docility (1-5 scale)	-0.01 scale	74% (High)	★★★★★
★★☆☆☆	Carcass weight (kg)	31.5kg	83% (V. High)	★★★★★
★☆☆☆☆	Carcass conformation (1-15 scale)	1.51 scale	81% (V. High)	★★★★★

EXPECTED DAUGHTER BREEDING PERFORMANCE				
	Daughter calving difficulty (% 3 & 4)	3.4%	52% (Average)	
★★★★★	Daughter milk (kg)	2kg	74% (High)	★★★★★
★★★★★	Daughter calving interval (days)	-2.7d	41% (Average)	★★★★★

Genotype included in evaluation



Son, Liseron CH4320

PICADOR
SESAME
 NEFLE
 MAGENTA
TRAGEDIE
 OPA

- Top 1% of the CH breed on Replacement Index and top 3% on Terminal Index
- Use to improve size and length without losing the calving ease
- Calving ease, calving ability and milk in one package

- An easy calving sire, suitable for use on pedigree maidens
- His females are excellent, functional, milky and fertile
- A well-balanced, all-round bull

S2330 COONAMBLE ELEVATOR E1

Herd Book Number: **AANAUSM00000WDCE11**
 Date of Birth: 06/03/2009 **MYOSTATIN STATUS (MH): +/-**



SA4059 BEGUIN

Herd Book Number: **SALFRAM001526045011**
 Date of Birth: 10/01/2006 **MYOSTATIN STATUS (MH): +/-**



Daughter



Star Rating (within breed)	Economic Indexes	Euro value per progeny	Index reliability	Star Rating (across breeds)
★★★★★	REPLACEMENT	€128	45% (Average)	★★★★★
★★★★★	TERMINAL	€107	52% (Average)	★★★★★

Star Rating (within breed)	Key profit traits	Index value	Trait reliability	Star Rating (across breeds)
EXPECTED PROGENY PERFORMANCE				
	Calving difficulty (% 3 & 4)	2.5%	61% (High)	Calving Records: 23
★★★★★	Gestation Length (days)	-2.06d	68% (V. High)	★★★★★
★★★★★	Docility (1-5 scale)	0.01 scale	47% (Average)	★★★★★
★★★★★	Carcass weight (kg)	20.4kg	59% (Average)	★★★★★
★★★★★	Carcass conformation (1-15 scale)	0.75 scale	38% (Low)	★★★★★

EXPECTED DAUGHTER BREEDING PERFORMANCE				
	Daughter calving difficulty (% 3 & 4)	6.12%	32% (Low)	
★★★★★	Daughter milk (kg)	8kg	53% (Average)	★★★★★
★☆☆☆☆	Daughter calving interval (days)	-2.6d	31% (Low)	★★★★★

Genotype included in evaluation



Son, Carrigroe Nationwide

— B S S LIMITED DESIGN
COONAMBLE Z3 (AI (ET))
 — IMRAN ROSEBUD U17
 — KOOJAN HILLS XCELL W29 (AI)
BANGADANG B31
 — BANGADANG WIL-COOLA Y1 (AI)

Star Rating (within breed)	Economic Indexes	Euro value per progeny	Index reliability	Star Rating (across breeds)
★★★★★	REPLACEMENT	€243	70% (High)	★★★★★
★★★★★	TERMINAL	€129	83% (V. High)	★★★★★

Star Rating (within breed)	Key profit traits	Index value	Trait reliability	Star Rating (across breeds)
EXPECTED PROGENY PERFORMANCE				
	Calving difficulty (% 3 & 4)	1.7%	95% (V. High)	Calving Records: 636
★★★★★	Gestation Length (days)	0.47d	98% (V. High)	★★★★★
★★★★★	Docility (1-5 scale)	0.03 scale	94% (V. High)	★★★★★
★★★★★	Carcass weight (kg)	24.8kg	89% (V. High)	★★★★★
★★★★★	Carcass conformation (1-15 scale)	1.43 scale	86% (V. High)	★★★★★

EXPECTED DAUGHTER BREEDING PERFORMANCE				
	Daughter calving difficulty (% 3 & 4)	5.38%	56% (Average)	
★★★★★	Daughter milk (kg)	14kg	77% (High)	★★★★★
★★★★★	Daughter calving interval (days)	-4.5d	45% (Average)	★★★★★

Genotype included in evaluation



Son, Knottown Roy

— OUDINOT
UNION
 — PICARDIE
 — MYSTERE
SARLETTE
 — LILI

- A high performance sire from Australia
- Progeny are exceptionally correct; great legs and feet and topline and extremely docile
- He ranks high on the Australian system for weight gain, feed efficiency, docility and soundness

- No. 2 bull available on Replacement Index, his son Knottown Roy is the No. 1
- What a dream bull, Calving Ease, Milk, Fertility, Docility and excellent terminal traits also
- Use on maidens or cows to breed exceptional brood cows without compromising on terminal traits

VASECTOMISED BULL



Vasectomised bulls fitted with chin balls are an excellent method of heat detection for both heifers and cows. The chin ball is as important as the bull as heats will be missed due to the bull mating the cow and not remaining with her. This happens especially in mature bulls as they mate and walk away. They do less courting than young bulls. Ensure the bull is vasectomised. Your Vet can check the ejaculate to ensure it is free of semen.

1



2



3



4



5



6



1. A well grown vasectomized bull is invaluable for the breeding season. This reduces the likelihood of injury. He will work 24/7.
2. The chin ball shown is the preferred one costing €150. Pad the neck and nose strap with 4" Elastoplast or Vet wrap, or a section of a worn yellow volume washer hose works well. It prevents the strap cutting the bull. Ring the bull for convenience when refilling the chin ball. One fill should suffice for 10-15 heats.
3. Ensure the chinball is snugly fitted to the bull. It is leather so will need adjusting. Initially fit the chinball for 1 week without paint to familiarise the bull with it.
4. Only use chinball paint in the chinball. It is a heavy oil base and needs to be well shaken before topping up. Red or blue paint is best in wet weather and yellow or green is best in dry weather. Cost is €60 for 5 litres.
5. Putting the drum of chinball paint into a bucket of warm water makes it much easier to mix. Avoid overfilling the chinball and ensure the plug is secured correctly.
6. The bull marks the cows on the back when he is serving them. Position yourself to see the marks on the backs of the cows. A young bull will mark cows a lot on the side when he is courting her, older bulls much less. It is the marks on top of the back that are key.

Top Tips

1. Reduce injuries by training a young bull with maiden heifers first. Secondly avoid overworking a bull. He is not required until heats are 2 or less per day.
2. Remove the vasectomised bull when a synchronised group are due in heat. This reduces the risk of him getting injured and ensures we have him when required.
3. Young bulls may be courting cows 24 hours before they are in standing heat. It is the marks on top of the back that are key. Not the ones on the side. The marks on the side alerts you to the fact that a cow may be coming on heat 'courting marks'. Take care with these to avoid insemination prior to 24 hours prior to standing heat.
4. Keep the chin ball topped up.

HEALTH & SAFETY

Exercise caution when dealing with all bulls including those that are vasectomised.



PAINT STICKS/CRAYONS

Paint sticks or crayons are very easy and convenient to use. They rub off easily after mounting and they work well with cattle indoors and outdoors.

1. *Paint sticks or Crayons are available in the four colours pictured. They come in boxes of 12 costing €35 per box.*
2. *Just comb or brush the rump area, to remove loose hair and dirt. It is not necessary to clip the hair; this is clearly an advantage if you wish to use them in conjunction with scratch cards.*
3. *A skin can form over the tip of the paint sticks when they dry. Rub the paint stick on a concrete surface to remove it.*
4. *Apply the crayons in a 9" narrow strip. In heifers, come further down the tail head with the paint stick than you would in cows. Heifers do not go as forward on the rump on the standing animal with their brisket as cows do.*
5. *If you are finding heat detection difficult, apply both scratch cards and crayons to the animals. Put on the scratch card first and then apply the paint stick.*



All you need in A.I. Services

- for
- AI Technician Service**
- DIY Equipment**
- Liquid Nitrogen Service**
- DIY Training**
- Genetic Advice & Support**



The most effective way to maintain your DIY container

FOR FURTHER INFORMATION

022 43228

for AI Calls
Dairygold Area:

1850 500 321

SWS Area:

023 8832828

Kerry Area:

1890 28 1000

SCRATCH CARDS



Scratch cards are an excellent method of heat detection in both cows and heifers when cattle are outdoors and rumps are clean. The scratch cards shown here in the picture 'Estrus Detect' are superior to the previous self-adhesive cards, as they stay much better and are not scratched as easily and are easier to read.



1. *Apply scratch cards to dry hair on a dry day otherwise the glue will not adhere. Watch the forecast. Cost of a roll of 100 cards is €55 and a can of glue is €20 resulting in a cost of €0.75 per card applied. Wear gloves to avoid glue on hands.*
2. *Do not clip hair. Glue needs hair for adherence. Just comb or brush to remove loose hair and dirt. Loose hair is shed easily in the spring and will take the scratch card with it when shed.*
3. *Layout the number of cards corresponding to the number of animals in the crush in a clean dry non-windy and dust free area and spray with glue. Dust sticking to the card reduces the adhesiveness of the glue. Ensure to cover the entire card to the edges.*
4. *Spray cleaned brushed rump area in an east to west direction where the card is to be applied, across the back bone.*
5. *Patience required now until the first card gets tacky. Wait When tacky the card will stick to your glove and will not fall to the ground.*
6. *Apply the card to the sprayed area east to west. Secure in place by applying gentle pressure especially at the edge. Card is now properly applied!*
7. *Animal in heat, grey rubbed off and red exposed. Can also get green and yellow cards.*
8. *Alot of mounting, grey and red rubbed off, white exposed and edges curled from mounting.*
9. *Sometimes with lighter heifers the entire card may not have gone red, however the center strip will be red.*
10. *As animals are AI'd, cut the hair on the tails. Long tails are those yet to be inseminated.*

Top Tips

1. Watch the forecast for a perfectly dry day to apply the cards.
2. Patience- Wait till the 1st card is tacky before application. It will stick to your glove when tacky.
3. Reapply the cards the day after being inseminated.

MAXIMISE SUCCESS OF AI IN SUCKLER COWS

To achieve targets

1. Cow must have an easy calving.

Match your cows to sires that they are capable of calving easily. Difficult calvings is one of the biggest causes of cows being slow to return to service. Heifers that are calving at 2 years need an exceptionally easy calving sire.



2. Break the strong maternal offspring bonding

Cows must cycle within 55 days of calving to achieve one calf per cow per year.

This is a superb way of getting Autumn calvers and 1st calvers cycling. The easiest way to do this is to separate the calves from the cows from day 30.

After calving, only allow access for twice daily suckling. For the autumn calving cows indoors, a door in the creep area to an outside paddock can be opened to allow the calves out to grass. The time to first heat will be reduced by 4 weeks. 80% of cows will exhibit a fertile heat by day 45, however, about 10% will not respond. These are often the cows in poor bcs.

In addition to the cows cycling sooner, the calves are out most of the time resulting in reduced disease issues, less bedding used and heavier calves at weaning. A winner all around.

3. Nutrition and BCS at calving

The higher the bcs at calving the quicker the cow will resume cycling post calving. A bcs of 2.5+ is ideal.

Extra feeding after calving will not compensate for poor bcs at calving. Cows on poor bcs 1.75 will not cycle until 71+ days after calving while cows in good bcs 3.0+ will be cycling by day 55. Avoid fluctuations in feed supply around breeding. Keep cows on a rising plane of nutrition.

Extra feeding after calving will not compensate for poor bcs at calving. Both are necessary. Mineral supplementation is necessary to supplement the silage ingested.

4. Health

Achieving high conception rates

- Discuss a herd health strategy with your Vet
- Ensure cows receive all vaccinations 3 weeks prior to breeding.

- Ensure cows are dosed for parasites if necessary - Fluke & Worms prior to breeding.

5. Avoid stress around the time of breeding

- Ensure cows are in a socially stable group. Avoid mixing cows from different groups during the breeding season especially 1st calved heifers.

6. Requirements for cows to express normal heat activity

- Adequate space is necessary to allow mounting for heat detection. Increased stocking density indoors reduces heat expression and more false heats will occur.
- Mounting activity and duration of mounting is reduced where under foot conditions are slippery and when cattle are on concrete.

7. Timing of insemination to maximise conception rates

The best time to inseminate is when animals are in standing heat and up to 12 hours after the end of standing heat.

- Avoid inseminating cows that are more than 12 hours after the end of standing heat.
- Heat detection aids are crucial for accurate and efficient heat detection.
- Once a day insemination works well. For example, if the technician is coming into your yard each day at 12 noon, inseminate all the cows you have seen up to 12 noon that day.
- Speak to your technician and discuss your routine.
- When synchronising cows and heifers, plan the time of insemination in advance with your technician and strictly adhere to the programme.
- Insemination is a job requiring precision to maximise conception rate.
- Ensure adequate facilities are available and help the technician especially where more than one animal is to be inseminated.

8. Biosecurity - it's everybody's responsibility!



MAXIMISE SUCCESS OF AI IN MAIDEN HEIFERS

1. Ensure that heifers meet the recommended target weights at breeding.
 - This ensures that the majority of heifers are cycling
 - This ensures that heifers are well developed at calving and will calve easily.
 - This ensures that heifers are more likely to go in-calf within 60-80 days after their 1st calving.
2. Ensure that heifers are on a rising plane of nutrition (gaining weight) 3 weeks before and during the breeding season.
3. Ensure that heifers have received all of their vaccines 3 weeks prior to breeding.
4. Ensure that heifers have been dosed for parasites- Fluke & Worms prior to breeding.
5. Ensure that heifers are in a socially stable group; avoid mixing heifers from different groups during the breeding season.
6. Ensure that heifers have adequate space to allow mounting for heat detection. Increased stocking density indoors reduces heat expression and more false heats will occur.
7. Ensure that heifers have suitable under-foot conditions; mounting activity and duration of mounting is reduced when under-foot conditions are slippery and when cattle are on concrete.



Recommended target weight at 14 months of age		
Breed Target	Target (KG)	ADG birth to 14 months (Kg/day)
Angus X	370	0.77
Hereford X	370	0.77
Simmental X	400	0.85
Limousin X	420	0.88
Charolais X	430	0.9

BENEFITS OF SYNCHRONISATION

1. All animal inseminated on the one day without any heat detection.
2. Repeats will occur over a 2-4 day period, making heat detection much easier as more animals are on heat at the one time. You will know the expected days of heats in advance.
3. Cows calved 35 days and not cycling when synchronised will resume cyclicity, provided nutrition and management is good. This will increase the 3 and 6 week calving rate.
4. A compact group of cows/heifers can be presented for scanning and the empty cows/heifers can be synchronised again or marked for heat detection.
5. A compact calf crop makes management from calving to weaning easier and facilitates sale.
6. Compacting calving allows animals to be grouped together e.g. all 1st calvers can be grouped together for extra feeding.
7. Even though you will inseminate animals in one day, they will calve over a two-week period.



Note: When heats are due in a group of cows indoors, it is best to lock the calves away from the cows in the creep area to avoid them getting injured. It is also prudent to take away the vasectomised bull at this time of maximum activity to avoid him getting injured.

BEEF COWS - SYNCHRONISATION FOR COWS FIXED TIMED AI AT A PREDETERMINED TIME. NO HEAT DETECTION. 3 HANDLINGS IN THE CRUSH			
Monday 1 st	Day 0	AM	Insert PRID or CIDR* and inject GnRH
Monday 8 th	Day 7	AM	Inject PG & eCG & Remove PRID/ CIDR*
Thursday 11 th	Day 10	AM to noon	AI all cows and inject GnRH (72 hours after PG injection)

- This is a superb programme for herds that wish to tighten and advance the mean calving date & maximises pregnancy rates as 100% submission is achieved.
- Superb to bring forward late calvers, however ensure cows are calved 35 days, have a BCS of 2.75+ and Intakes are maximised.

BEEF HEIFERS - COST EFFECTIVE REGIME & HIGH CONCEPTION RATES - AI AT OBSERVED HEAT. 12 DAY HEAT DETECTION		
Monday 1 st	Day 0 - Day 7	AI on observed heat - should have 1/3 detected at end of week.
Monday 8 th	Day 8	PG to heifers not detected in heat. Only inject if 1/3 bred already - otherwise investigate
Wednesday 10 th / Thursday 11 th	Day 10 - Day 11	AI on detected heat. Majority on 48-72 hours post PG injection

- If 1/3 are not bred in the 1st week avoid injecting with PG as the heifers are not cycling- due to their weight, plane of nutrition, pregnancy or heat detection.
- For those that are not observed- reinject PG 11 days after the 1st injection.
- If releasing a bull after AI, watch carefully for the repeats to ensure he is not overworked in those 2-4 days- prudent to use AI for those 2-4 days.

BEEF HEIFERS - SYNCHRONISATION - FIXED TIMED AI AT A PREDETERMINED TIME. NO HEAT DETECTION. 4 HANDLINGS IN THE CRUSH			
Monday 1 st	Day 0	AM or PM	Insert PRID or CIDR* & Inject GnRH
Saturday 6 th	Day 5	AM or PM	Inject PG
Sunday 7 th	Day 6	AM or PM	Inject PG and remove PRID or CIDR*
Tuesday 9 th	Day 8	AM or PM	Inject GnRH and fixed timed AI (72 hours after PG injection)

- Decide at the beginning of the protocol whether it is AM or PM that is convenient for you and remain with it. Talk to your AI technician before commencing.
- This regime allows you to inseminate all heifers with 4 handlings and all are AI'd at a fixed time- No heat detection until the repeats.
- AI'ing the repeats ensures that the bulls are not overworked, avoids bulls getting injured and ensures we will have them when we need them.

Note

- PG Prostaglandin- *Estrumate, *Lutalyse, *Enzaprost.
- GnRH- *Receptal, *Ovarelin.
- ecG- *Folligon PMSG, *Synchrostim.
- *POM prescription only medicines and under veterinary control.
- Inadvertent administration of prostaglandin to a cow/ heifer during the first 3-4 months of pregnancy will cause abortion.

OUR TEAM

Area Managers. *For breeding advice & technician service queries.*



Michael Clohessy
086 6054723
Limerick



Jerome Leen
087 2529895
Kerry, North Cork



Eustace Burke
086 0274558
South Cork



Joe O'Flynn
086 4030646
*North Cork,
Cork City North*



Declan Keating
086 8164024
West Cork



Brendan Scully
086 4126727
*East Cork,
West Waterford,*



Enda O'Gorman
086 8352700
Clare & Galway

Breeding Advisors.



Joe Tobin
086 8125441
*East Cork,
West Waterford,
Tipperary*



James Egan
086 3650665
North Kerry



Ben Slee
087 2902031
Tipperary



Kevin Dillon
086 2583513
West Cork



Tom Tobin
087 2758061
Cork City South



A.I. Calls

Dairygold 1850 500 321
Bandon 023 883 2828
Kerry/Clare & Galway 1890 28 1000

Main Office

Balyvorisheen, Mallow, Co. Cork
t 022 43228 e info@munsterbovine.ie
w www.munsterbovine.ie

