



MUNSTER BOVINE

Collectively Improving Farm Life



**Production & Type
2023**

Index

FR7575	PREHEN RINGROSE	6
FR7923	(IG)TOBERMARTIN FRANCIS	7
FR6139	(IG)LISDUFF PERCEPTION	8
FR8307	WINSTAR GRAZIANO-ET	9
FR7533	BOMAZ EPISODE-ET	10
FR7824	PROGENESIS NAPAVALLEY	11
FR7910	(IG)BALLYELLY CHILLI	12
FR7530	BOMAZ VADER-ET	13
FR7158	(IG)DOONMANAGH CHOPPER	14
FR6445	KOEPEON RAPTOR	15
FR4689	ABS JERONIMO-P-ET	16
S3579	PROGENESIS WIMBLEDON	17
FR7812	PROGENESIS BLACKTIE	18
FR7905	(IG)BUNACLOY ALIBI	19
FR4187	WESTCOAST PERSEUS	20
FR8697	WESTCOAST MIDMARCH	21
FR6571	DEVO 15551 SUBLIME-ET	24
	PROGENESIS PROTOCOL	25
FR7848	DELTA FOND PP-RED	26
S3261	K+L LZ CONAN PP-RED	27
FR8343	KOEPEON OH RYDER RED	28
FR7566	3STAR OH RANGER RED-ET	29
FR6826	SHG RAINSTORM RED (DNK)	30
S3806	HOOGERHORST DG OH RUBELS-RED	31
FR8694	COOKIECUTTER HOLYSMOKES-ET	32
S3537	STANTONS ALLIGATOR-ET	32
	KINGS-RANSOM DROPBOX-ET	33
S1488	VAL-BISSON DOORMAN	33
S3619	CLAYNOOK BAROLO SG	34
FR4419	WALNUTLAWN SIDEKICK	34
	COMESTAR LEMAGIC	35
FR4734	OH-RIVER-SYC CRUSHABULL[1]JET	35
	BEEF SIRES FOR THE DAIRY HERD	36



Milk Solids: Indicates superior sires producing more than 40 kg of Milk Solids (Fat + Protein)



Health Plus: Identifies superior sires with a high Health Sub-Index value greater than €20. The Health Sub-Index incorporates SCC, Mastitis and Lameness.



Fertility Improver: Represents superior sires that are in the Top 1% (i.e., €140 +) for Fertility Sub Index.



Component Specialist: Indicates superior sires that are achieving exceptional fat and protein percentages.



High Type: Identifies sires excelling in conformation traits.



Easy Calving: The superior sires that are most suitable for heifers due to their low heifer calving difficulty (less than 6%) and high reliability (greater than 85%).



A2: Represents the sire who are producing the Beta Casein type: A2/A2



Robot Ready: The superior sires with strong central ligament udder support and teat placement close to the centre of the udder as well as average teat length.

DISCLAIMER

Every reasonable effort has been made to ensure that the information provided in this publication is reasonably comprehensive, accurate and clear.

Trait Ranking

Top Prod SI	Page	Code	Name	Milk SI
	32		COOKIECUTTER HOLYSMOKES-ET	158
	9	FR8307	WINSTAR GRAZIANO-ET	155
	13	FR7530	BOMAZ VADER-ET	152
		FR6664	PROGENESIS REG	150
6	FR7575	PREHEN RINGROSE	145	

Top EBI	Page	CODE	Name of Bull	EBI SI
	6	FR7575	PREHEN RINGROSE	304
	7	FR7923	(IG)TOBERMARTIN FRANCIS	298
	9	FR8307	WINSTAR GRAZIANO-ET	289
	8	FR6139	(IG)LISDUFF PERCEPTION	289
10	FR7533	BOMAZ EPISODE-ET	288	

Top Fert SI	Page	Code	Name	Fert SI
		FR4688	DE-SU 14118 REGINALD-ET	140
	8	FR6139	(IG)LISDUFF PERCEPTION	130
	12	FR7910	(IG)BALLYELLY CHILLI	101
	7	FR7923	(IG)TOBERMARTIN FRANCIS	100
10	FR7533	BOMAZ EPISODE-ET	90	

Top Health SI	Page	CODE	Name of Bull	Health SI
	6	FR7575	PREHEN RINGROSE	37
		FR4688	DE-SU 14118 REGINALD-ET	35
		S3134	STANTONS APPLICABLE	31
	24	FR6571	DENOVO 15551 SUBLIME-ET	31
32		COOKIECUTTER HOLYSMOKES-ET	31	

Top Solids Kg	Page	CODE	Name of Bull	Solids Kg
	9	FR8307	WINSTAR GRAZIANO-ET	58
	32		COOKIECUTTER HOLYSMOKES-ET	58
		S3528	WESTCOAST ALCOVE	57
	13	FR7530	BOMAZ VADER-ET	55
	FR4751	PROGENESIS MOOSE	53	

Top Type	Pg No	CODE	Name of Bull	Type
	35	FR4734	OH-RIVER-SYC CRUSHABULL-ET	4.29
	34	S3619	CLAYNOOK BAROLO SG	4.11
			KINGS-RANSOM DROPBOX-ET	4.1
		S3134	STANTONS APPLICABLE	4
	FR8343	KOEPEON OH RYDER RED	3.96	

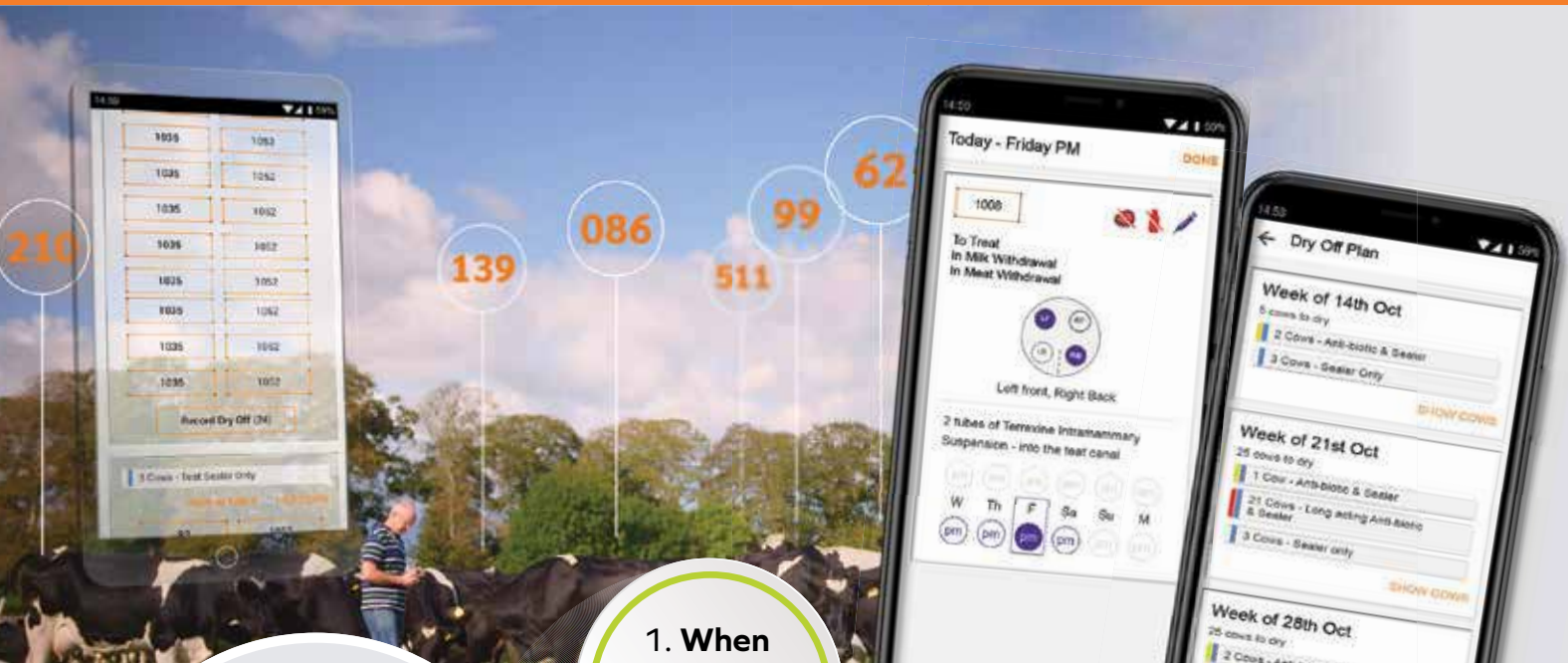
Top Udder	Pg No	CODE	Name of Bull	Udder
	33		KINGS-RANSOM DROPBOX-ET	4.23
	34	S3619	CLAYNOOK BAROLO SG	4.08
	28	FR8343	KOEPEON OH RYDER RED	4.02
	35	FR4734	OH-RIVER-SYC CRUSHABULL-ET	4.02
	S3390	SANDY-VALLEY CHALLENGER-ET	3.49	

Top Feet & Legs	Pg No	CODE	Name of Bull	F&L
		S3134	STANTONS APPLICABLE	3.44
		FR7806	WESTCOAST ROCKNROLL	3.38
		FR4688	DE-SU 14118 REGINALD-ET	2.82
	34	FR4419	WALNUTLAWN SIDEKICK	2.72
24	FR6571	DENOVO 15551 SUBLIME-ET	2.47	

Top TB Resistance	Pg No	CODE	Name of Bull
		S3655	PROGENESIS METALLICA
	17	S3579	PROGENESIS WIMBLEDON
	21		WESTCOAST MIDMARCH
	13	FR7530	BOMAZ VADER-ET
12	FR7910	(IG)BALLYELLY CHILLI	

Robot Ready	Pg No	CODE	Name of Bull
	9	FR8307	WINSTAR GRAZIANO-ET
		FR4688	DE-SU 14118 REGINALD-ET
	10	FR7533	BOMAZ EPISODE-ET
	7	FR7923	(IG)TOBERMARTIN FRANCIS
12	FR7910	(IG)BALLYELLY CHILLI	


Use FarmOps for Dry Off



Two big questions that need to be answered for each cow in the herd.

1. When should she be dried off

2. What treatment should she receive?

 FarmOps simplifies these dry off decisions

Download your Free 90 Day Trial Today!



Powered by:

 **MUNSTER BOVINE**
Collectively Improving Farm Life

AI Technician Service

THE CORNERSTONE OF OUR BUSINESS



Pride in our team of AI technicians.

As a group, they deliver the highest standards of AI service in the country. This is achieved through technical excellence in semen handling and insemination coupled with the ability to cope with the intensity of the Irish breeding season. Each technician's commitment to providing the best possible service to herd owners is unrivalled. Munster Bovine AI technicians consistently achieve high conception rates which for you the herd owner, drives a **high 6 week calving rate and a low empty rate.**

THE BEST TECHNOLOGY

Each AI technician is equipped with the best equipment to optimise semen handling and insemination. All technicians also use the latest handheld technology to ensure accuracy of work and a seamless delivery of service.

THE POWER OF THE TEAM

With over 160 technicians covering the Munster area, the team has the scope to deliver for all our customers at peak when over 12000 inseminations per day are completed. As well as covering each other, they can also team up for large sync jobs when required.

THE BEST SUPPORT

A huge background effort goes in to supporting the technician service especially during peak. From the lab team in Mallow to our courier team that deliver liquid Nitrogen and semen to the 25 depots around the region, a huge logistical effort takes place during peak.



THE BEST BACKUP

Our technicians have the full support of their area managers, the veterinary team, the laboratory team and breeding advisors and are encouraged to seek advice for any queries they or the herdowner might have.

TRAINING AND MONITORING

Our technicians receive continuous training to ensure they are fully up to date with genetics and any new technical developments. All Munster Bovine technicians are continuously monitored to ensure they are achieving the best possible performance and operating to the highest standards.



AI Calls
1800 251 020



AI Technician Academy

DESIGNED TO DELIVER PERFORMANCE

Our technician academy is the envy of the industry. Every technician undergoes an unrivalled training regime before they qualify to go on the road.



**YEAR
1**

Following a recruitment process, interview and screening, **trainees are selected.**

Completion of DIY training - 2 full theory days and 3 practical days.

Intensive practical training - Twice weekly for 10-12 weeks

Practical assessment - Trainees with the ability to become excellent technicians are retained in the training programme.

Continued intensive practical training - Increased focus on semen handling, hygiene, and efficiency.

Get a provisional **AI technician licence.**

Each trainee **set up by ICBF with a handheld** for the upcoming breeding season which allows monitoring.

**YEAR
2**

Trainee teams up with an experienced technician for the main breeding season.

The trainee will complete a **sufficient no of inseminations** spread over a large number of herds.

All trainee inseminations are **recorded on their own handheld** which will allow performance to be monitored.

Preparation for and **completion of DAFM exams** to become fully licenced AI technician.

**YEAR
3**

Following a review of year 2 performance and further training, **the trainee is deemed ready to go on the road as a fully trained Munster Bovine Technician** and is supplied with all the necessary equipment.

Their **workload is managed carefully** for the first year to ensure they can cope comfortably and achieve the best results.

Continuous monitoring and training.

The Technician training academy is the responsibility of our Technical Manager and Veterinary surgeon Dennis Howard. Experienced Munster Bovine technicians are also involved in every practical session at our training facility and provide invaluable tuition and guidance to our trainees.

AI Calls
1800 251 020



FR7575 PREHEN RINGROSE

PED

Date of Birth:
21/09/2019

HO 100%

Beta Casein:
A1/A2

aAa

Genetic Defect
HH6C

Herd Book Number:
HOLGBRM954082148155

Prehen Ringrose



SCAN QR CODE
FOR MOST
RECENT PROOF



EBI OCT. 22 SOURCE ICBF		REL
EBI	304	55%
Prod. SI	145	73%
Fert. SI	66	48%
Calv. SI	61	48%
Beef. SI	2	35%
Maint. SI	-9	33%
Mgmt. SI	2	57%
Health SI	37	65%

USA AUG 22	
TPI	2701
PRODUCTION	
Milk Lbs	596 Daus -
Fat Lbs	68 Fat % 0.16
Protein Lbs	49 Protein % 0.11
OTHER TRAITS	
DPR	-0.1
Productive Life	4.4
SCC	2.63
TYPE	
PTAT	0.81
Udder Composite	0.67
Feet & Legs Composite	-0.15
BCS	1.07

LINEAR EVALUATION - INTERBULL 2022		-2	+2
STATURE	1.2	[Progress bar]	
CHEST WIDTH	1.28	[Progress bar]	
BODY DEPTH	1.31	[Progress bar]	
ANGULARITY	0.16	[Progress bar]	
RUMP ANGLE	1.36	[Progress bar]	
RUMP WIDTH	0.17	[Progress bar]	
REAR LEG SET	0.43	[Progress bar]	
LOCOMOTION	1.32	[Progress bar]	
FOOT ANGLE	-0.41	[Progress bar]	
FORE UDDER	3.64	[Progress bar]	
REAR UDDER	2.99	[Progress bar]	
UDDER SUPPORT	2.38	[Progress bar]	
UDDER DEPTH	2.79	[Progress bar]	
TEAT PLACEMENT	1.87	[Progress bar]	
TEAT LENGTH	0.46	[Progress bar]	
BCS	0.8	[Progress bar]	
OVERALL TYPE	2.78	[Progress bar]	
OVERALL UDDER	3.09	[Progress bar]	
OVERALL F&L	0.61	[Progress bar]	

PRODUCTION					
Milk Kg	Fat Kg	Protein KG	Solid Kg	Fat %	Prot %
573	28	24	52	0.09	0.07

FERTILITY		CALVING DIFFICULTY			
Calving Interval	Survival	Records	Dairy	Heifer	Diff
-2.5	2.8	2	5.3	53	Low

MANAGEMENT		HEALTH				DTRS
Milk Speed	Temp	SCC	Mastitis	Lamness	TB	0
-23.8	-0.16	-0.34	-0.15	-0.13	5.9	0

- Very High EBI: €304 & Brother of Raptor
- Exceptional Overall Production, Solids and Percentages
- Cell count improver

SIRE: DE-SU 14222 KENOBI-ET

MS: BOMAZ ALTATOPSHOT-ET

MGS: EDG RUBICON-ET

DAM: KOEPON TOPSHOT RUBY 5

MD: KOEPON RUBY-ANN

MGD: JABIR REGENIA

FR7923 (IG)TOBERMARTIN FRANCIS

PED

Date of Birth:
18/01/2021

HO 97%, Beta Casein: aAa
FR 3%

Herd Book Number:
HOLIRLM224111351663



(IG) Tobermartin Francis Dam

Bred by: James Egan, Tarbert, Co Kerry



SCAN QR CODE
FOR MOST
RECENT PROOF



MILK SOLIDS



HEALTH



COMPONENT SPECIALIST



SEXED SEMEN



ROBOT READY

EBI OCT. 22 SOURCE ICBF		REL
EBI	298	58%
Prod. SI	131	77%
Fert. SI	100	47%
Calv. SI	48	57%
Beef. SI	-1	43%
Maint. SI	-1	37%
Mgmt. SI	-2	59%
Health SI	23	67%

Dam Yields	Milk Kgs	Fat Kgs	PTN Kgs	Solids	Fat %	PTN %
Highest Lactation 2	10702	433	429	862	4.05	4.01
Average	9730	408	382	790	4.2	3.92
Life (2 LCT)	19461	815	765	1580	4.19	3.93

LINEAR EVALUATION - INTERBULL 2022		
	-2	+2
STATURE	1.35	██████████
CHEST WIDTH	-0.66	██████████
BODY DEPTH	-0.23	██████████
ANGULARITY	0.7	██████████
RUMP ANGLE	0.88	██████████
RUMP WIDTH	3.24	██████████
REAR LEG SET	-0.48	██████████
LOCOMOTION	0.04	██████████
FOOT ANGLE	-0.16	██████████
FORE UDDER	3.6	██████████
REAR UDDER	3.54	██████████
UDDER SUPPORT	3.05	██████████
UDDER DEPTH	3.18	██████████
TEAT PLACEMENT	0.67	██████████
TEAT LENGTH	0.03	██████████
BCS	-0.4	██████████
OVERALL TYPE	2.44	██████████
OVERALL UDDER	2.75	██████████
OVERALL F&L	0	██████████

PRODUCTION					
Milk Kg	Fat Kg	Protein KG	Solid Kg	Fat %	Prot %
297	22	19	41	0.18	0.15

FERTILITY		CALVING DIFFICULTY					
Calving Interval	Survival	Records	Dairy	Heifer	Diff	Rel	Risk
-5.4	2.6	0	6.2	57	Low		

MANAGEMENT		HEALTH				DTRS
Milk Speed	Temp	SCC	Mastitis	Lamness	TB	HERDS
4.2	-0.02	-0.29	-0.1	-0.03	10.5	0

- Superb combination of Solids, Percentages and High Health SI
- From a cow family that breeds strength
- 4% Protein Dam, averaging over 9,700 Milk Kg with 790 Milk Solids

SIRE: ABS JERONIMO-P-ET

MS: WESTCOAST PERSEUS VG 87

MGS: (IG) LISDUFF MASTERPIECE ET 1

DAM: TOBERMARTIN PERSEUS LADY VG 88

MD: TOBERMARTIN LFM LADY 905 VG 88

MGD: TOBERMARTIN HRZ LADY 518

FR6139 (IG)LISDUFF PERCEPTION

PED

Date of Birth:
19/01/2019

HO 100% | Beta Casein: A2/A2 | aAa 234165

Herd Book Number:
HOLIRLM224508745649

Lisduff Leslie 115 EX90 GDam



Bred by: John J O'Sullivan, Whitechurch, Cork Co Cork



SCAN QR CODE FOR MOST RECENT PROOF



EBI OCT. 22 SOURCE ICBF		REL							
EBI	289	66%	Dam Yields	Milk Kgs	Fat Kgs	PTN Kgs	Solids	Fat %	PTN %
Prod. SI	113	80%	Highest Lactation 6	10298	414	370	784	4.02	3.59
Fert. SI	130	52%	Average	9300	387	331	718	4.16	3.56
Calv. SI	42	90%	Life (6 LCT)	55799	2324	1985	4309	4.16	3.56
Beef. SI	-10	57%							
Maint. SI	1	47%							
Mgmt. SI	4	66%							
Health SI	8	73%							

LINEAR EVALUATION - INTERBULL 2022		-2	+2
STATURE	1.53	[Progress bar]	
CHEST WIDTH	-0.53	[Progress bar]	
BODY DEPTH	-0.58	[Progress bar]	
ANGULARITY	0.4	[Progress bar]	
RUMP ANGLE	0.13	[Progress bar]	
RUMP WIDTH	0.74	[Progress bar]	
REAR LEG SET	-2.24	[Progress bar]	
LOCOMOTION	1.7	[Progress bar]	
FOOT ANGLE	2.44	[Progress bar]	
FORE UDDER	1.7	[Progress bar]	
REAR UDDER	0.91	[Progress bar]	
UDDER SUPPORT	1	[Progress bar]	
UDDER DEPTH	1.95	[Progress bar]	
TEAT PLACEMENT	-0.3	[Progress bar]	
TEAT LENGTH	1.11	[Progress bar]	
BCS	0.2	[Progress bar]	
OVERALL TYPE	1.63	[Progress bar]	
OVERALL UDDER	1.33	[Progress bar]	
OVERALL F&L	1.23	[Progress bar]	

PRODUCTION					
Milk Kg	Fat Kg	Protein KG	Solid Kg	Fat %	Prot %
470	19	20	39	0.02	0.06

FERTILITY		CALVING DIFFICULTY			
Calving Interval	Survival	Records	Dairy	Heifer Diff	Rel Risk
-7.6	2.8	2192	4.9	92	Low

MANAGEMENT		HEALTH				DTRS
Milk Speed	Temp	SCC	Mastitis	Lamness	TB	0
-15.2	-0.02	-0.12	-0.03	0	8.1	0

- Easy Calving for Heifers
- From Great Leslie cow family with 11 generations of VG/EX
- Excellent Fertility Index

SIRE: WESTCOAST PERSEUS

MS: COGENT TWIST EX 96

MGS: LONG-LANGS OMAN OMAN TV TL TV VG 85

DAM: LISDUFF LESLIE 153 EX 90

MD: LISDUFF LESLIE 115 ET EX 90

MGD: LISDUFF LESLIE 81 ET

FR8307 WINSTAR GRAZIANO-ET

PED

Date of Birth:
02/06/2020

HO 100%

Beta Casein:
A1/A2

aAa
432561

Genetic Defect
HH6C

Herd Book Number:
HOL840M003212150599



SCAN QR CODE
FOR MOST
RECENT PROOF



EBI OCT. 22 SOURCE ICBF REL		
EBI	289	50%
Prod. SI	155	68%
Fert. SI	68	38%
Calv. SI	50	46%
Beef. SI	-9	33%
Maint. SI	-3	32%
Mgmt. SI	2	57%
Health SI	26	64%

USA AUG 22			
TPI		2961	
PRODUCTION			
Milk Lbs	121	Daus	-
Fat Lbs	120	Fat %	0.41
Protein Lbs	39	Protein %	0.13
OTHER TRAITS			
DPR	1.3		
Productive Life	6.2		
SCC	2.63		
TYPE			
PTAT	0.32		
Udder Composite	0.82		
Feet & Legs Composite	-0.31		
BCS	-1.1		

LINEAR EVALUATION - INTERBULL 2022			
		-2	+2
STATURE	0.92	[Progress bar]	
CHEST WIDTH	-1.61	[Progress bar]	
BODY DEPTH	-0.21	[Progress bar]	
ANGULARITY	1.66	[Progress bar]	
RUMP ANGLE	0.37	[Progress bar]	
RUMP WIDTH	-0.08	[Progress bar]	
REAR LEG SET	0.51	[Progress bar]	
LOCOMOTION	1.3	[Progress bar]	
FOOT ANGLE	0.27	[Progress bar]	
FORE UDDER	2.88	[Progress bar]	
REAR UDDER	2.39	[Progress bar]	
UDDER SUPPORT	1.81	[Progress bar]	
UDDER DEPTH	2.09	[Progress bar]	
TEAT PLACEMENT	1.17	[Progress bar]	
TEAT LENGTH	0.85	[Progress bar]	
BCS	-1.3	[Progress bar]	
OVERALL TYPE	1.75	[Progress bar]	
OVERALL UDDER	2	[Progress bar]	
OVERALL F&L	1.14	[Progress bar]	

PRODUCTION					
Milk Kg	Fat Kg	Protein KG	Solid Kg	Fat %	Prot %
628	34	24	58	0.16	0.04

FERTILITY		CALVING DIFFICULTY			
Calving Interval	Survival	Records	Dairy	Heifer	Diff
-3	2.5	0	5.2	49	Low

MANAGEMENT		HEALTH				DTRS
Milk Speed	Temp	SCC	Mastitis	Lamness	TB	0
-28.2	-0.2	-0.26	-0.1	-0.09	6.1	0

- Massive 58 kg Milk Solids
- Health Improver
- Super Percentages with 0.16% Fat

SIRE: PEAK ALTAZAZZLE-ET

MS: ABS CRIMSON-ET

MGS: S-S-I MONTROSS JEDI-ET

DAM: WINSTAR CRIMSON GEM-ET

MD: SEAGULL-BAY JEDI MIRAGE-ET

MGD: IHG NOMINEE MER 9040-ET

FR7533 BOMAZ EPISODE-ET

PED

Date of Birth:
14/06/2019

HO 100% | Beta Casein:
A2/A2 | aAa

Herd Book Number:
HOL840M003205704112



Episode



SCAN QR CODE
FOR MOST
RECENT PROOF



EBI OCT. 22 SOURCE ICBF REL		
EBI	288	53%
Prod. SI	128	73%
Fert. SI	90	42%
Calv. SI	50	53%
Beef. SI	-7	33%
Maint. SI	0	32%
Mgmt. SI	4	58%
Health SI	24	66%

USA AUG 22			
TPI	2922		
PRODUCTION			
Milk Lbs	368	Daus	-
Fat Lbs	110	Fat %	0.34
Protein Lbs	50	Protein %	0.14
OTHER TRAITS			
DPR	0.6		
Productive Life	4.7		
SCC	2.83		
TYPE			
PTAT	0.59		
Udder Composite	0.51		
Feet & Legs Composite	0.28		
BCS	0.69		

LINEAR EVALUATION - INTERBULL 2022			
		-2	+2
STATURE	1.29	[Progress bar]	
CHEST WIDTH	-0.87	[Progress bar]	
BODY DEPTH	-0.75	[Progress bar]	
ANGULARITY	0.42	[Progress bar]	
RUMP ANGLE	0.61	[Progress bar]	
RUMP WIDTH	1.55	[Progress bar]	
REAR LEG SET	-0.65	[Progress bar]	
LOCOMOTION	2.49	[Progress bar]	
FOOT ANGLE	-0.55	[Progress bar]	
FORE UDDER	3.67	[Progress bar]	
REAR UDDER	3.25	[Progress bar]	
UDDER SUPPORT	2.01	[Progress bar]	
UDDER DEPTH	2.93	[Progress bar]	
TEAT PLACEMENT	1.78	[Progress bar]	
TEAT LENGTH	0.08	[Progress bar]	
BCS	-0.1	[Progress bar]	
OVERALL TYPE	2.85	[Progress bar]	
OVERALL UDDER	2.8	[Progress bar]	
OVERALL F&L	1.29	[Progress bar]	

PRODUCTION					
Milk Kg	Fat Kg	Protein KG	Solid Kg	Fat %	Prot %
352	28	17	45	0.23	0.09

FERTILITY		CALVING DIFFICULTY			
Calving Interval	Survival	Records	Dairy	Heifer	Diff
-5.4	1.8	2	6.7	57	Moderate

MANAGEMENT		HEALTH				DTRS
Milk Speed	Temp	SCC	Mastitis	Lamness	TB	0
-31	-0.17	-0.23	-0.13	-0.04	10.6	0

- Great balance of production and fertility
- Brother of Vader
- Excellent Udder Score and Exceptional Fat at 0.23%

SIRE: DEVO 8084 ENTITY-ET

MS: BOMAZ ALTAROBSON-ET

MGS: WOODCREST MOGUL YODER-ET

DAM: BOMAZ ROBSON 49-ET

MD: BOMAZ YODER 6993-ET

MGD: BOMAZ FRIDO 6185

FR7824 PROGENESIS NAPAVALLEY

PED

Date of Birth:
23/09/2019

HO 100% | Beta Casein:
A2/A2 | aAa
423651

Herd Book Number:
HOLCANM000013483458



Holly McSEMEX



SCAN QR CODE
FOR MOST
RECENT PROOF



MILK SOLIDS



HIGH TYPE SIRE



A2 A2



ROBOT READY



Immunity+

EBI OCT. 22 SOURCE ICBF REL		
EBI	288	52%
Prod. SI	128	73%
Fert. SI	87	42%
Calv. SI	57	44%
Beef. SI	-6	33%
Maint. SI	-3	32%
Mgmt. SI	7	56%
Health SI	19	63%

USA AUG 22			
TPI		2735	
PRODUCTION			
Milk Lbs	-31	Daus	-
Fat Lbs	58	Fat %	0.21
Protein Lbs	34	Protein %	0.12
OTHER TRAITS			
DPR	3.1		
Productive Life	5.5		
SCC	2.67		
TYPE			
PTAT	0.38		
Udder Composite	0.3		
Feet & Legs Composite	0.74		
BCS	1.15		

LINEAR EVALUATION - INTERBULL 2022			
		-2	+2
STATURE	1.06	██████████	
CHEST WIDTH	0.79	██████████	
BODY DEPTH	0.79	██████████	
ANGULARITY	0.38	██████████	
RUMP ANGLE	-0.84	██████████	
RUMP WIDTH	1.54	██████████	
REAR LEG SET	-1.55	██████████	
LOCOMOTION	2.17	██████████	
FOOT ANGLE	1.99	██████████	
FORE UDDER	2.43	██████████	
REAR UDDER	2.28	██████████	
UDDER SUPPORT	1.92	██████████	
UDDER DEPTH	1.53	██████████	
TEAT PLACEMENT	1.63	██████████	
TEAT LENGTH	0.27	██████████	
BCS	0.5	██████████	
OVERALL TYPE	2.39	██████████	
OVERALL UDDER	2.03	██████████	
OVERALL F&L	1.91	██████████	

PRODUCTION					
Milk Kg	Fat Kg	Protein KG	Solid Kg	Fat %	Prot %
423	26	19	45	0.16	0.07

FERTILITY		CALVING DIFFICULTY			
Calving Interval	Survival	Records	Dairy	Heifer	Diff
-4.9	2	0	5	50	Low

MANAGEMENT		HEALTH				DTRS
Milk Speed	Temp	SCC	Mastitis	Lamness	TB	0
-42.5	-0.17	-0.21	-0.08	-0.04	7.6	0

- Limited supply left
- Outcross pedigree
- Excellend Milking Speed and High Fat at 0.16%

SIRE: SCHOENE-KUH ALTAROBERT-ET

MS: PROGENESIS TOPTCH

MGS: S-S-I MONTROSS JEDI-ET

DAM: PEAK TOPTCH NICKLE

MD: BRYHILL RDIKA-ETS

MGD: BRYHILL PURE NICKLEODEON

FR7910 (IG)BALLYELLY CHILLI

PED

Date of Birth:
01/03/2021

HO 100% | Beta Casein: aAa

Herd Book Number:
HOLIRLM219965852644

Family of Chilli: MONAMORE DURHAM RAVEN EX93



Bred by: Trevor Lockhart, Ramelton, Letterkenny Co Donegal



SCAN QR CODE
FOR MOST
RECENT PROOF



EBI OCT. 22 SOURCE ICBF		REL
EBI	286	56%
Prod. SI	122	77%
Fert. SI	101	41%
Calv. SI	49	58%
Beef. SI	-6	39%
Maint. SI	-2	35%
Mgmt. SI	-1	60%
Health SI	23	67%

	Dam Yields	Milk Kgs	Fat Kgs	PTN Kgs	Solids	Fat %	PTN %
Highest Lactation 2		11101	437	372	809	3.93	3.35
Average		9760	378	324	701	3.86	3.32
Life (3 LCT)		29280	1133	971	2104	3.87	3.32

LINEAR EVALUATION - INTERBULL 2022		-2	+2
STATURE	0.24	[Progress bar]	
CHEST WIDTH	1.18	[Progress bar]	
BODY DEPTH	0.44	[Progress bar]	
ANGULARITY	0.14	[Progress bar]	
RUMP ANGLE	-0.72	[Progress bar]	
RUMP WIDTH	1.4	[Progress bar]	
REAR LEG SET	0.94	[Progress bar]	
LOCOMOTION	1.3	[Progress bar]	
FOOT ANGLE	0.4	[Progress bar]	
FORE UDDER	2.89	[Progress bar]	
REAR UDDER	2.18	[Progress bar]	
UDDER SUPPORT	1.88	[Progress bar]	
UDDER DEPTH	2.47	[Progress bar]	
TEAT PLACEMENT	1.34	[Progress bar]	
TEAT LENGTH	0.94	[Progress bar]	
BCS	0.7	[Progress bar]	
OVERALL TYPE	2.55	[Progress bar]	
OVERALL UDDER	2.54	[Progress bar]	
OVERALL F&L	1.36	[Progress bar]	

PRODUCTION					
Milk Kg	Fat Kg	Protein KG	Solid Kg	Fat %	Prot %
571	19	23	42	-0.05	0.05

FERTILITY		CALVING DIFFICULTY					
Calving Interval	Survival	Records	Dairy	Heifer	Diff	Rel	Risk
-5.5	2.6	0	5.8	62	Low		

MANAGEMENT		HEALTH				DTRS
Milk Speed	Temp	SCC	Mastitis	Lamness	TB	0
-18.7	-0.2	-0.2	-0.1	-0.09	5.3	0

- Very High Health SI & Excellent BCS
- Great balance of production and fertility
- From the famous Raven Cow Family

SIRE: PEAK CHILTON-ET

MS: BALLYCAIRN CORINTHIAN

MGS: MOUNTFIELD SSI DCY MOGUL-ET EX 93

DAM: ARDNALEM CORINTHIAN RAVEN ET EX 90

MD: MONAMORE RAVEN 27 ET EX 91

MGD: MONAMORE MCL RAVEN

FR7530 BOMAZ VADER-ET

PED

Date of Birth:
15/06/2019

HO 100% | Beta Casein:
A2/A2 | aAa

Herd Book Number:
HOL840M003206094036



SCAN QR CODE
FOR MOST
RECENT PROOF



MILK SOLIDS



HEALTH



COMPONENT SPECIALIST



SEXED ONLY



A2



ROBOT READY

EBI OCT. 22 SOURCE ICBF		REL
EBI	275	57%
Prod. SI	152	73%
Fert. SI	59	48%
Calv. SI	52	65%
Beef. SI	-2	35%
Maint. SI	-8	33%
Mgmt. SI	1	57%
Health SI	20	64%

USA AUG 22	
TPI	2772
PRODUCTION	
Milk Lbs	907 Daus -
Fat Lbs	83 Fat % 0.17
Protein Lbs	62 Protein % 0.12
OTHER TRAITS	
DPR	-0.7
Productive Life	3.3
SCC	2.79
TYPE	
PTAT	0.86
Udder Composite	0.68
Feet & Legs Composite	-0.54
BCS	0.84

LINEAR EVALUATION - INTERBULL 2022	
STATURE	1.57
CHEST WIDTH	-0.09
BODY DEPTH	0.31
ANGULARITY	0.85
RUMP ANGLE	1.65
RUMP WIDTH	3.23
REAR LEG SET	0
LOCOMOTION	-0.56
FOOT ANGLE	0.37
FORE UDDER	3.61
REAR UDDER	3.69
UDDER SUPPORT	1.83
UDDER DEPTH	2.02
TEAT PLACEMENT	1.47
TEAT LENGTH	0.82
BCS	-0.8
OVERALL TYPE	1.42
OVERALL UDDER	2.65
OVERALL F&L	-0.81

PRODUCTION					
Milk Kg	Fat Kg	Protein KG	Solid Kg	Fat %	Prot %
620	30	25	55	0.09	0.06

FERTILITY		CALVING DIFFICULTY			
Calving Interval	Survival	Records	Dairy	Heifer	Diff
-2.4	2.3	16	6.7	54	Moderate

MANAGEMENT		HEALTH				DTRS
Milk Speed	Temp	SCC	Mastitis	Lamness	TB	0
-31.4	-0.23	-0.22	-0.07	-0.06	5	0

- Huge Production at 55kg Milk Solids
- A2A2
- 3+ on Rump Width

SIRE: DE-SU 14222 KENOBI-ET

MS: BOMAZ ALTAROBSON-ET

MGS: WOODCREST MOGUL YODER-ET

DAM: BOMAZ ROBSON 49-ET

MD: BOMAZ YODER 6993-ET

MGD: BOMAZ FRIDO 6185

FR7158 (IG)DOONMANAGH CHOPPER

PED

Date of Birth:
12/02/2020

HO 88%,
FR 12%

Beta Casein:
A1/A1

aAa
234165

Herd Book Number:
HOLIRLM214299441425



Maria Kelly
(IG) Doonmanagh Chopper Dam



Bred by: John P Galvin, Lispole, Co Kerry



SCAN QR CODE
FOR MOST
RECENT PROOF



EBI OCT. 22 SOURCE ICBF		REL
EBI	273	60%
Prod. SI	128	79%
Fert. SI	80	44%
Calv. SI	53	79%
Beef. SI	-17	46%
Maint. SI	9	40%
Mgmt. SI	10	57%
Health SI	10	65%

	Dam Yields	Milk Kgs	Fat Kgs	PTN Kgs	Solids	Fat %	PTN %
Highest Lactation 2		6861	272	263	535	3.97	3.84
Average		6536	254	249	502	3.88	3.82
Life (2 LCT)		13071	507	498	1005	3.88	3.81

LINEAR EVALUATION - INTERBULL 2022		-2	+2
STATURE	-0.23	[Progress bar]	
CHEST WIDTH	-0.44	[Progress bar]	
BODY DEPTH	-2.09	[Progress bar]	
ANGULARITY	-1.16	[Progress bar]	
RUMP ANGLE	0.43	[Progress bar]	
RUMP WIDTH	-1.54	[Progress bar]	
REAR LEG SET	-3.4	[Progress bar]	
LOCOMOTION	1.4	[Progress bar]	
FOOT ANGLE	2.9	[Progress bar]	
FORE UDDER	3.15	[Progress bar]	
REAR UDDER	1.59	[Progress bar]	
UDDER SUPPORT	1.26	[Progress bar]	
UDDER DEPTH	2.71	[Progress bar]	
TEAT PLACEMENT	0.98	[Progress bar]	
TEAT LENGTH	-2.33	[Progress bar]	
BCS	1.5	[Progress bar]	
OVERALL TYPE	2.08	[Progress bar]	
OVERALL UDDER	1.85	[Progress bar]	
OVERALL F&L	1.68	[Progress bar]	

PRODUCTION					
Milk Kg	Fat Kg	Protein KG	Solid Kg	Fat %	Prot %
470	20	22	42	0.03	0.09

FERTILITY		CALVING DIFFICULTY			
Calving Interval	Survival	Records	Dairy	Heifer	Diff
-3.3	3.1	171	4.6	66	Low

MANAGEMENT		HEALTH				DTRS
Milk Speed	Temp	SCC	Mastitis	Lamness	TB	0
-18.3	0.11	-0.08	-0.05	-0.03	8.9	0

- Will breed average sized cows
- Exceptional Management SI of 10
- Excellent BCS

SIRE: LARS-ACRES SUPER NERD-ET

MS: COOLNASOON ART

MGS: (IG) LAURAGH EVERT

DAM: DOONMANAGH FR2249CHERRY GP 84

MD: DOONMANAGH CHERRY 5

MGD: DOONMANAGH RIP CHERRY GP 82

FR6445 KOEPON RAPTOR

PED

Date of Birth:
22/03/2019

HO 100%

Beta Casein:
A1/A2

aAa
423

Genetic Defect
HH6C

Herd Book Number:
HOLNLDM000682613808



Raptor



SCAN QR CODE
FOR MOST
RECENT PROOF



MILK SOLIDS



HEALTH



COMPONENT SPECIALIST



HIGH TYPE SIRE



SEXED SEMEN

EBI OCT. 22 SOURCE ICBF REL		
EBI	269	58%
Prod. SI	129	73%
Fert. SI	57	46%
Calv. SI	65	80%
Beef. SI	-5	36%
Maint. SI	-4	32%
Mgmt. SI	-1	57%
Health SI	28	64%

USA AUG 22			
TPI		2735	
PRODUCTION			
Milk Lbs	-177	Daus	-
Fat Lbs	64	Fat %	0.25
Protein Lbs	35	Protein %	0.15
OTHER TRAITS			
DPR	2.5		
Productive Life	6.5		
SCC	2.68		
TYPE			
PTAT	-0.04		
Udder Composite	0.2		
Feet & Legs Composite	0.38		
BCS	0.68		

LINEAR EVALUATION - INTERBULL 2022			
		-2	+2
STATURE	1.26	[Progress bar]	
CHEST WIDTH	-0.58	[Progress bar]	
BODY DEPTH	-1.18	[Progress bar]	
ANGULARITY	-0.09	[Progress bar]	
RUMP ANGLE	0.75	[Progress bar]	
RUMP WIDTH	-1.4	[Progress bar]	
REAR LEG SET	-0.23	[Progress bar]	
LOCOMOTION	2.68	[Progress bar]	
FOOT ANGLE	0.58	[Progress bar]	
FORE UDDER	3.22	[Progress bar]	
REAR UDDER	2.77	[Progress bar]	
UDDER SUPPORT	2.34	[Progress bar]	
UDDER DEPTH	3.8	[Progress bar]	
TEAT PLACEMENT	1.28	[Progress bar]	
TEAT LENGTH	-0.54	[Progress bar]	
BCS	0.4	[Progress bar]	
OVERALL TYPE	2.85	[Progress bar]	
OVERALL UDDER	2.39	[Progress bar]	
OVERALL F&L	1.58	[Progress bar]	

PRODUCTION					
Milk Kg	Fat Kg	Protein KG	Solid Kg	Fat %	Prot %
422	27	19	46	0.18	0.07

FERTILITY		CALVING DIFFICULTY			
Calving Interval	Survival	Records	Dairy	Heifer	Diff
-2.5	2	210	5.7	75	Low

MANAGEMENT		HEALTH				DTRS
Milk Speed	Temp	SCC	Mastitis	Lamness	TB	0
-33.4	-0.33	-0.3	-0.11	-0.08	10.9	0

- Superb Production, Solids and Percentages
- Son of Lawson
- Good BCS

SIRE: PEAK ALTALAWSON-ET

MS: BOMAZ ALTATOPSHOT-ET

MGS: EDG RUBICON-ET

DAM: KOEPON TOPSHOT RUBY 5

MD: KOEPON RUBY-ANN

MGD: JABIR REGENIA

PRE-ORDER

PROVEN

FR4689 ABS JERONIMO-P-ET

PED

Date of Birth:
06/03/2017

HO 100% | Beta Casein:
A2/A2 | aAa

Herd Book Number:
HOL840M003141494321



Jeronimo Daughters



SCAN QR CODE
FOR MOST
RECENT PROOF



MILK SOLIDS



HEALTH



COMPONENT SPECIALIST



HIGH TYPE SIRE



A2

EBI OCT. 22 SOURCE ICBF		REL
EBI	266	78%
Prod. SI	117	90%
Fert. SI	89	76%
Calv. SI	38	84%
Beef. SI	-4	75%
Maint. SI	-1	45%
Mgmt. SI	-2	63%
Health SI	29	70%

USA AUG 22	
TPI	2735
PRODUCTION	
Milk Lbs	-227 Daus -
Fat Lbs	80 Fat % 0.32
Protein Lbs	28 Protein % 0.13
OTHER TRAITS	
DPR	1.6
Productive Life	4.1
SCC	2.54
TYPE	
PTAT	1
Udder Composite	1.12
Feet & Legs Composite	0.14
BCS	-0.09

LINEAR EVALUATION - INTERBULL 2022	
STATURE	1.92
CHEST WIDTH	-1.95
BODY DEPTH	-0.81
ANGULARITY	1.09
RUMP ANGLE	0.94
RUMP WIDTH	1.32
REAR LEG SET	-0.73
LOCOMOTION	1.33
FOOT ANGLE	0.15
FORE UDDER	3.62
REAR UDDER	3.32
UDDER SUPPORT	1.69
UDDER DEPTH	4.23
TEAT PLACEMENT	0.08
TEAT LENGTH	-2.19
BCS	-0.8
OVERALL TYPE	2.92
OVERALL UDDER	2.58
OVERALL F&L	1.04

PRODUCTION					
Milk Kg	Fat Kg	Protein KG	Solid Kg	Fat %	Prot %
223	25	15	40	0.27	0.12

FERTILITY		CALVING DIFFICULTY			
Calving Interval	Survival	Records	Dairy	Heifer	Diff
-4.5	2.6	271	7.2	84	Moderate

MANAGEMENT		HEALTH				DTRS
Milk Speed	Temp	SCC	Mastitis	Lamness	TB	0
-25.2	-0.27	-0.34	-0.14	-0.04	7.2	0

- High Solids and A2/A2
- Daughter proven with Superb Percentages of 0.27% Fat and 0.12% Protein
- Farmer favourite across the world, breeding black fertile cows
- Great 1st Parity performance of daughters producing, on average, over 6,200 Milk Kg, 474kg Solids and 4.16% Fat and 3.45% Protein

SIRE: ENDCO SUPERHERO-ET

MS: VIEW-HOME POWERBALL-P-ET

MGS: MR WELCOME HILL TANGO-ET

DAM: ABS 7726 JAZLYN-P-ET

MD: RICHMOND-FD TANGO JULY-ET

MGD: BUTLerview SR JULIE-ET

PRE-ORDER

PROVEN

S3579 PROGENESIS WIMBLEDON

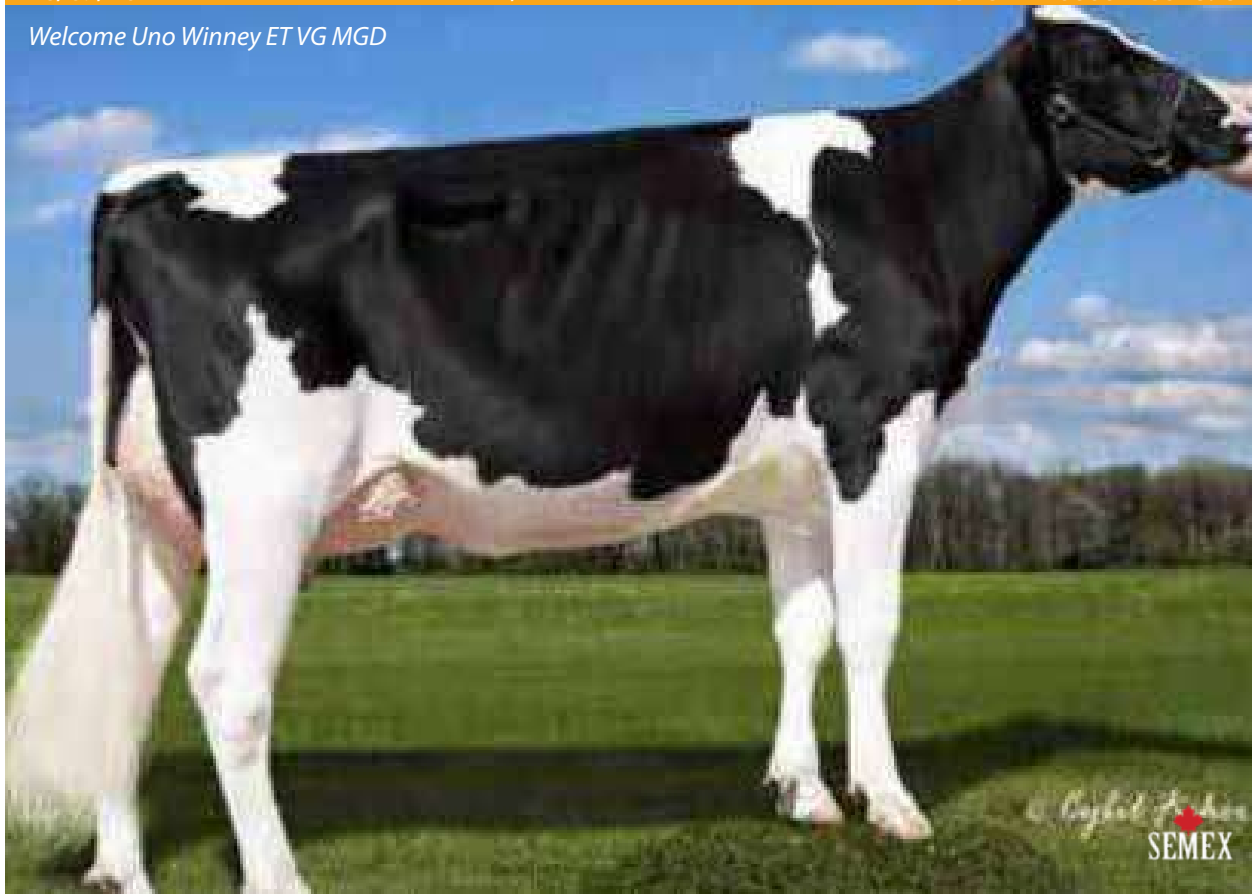
PED

Date of Birth:
26/09/2017

HO 100% | Beta Casein:
A2/A2 | aAa
423651

Herd Book Number:
HOLCANM000012857898

Welcome Uno Winney ET VG MGD



SCAN QR CODE
FOR MOST
RECENT PROOF



MILK SOLIDS



HEALTH



COMPONENT SPECIALIST



HIGH TYPE SIRE



A2



EBI OCT. 22 SOURCE ICBF		REL
EBI	262	68%
Prod. SI	133	89%
Fert. SI	84	59%
Calv. SI	44	83%
Beef. SI	-11	38%
Maint. SI	-6	34%
Mgmt. SI	-5	56%
Health SI	22	64%

USA AUG 22	
TPI	2710
PRODUCTION	
Milk Lbs	-922
Fat Lbs	63
Protein Lbs	27
OTHER TRAITS	
DPR	2.8
Productive Life	4.5
SCC	2.69
TYPE	
PTAT	0.43
Udder Composite	0.54
Feet & Legs Composite	0.43
BCS	0.99

LINEAR EVALUATION - INTERBULL 2022	
STATURE	1.47
CHEST WIDTH	0.78
BODY DEPTH	0.64
ANGULARITY	0.45
RUMP ANGLE	-0.08
RUMP WIDTH	0.71
REAR LEG SET	-2
LOCOMOTION	1.73
FOOT ANGLE	2.31
FORE UDDER	3.74
REAR UDDER	2.55
UDDER SUPPORT	1.37
UDDER DEPTH	2.3
TEAT PLACEMENT	1.98
TEAT LENGTH	-1.07
BCS	0.7
OVERALL TYPE	2.54
OVERALL UDDER	2.31
OVERALL F&L	1.17

PRODUCTION					
Milk Kg	Fat Kg	Protein KG	Solid Kg	Fat %	Prot %
319	29	17	46	0.27	0.11

FERTILITY		CALVING DIFFICULTY			
Calving Interval	Survival	Records	Dairy	Heifer	Diff
-6.2	0.4	313	6.8	85	Low

MANAGEMENT		HEALTH				DTRS
Milk Speed	Temp	SCC	Mastitis	Lamness	TB	0
-6.1	-0.18	-0.2	-0.1	-0.07	3.8	0

- Semex Immunity Plus Sire
- Exceptional Percentages & Breeds cows with power
- Limited supply

SIRE: BOMAZ ALTAROBSON-ET

MS: MR MOGUL DENVER 1426-ET

MGS: JEROD

DAM: TRAMILDA DENVER WHITNEY-ET

MD: IHG WINNEY JEROD 55380-ET

MGD: WELCOME UNO WINNEY ET VG MGD

FR7812 PROGENESIS BLACKTIE

PED

Date of Birth:
14/05/2019

HO 100% | Beta Casein:
A1/A2 | aAa
423165

Herd Book Number:
HOLCANM000013353846

Fourth Dam of Blacktie



SCAN QR CODE
FOR MOST
RECENT PROOF



EBI OCT. 22 SOURCE ICBF REL		
EBI	257	55%
Prod. SI	139	73%
Fert. SI	72	46%
Calv. SI	54	51%
Beef. SI	-13	34%
Maint. SI	-9	33%
Mgmt. SI	-3	58%
Health SI	17	65%

USA AUG 22			
TPI		2721	
PRODUCTION			
Milk Lbs	-40	Daus	-
Fat Lbs	95	Fat %	0.35
Protein Lbs	45	Protein %	0.17
OTHER TRAITS			
DPR	-1.9		
Productive Life	2.5		
SCC	2.94		
TYPE			
PTAT	1.17		
Udder Composite	0.7		
Feet & Legs Composite	0.11		
BCS	0.53		

LINEAR EVALUATION - INTERBULL 2022

		-2	+2
STATURE	2.2	[Progress bar]	
CHEST WIDTH	0.02	[Progress bar]	
BODY DEPTH	0.87	[Progress bar]	
ANGULARITY	1.48	[Progress bar]	
RUMP ANGLE	1.11	[Progress bar]	
RUMP WIDTH	1.43	[Progress bar]	
REAR LEG SET	0.32	[Progress bar]	
LOCOMOTION	2.21	[Progress bar]	
FOOT ANGLE	1.87	[Progress bar]	
FORE UDDER	3.99	[Progress bar]	
REAR UDDER	2.97	[Progress bar]	
UDDER SUPPORT	1.68	[Progress bar]	
UDDER DEPTH	3.21	[Progress bar]	
TEAT PLACEMENT	0.61	[Progress bar]	
TEAT LENGTH	-0.96	[Progress bar]	
BCS	-1.2	[Progress bar]	
OVERALL TYPE	2.44	[Progress bar]	
OVERALL UDDER	2.73	[Progress bar]	
OVERALL F&L	1.14	[Progress bar]	

PRODUCTION					
Milk Kg	Fat Kg	Protein KG	Solid Kg	Fat %	Prot %
274	29	17	46	0.31	0.13

FERTILITY		CALVING DIFFICULTY			
Calving Interval	Survival	Records	Dairy	Heifer	Diff
-3.9	1.9	0	7.1	55	Moderate

MANAGEMENT		HEALTH				DTRS
Milk Speed	Temp	SCC	Mastitis	Lamness	TB	0
-26.1	-0.32	-0.2	-0.08	-0.03	8.7	0

- Great Combination of Solids, Fat and Protein Percentages
- Son of Lawson
- Positive for Chest and Rump Width

SIRE: PEAK ALTALAWSON-ET

MS: BACON-HILL PETY MODESTY-ET VG 86

MGS: SEAGULL-BAY SILVER-ET

DAM: PROGENESIS MOD BOUVARDIA

MD: PROGENESIS SILVER BIONCA VG 85

MGD: PES009 SUPERSIRE BREANNE

FR7905 (IG)BUNACLOY ALIBI

PED

Date of Birth:
14/02/2021

HO 100% | Beta Casein: aAa

Herd Book Number:
HOLIRLM217146724259



Family of Alibi: KHW Regiment Apple-Red-ET EX96



Bred by: Mike Magan, Longford, Co Longford



SCAN QR CODE
FOR MOST
RECENT PROOF



EBI OCT. 22 SOURCE ICBF		REL
EBI	253	60%
Prod. SI	127	79%
Fert. SI	83	46%
Calv. SI	27	59%
Beef. SI	-2	46%
Maint. SI	-3	47%
Mgmt. SI	0	63%
Health SI	21	69%

	Dam Yields	Milk Kgs	Fat Kgs	PTN Kgs	Solids	Fat %	PTN %
Highest Lactation 3		8508	328	306	634	3.86	3.6
Average		7743	296	279	575	3.82	3.6
Life (3 LCT)		23228	887	837	1724	3.82	3.6

LINEAR EVALUATION - INTERBULL 2022		-2	+2
STATURE	1.4	[Progress bar]	
CHEST WIDTH	0.04	[Progress bar]	
BODY DEPTH	0.66	[Progress bar]	
ANGULARITY	0.39	[Progress bar]	
RUMP ANGLE	0.12	[Progress bar]	
RUMP WIDTH	1.01	[Progress bar]	
REAR LEG SET	-1.07	[Progress bar]	
LOCOMOTION	2.3	[Progress bar]	
FOOT ANGLE	1.21	[Progress bar]	
FORE UDDER	3.25	[Progress bar]	
REAR UDDER	2.49	[Progress bar]	
UDDER SUPPORT	3.11	[Progress bar]	
UDDER DEPTH	3.14	[Progress bar]	
TEAT PLACEMENT	0.87	[Progress bar]	
TEAT LENGTH	0.58	[Progress bar]	
BCS	0.3	[Progress bar]	
OVERALL TYPE	2.29	[Progress bar]	
OVERALL UDDER	2.66	[Progress bar]	
OVERALL F&L	1.8	[Progress bar]	

PRODUCTION					
Milk Kg	Fat Kg	Protein KG	Solid Kg	Fat %	Prot %
375	27	18	45	0.2	0.09

FERTILITY		CALVING DIFFICULTY					
Calving Interval	Survival	Records	Dairy	Heifer	Diff	Rel	Risk
-4.8	1.8	0	6.5	60	Moderate		

MANAGEMENT		HEALTH				DTRS
Milk Speed	Temp	SCC	Mastitis	Lamness	TB	HERDS
-11	-0.09	-0.19	-0.1	-0.06	7.8	0

- Superb Production, Solids and Percentages
- Apple Cow Family
- Dam averageing over 7,700 Milk Kg with 575 Milk Solids

SIRE: VH PRASER

MS: VIEW-HOME MONTEREY-ET

MGS: VAL-BISSON DOORMAN EX 90

DAM: BUNACLOY V-H MONTEREY ALIBI ET GP 82

MD: BUNACLOY V-B DOORMAN ALIOLI ET VG 88

MGD: WEEPINGASH JASPER APPOINT ET

FR4187 WESTCOAST PERSEUS

PED

Date of Birth:
05/12/2015

HO 100% | Beta Casein: A2/A2 | aAa 126345 | Genetic Defect HH5C

Herd Book Number:
HOLCANM000012283318



Perseus Daughters



SCAN QR CODE FOR MOST RECENT PROOF



EBI OCT. 22 SOURCE ICBF REL	
EBI	252 95%
Prod. SI	143 99%
Fert. SI	64 91%
Calv. SI	37 97%
Beef. SI	-2 98%
Maint. SI	-3 95%
Mgmt. SI	0 78%
Health SI	14 90%

USA AUG 22	
TPI	2696
PRODUCTION	
Milk Lbs	451 Daus -
Fat Lbs	50 Fat % 0.11
Protein Lbs	41 Protein % 0.09
OTHER TRAITS	
DPR	2.3
Productive Life	3.9
SCC	2.67
TYPE	
PTAT	0.88
Udder Composite	1.11
Feet & Legs Composite	-0.12
BCS	-0.12

LINEAR EVALUATION - INTERBULL 2022	
STATURE	1.37
CHEST WIDTH	-0.27
BODY DEPTH	0.58
ANGULARITY	1.11
RUMP ANGLE	-0.68
RUMP WIDTH	0.68
REAR LEG SET	-3.72
LOCOMOTION	0.49
FOOT ANGLE	3.14
FORE UDDER	3.31
REAR UDDER	3.08
UDDER SUPPORT	3.43
UDDER DEPTH	2.47
TEAT PLACEMENT	3
TEAT LENGTH	-1.09
BCS	-0.5
OVERALL TYPE	2.18
OVERALL UDDER	2.49
OVERALL F&L	0.6

PRODUCTION					
Milk Kg	Fat Kg	Protein KG	Solid Kg	Fat %	Prot %
667	23	26	49	-0.04	0.06

FERTILITY		CALVING DIFFICULTY			
Calving Interval	Survival	Records	Dairy	Heifer	Diff
-3	2.1	8117	5.2	99	Low

MANAGEMENT		HEALTH				DTRS
Milk Speed	Temp	SCC	Mastitis	Lamness	TB	2926
-8.5	-0.08	-0.2	-0.06	0	9.6	HERDS 675

- Easy calving for Heifers
- Semex Immunity Plus Sire
- Huge Famer Satisfaction

SIRE: SANDY-VALLEY-1 PENMANSHIP

MS: VAL-BISSON DOORMAN EX 90

MGS: ROYLANE SOGRA ROBUST-ET VG 88

DAM: VIEW-HOME DRMAN WSCONSIN-ET VG 88

MD: PINE-TREE 2149ROBST 4846-ET VG 87

MGD: PINE-TREE ZENITH SHEEN

FR8697 WESTCOAST MIDMARCH

PED

Date of Birth:
29/06/2020

HO 100% | Beta Casein: A2/A2 | aAa 243615

Herd Book Number:
HOLCANM000013636750

NEW



SCAN QR CODE FOR MOST RECENT PROOF



EBI OCT. 22 SOURCE ICBF REL	
EBI	250 50%
Prod. SI	119 68%
Fert. SI	78 37%
Calv. SI	34 47%
Beef. SI	-6 34%
Maint. SI	-8 33%
Mgmt. SI	4 58%
Health SI	30 64%

USA AUG 22	
TPI	2999
PRODUCTION	
Milk Lbs	282 Daus -
Fat Lbs	97 Fat % 0.3
Protein Lbs	44 Protein % 0.12
OTHER TRAITS	
DPR	1.5
Productive Life	4.8
SCC	2.72
TYPE	
PTAT	1.84
Udder Composite	2.17
Feet & Legs Composite	0.87
BCS	0.73

LINEAR EVALUATION - INTERBULL 2022	
STATURE	1.19
CHEST WIDTH	-0.4
BODY DEPTH	0.52
ANGULARITY	0.79
RUMP ANGLE	0.2
RUMP WIDTH	-0.44
REAR LEG SET	-1.01
LOCOMOTION	2.82
FOOT ANGLE	0.84
FORE UDDER	4.39
REAR UDDER	3.72
UDDER SUPPORT	2.3
UDDER DEPTH	3.68
TEAT PLACEMENT	1.39
TEAT LENGTH	-2.57
BCS	-0.07
OVERALL TYPE	3.27
OVERALL UDDER	3.2
OVERALL F&L	2.42

PRODUCTION					
Milk Kg	Fat Kg	Protein KG	Solid Kg	Fat %	Prot %
392	28	16	44	0.2	0.05

FERTILITY		CALVING DIFFICULTY			
Calving Interval	Survival	Records	Dairy	Heifer	Diff
-4.87	1.33	0	6.32	52	Moderate

MANAGEMENT		HEALTH				DTRS
Milk Speed	Temp	SCC	Mastitis	Lamness	TB	0
-21.08	-0.08	-0.22	-0.13	-0.13	4.23	0

- Great Combination of Solids and Percentages
- A2/A2 Sire
- Very High EBI

SIRE: CLAYOK ZASBERILLA

MS: S-S-I PR RENEGADE-ET

MGS: ENDCO SUPERHERO-ET

DAM: FLY-HIGHER RNEGADE MARCH-ET

MD: FLY-HIGHER HERO MISS-ET

MGD: FLY-HIGHER RUBI HAPPY-ET

Active List

EBI OCT 22 SOURCE ICBF

Code	NAME	Cat	Proof	EBI	Prod SI	Fert SI	Health SI	Maint SI	MILK KG	FAT KG	PROT KG	Solids KG	FAT %	PROT %	Type	Mammary	Feet & Legs	Sire	Maternal Grand Sire	Sexed	Pre Order
FR7575	PREHEN RINGROSE	PED	GS	304	145	66	37	-9	573	28	24	52	0.09	0.07	2.78	3.09	0.61	DE-SU 14222 KENOBI-ET	BOMAZ ALTATOPSHOT-ET		✓
FR7923	(IG)TOBERMARTIN FRANCIS	PED	GS	298	131	100	23	-1	297	22	19	41	0.18	0.15	2.44	2.75	0	ABS JERONIMO-P-ET	WESTCOAST PERSEUS VG 87	Sexed	
FR8307	WINSTAR GRAZIANO-ET	PED	GS	289	155	68	26	-3	628	34	24	58	0.16	0.04	1.75	2	1.14	PEAK ALTAZAZZLE-ET	ABS CRIMSON-ET		✓
FR6139	(IG)LISDUFF PERCEPTION	PED	GS	289	113	130	8	1	470	19	20	39	0.02	0.06	1.63	1.33	1.23	WESTCOAST PERSEUS	COGENT TWIST EX 96		
FR7533	BOMAZ EPISODE-ET	PED	GS	288	128	90	24	0	352	28	17	45	0.23	0.09	2.85	2.8	1.29	DENOVO 8084 ENTITY-ET	BOMAZ ALTAROBSON-ET	Sexed Only	✓
FR7824	PROGENESIS NAPAVALLEY	PED	GS	288	128	87	19	-3	423	26	19	45	0.16	0.07	2.39	2.03	1.91	SCHOENE-KUH ALTAROBERT-ET	PROGENESIS TOPNOTCH		✓
FR7910	(IG)BALLYELLY CHILLI	PED	GS	286	122	101	23	-2	571	19	23	42	-0.05	0.05	2.55	2.54	1.36	PEAK CHILTON-ET	BALLYCAIRN CORINTHIAN	Sexed	
FR7530	BOMAZ VADER-ET	PED	GS	275	152	59	20	-8	620	30	25	55	0.09	0.06	1.42	2.65	-0.81	DE-SU 14222 KENOBI-ET	BOMAZ ALTAROBSON-ET	Sexed Only	✓
FR7158	(IG)DOONMANAGH CHOPPER	PED	GS	273	128	80	10	9	470	20	22	42	0.03	0.09	2.08	1.85	1.68	LARS-ACRES SUPER NERD-ET	COOLNASOON ART		
FR6445	KOEPON RAPTOR	PED	GS	269	129	57	28	-4	422	27	19	46	0.18	0.07	2.85	2.39	1.58	PEAK ALTALAWSON-ET	BOMAZ ALTATOPSHOT-ET	Sexed	✓
FR4689	ABS JERONIMO-P-ET	PED	DP-INT	266	117	89	29	-1	223	25	15	40	0.27	0.12	2.92	2.58	1.04	ENDCO SUPERHERO-ET	VIEW-HOME POWERBALL-P-ET		✓
S3579	PROGENESIS WIMBLEDON	PED	DP-INT	262	133	84	22	-6	319	29	17	46	0.27	0.11	2.54	2.31	1.17	BOMAZ ALTAROBSON-ET	MR MOGUL DENVER 1426-ET		✓
FR7812	PROGENESIS BLACKTIE	PED	GS	257	139	72	17	-9	274	29	17	46	0.31	0.13	2.44	2.73	1.14	PEAK ALTALAWSON-ET	BACON-HILL PETY MODESTY-ET VG 86		✓
FR7905	(IG)BUNACLOY ALIBI	PED	GS	253	127	83	21	-3	375	27	18	45	0.2	0.09	2.29	2.66	1.8	VH PRASER	VIEW-HOME MONTEREY-ET	Sexed	
FR4187	WESTCOAST PERSEUS	PED	PROVEN	252	143	64	14	-3	667	23	26	49	-0.04	0.06	2.18	2.49	0.6	SANDY-VALLEY-I PENMANSHIP	VAL-BISSON DOORMAN EX 90	Sexed	✓
FR7806	WESTCOAST ROCKNROLL	PED	GS	251	138	70	29	-17	650	29	23	52	0.05	0.02	3.34	2.72	3.38	PROGENESIS PYRAMID	WESTCOAST ALCOVE		✓
FR8697	WESTCOAST MIDMARCH	PED	GS	250	119	78	30	-8	392	28	16	44	0.2	0.05	3.27	3.2	2.42	CLAYNOOK ZASBERILLA	S-S-I PR RENEGADE-ET	Sexed	✓
FR5599	DELTA BUILDER P	PED	DP-INT	244	98	89	28	-11	429	20	16	36	0.05	0.03	2.4	2.28	1.33	WEELDER ESPERANTO	VIEW-HOME POWERBALL-P-ET		✓
FR4688	DE-SU 14118 REGINALD-ET	PED	DP-INT	240	69	140	35	5	344	18	11	29	0.08	-0.02	2.71	2.37	2.82	WELCOME LEGENDARY 2870-ET	BACON-HILL MONTROSS-ET EX 92	Sexed Only	✓
S3655	PROGENESIS METALLICA	PED	GS	239	144	34	30	-8	491	29	22	51	0.15	0.09	3.07	3.01	1.19	PEAK ALTAEXPLOSION-ET	WESTCOAST GUARANTEE	Sexed	✓
FR6571	DENOVO 15551 SUBLIME-ET	PED	GS	237	102	52	31	-2	374	24	15	39	0.15	0.03	2.88	2.66	2.47	N-SPRINGHOPE HONDA-ET	DE-SU 13050 SPECTRE-ET	Sexed	✓
S3235	WESTCOAST GALAHAD	PED	DP-INT	237	102	78	27	-19	458	17	18	35	-0.01	0.04	3.07	2.77	1.88	SANDY-VALLEY-I PENMANSHIP	COYNE-FARMS JACEY CRI-ET		✓
	PROGENESIS PROTOCOL	PED	GS	235	127	52	23	-11	428	27	19	46	0.16	0.07	3.09	2.51	2.17	PINE-TREE-I PURSUIT	BOMAZ ALTAROBSON-ET		✓
FR6655	DENOVO 3159 GANDER-ET	PED	GS	223	125	41	20	-5	481	24	20	44	0.09	0.06	1.51	1.58	1.04	DENOVO 7947 GLITZ-ET	PINE-TREE VERONA-ET	Sexed Only	✓
S3440	DENOVO 7921 ATRIUM-ET	PED	DP-INT	219	113	51	17	0	447	29	16	45	0.19	0.01	2.22	2.17	1.89	ABS ACHIEVER-ET	MR MOGUL DELTA 1427-ET	Sexed Only	✓
FR4751	PROGENESIS MOOSE	PED	DP-INT	214	139	26	26	-10	599	31	22	53	0.13	0.02	3.17	2.7	2.39	SILVERRIDGE V EUGENIO	S-S-I PARTYROCK PROFIT-ET		✓
S3654	STANTONS ADORABLE	PED	DP-INT	214	103	62	18	-9	632	19	21	40	-0.09	-0.01	3.38	3.08	2.3	COGENT SUPERSHOT	DE-SU BKM MCCUTCHEN 1174-ET EX 93	Sexed	✓
S3572	WESTCOAST ALMAMATER	PED	GS	206	117	31	29	-10	572	23	21	44	0.01	0.02	2.94	2.66	2.26	WESTCOAST ALCOVE	IHG MONTANA-ET	Sexed	✓
FR7848	DELTA FOND PP-RED	PED	GS	205	100	56	19	2	261	19	14	33	0.15	0.09	1.94	1.64	1.49	DELTA MINGO P	MARS 4649		✓
FR6664	PROGENESIS REG	PED	GS	201	150	6	18	-11	528	28	24	52	0.12	0.09	3.04	2.97	1.92	PEAK ALTALAWSON-ET	PINE-TREE PROPHECY-ET		✓
S3462	SANDY-VALLEY I BATMAN-ET	PED	DP-INT	201	145	23	18	-8	469	29	22	51	0.18	0.09	2.21	2.47	0.83	SILVERRIDGE V IMAX	S-S-I MONTROSS JEDI-ET		✓
FR8694	COOKIECUTTER HOLYSMOKES-ET	PED	GS	197	158	-11	31	-8	673	32	26	58	0.09	0.05	3.36	3.45	1.45	AOT HIGHJUMP-ET	S-S-I PR RENEGADE-ET		✓
S3134	STANTONS APPLICABLE	PED	PROVEN	193	88	53	31	-19	395	18	15	33	0.04	0.02	4	3.38	3.44	SEAGULL-BAY SILVER-ET	DE-SU BKM MCCUTCHEN 1174-ET EX 93		✓
S3390	SANDY-VALLEY CHALLENGER-ET	PED	DP-INT	185	117	48	18	-8	632	30	19	49	0.08	-0.04	3.17	3.49	1.07	ENDCO SUPERHERO-ET	SEAGULL-BAY SILVER-ET		✓
FR8343	KOEPON OH RYDER RED	PED	GS	183	98	41	30	-7	626	22	18	40	-0.03	-0.05	3.96	4.02	2.44	HOOGERHORST DG OH RUBELS-RED	MR SALVATORE RC-ET		✓
FR4368	WESTCOAST YAMASKA	PED	PROVEN	181	133	14	19	-7	388	25	20	45	0.16	0.11	2.21	2.1	1.62	SANDY-VALLEY AFTERBURNER-ET	WOODCREST MOGUL YODER-ET	Sexed	✓
FR8223	PINE-TREE-I PURSUIT	PED	DP-INT	180	116	16	18	-8	615	24	21	45	-0.01	0	3.13	2.67	2.33	SILVERRIDGE V IMAX	S-S-I PARTYROCK PROFIT-ET	Sexed Only	✓
FR7566	3STAR OH RANGER RED-ET	PED	GS	161	117	2	30	-11	523	26	19	45	0.09	0.02	3.36	3.48	2.09	HOOGERHORST DG OH RUBELS-RED	MR SALVATORE RC-ET	Sexed Only	✓
S3261	K+L LZ CONAN PP-RED	PED	DP-INT	159	96	18	22	-2	341	16	16	32	0.04	0.07	1.64	1.88	0.15	RED ROCKS K+L LA SPEEDO	DE-SU 11236 BALISTO	Sexed	✓
FR6826	SHG RAINSTORM RED (DNK)	PED	GS	147	83	24	22	-2	453	18	15	33	0	-0.01	3	3.2	0.6	ENDCO ARGO RC-ET	EDG RUBICON-ET	Sexed Only	✓
S3537	STANTONS ALLIGATOR-ET	PED	DP-INT	140	88	18	18	-15	660	20	18	38	-0.09	-0.07	3.32	3.04	2.44	MORNINGVIEW MCC KINGBOY-ET	DE-SU BKM MCCUTCHEN 1174-ET EX 93		✓
S3528	WESTCOAST ALCOVE	PED	DP-INT	123	143	-53	13	-12	756	32	25	57	0.04	-0.02	2.51	2.45	1.96	S-S-I MONTROSS DUKE-ET	SEAGULL-BAY MVP-ET		✓
	KINGS-RANSOM DROPBOX-ET	PED	GS	123	111	-31	30	-15	410	24	17	41	0.13	0.04	4.1	4.23	1.17	AOT HIGHJUMP-ET	CLAYNOOK CASPER-ET		✓
S3806	HOOGERHORST DG OH RUBELS-RED	PED	GS	123	104	-15	30	-7	572	23	18	41	0.01	-0.02	2.84	3.21	1.67	ENDCO ARGO RC-ET	EDG RUBICON-ET	Sexed Only	✓
S3619	CLAYNOOK BAROLO SG	PED	GS	122	99	3	29	-13	450	21	16	37	0.06	0.02	4.11	4.08	1.43	WALNUTLAWN SIDEKICK	BOLDI ANDRE		✓
S1488	VAL-BISSON DOORMAN	PED	PROVEN	122	76	13	25	-8	345	13	14	27	0	0.03	2.52	2.36	1.73	DE-SU 521 BOOKEM-ET	PICSTON SHOTTLE EX 96		✓
FR4419	WALNUTLAWN SIDEKICK	PED	DP-INT	90	70	-9	21	-11	187	15	9	24	0.13	0.05	3.8	3.33	2.72	WILLSBRO ABBOTT	DE-SU BKM MCCUTCHEN 1174-ET EX 93	Sexed	✓
	COMESTAR LEMAGIC	PED	GS	73	60	-10	22	-8	527	14	14	28	-0.12	-0.07	2.94	2.67	2.03	STANTONS CHIEF-ET	MONUMENT IMPRESSION-ET		✓
S3311	STONE-FRONT ARTIST-ET	PED	DP-INT	69	64	-28	29	-16	530	12	15	27	-0.14	-0.05	3.12	3.05	1.1	MAVERICK CRUSH	DE-SU BKM MCCUTCHEN 1174-ET	Sexed Only	✓
FR4734	OH-RIVER-SYC CRUSHABULL-ET	PED	DP-INT	36	50	-15	22	-8	420	9	12	21	-0.12	-0.04	4.29	4.02	2.4	MAVERICK CRUSH	MOUNTFIELD SSI DCY MOGUL-ET	Sexed	✓
S3751	AUDIBEL JORDAN ET (Jersey)		GS	115	53	53	9	72	-333	12	0	12	0.46	0.2	2.67	1.35	4.12	VERJATIN WESTSTAR ET	HAWARDEN IMPULS PREMIER	Sexed	✓
S3148	FDL BARCELONA (Jersey)		DP-INT	73	62	8	-4	70	-213	13	3	16	0.38	0.18	1.56	0.51	2.94	JARS OF CLAY BARNABAS	HAWARDEN IMPULS PREMIER		✓
S2297	GUIMO JOEL ET (Jersey)		DP-INT	18	-6	15	4	73	-561	-1	-9	-10	0.37	0.19	2.92	1.83	3.84	TOLLENAARS IMPULS LEGAL 233-ET	ROCK ELLA PARAMOUNT-ET		✓

FR6571 DEVO 15551 SUBLIME-ET

PED

Date of Birth:
24/12/2018

HO 100% | Beta Casein:
A2/A2 | aAa
423

Herd Book Number:
HOL840M003204164789

Dam: Seagull-Bay Spectr Sandy-ET VG



SCAN QR CODE
FOR MOST
RECENT PROOF



HEALTH



HIGH
TYPE
SIRE



SEXED
SEMEN



A2

EBI OCT. 22 SOURCE ICBF		REL
EBI	237	57%
Prod. SI	102	73%
Fert. SI	52	45%
Calv. SI	57	79%
Beef. SI	-6	34%
Maint. SI	-2	33%
Mgmt. SI	3	55%
Health SI	31	62%

USA AUG 22			
TPI		2745	
PRODUCTION			
Milk Lbs	223	Daus	-
Fat Lbs	72	Fat %	0.22
Protein Lbs	32	Protein %	0.09
OTHER TRAITS			
DPR	1.8		
Productive Life	4.4		
SCC	2.76		
TYPE			
PTAT	0.83		
Udder Composite	1.24		
Feet & Legs Composite	0.6		
BCS	-0.48		

LINEAR EVALUATION - INTERBULL 2022		-2	+2
STATURE	1.02	[Progress bar]	
CHEST WIDTH	-1.49	[Progress bar]	
BODY DEPTH	0.05	[Progress bar]	
ANGULARITY	1.11	[Progress bar]	
RUMP ANGLE	3.08	[Progress bar]	
RUMP WIDTH	-0.29	[Progress bar]	
REAR LEG SET	-1.45	[Progress bar]	
LOCOMOTION	2.32	[Progress bar]	
FOOT ANGLE	1.75	[Progress bar]	
FORE UDDER	3.22	[Progress bar]	
REAR UDDER	3	[Progress bar]	
UDDER SUPPORT	2.48	[Progress bar]	
UDDER DEPTH	3.28	[Progress bar]	
TEAT PLACEMENT	0.34	[Progress bar]	
TEAT LENGTH	-3.87	[Progress bar]	
BCS	-0.8	[Progress bar]	
OVERALL TYPE	2.88	[Progress bar]	
OVERALL UDDER	2.66	[Progress bar]	
OVERALL F&L	2.47	[Progress bar]	

PRODUCTION					
Milk Kg	Fat Kg	Protein KG	Solid Kg	Fat %	Prot %
374	24	15	39	0.15	0.03

FERTILITY		CALVING DIFFICULTY					
Calving Interval	Survival	Records	Dairy	Heifer	Diff	Rel	Risk
-2.4	1.8	151	4.3	78		Low	

MANAGEMENT		HEALTH				DTRS
Milk Speed	Temp	SCC	Mastitis	Lamness	TB	0
-23.4	-0.12	-0.23	-0.15	-0.12	8.8	0

- Low stature sire
- Very High Health SI & A2/A2
- Easy Calving

SIRE: N-SPRINGHOPE HONDA-ET

MS: DE-SU 13050 SPECTRE-ET

MGS: MR MOGUL DELTA 1427-ET

DAM: SEAGULL-BAY SPECTR SANDY-ET

MD: TRES-REYNAS DELTA 152-ET

MGD: TRES-REYNAS SS LIZZY-ET

PROGENESIS PROTOCOL

PED

Date of Birth:
28/05/2019

HO 100% | Beta Casein:
A1/A1 | aAa

Herd Book Number:
HOLCANM000013353890

NEW



SCAN QR CODE
FOR MOST
RECENT PROOF



EBI OCT. 22 SOURCE ICBF		REL
EBI	235	54%
Prod. SI	127	74%
Fert. SI	52	44%
Calv. SI	51	45%
Beef. SI	-6	34%
Maint. SI	-11	32%
Mgmt. SI	-1	59%
Health SI	23	66%

USA AUG 22			
TPI		2827	
PRODUCTION			
Milk Lbs	264	Daus	-
Fat Lbs	83	Fat %	0.26
Protein Lbs	42	Protein %	0.12
OTHER TRAITS			
DPR	0.4		
Productive Life	4.8		
SCC	2.75		
TYPE			
PTAT	1.05		
Udder Composite	0.76		
Feet & Legs Composite	1.17		
BCS	1.12		

LINEAR EVALUATION - INTERBULL 2022			
		-2	+2
STATURE	2.08	[Progress bar]	
CHEST WIDTH	1.08	[Progress bar]	
BODY DEPTH	0.88	[Progress bar]	
ANGULARITY	0.66	[Progress bar]	
RUMP ANGLE	-0.9	[Progress bar]	
RUMP WIDTH	4.02	[Progress bar]	
REAR LEG SET	-0.45	[Progress bar]	
LOCOMOTION	3.38	[Progress bar]	
FOOT ANGLE	1.26	[Progress bar]	
FORE UDDER	3.81	[Progress bar]	
REAR UDDER	3.09	[Progress bar]	
UDDER SUPPORT	1.3	[Progress bar]	
UDDER DEPTH	3.49	[Progress bar]	
TEAT PLACEMENT	0.16	[Progress bar]	
TEAT LENGTH	2.34	[Progress bar]	
BCS	0.91	[Progress bar]	
OVERALL TYPE	3.09	[Progress bar]	
OVERALL UDDER	2.51	[Progress bar]	
OVERALL F&L	2.17	[Progress bar]	

PRODUCTION					
Milk Kg	Fat Kg	Protein KG	Solid Kg	Fat %	Prot %
428	27	19	46	0.16	0.07

FERTILITY		CALVING DIFFICULTY			
Calving Interval	Survival	Records	Dairy	Heifer	Diff
-2.7	1.42	0	6.82	52	Moderate

MANAGEMENT		HEALTH				DTRS
Milk Speed	Temp	SCC	Mastitis	Lamness	TB	0
-23.8	0.22	-0.24	-0.11	-0.05	8.26	0

- **3.1 on Overall Type**
- **Great BCS and SCC**
- **Percentages Improver**

SIRE: PINE-TREE-I PURSUIT

MS: BOMAZ ALTAROBSON-ET

MGS: SEAGULL-BAY SILVER-ET

DAM: PROGENESIS ALTAROBSON BEYONCE

MD: PROGENESIS SILVER BIONCA VG 85

MGD: PES009 SUPERSIRE BREANNE

FR7848 DELTA FOND PP-RED

PED

Date of Birth:
25/08/2019

HO 100% | Beta Casein: aAa

Herd Book Number:
HOLNLDM000623636125

Dam



Alger Meekma



SCAN QR CODE
FOR MOST
RECENT PROOF



EBI OCT. 22 SOURCE ICBF REL	
EBI	205 50%
Prod. SI	100 70%
Fert. SI	56 38%
Calv. SI	46 46%
Beef. SI	-15 32%
Maint. SI	2 31%
Mgmt. SI	-3 52%
Health SI	19 58%

USA AUG 22	
TPI	2359
PRODUCTION	
Milk Lbs	-396 Daus -
Fat Lbs	32 Fat % 0.17
Protein Lbs	21 Protein % 0.12
OTHER TRAITS	
DPR	1.4
Productive Life	4.6
SCC	2.85
TYPE	
PTAT	-0.44
Udder Composite	-0.3
Feet & Legs Composite	0.74
BCS	0.11

LINEAR EVALUATION - INTERBULL 2022

		-2	+2
STATURE	0.67	[Progress bar]	
CHEST WIDTH	1.21	[Progress bar]	
BODY DEPTH	1.27	[Progress bar]	
ANGULARITY	0.23	[Progress bar]	
RUMP ANGLE	3.11	[Progress bar]	
RUMP WIDTH	0.44	[Progress bar]	
REAR LEG SET	-0.71	[Progress bar]	
LOCOMOTION	1.86	[Progress bar]	
FOOT ANGLE	0.24	[Progress bar]	
FORE UDDER	2.02	[Progress bar]	
REAR UDDER	1.29	[Progress bar]	
UDDER SUPPORT	-0.54	[Progress bar]	
UDDER DEPTH	1.41	[Progress bar]	
TEAT PLACEMENT	-0.18	[Progress bar]	
TEAT LENGTH	0.38	[Progress bar]	
BCS	1.2	[Progress bar]	
OVERALL TYPE	1.94	[Progress bar]	
OVERALL UDDER	1.64	[Progress bar]	
OVERALL F&L	1.49	[Progress bar]	

PRODUCTION					
Milk Kg	Fat Kg	Protein KG	Solid Kg	Fat %	Prot %
261	19	14	33	0.15	0.09

FERTILITY		CALVING DIFFICULTY			
Calving Interval	Survival	Records	Dairy	Heifer	Diff
-2.9	1.6	0	4.8	42	Low

MANAGEMENT		HEALTH				DTRS
Milk Speed	Temp	SCC	Mastitis	Lamness	TB	0
-6.1	-0.13	-0.18	-0.09	-0.05	6.5	0

- **Homozygous Polled - All Progeny Polled**
- **Red and breeds cows with Strength**
- **SCC improver**

SIRE: DELTA MINGO P	MS: MARS 4649	MGS: MOLENKAMP BOLT
DAM: HORST DELTA JIMKE P	MD: HEDRA DELTA JONKA	MGD: DELTA JARIMA BY

PRE-ORDER

PROVEN

S3261 K+L LZ CONAN PP-RED

PED

Date of Birth:
20/11/2016

HO 100% | Beta Casein: A1/A2 | aAa

Herd Book Number:
HOLNLDM000664428633

RED
POLLED



Candleligh VG86 MD



SCAN QR CODE FOR MOST RECENT PROOF



HEALTH



EASY CALVING SIRE



SEXED SEMEN

EBI OCT. 22 SOURCE ICBF		REL
EBI	159	78%
Prod. SI	96	94%
Fert. SI	18	68%
Calv. SI	40	87%
Beef. SI	-11	84%
Maint. SI	-2	51%
Mgmt. SI	-5	62%
Health SI	22	71%

USA AUG 22			
TPI		2546	
PRODUCTION			
Milk Lbs	232	Daus	-
Fat Lbs	35	Fat %	0.09
Protein Lbs	34	Protein %	0.09
OTHER TRAITS			
DPR	1.6		
Productive Life	5.9		
SCC	2.71		
TYPE			
PTAT	0.1		
Udder Composite	0.12		
Feet & Legs Composite	-0.16		
BCS	-0.98		

LINEAR EVALUATION - INTERBULL 2022			
		-2	+2
STATURE	1.65	[Progress bar]	
CHEST WIDTH	-1.2	[Progress bar]	
BODY DEPTH	0.21	[Progress bar]	
ANGULARITY	1.23	[Progress bar]	
RUMP ANGLE	-0.56	[Progress bar]	
RUMP WIDTH	0.43	[Progress bar]	
REAR LEG SET	-0.15	[Progress bar]	
LOCOMOTION	-0.3	[Progress bar]	
FOOT ANGLE	0.4	[Progress bar]	
FORE UDDER	2.11	[Progress bar]	
REAR UDDER	2.14	[Progress bar]	
UDDER SUPPORT	0.57	[Progress bar]	
UDDER DEPTH	2.35	[Progress bar]	
TEAT PLACEMENT	1.26	[Progress bar]	
TEAT LENGTH	-1.81	[Progress bar]	
BCS	-0.9	[Progress bar]	
OVERALL TYPE	1.64	[Progress bar]	
OVERALL UDDER	1.88	[Progress bar]	
OVERALL F&L	0.15	[Progress bar]	

PRODUCTION					
Milk Kg	Fat Kg	Protein KG	Solid Kg	Fat %	Prot %
341	16	16	32	0.04	0.07

FERTILITY		CALVING DIFFICULTY			
Calving Interval	Survival	Records	Dairy Heifer Diff	Rel	Risk
0.4	1.8	626	6	88	Low

MANAGEMENT		HEALTH				DTRS
Milk Speed	Temp	SCC	Mastitis	Lamness	TB	105
2.4	-0.12	-0.21	-0.1	-0.07	6.3	HERDS 44

- Red and Heterozygous Polled
- Easy Calving for Heifers
- Average Calving Interval of Daughters is 356 days

SIRE: RED ROCKS K+L LA SPEEDO	MS: DE-SU 11236 BALISTO	MGS: AGGRAVATION LAWN BOY P-RED EX 93
DAM: K+L BL CANDLE P	MD: CANDLELIGH VG 86	MGD: RI-VAL-RE SHTLE CARALIE-ET

FR8343 KOEPON OH RYDER RED

PED

Date of Birth:
24/11/2019

HO 100% | Beta Casein: aAa

Herd Book Number:
HOLNLDM000571815588



DAM: Lakeside Ups RED RANGE VG85



SCAN QR CODE FOR MOST RECENT PROOF



EBI OCT. 22 SOURCE ICBF		REL
EBI	183	51%
Prod. SI	98	69%
Fert. SI	41	39%
Calv. SI	38	48%
Beef. SI	-8	34%
Maint. SI	-7	33%
Mgmt. SI	-10	59%
Health SI	30	65%

USA AUG 22			
TPI		2635	
PRODUCTION			
Milk Lbs	886	Daus	-
Fat Lbs	56	Fat %	0.08
Protein Lbs	31	Protein %	0.01
OTHER TRAITS			
DPR	0		
Productive Life	5		
SCC	3		
TYPE			
PTAT	1.18		
Udder Composite	1.8		
Feet & Legs Composite	0.43		
BCS	-1.65		

LINEAR EVALUATION - INTERBULL 2022

		-2	+2
STATURE	2.03	[Progress bar]	
CHEST WIDTH	0.03	[Progress bar]	
BODY DEPTH	0.67	[Progress bar]	
ANGULARITY	1.54	[Progress bar]	
RUMP ANGLE	1.45	[Progress bar]	
RUMP WIDTH	1.89	[Progress bar]	
REAR LEG SET	0.69	[Progress bar]	
LOCOMOTION	2.69	[Progress bar]	
FOOT ANGLE	1.57	[Progress bar]	
FORE UDDER	4.52	[Progress bar]	
REAR UDDER	4.82	[Progress bar]	
UDDER SUPPORT	2.95	[Progress bar]	
UDDER DEPTH	3.28	[Progress bar]	
TEAT PLACEMENT	1.77	[Progress bar]	
TEAT LENGTH	1.85	[Progress bar]	
BCS	-0.4	[Progress bar]	
OVERALL TYPE	3.96	[Progress bar]	
OVERALL UDDER	4.02	[Progress bar]	
OVERALL F&L	2.44	[Progress bar]	

PRODUCTION					
Milk Kg	Fat Kg	Protein KG	Solid Kg	Fat %	Prot %
626	22	18	40	-0.03	-0.05

FERTILITY		CALVING DIFFICULTY			
Calving Interval	Survival	Records	Dairy	Heifer	Diff
-1.1	2.2	0	7.5	52	Moderate

MANAGEMENT		HEALTH				DTRS
Milk Speed	Temp	SCC	Mastitis	Lamness	TB	0
-15.5	-0.4	-0.3	-0.14	-0.08	7	0

- Incredible Overall Udder Score: 4.02
- Rubels son from Hiawatha Cow Family
- Huge Production

SIRE: HOOGERHORST DG OH RUBELS-RED

MS: MR SALVATORE RC-ET

MGS: EDG RUBICON-ET

DAM: LAKESIDE UPS RED RANGE

MD: DE OOSTERHOF DG ROSE D

MGD: TELGTER AIKMAN DOREEN

FR7566 3STAR OH RANGER RED-ET

PED

Date of Birth:
27/01/2020

HO 100%

Beta Casein:
A1/A2

aAa
432516

Herd Book Number:
HOLNLDM000688600952

RED



SEMEX

3STAR OH RANGER RED-ET
©giorgiosoldi.it



SCAN QR CODE
FOR MOST
RECENT PROOF



EBI OCT. 22 SOURCE ICBF		REL
EBI	161	51%
Prod. SI	117	69%
Fert. SI	2	39%
Calv. SI	30	49%
Beef. SI	-4	34%
Maint. SI	-11	33%
Mgmt. SI	-3	59%
Health SI	30	66%

USA AUG 22	
TPI	2893
PRODUCTION	
Milk Lbs	805
Fat Lbs	72
Protein Lbs	40
OTHER TRAITS	
DPR	0.2
Productive Life	6.9
SCC	2.61
TYPE	
PTAT	1.69
Udder Composite	1.56
Feet & Legs Composite	1.19
BCS	-0.08

LINEAR EVALUATION - INTERBULL 2022	
STATURE	2.07
CHEST WIDTH	-0.53
BODY DEPTH	1.1
ANGULARITY	1.97
RUMP ANGLE	0.32
RUMP WIDTH	1.72
REAR LEG SET	1.85
LOCOMOTION	2.45
FOOT ANGLE	1.25
FORE UDDER	4.75
REAR UDDER	3.68
UDDER SUPPORT	1.45
UDDER DEPTH	3.05
TEAT PLACEMENT	1.58
TEAT LENGTH	0.88
BCS	-1.2
OVERALL TYPE	3.36
OVERALL UDDER	3.48
OVERALL F&L	2.09

PRODUCTION					
Milk Kg	Fat Kg	Protein KG	Solid Kg	Fat %	Prot %
523	26	19	45	0.09	0.02

FERTILITY		CALVING DIFFICULTY			
Calving Interval	Survival	Records	Dairy	Heifer	Diff
1.2	1.3	0	9.6	51	High

MANAGEMENT		HEALTH				DTRS
Milk Speed	Temp	SCC	Mastitis	Lamness	TB	0
-31.8	-0.35	-0.25	-0.15	-0.09	6.2	0

- **Limited Supply**
- **Full brother to Ryder Red**
- **Holstein International Red Impact Cow of the Year 2022**

SIRE: HOOGERHORST DG OH RUBELS-RED

MS: MR SALVATORE RC-ET

MGS: EDG RUBICON-ET

DAM: LAKESIDE UPS RED RANGE

MD: DE OOSTERHOF DG ROSE D

MGD: TELGTER AIKMAN DOREEN

FR6826 SHG RAINSTORM RED (DNK)

PED

Date of Birth:
04/12/2018

HO 100% | Beta Casein: A1/A2 | aAa

Herd Book Number:
HOLDNKM005176304842

Rainstorm



SCAN QR CODE FOR MOST RECENT PROOF



HEALTH



SEXED ONLY

EBI OCT. 22 SOURCE ICBF		REL
EBI	147	59%
Prod. SI	83	75%
Fert. SI	24	48%
Calv. SI	37	70%
Beef. SI	-14	41%
Maint. SI	-2	37%
Mgmt. SI	-2	60%
Health SI	22	68%

USA AUG 22			
TPI		2615	
PRODUCTION			
Milk Lbs	481	Daus	-
Fat Lbs	55	Fat %	0.13
Protein Lbs	34	Protein %	0.07
OTHER TRAITS			
DPR	-0.4		
Productive Life	3.6		
SCC	2.8		
TYPE			
PTAT	1.12		
Udder Composite	1.4		
Feet & Legs Composite	0.61		
BCS	-0.51		

LINEAR EVALUATION - INTERBULL 2022

		-2	+2
STATURE	1.37	[Progress bar]	
CHEST WIDTH	-2.16	[Progress bar]	
BODY DEPTH	-0.86	[Progress bar]	
ANGULARITY	1.23	[Progress bar]	
RUMP ANGLE	-2.33	[Progress bar]	
RUMP WIDTH	1.42	[Progress bar]	
REAR LEG SET	0.71	[Progress bar]	
LOCOMOTION	2.1	[Progress bar]	
FOOT ANGLE	0.06	[Progress bar]	
FORE UDDER	3.34	[Progress bar]	
REAR UDDER	4.27	[Progress bar]	
UDDER SUPPORT	3.18	[Progress bar]	
UDDER DEPTH	3.1	[Progress bar]	
TEAT PLACEMENT	2.4	[Progress bar]	
TEAT LENGTH	0.77	[Progress bar]	
BCS	-1.3	[Progress bar]	
OVERALL TYPE	3	[Progress bar]	
OVERALL UDDER	3.2	[Progress bar]	
OVERALL F&L	0.6	[Progress bar]	

PRODUCTION					
Milk Kg	Fat Kg	Protein KG	Solid Kg	Fat %	Prot %
453	18	15	33	0	-0.01

FERTILITY		CALVING DIFFICULTY			
Calving Interval	Survival	Records	Dairy	Heifer	Diff
-0.5	1.4	57	5.3	65	Low

MANAGEMENT		HEALTH				DTRS
Milk Speed	Temp	SCC	Mastitis	Lamness	TB	0
-26.8	-0.28	-0.2	-0.09	-0.08	7.4	0

- Average sized robust cows
- Very High Health SI
- Same family as Ranger Red

SIRE: ENDCO ARGO RC-ET

MS: EDG RUBICON-ET

MGS: GEN-I-BEQ AIKMAN VG 86

DAM: DE OOSTERHOF DG ROSE D

MD: TELGTER AIKMAN DOREEN

MGD: HOLBRA MAA

S3806 HOOGERHORST DG OH RUBELS-RED PED

RED

Date of Birth:
20/01/2018

HO 100% | Beta Casein:
A1/A2 | aAa

Herd Book Number:
HOLNLDM000679520401

Daughter: Logan Rubels Seisme-2yrs, VG87



SCAN QR CODE
FOR MOST
RECENT PROOF



MILK SOLIDS



HEALTH



HIGH TYPE SIRE



SEXED ONLY



ROBOT READY

EBI OCT. 22 SOURCE ICBF		REL
EBI	123	56%
Prod. SI	104	73%
Fert. SI	-15	47%
Calv. SI	23	56%
Beef. SI	-12	41%
Maint. SI	-7	37%
Mgmt. SI	1	59%
Health SI	30	67%

USA AUG 22	
TPI	2730
PRODUCTION	
Milk Lbs	968
Fat Lbs	70
Protein Lbs	46
Daus	-
Fat %	0.11
Protein %	0.05
OTHER TRAITS	
DPR	-1.7
Productive Life	3.8
SCC	2.81
TYPE	
PTAT	1.83
Udder Composite	1.65
Feet & Legs Composite	1.14
BCS	-0.07

LINEAR EVALUATION - INTERBULL 2022	
STATURE	2.01
CHEST WIDTH	-0.15
BODY DEPTH	1.54
ANGULARITY	2.36
RUMP ANGLE	-0.26
RUMP WIDTH	3.77
REAR LEG SET	3.18
LOCOMOTION	2.82
FOOT ANGLE	-0.11
FORE UDDER	3.92
REAR UDDER	3.79
UDDER SUPPORT	1.44
UDDER DEPTH	3.18
TEAT PLACEMENT	1.3
TEAT LENGTH	0.54
BCS	-2.1
OVERALL TYPE	2.84
OVERALL UDDER	3.21
OVERALL F&L	1.67

PRODUCTION					
Milk Kg	Fat Kg	Protein KG	Solid Kg	Fat %	Prot %
572	23	18	41	0.01	-0.02

FERTILITY		CALVING DIFFICULTY			
Calving Interval	Survival	Records	Dairy	Heifer	Diff
2.3	1.1	0	9.8	56	High

MANAGEMENT		HEALTH				DTRS
Milk Speed	Temp	SCC	Mastitis	Lamness	TB	0
-33.2	-0.25	-0.25	-0.13	-0.11	6.3	0

- One of World's Top Red Sire
- High Production with good conformation
- Very High Health SI

SIRE: ENDCO ARGO RC-ET

MS: EDG RUBICON-ET

MGS: GEN-I-BEQ AIKMAN VG 86

DAM: DE OOSTERHOF DG RUBELLIA

MD: DE OOSTERHOF DG AI ELANI

MGD: ELAINE

PRE-ORDER

GENOMIC

PRE-ORDER

PROVEN

S3619 CLAYNOOK BAROLO SG PED

Date of Birth: 29/10/2018 Herd Book Number: HOLCHEM120143618749

HO 100% | Beta Casein: A1/A2 | aAa: 234165



GDam Claynook Divinity Unix

FR4419 WALNUTLAWN SIDEKICK PED

Date of Birth: 14/07/2016 Herd Book Number: HOLCANM000012508113

HO 100% | Beta Casein: A2/A2 | aAa: 312546

Sidekick Daughter - Evening Sidekick Jennifer



SCAN QR CODE FOR MOST RECENT PROOF



SCAN QR CODE FOR MOST RECENT PROOF



EBI OCT. 22 SOURCE ICBF	REL	LINEAR EVALUATION - INTERBULL 2022	
EBI 122	58%	STATURE	2.93
Prod. SI 99	73%	CHEST WIDTH	-0.83
Fert. SI 3	46%	BODY DEPTH	1.04
Calv. SI 11	73%	ANGULARITY	2.09
Beef. SI -9	39%	RUMP ANGLE	-0.16
Maint. SI -13	36%	RUMP WIDTH	4.08
Mgmt. SI 3	60%	REAR LEG SET	2.64
Health SI 29	68%	LOCOMOTION	1.63
		FOOT ANGLE	-0.12
		FORE UDDER	5.3
		REAR UDDER	4.88
		UDDER SUPPORT	4.89
		UDDER DEPTH	4.81
		TEAT PLACEMENT	2.77
		TEAT LENGTH	-1.61
		BCS	-1.4
		OVERALL TYPE	4.11
		OVERALL UDDER	4.08
		OVERALL F&L	1.43

EBI OCT. 22 SOURCE ICBF	REL	LINEAR EVALUATION - INTERBULL 2022	
EBI 90	80%	STATURE	2.74
Prod. SI 70	94%	CHEST WIDTH	0.84
Fert. SI -9	79%	BODY DEPTH	2.4
Calv. SI 27	84%	ANGULARITY	2.03
Beef. SI -12	67%	RUMP ANGLE	-0.79
Maint. SI -11	49%	RUMP WIDTH	2.96
Mgmt. SI 4	59%	REAR LEG SET	-0.1
Health SI 21	73%	LOCOMOTION	3.06
		FOOT ANGLE	1.73
		FORE UDDER	5.6
		REAR UDDER	3.88
		UDDER SUPPORT	3.42
		UDDER DEPTH	4.62
		TEAT PLACEMENT	2.35
		TEAT LENGTH	-0.21
		BCS	-0.4
		OVERALL TYPE	3.8
		OVERALL UDDER	3.33
		OVERALL F&L	2.72

PRODUCTION					
Milk Kg	Fat Kg	Protein KG	Solid Kg	Fat %	Prot %
450	21	16	37	0.06	0.02

FERTILITY		CALVING DIFFICULTY			
Calving Interval	Survival	Records	Dairy Heifer Diff	Rel	Risk
0.9	1.1	46	10	62	High

MANAGEMENT		HEALTH				DTRS
Milk Speed	Temp	SCC	Mastitis	Lamness	TB	0
-30.4	-0.18	-0.26	-0.13	-0.1	8.9	HERDS: 0

PRODUCTION					
Milk Kg	Fat Kg	Protein KG	Solid Kg	Fat %	Prot %
187	15	9	24	0.13	0.05

FERTILITY		CALVING DIFFICULTY			
Calving Interval	Survival	Records	Dairy Heifer Diff	Rel	Risk
1.5	0.8	301	7.4	86	Moderate

MANAGEMENT		HEALTH				DTRS
Milk Speed	Temp	SCC	Mastitis	Lamness	TB	54
-20	-0.06	-0.1	-0.11	-0.1	7.4	HERDS: 26

- Exceptional Overall Udder Score: 4.08
- Very High Health SI
- Excellent Overall Type Score: 4.11

- Very High Health SI
- Great Percentages
- Superb Overall Udder Score: 3.33

SIRE: WALNUTLAWN SIDEKICK	MS: BOLDI ANDRE	MGS: CROTEAU LESPERRON UNIX EX 96
DAM: CLAYOK DISHY ANDRE	MD: CLAYOK DIVINITY UNIX	MGD: CLAYOK DAWNETTE HUNTER

SIRE: WILLSBRO ABBOTT	MS: DE-SU BKM MCCUTCHEM 1174-ET EX 93	MGS: COMESTAR LAVANGUARD
DAM: WALNUTLAWN MCCUTCHEM SUMMER	MD: MISTY SPRINGS LAVANGUARD SUE	MGD: MISTY SPRINGS FBI SUZANNE

PRE-ORDER

GENOMIC

COMESTAR LEMAGIC

PED

Date of Birth:
24/01/2021

Herd Book Number:
HOLCANM000120461050

HO 100% | Beta Casein: A2/A2 | aAa 432615

NEW



SEMEX



SCAN QR CODE FOR MOST RECENT PROOF



HEALTH



HIGH TYPE SIRE



A2 A2

EBI OCT. 22 SOURCE ICBF		REL	LINEAR EVALUATION - INTERBULL 2022	
EBI	73	27%	STATURE	2.31
Prod. SI	60	30%	CHEST WIDTH	0.14
Fert. SI	-10	30%	BODY DEPTH	0.74
Calv. SI	11	27%	ANGULARITY	0.94
Beef. SI	-2	19%	RUMP ANGLE	0.93
Maint. SI	-8	18%	RUMP WIDTH	2.3
Mgmt. SI	0	19%	REAR LEG SET	-0.96
Health SI	22	25%	LOCOMOTION	2.3
			FOOT ANGLE	1.65
			FORE UDDER	3.81
			REAR UDDER	3.48
			UDDER SUPPORT	2.35
			UDDER DEPTH	3.47
			TEAT PLACEMENT	1.79
			TEAT LENGTH	-0.66
			BCS	-0.1
			OVERALL TYPE	2.94
			OVERALL UDDER	2.67
			OVERALL F&L	2.03

PRODUCTION					
Milk Kg	Fat Kg	Protein KG	Solid Kg	Fat %	Prot %
527	14	14	28	-0.12	-0.07

FERTILITY		CALVING DIFFICULTY			
Calving Interval	Survival	Records	Dairy Heifer Diff	Rel	Risk
1.56	0.78	0	9.37	25	High

MANAGEMENT		HEALTH				DTRS
Milk Speed	Temp	SCC	Mastitis	Lamness	TB	0
-12.04	-0.1	-0.23	-0.11	-0.04	#N/A	HERDS 0

- #1 Conf Chief son
- A2/A2 Sire
- Over 2.9+ on Overall Type and Udders

SIRE: STANTONS CHIEF-ET	MS: MONUMENT IMPRESSION-ET	MGS: VAL-BISSON DOORMAN
DAM: COMESTAR LAMAGIC IMPRESSIONE	MD: COMESTAR LAMADONA DOORMAN	MGD: COMESTAR LAUTAMAI MAN O MANeVG 87

PRE-ORDER

PROVEN

FR4734 OH-RIVER-SYC CRUSHABULL-ET

PED

Date of Birth:
10/03/2017

Herd Book Number:
HOL840M003135145001

HO 100% | Beta Casein: A1/A2 | aAa 324165

Dam: Oh-River-Syc Mogal Brylan



SEMEX



SCAN QR CODE FOR MOST RECENT PROOF



HEALTH



SEXED SEMEN

EBI OCT. 22 SOURCE ICBF		REL	LINEAR EVALUATION - INTERBULL 2022	
EBI	36	77%	STATURE	2.74
Prod. SI	50	95%	CHEST WIDTH	-2.41
Fert. SI	-15	76%	BODY DEPTH	1.81
Calv. SI	4	78%	ANGULARITY	2.59
Beef. SI	-23	56%	RUMP ANGLE	-0.24
Maint. SI	-8	41%	RUMP WIDTH	2.32
Mgmt. SI	6	59%	REAR LEG SET	2.28
Health SI	22	71%	LOCOMOTION	3.54
			FOOT ANGLE	-0.42
			FORE UDDER	5.49
			REAR UDDER	5.17
			UDDER SUPPORT	3.22
			UDDER DEPTH	3.76
			TEAT PLACEMENT	3.82
			TEAT LENGTH	-1.01
			BCS	-2.5
			OVERALL TYPE	4.29
			OVERALL UDDER	4.02
			OVERALL F&L	2.4

PRODUCTION					
Milk Kg	Fat Kg	Protein KG	Solid Kg	Fat %	Prot %
420	9	12	21	-0.12	-0.04

FERTILITY		CALVING DIFFICULTY			
Calving Interval	Survival	Records	Dairy Heifer Diff	Rel	Risk
3.7	2.6	97	11.4	76	High

MANAGEMENT		HEALTH				DTRS
Milk Speed	Temp	SCC	Mastitis	Lamness	TB	26
-28.2	-0.07	-0.17	-0.11	-0.07	6.6	HERDS 17

- Very High Health SI
- Exceptional Overall Udder Score: 4.02
- Excellent Overall Type Score: 4.29

SIRE: MAVERICK CRUSH	MS: MOUNTFIELD SSI DCY MOGUL-ET	MGS: SULLY HART MERIDIAN-ET
DAM: OH-RIVER-SYC MOGAL BRYLAN	MD: OH-RIVER-SYC MRDN BILLIE-ET	MGD: SANDY-VALLEY ATWD BARBIE-ET

SHOWSTOPPER

BEEF FOR THE DAIRY HERD

SECURITY OF CALVING EASE 

SHORT GESTATION 

COMMERCIAL BEEF VALUE MAXIMISED €€€ 



COMMERCIAL BEEF VALUE (CBV)

Commercial Beef Value is a new Index designed to aid beef farmers to establish the genetic potential of commercial animals from a beef finishing point of view and therefore the commercial value to them.

It includes: Carcass Weight, Carcass Conformation, Carcass Fat, Docility and Feed Intake.

Progeny from the dairy herd with a high CBV will be more attractive to the calf/store buyer.

To maximise the CBV of your dairyX calves, use sires high in Beef Sub-Index.

HOW TO PRODUCE BEEF CALVES WITH MAXIMUM COMMERCIAL BEEF VALUE

Select appropriate sires for your Maidens, 2nd Calvers, Cows and Mature Cows as outlined below.

Then select sires with the highest Beef Sub-Index within your calving range.

PROVEN ANGUS SIRES FOR MAIDENS - SAFE CHOICE FOR CALVING EASE

FEATURING

INTELAGRI MATTEO (AA4089): NO. 1 Fully proven Angus for Calving & Carcass available in IRL for dairy maidens

GABRIEL PAT (AA4631): Highest Carcass proven Angus bull available in IRL for dairy maidens

Bull	Name	DBI Beef Sub Index	DBI Calving Sub Index	Gest. Length (days)	*Expected gestation	Dairy Heifer Cdiff	Dairy Heifer Cdiff Rel	DBI	DBI Rel	Carc Wgt (Kg)	Carc Conf	Use on
AA4089	INTELAGRI MATTEO E.T.	€51	€62	-3.8	277	6.4%	99%	€113	97%	8.7	0.79	Maiden heifers
AA4631	GABRIEL PAT 1949	€45	€56	-2.7	278	6.4%	97%	€101	93%	8.9	0.6	Maiden heifers
ANGUS BREED AVERAGE		€45	€27	-0.2	280	8.2%	n/a	€73	n/a	6.7	0.69	

Bull	Name	DBI Beef Sub Index	DBI Calving Sub Index	Gest. Length (days)	*Expected gestation	Dairy Cow Calv. diff	Dairy Cow Calv. diff Rel	DBI	DBI Rel	Carc Wgt (Kg)	Carc Conf	Use on
AA7485	PROHURST EOGHAN W759	€94	€55	-3.1	277	2.7%	60%	€149	53%	23.0	0.95	2nd calvers
AA4323	TREE BRIDGE POWYS S589	€85	€21	0.2	281	4.9%	96%	€63	94%	20.5	1.17	Mature cows
AA6682	HW LORD HORATIO V538	€82	€38	-2.5	278	3.5%	95%	€119	68%	19.6	1.03	Cows
AA7506	TOWER TOMMIE	€76	€50	-2.8	278	2.7%	60%	€127	54%	16.3	0.89	Proof pending
AA4640	HW FARGHAL T516	€73	€24	-0.6	280	3.3%	99%	€97	95%	16.7	0.97	Cows
AA6331	DEELISH SHOTGUN	€71	€47	-2.6	278	2.8%	94%	€118	78%	17.0	0.93	2nd calvers
AA4088	INTELAGRI MAVERICK E.T.	€60	€49	-3.2	277	2.8%	99%	€109	96%	7.5	0.71	2nd calvers
AA2309	ST AODAIN L MASTER	€55	€13	-0.1	280	3.7%	99%	€68	96%	12.3	0.79	Cows
AA8472	TUBRIDMORE TWOMEY ET	€53	€45	-1.9	278	2.2%	49%	€98	44%	14.1	0.45	TEST
AA5280	COOLRAIN PATRIARCH	€43	€32	-2.0	278	3.5%	98%	€75	91%	8.2	0.64	Cows
ANGUS BREED AVERAGE		€45	€27	-0.2	280	2.7%	n/a	€73	n/a	6.7	0.69	

*Expected gestation is the expected gestation of progeny when used on cows with an average index for gestation length

No 1 FULLY PROVEN ANGUS FOR DAIRY MAIDENS CALVING & CARCASS



AA4089 INTELAGRI MATTEO E.T.

- No. 1 fully proven AA for calving & carcass available in IRL for dairy maidens
- Most used AA in the dairy herd 2021 & 2022
- 2nd shortest gestation AA available in IRL



SIRE

AA4631 GABRIEL PAT 1949

- Highest Carcass proven bull available for maidens in IRL
- +9 kgs Carcass weight
- Very short gestation sire

No 1 ANGUS ON DBI



AA7485 PROHURST EOGHAN W759

- No. 1 Angus available in IRL on DBI
- Paternal brother to Matteo (AA4089) & Maverick (AA4088) from the full sister to RGZ
- Easy calving, short gestation and high performance



AA6682 HW LORD HORATIO V538

- No. 1 choice Angus for dairy cows
- No. 3 Angus available on DBI in IRL
- Top 2% of the AA breed for Carcass Weight & Conformation
- Short gestation -2.5 days



AA4640 HW FARGHAL T516

- Proven producer of exceptional quality calves
- Progeny have excellent shape - top 5% of AA breed for Carcass conformation
- One of the best bulls available to use on 2nd calvers and cows to consistently produce high quality calves



AA8472 TUBRIDMORE TWOMEY ET



- Exciting new test sire
- An exceptional quality bull from a strong pedigree for calving ease and short gestation

BEEF FOR THE DAIRY HERD

SECURITY OF CALVING EASE



HOW TO PRODUCE BEEF CALVES WITH MAXIMUM COMMERCIAL BEEF VALUE

SHORT GESTATION



Select appropriate sires for your Maidens, 2nd Calvers, Cows and Mature Cows as outlined below

COMMERCIAL BEEF VALUE MAXIMISED €€€

Then select sires with the highest Beef Sub-Index within your calving range

HEREFORD

FEATURING

GOULDINGPOLL 1 ZORO PP (HE6841) NO. 1 Hereford sire available in IRL on Beef Sub Index

FISHER 1 PROFILE P456 PP (HE5346) NO. 1 Proven Hereford sire available in IRL on DBI

Bull	Name	DBI Beef Sub Index	DBI Calving Sub Index	Ges-tation Length [days]	*Expected gestation	Dairy Cow Cdiff	Dairy Cow Cdiff Rel	DBI	DBI Rel	Carc Wgt (Kg)	Carc Conf	Use on
HE6841	GOULDINGPOLL 1 ZORO PP	€64	€19	0.7	281	3.1%	95%	€82	68%	13.2	0.73	2nd calvers
HE8511	INTELAGRI 1 GOLD RUSH ET Pp	€59	€17	-1.4	279	4.0%	59%	€75	50%	12.2	0.69	TEST
HE8514	INTELAGRI 1 KRUSADER 2 PP	€53	€19	-0.9	279	3.9%	56%	€72	49%	9.5	0.81	TEST
HE4344	ALLOWDALE RAMBO 475	€51	-€26	-1.9	279	6.4%	94%	€25	91%	13.5	0.72	Mature Cows
HE5346	FISHER 1 PROFILE P456 PP	€50	€29	-2.3	278	3.5%	99%	€79	91%	4.8	0.66	2nd calvers
HE4291	ALLOWDALE ADVANCE 573 ET	€41	€6	-0.2	280	4.1%	99%	€46	95%	6.7	0.5	Cows
HE6361	SOLPOLL 1 SPARK PP	€39	€0	0.8	281	4.1%	95%	€39	63%	4.5	0.44	Cows
HE6364	SOLPOLL 1 SONIC PP	€38	€27	-1.9	278	3.8%	95%	€65	68%	3.7	0.71	Cows
KKO	DENDOR 1 KOHINOOR PP	€37	-€19	-0.2	280	5.5%	99%	€18	93%	3.7	0.71	Mature Cows
HE5452	ALLOWDALE RORY 835	€34	€24	-1.3	279	3.9%	96%	€58	81%	4.1	0.77	Cows
HE5455	BARWISE 1 RICOCHET PP	€33	€42	-2.2	278	3.0%	95%	€75	76%	1.3	0.56	2nd calvers
HEREFORD BREED AVERAGE		€36	-€8	1.0	281	4.4%	N/A	€27	N/A	5.0	0.54	



No 1
HE ON BEEF SUB INDEX

HE6841 GOULDINGPOLL 1 ZORO PP

- No. 1 HE sire available in IRL on Beef Sub Index
- No. 2 HE available in IRL on DBI
- No. 1 Homozygous polled HE available in IRL on DBI



No 1
HE ON DBI

HE5346 FISHER 1 PROFILE P456 PP

- No. 1 proven HE sire on DBI available in IRL
- The full package, calving ease, short gestation, high carcass
- Homozygous polled



HE8514 INTELAGRI 1 KRUSADER 2 PP

TEST TEST SIRE

- Exciting new test sire
- Panmure 1 Henry son - sire of Kentucky Kid, Zoro, Sonic
- Homozygous polled



HE6364 SOLPOLL 1 SONIC PP

- The complete package of short gestation, average calving and good carcass traits
- Son of the renowned Panmure 1 Henry
- Homozygous polled

BELGIAN BLUE

Bull	Name	DBI Beef Sub Index	DBI Calving Sub Index	Ges-tation Length [days]	*Expected gestation	Dairy Cow Cdiff	Dairy Cow Cdiff Rel	DBI	DBI Rel	Carc Wgt (Kg)	Carc Conf	Use on
BB7440	TIC	€165	-€36	-0.2	280	6.9%	63%	€129	49%	33.6	2.66	Mature Cows
BB8283	VILLABLUES OXO ET	€162	-€104	0.6	281	9.1%	53%	€58	47%	32.5	2.81	TEST
BB8493	SYLVESTRE P DE FASTRE	€160	-€92	0.1	281	8.6%	38%	€68	36%	33.9	2.61	Mature Cows
BB8496	STEF VD BLOMSTEEG	€133	-€35	-0.6	280	7.0%	38%	€99	34%	26.2	2.21	Mature Cows
BBX101	KOREAS P	€120	-€21	-0.4	280	6.6%	91%	€100	61%	21.5	1.82	Mature Cows
BB7278	BBG ELK 236 DE BOULOGNE	€114	-€22	-2.3	278	6.9%	81%	€92	55%	19.4	2.05	Mature Cows
BB7335	MOORSLEY MOMENTO	€83	-€6	0.0	280	5.7%	83%	€77	62%	11.1	1.69	Mature Cows
BELGIAN BLUE BREED AVERAGE		€175	-€108	0.9	281	9.4%	n/a	€65	n/a	35.5	2.82	

CHAROLAIS

CH4321	LAPON	156	-61	2.17	282.57	7.2%	0.93	95	0.91	41	2.23	Mature cows
CH6490	ORBI	141	-78	1.98	282.38	7.6%	0.37	63	0.44	38.7	1.7	TEST
CHAROLAIS BREED AVERAGE		140	-122	2.72	283.12	8.8%	n/a	16.48	n/a	34.35	1.9	

AUBRAC

FEATURING

TURLOUGHMORE MAGNIFICENT (AU468) NO. 1 Aubrac on DBI standing in Irish AI

Bull	Name	DBI Beef Sub Index	DBI Calving Sub Index	Ges-tation Length [days]	*Expected gestation	Dairy Cow Cdiff	Dairy Cow Cdiff Rel	DBI	DBI Rel	Carc Wgt (Kg)	Carc Conf	Use on
AU4683	TURLOUGHMORE MAGNIFICENT	€113	€12	0.6	281	3.7%	99%	€126	93%	18.2	1.75	Cows
AU6685	MOUNTCAIN ONDEE	€99	€13	-0.9	279	3.9%	92%	€112	68%	14.6	1.78	Cows
AUBRAC BREED AVERAGE		€104	€10	0.8	281	3.5%	n/a	€114	n/a	16.7	1.85	

BB8283 VILLABLUES OXO ET



- New test sire
- Bred for use on the dairy herd



BB7278 BBG ELK 236 DE BOULOGNE



- The full package!
- Calving ease, short gestation, good calf quality.
- Good colour markings when crossed on the dairy herd

CH6490 ORBI



- New Charolais for use on dairy cows
- Proven to be exceptionally easy on beef cows and beef heifers

AU4683 TURLOUGHMORE MAGNIFICENT



- No. 1 AU on DBI standing in Irish AI
- Magnificent's calves are born on time
- Exceptional calf quality

BEEF FOR THE DAIRY HERD

SECURITY OF CALVING EASE



HOW TO PRODUCE BEEF CALVES WITH MAXIMUM COMMERCIAL BEEF VALUE

SHORT GESTATION



Select appropriate sires for your Maidens, 2nd Calvers, Cows and Mature Cows as outlined below

COMMERCIAL BEEF VALUE MAXIMISED €€€

Then select sires with the highest Beef Sub-Index within your calving range

LIMOUSIN

Bull	Name	DBI Beef Sub Index	DBI Calving Sub Index	Ges-tation Length [days]	*Expected gestation	Dairy Cow Cdiff	Dairy Cow Cdiff Rel	DBI	DBI Rel	Carc Wgt (Kg)	Carc Conf	Use on
LM7416	POWERFUL PROPER	€135	-€21	1.8	282	5.7%	54%	€114	55%	24.7	2.26	COWS
LM4217	MOONDHARRIG KNELL	€128	-€27	2.9	283	5.1%	98%	€101	96%	21.1	1.99	COWS
LM8286	RUTLAND REUBEN	€122	€5	2.4	283	3.6%	50%	€127	48%	19.3	2.24	TEST
LIMOUSIN BREED AVERAGE		€80	-€52	2.27	283	6.45%	n/a	€30	n/a	19.9	1.3	

SIMMENTAL

FEATURING

LEEHERD LYNX 364 (SI7491) NO. 1 Simmental available in IRL on DBI

SI7491	LEEHERD LYNX 364	€107	-€30	1.02	281	5.84%	44%	€77	47%	31.0	1.66	TEST
SI2152	CURAHEEN EARP	€94	-€61	1.74	282	6.77%	97%	€33	95%	23.0	1.55	Mature cows
SI4250	LIS-NA-RI GUCCI	€76	-€32	2.24	283	5.94%	89%	€44	89%	19.3	1.66	Mature cows
SI8520	PORTROYAL MR BULL PP	€73	-€8	0.64	281	5.64%	42%	€65	41%	16.2	1.13	Mature cows
SI2469	LISNACRANN FIFTY CENT	€64	-€29	0.48	281	5.83%	98%	€36	95%	15.1	1.02	Mature cows
SIMMENTAL BREED AVERAGE		€80	-€52	2.27	283	6.45%	n/a	€30	n/a	19.9	1.3	

SALER

FEATURING

KNOTTOWN ROY (SA4604) NO. 1 Salers standing in Irish AI on DBI

SA4604	KNOTTOWN ROY	€96	€30	0.09	280	2.9%	90%	€126	91%	20.9	1.03	2nd Calvers
SALERS BREED AVERAGE		€82	€22	0.74	281	2.9%	n/a	€103	n/a	15.4	1.05	



- The complete package of calving ease, short gestation and high carcass
- Top 1% of the LM breed on gestation length



No 1

SI ON DBI

LM7416 **POWERFUL PROPER**

SI7491 **LEEHERD LYNX 364**

- No. 1 SI available in IRL on DBI
- Short gestation simmental



No 1

SA ON DBI

SA4604 **KNOTTOWN ROY**

- No. 1 SA on DBI standing in Irish AI



Heat Detection Aids



Glue

€25

Roll of 100 E-alert patches

€55



1 gallon paint for harness

€80

CHINBALL HARNESS
(for vasectomised bull)

Paint for harness also available in 2.5L size (€35)

€180

DULUX TAIL PAINT



€18

ESTROTECT HEAT ALERT TAGS
(50 Pack)



€75

€35



Paintsticks (12 per box)

€33

TAILPAINTER DAISY PAINT WITH BRUSH

- 750ml bottle
- Water based tail paint
- Available in blue, orange, green and red.



€18

NEW PRODUCT
Spring '22

DAISY PAINT
750ML / 2.5L / 5L

- Water based tail paint
- Compatible with
- Tailpainter range
- Blue, orange, green and red



€15



€64



€235

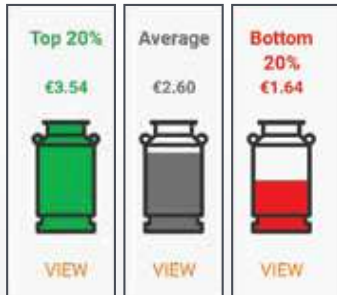
TAILPAINTER ONE COLOUR REFILL KIT

- Tailpainter handle with extension
- Applicator head with roller
- 1 litre refill bottle



Improve Your Profitability With Milk Recording & FarmOps

€ Your best cows ranked quickly, easily & accurately:



Using our new Milk Recording Lifetime rank, FarmOps makes it easy for you to find your best cows.

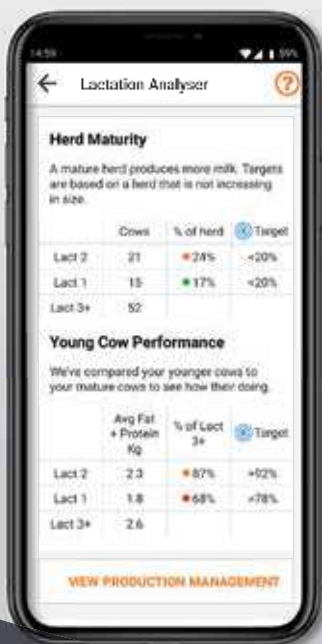
With the Margin Analyser, find out why your best cows are your best. Is it genetics, days in milk, days dry, SCC?



How much are you feeding your cows? Is it enough?

Should you be feeding 3, 4 or 5kg of nuts in the parlour? Based on your grass/silage input, FarmOps tells you what your average cow needs. You can also see the spread within your herd quickly and easily.

1 2 3 Is each lactation performing?

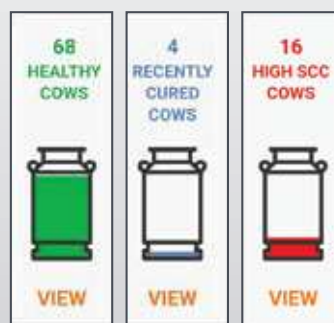


Only with FarmOps, can you now establish:

- ✓ What is your herd maturity like?
- ✓ Are your 1st and 2nd calvers performing?
- ✓ Which are the non-performing cows in each lactation?



Tackle SCC with the full picture:



For the first time, FarmOps brings SCC & treatments together in one place.

Each cow's SCC & treatment history is clearly presented. High SCC cows are displayed in groups:



Cows suitable for treatment.



Cows with a poor chance of cure.



Cows with lots of cases of mastitis. Review quarter before treating.

Download your Free 90 Day Trial Today!





**Giving you access to the
world's largest breeding programmes**



If you are interested in a bull that is not featured in our brochure from any of our agencies we will do our best to fill your specific requirements.

Orders are placed at the start and middle of each month. Allow 6 weeks for delivery.

OUR TEAM



John Tobin
087 3832001
Sales & Advisory Manager

East Cork / Waterford



Brendan Scully
Farm Relationship
Manager
086 4126727



Jack Walsh
Breeding Advisor
087 1030356



Graham Swanton
Senior Breeding Advisor
087 7420965

West Cork



Declan Keating
Farm Relationship
Manager
086 8164024



Anthony Buckley
Breeding Advisor
086 344 0642

North Cork



Joe O Flynn
Farm Relationship
Manager
086 4030646



Jack Walsh
Breeding Advisor
087 1030356



Graham Swanton
Senior Breeding Advisor
087 7420965

South Cork



Eustace Bourke
Farm Relationship
Manager
086 0274558



Tom Tobin
Breeding Advisor
087 2758061

Tipperary



Joe Tobin
Breeding Advisor
086 8125441



Ben Slee
Breeding Advisor
087 2902031



Graham Swanton
Senior Breeding Advisor
087 7420965

Limerick



Michael Clohessy
Farm Relationship
Manager
086 6054723



Mervyn Kearney
Breeding Advisor
086 8360780



Graham Swanton
Senior Breeding Advisor
087 7420965

Clare & Galway



Enda O'Gorman
Farm Relationship
Manager
086 8352700



Donal Coppinger
Breeding Advisor
087 3159166



Graham Swanton
Senior Breeding Advisor
087 7420965

Kerry



James Egan
Farm Relationship
Manager
087 2529895



Jack Walsh
Breeding Advisor
087 1030356



IMPORTANT UPDATE:
WE NOW HAVE A SINGLE FREE PHONE NUMBER
FOR ALL AI CALLS IN ALL AREAS.

1800 251 020

Main Office
Ballyvorisheen, Mallow,
Co. Cork, P51 YF57
t: 022 43228
e: info@munsterbovine.ie
w: www.munsterbovine.ie

