



MUNSTER
BOVINE
Collectively Improving Farm Life



Suckler / Pedigree Beef Sires

2023

(ICBF July 23 Evaluation)

BELGIAN BLUE			
1	BB8941	NOVATEUR DES PRINCES DE LIGNE Pp	
2	BB9553	BENEVOLE DU BOUCHELET	PRE-ORDER
2	IDB	ILOT DU BOUCHELET	PRE-ORDER
2	BB9580	VERRATI DE COBREVILLE	PRE-ORDER
3	BB9463	BBG HONG WANG	
4	BB8944	OCTOPUS DE BIERWA	
5	BB8947	CACHEMIRE DE DESSOUS LA VILLE	
6	BB8950	EDISON DE CENTFONTAINE	
7	BB7443	NEWTON DE FONTENA	
8	BB4498	DELURE DE LA BEOLE	
8	FSN	FOLON DE CRAS AVERNAS	
9	BB7383	TOP SIDE OUT THERE Pp	
9	BB6883	TULLAMOYLAN MAX	
10	S3750	MAMBO DES PEUPLIERS	PRE-ORDER
10	BB7638	NEW RED	
10	BB5223	NOX DE L'ORGELOT	
LIMOUSIN			
11	LM8286	RUTLAND REUBEN	
12	LM4217	MOONDHARRIG KNELL	
12	LM7416	POWERFUL PROPER	
13	LM8625	ARDLEA ROLEX	
14	LM8622	ARDLEA RIGBY ET	
15	LM8619	CASTLEVIEW REECE	
16	LM9379	SHANNON STAN	
17	LM9376	KELTIC SUPERFURRY Pp	
18	LM8259	KELTIC REMBRANDT	
19	LM8616	LISNA SIR	
20	LM2117	TOMSCHOICE IMPERIAL	
20	LM6280	O MALLETT PP	
21	LM3713	NEBBIOLO	PRE-ORDER
22	LM6172	EREBOS	PRE-ORDER
22	LM8715	JAUREL	PRE-ORDER
23	LM2242	EDAKKYA	PRE-ORDER
23	LM4351	GRENACHE	PRE-ORDER
24	LM4407	TWEEDDALE LENNOX	PRE-ORDER
24	LM7599	MOEBIUS	PRE-ORDER
25	LM8109	PERCY	PRE-ORDER
25	LM7431	JURANCON	PRE-ORDER
26	LM7428	HECTOR GD	PRE-ORDER
26	S3301	TELFERS MUNSTER	PRE-ORDER
CHAROLAIS			
27	CH6490	ORBI	
28	CH7503	CLOONRADOON RICKY	
29	CH4251	GOLDSTAR LUDWIG	
29	CH4321	LAPON	

30	CH8334	CORBAUN RORY	
31	CH8571	RECIF	
32	CH6493	OMEGA	
33	CH8568	RAMEAU	
34	CH8577	SULTAN	
35	CH8580	ROMARIN	
36	CH8262	GRANGWOOD ROYAL OAK ET	
36	CH6175	NERON P	
37	CH6121	MERLIN P	PRE-ORDER
37	CH8112	MESSMER	PRE-ORDER
38	CH2216	FIRST	PRE-ORDER
38	CH6118	GIONO	PRE-ORDER
39	CH6298	HAMEL	PRE-ORDER
39	CH6115	MELOMAN	PRE-ORDER
SIMMENTAL			
40	SI4350	RUBYJEN HERE'S JOHNNY	
41	SI7491	LEEHERD LYNX 364	
42	SI2469	LISNACRANN FIFTY CENT	
42	SI4250	LIS-NA-RI GUCCI	
43	SI2152	CURAHEEN EARP	
43	SI8520	PORTROYAL MR BULL PP	
SALERS			
44	SA6346	HIBOU	PRE-ORDER
44	SA4604	KNOTTOWN ROY	
AUBRAC			
45	AU4683	TURLOUGHMORE MAGNIFICENT	
PARTHENAISE			
46	ZGH	HURRICANE GONZO	
BLONDE D'AQUITAINE			
46	BA2308	STONELEA INZAGI	
ABERDEEN ANGUS			
47	AA8472	TUBRIDMORE TWOMEY	
48	AA6682	HW LORD HORATIO	
49	AA5280	COOLRAIN PATRIARCH	
49	AA4087	GOULDING MAN OH MAN	
50	AA4089	INTELAGRI MATTEO	
50	AA7452	TE MANIA NEBO N424	PRE-ORDER
HEREFORD			
51	HE9382	GOULDINGPOLL 1 NIJNSKY PP	
52	HE5346	FISHER 1 PROFILE PP	
52	HE6841	GOULDINGPOLL 1 ZORO PP	
53	HE4344	ALLOWDALE RAMBO 475	
54	HE8511	INTELAGRI 1 GOLD RUSH Pp	
SHORTHORN			
55	SH2181	COOLVIN DOMINATOR (R)	
55	SH8532	RYLO DUNCAN (RW)(H)	

SYMBOLS EXPLAINED

For each breed, the superior sires for weanling production, finishing and replacements are clearly labelled. These labels are our stamp of approval.



The superior sires for weanling production are the sires that will deliver the highest value weanlings. Progeny of these sires have excellent weight and muscle development at the weaning stage. The sires recommended for weanling production in this catalogue rank highly for weaning weight and calf quality, at high reliabilities. They consistently produce numerous champions and top prices at weaning shows and sales around the country.



The superior sires for finishing are the sires which will efficiently produce heavy, high grade, high value carcasses. The sires recommended for finishing in this catalogue rank highly for carcass weight and carcass conformation at high reliabilities



A pedigree royalty fee applies to these sires at the time of registration of pedigree progeny. This is collected by the relevant breed society. No fee applies to commercial calves.



The superior sires for replacements are those which will deliver solid, hard-working cows. Daughters have good milk, fertility, calving ability, temperament, are easily maintained and are functionally correct in order to last the long winters inside. The sires recommended in this catalogue for replacement are well proven.



These are bulls which are awaiting a calving survey

BB8941 NOVATEUR DES PRINCES DE LIGNE Pp PED

DOB:
30-May-2019

MYOSTATIN STATUS:
NT821/NT821 (2 Copies)

I.D.: BBLBELM000061553259

BELGIAN BLUE



NOVATEUR DES PRINCES DE LIGNE Pp

Bred by: Van Heule, Elevage SPRL, Belgium



Star Rating (within breed)	Economic Indexes	€uro value per progeny	Index reliability	Star Rating (across all beef breeds)
★★★★★	REPLACEMENT	€142	35% (Low)	★★★★★
★★★★☆	TERMINAL	€151	37% (Low)	★★★★★
★★★★★	DAIRY BEEF	€123	38% Low	★★★★★

Source ICFB July 23

Calving Difficulty (births requiring considerable assistance; % 3 & 4)			
When Mated With:	%	Reliability	Calving Records
Beef Heifers	14.5%	35% (Low)	0
Beef Cows	6.0%	61% (High)	0



NOVATEUR DES PRINCES DE LIGNE Pp

Star Rating (within breed)	Key profit traits	Index value	Trait reliability	Star Rating (across all beef breeds)
EXPECTED PROGENY PERFORMANCE				
★★★★★	Gestation Length (days)	-0.8d	33% (Low)	★★★★★
★★★★★	Docility (1-5 scale)	0.21 scale	32% (Low)	★★★★★
★★★☆☆	Carcass weight (kg)	29.9kg	32% (Low)	★★★★★
★★★☆☆	Carcass conformation (1-15 scale)	2.59 scale	32% (Low)	★★★★★
EXPECTED DAUGHTER BREEDING PERFORMANCE				
	Daughter calving difficulty (% 3 & 4)	8.9%	52% (Average)	
★★★★★	Daughter milk (kg)	4.8kg	32% (Low)	★★★★★
★★★★★	Daughter calving interval (days)	1.8d	32% (Low)	★★★★★



NOVATEUR DES PRINCES DE LIGNE Pp

Genotype included in evaluation

- Novateur's first calves in Belgium were born small and are developing well.
- Plenty of shape in Novateur's pedigree with Zougar & Adajio.
- Heterozygous polled. 50% of calves will be polled (no horns).



SCAN ME FOR LATEST INDEX

- └─ IDEALE DEHORNER
- └─ IDEALE BLACK BEARD PP ET
- └─ IDEALE POLLED PIRATE RC ET
- └─ ZOUGAR D'OZO
- └─ LAVANDE DES PRINCES DE LIGNE
- └─ IRIS DES PRINCES DE LIGNE

BB9553 BENEVOLE DU BOUCHELET PED
I.D.: BBLBELM000758986907



SCAN ME FOR LATEST INDEX

Bred by: André et Benoit Demarcin, Belgium



- One of the highest bulls on conformation and weight available from Belgium.
- Carrier of the red factor.
- Use on mature cows only.

— TILOUIS D'ATRIVE
— ZOUGAR D'OZO
— JOIGNANTE D'OZO
— ORVAL DES 3 FRONTIERES
— VILIERE DU BOUCHELET
— ROXANE DU BOUCHELET

DOB: 19-Sep-2017 | MYOSTATIN STATUS: NT821/NT821 (2 Copies)

Star Rating (within breed)	Economic Indexes	Euro value per progeny	Index reliability	Star Rating (across all beef breeds)
★★★★★	REPLACEMENT	€73	34% (Low)	★★★★★
★★★★★	TERMINAL	€127	36% (Low)	★★★★★
★★★★★	DAIRY BEEF	€58	38% (Low)	★★★★★

Calving Difficulty (births requiring considerable assistance; % 3 & 4)			
When Mated With:	%	Reliability	Calving Records
Beef Heifers	19.4%	34% (Low)	0
Beef Cows	9.5%	61% (High)	0

Star Rating (within breed)	Key profit traits	Index value	Trait reliability	Star Rating (across all beef breeds)
EXPECTED PROGENY PERFORMANCE				
★★★★★	Gestation Length (days)	0.1d	33% (Low)	★★★★★
★★★★★	Docility (1-5 scale)	0.18 scale	32% (Low)	★★★★★
★★★★★	Carcass weight (kg)	29.3kg	32% (Low)	★★★★★
★★★★★	Carcass conformation (1-15 scale)	2.47 scale	31% (Low)	★★★★★
EXPECTED DAUGHTER BREEDING PERFORMANCE				
	Daughter calving difficulty (% 3 & 4)	11.6%	50% (Average)	
★★★★★	Daughter milk (kg)	5.3kg	30% (Low)	★★★★★
★★★★★	Daughter calving interval (days)	2.4d	31% (Low)	★★★★★

Genotype included in evaluation

Source ICBF July 23

PRE-ORDER

IDB ILOT DU BOUCHELET PED
I.D.: BBLBELM000760688844



SCAN ME FOR LATEST INDEX

Bred by: Christophe et Frédéric Lequeux, Belgium



- Ilot transmits excellent weight and shape to his progeny.
- Excellent legs & feet.
- Use to produce show weanlings.

— AJUSTE DU BRONHEIT
— VALLI VAN TERBECK
— OOIKE VAN TERBECK
— ELAN DE ST FONTAINE
— GAREE DU BOUCHELET
— ANAIS DU BOUCHELET

DOB: 22-Oct-2005 | MYOSTATIN STATUS: NT821/NT821 (2 Copies)

Star Rating (within breed)	Economic Indexes	Euro value per progeny	Index reliability	Star Rating (across all beef breeds)
★★★★★	REPLACEMENT	€40	95% (Very high)	★★★★★
★★★★★	TERMINAL	€98	91% (Very high)	★★★★★
★★★★★	DAIRY BEEF	€-184	89% (Very high)	★★★★★

Calving Difficulty (births requiring considerable assistance; % 3 & 4)			
When Mated With:	%	Reliability	Calving Records
Beef Heifers	29.5%	87% (Very high)	46
Beef Cows	12.9%	98% (Very high)	1036

Star Rating (within breed)	Key profit traits	Index value	Trait reliability	Star Rating (across all beef breeds)
EXPECTED PROGENY PERFORMANCE				
★★★★★	Gestation Length (days)	0.8d	99% (Very high)	★★★★★
★★★★★	Docility (1-5 scale)	0.21 scale	98% (Very high)	★★★★★
★★★★★	Carcass weight (kg)	24.3kg	99% (Very high)	★★★★★
★★★★★	Carcass conformation (1-15 scale)	2.73 scale	99% (Very high)	★★★★★
EXPECTED DAUGHTER BREEDING PERFORMANCE				
	Daughter calving difficulty (% 3 & 4)	10.4%	96% (Very high)	
★★★★★	Daughter milk (kg)	4.4kg	98% (Very high)	★★★★★
★★★★★	Daughter calving interval (days)	4d	92% (Very high)	★★★★★

Genotype included in evaluation

Source ICBF July 23

PRE-ORDER

BB9580 VERRATI DE COBREVILLE PED
I.D.: BBLBELM000053814719



SCAN ME FOR LATEST INDEX

Bred by: Christophe et Guebenne Lequeux, Belgium



- Verrati is transmitting extreme muscling.
- Same index for conformation as Canadian club and Serpentin ZSD.
- Works best on tall cows, he will add the shape.

— HERCULE DE MAHENNE
— POLTRON DES PEUPLIERS
— MISALLE DES PEUPLIERS
— ILOT DU BOUCHELET
— NOSTALGIC DE COBREVILLE
— GIFAFLE DE COBREVILLE

DOB: 08-Mar-2016 | MYOSTATIN STATUS: NT821/NT821 (2 Copies)

Star Rating (within breed)	Economic Indexes	Euro value per progeny	Index reliability	Star Rating (across all beef breeds)
★★★★★	REPLACEMENT	€58	34% (Low)	★★★★★
★★★★★	TERMINAL	€98	36% (Low)	★★★★★
★★★★★	DAIRY BEEF	€27	37% (Low)	★★★★★

Calving Difficulty (births requiring considerable assistance; % 3 & 4)			
When Mated With:	%	Reliability	Calving Records
Beef Heifers	25.3%	35% (Low)	0
Beef Cows	10.5%	60% (High)	0

Star Rating (within breed)	Key profit traits	Index value	Trait reliability	Star Rating (across all beef breeds)
EXPECTED PROGENY PERFORMANCE				
★★★★★	Gestation Length (days)	0.1d	31% (Low)	★★★★★
★★★★★	Docility (1-5 scale)	0.17 scale	31% (Low)	★★★★★
★★★★★	Carcass weight (kg)	24.8kg	31% (Low)	★★★★★
★★★★★	Carcass conformation (1-15 scale)	2.23 scale	31% (Low)	★★★★★
EXPECTED DAUGHTER BREEDING PERFORMANCE				
	Daughter calving difficulty (% 3 & 4)	11.4%	52% (Average)	
★★★★★	Daughter milk (kg)	6.3kg	31% (Low)	★★★★★
★★★★★	Daughter calving interval (days)	4d	31% (Low)	★★★★★

Genotype included in evaluation

Source ICBF July 23

PRE-ORDER

BB9463 BBG HONG WANG

PED

DOB:
13-Mar-2021

MYOSTATIN STATUS:
NT821/NT821 (2 Copies)

I.D.: BBLBELM000324772121

BELGIAN BLUE



BBG HONG WANG



Bred by: LV Pardon, Belgium



Star Rating (within breed)	Economic Indexes	€uro value per progeny	Index reliability	Star Rating (across all beef breeds)
★★★★★	REPLACEMENT	€113	35% (Low)	★★★★★
★★★☆☆	TERMINAL	€141	38% (Low)	★★★★★
★★★★★	DAIRY BEEF	€98	39% (Low)	★★★★★

Source ICBF July 23



BBG HONG WANG

Calving Difficulty (births requiring considerable assistance: % 3 & 4)			
When Mated With:	%	Reliability	Calving Records
Beef Heifers	15.6%	35% (Low)	0
Beef Cows	7.3%	61% (High)	0

Star Rating (within breed)	Key profit traits	Index value	Trait reliability	Star Rating (across all beef breeds)
EXPECTED PROGENY PERFORMANCE				
★★★★★	Gestation Length (days)	-0.7d	34% (Low)	★★★★★
★★★★★	Docility (1-5 scale)	0.25 scale	34% (Low)	★★★★★
★★★☆☆	Carcass weight (kg)	29.4kg	34% (Low)	★★★★★
★★★☆☆	Carcass conformation (1-15 scale)	2.38 scale	34% (Low)	★★★★★
EXPECTED DAUGHTER BREEDING PERFORMANCE				
	Daughter calving difficulty (% 3 & 4)	8.0%	52% (Average)	
★★★★★	Daughter milk (kg)	4.2kg	33% (Low)	★★★★★
★★★★★	Daughter calving interval (days)	4.2d	32% (Low)	★★★★★

Genotype included in evaluation

- Use Hong Wang to breed super quality roan show animals.
- Hong Wang is a very well-muscled, correct bull from a proven excellent dam line.
- He is sure to breed with the two great bulls Impartial d'Izier & Germinal de Fooz in his pedigree.



SCAN ME FOR
LATEST INDEX

- GOULU DE LA HASSE
- IDEALE DEHORNER
- IDEALE POLLED LINDY P
- IMPARTIAL D'IZIER
- LUCY VAN HET BAREELHOF
- CHIQUITA VAN HET BAREELHOF

BB8944 OCTOPUS DE BIERWA

PED

DOB:
01-Jan-2020

MYOSTATIN STATUS:
NT821/NT821 (2 Copies)

I.D.: BBLBELM00064470485



Bred by: Duchene Hubert et Pierard Didier, Belgium



Star Rating (within breed)	Economic Indexes	Euro value per progeny	Index reliability	Star Rating (across all beef breeds)
★★★★★	REPLACEMENT	€48	35% (Low)	★☆☆☆☆
★★★★★	TERMINAL	€151	37% (Low)	★★★★★
★★★★★	DAIRY BEEF	€85	39% (Low)	★★★★★

Calving Difficulty (births requiring considerable assistance; % 3 & 4)			
When Mated With:	%	Reliability	Calving Records
Beef Heifers	20.8%	36% (Low)	0
Beef Cows	12.6%	62% (High)	0

Star Rating (within breed)	Key profit traits	Index value	Trait reliability	Star Rating (across all beef breeds)
EXPECTED PROGENY PERFORMANCE				
★★★★★	Gestation Length (days)	0.3d	33% (Low)	★★★★★
★★★★★	Docility (1-5 scale)	0.18 scale	33% (Low)	★★★★★
★★★★★	Carcass weight (kg)	38.7kg	33% (Low)	★★★★★
★★★★★	Carcass conformation (1-15 scale)	2.97 scale	33% (Low)	★★★★★
EXPECTED DAUGHTER BREEDING PERFORMANCE				
	Daughter calving difficulty (% 3 & 4)	12.0%	52% (Average)	
★★★★★	Daughter milk (kg)	4.7kg	32% (Low)	★★★★★
★★★★★	Daughter calving interval (days)	5d	32% (Low)	★★★★★

Source (CFB July 23)



Dam, Lily De Bierwa



OCTOPUS DE BIERWA

Genotype included in evaluation

- Octopus is a very heavily muscled bull from a high muscle pedigree.
- His has many top sires for conformation in his pedigree, Darko, Adajio, Germinal de Fooz.
- Octopus himself is full of class!



SCAN ME FOR LATEST INDEX

- └ WILMOTS DU FALGI
- DARKO DE CENTFONTAINE**
- └ SUPERSTAR DE CENTFONTAINE
- └ OR DE BEAUJEU
- LILY DE BIERWA**
- └ JONCTION DE BIERWE

BB8947 CACHEMIRE DE DESSOUS LA VILLE

PED

DOB:
23-Jul-2019

MYOSTATIN STATUS:
NT821/NT821 (2 Copies)

I.D.: BBLBELM000063914700

BELGIAN BLUE



CACHEMIRE DE DESSOUS LA VILLE

Bred by: Bruno Strepenné, Belgium



Star Rating (within breed)	Economic Indexes	Euro value per progeny	Index reliability	Star Rating (across all beef breeds)
★★★★★	REPLACEMENT	€71	34% (Low)	★★★★★
★★★★★	TERMINAL	€126	36% (Low)	★★★★★
★★★★★	DAIRY BEEF	€41	38% Low	★★★★★

Source: ICBF, July 23

Calving Difficulty (births requiring considerable assistance; % 3 & 4)			
When Mated With:	%	Reliability	Calving Records
Beef Heifers	24.6%	35% (Low)	0
Beef Cows	9.4%	60% (High)	0



CACHEMIRE DE DESSOUS LA VILLE

Star Rating (within breed)	Key profit traits	Index value	Trait reliability	Star Rating (across all beef breeds)
EXPECTED PROGENY PERFORMANCE				
★★★★★	Gestation Length (days)	0.3d	31% (Low)	★★★★★
★★★★★	Docity (1-5 scale)	0.22 scale	31% (Low)	★★★★★
★★★★★	Carcass weight (kg)	31.3kg	31% (Low)	★★★★★
★★★★★	Carcass conformation (1-15 scale)	2.49 scale	31% (Low)	★★★★★
EXPECTED DAUGHTER BREEDING PERFORMANCE				
	Daughter calving difficulty (% 3 & 4)	10.5%	51% (Average)	
★★★★★	Daughter milk (kg)	6.7kg	31% (Low)	★★★★★
★★★★★	Daughter calving interval (days)	3d	31% (Low)	★★★★★



Daughters

Genotype included in evaluation

- One of the best bulls currently available from the BBG programme sired by the renowned Fute.
- Progeny are truly exceptional - size, length, width, super shapy and classy.
- The Belgian birth weight index indicates average to easy calving. Calves are born small and develop very quickly.



SCAN ME FOR LATEST INDEX

- GROMMIT HOF TER ZILVERBERG
- FUTE
- AUTORITE DE SOMME
- LARRON D YVOIR
- 9115 DE DESSOUS LA VILLE
- PRIORITE DE DESSOUS LA VILLE

BB8950 EDISON DE CENTFONTAINE

PED

DOB:
18-Sep-2019

MYOSTATIN STATUS:
NT821/NT821 (2 Copies)

I.D.: BBLBELM000063938592



Bred by: Benoit Mahoux, Belgium



Star Rating (within breed)	Economic Indexes	Euro value per progeny	Index reliability	Star Rating (across all beef breeds)
★★★★★	REPLACEMENT	€58	37% (Low)	★☆☆☆☆
★★★★★	TERMINAL	€148	39% (Low)	★★★★★
★★★★★	DAIRY BEEF	€75	41% Average	★★★★★

Source (CFB July 23)



Cosette de centfontaine, Sister

Calving Difficulty (births requiring considerable assistance; % 3 & 4)			
When Mated With:	%	Reliability	Calving Records
Beef Heifers	22.6%	38% (Low)	0
Beef Cows	11.2%	65% (High)	0



Cardinal-Propre-frere, full brother

Star Rating (within breed)	Key profit traits	Index value	Trait reliability	Star Rating (across all beef breeds)
EXPECTED PROGENY PERFORMANCE				
★★★★★	Gestation Length (days)	0.4d	36% (Low)	★★★★★
★★★★★	Docility (1-5 scale)	0.23 scale	35% (Low)	★★★★★
★★★★★	Carcass weight (kg)	34.3kg	35% (Low)	★★★★★
★★★★★	Carcass conformation (1-15 scale)	3.1 scale	35% (Low)	★★★★★
EXPECTED DAUGHTER BREEDING PERFORMANCE				
	Daughter calving difficulty (% 3 & 4)	10.3%	54% (Average)	
★★★★★	Daughter milk (kg)	4.7kg	34% (Low)	★★★★★
★★★★★	Daughter calving interval (days)	8.1d	33% (Low)	★★★★★

Genotype included in evaluation

- Edison's first calves in Belgium were born early and shaped up quickly.
- Progeny exhibit excellent muscle development.
- A grandson of the king of shape -Imperial de L'Ecluse.



SCAN ME FOR
LATEST INDEX

- └ IMPERIAL DE L'ECLUSE
- └ JET SET VAN DEN HONDELEE
- └ SUPERSTAR DE CENTFONTAINE
- └ NOCEUR DE FOOZ
- └ VALEUREUSE DE CENTFONTAINE
- └ POESIE DE CENTFONTAINE

BB7443 NEWTON DE FONTENA

PED

DOB:
27-Sep-2017

MYOSTATIN STATUS:
NT821/NT821 (2 Copies)

I.D.: BBLBELM000858921577



Bred by: Maurice Marot, Belgium

BELGIAN BLUE



Star Rating (within breed)	Economic Indexes	€uro value per progeny	Index reliability	Star Rating (across all beef breeds)
★★★★★	REPLACEMENT	€4	41% (Average)	★☆☆☆☆
★★★★★	TERMINAL	€125	47% (Average)	★★★★★
★★★★★	DAIRY BEEF	€73	49% Average	★★★★★

Source ICF July 23



Daughter

Calving Difficulty (births requiring considerable assistance; % 3 & 4)			
When Mated With:	%	Reliability	Calving Records
Beef Heifers	30.1%	40% (Average)	0
Beef Cows	14.4%	82% (Very high)	49



Daughter

Star Rating (within breed)	Key profit traits	Index value	Trait reliability	Star Rating (across all beef breeds)
EXPECTED PROGENY PERFORMANCE				
★★★★★	Gestation Length (days)	1.2d	69% (High)	★★★★★
★★★★★	Docility (1-5 scale)	0.29 scale	48% (Average)	★★★★★
★★★★★	Carcass weight (kg)	33.8kg	42% (Average)	★★★★★
★★★★★	Carcass conformation (1-15 scale)	3.01 scale	36% (Low)	★★★★★
EXPECTED DAUGHTER BREEDING PERFORMANCE				
	Daughter calving difficulty (% 3 & 4)	11.3%	55% (Average)	
★★★★★	Daughter milk (kg)	4.9kg	34% (Low)	★★★★★
★★★★★	Daughter calving interval (days)	9.3d	34% (Low)	★★★★★

Genotype included in evaluation

- Newton's progeny are impressive.
- Progeny are very heavily muscled with good performance.
- The perfect bull to breed top-end weanlings from R grade cows.



SCAN ME FOR LATEST INDEX

- IMPERIAL DE L'ECLUSE
- JET SET VAN DEN HONDELEE
- SUPERSTAR DE CENTFONTAINE
- FLIRTER VD KERKENHOFSTEDE
- 7352 DE FONTENA
- ADOREE DE FONTENA

BB4498 DELURE DE LA BEOLE

PED

I.D.: BBLBELM000457865144

DOB:
29-Aug-2014

MYOSTATIN STATUS:
NT821/NT821 (2 Copies)



DELURE DE LA BEOLE



Bred by: Wilmet Verlee, France



Source ICBF July 23

Star Rating (within breed)	Economic Indexes	Euro value per progeny	Index reliability	Star Rating (across all beef breeds)
★★★★★	REPLACEMENT	€71	62% (High)	★★★★★
★★★★★	TERMINAL	€124	86% (Very high)	★★★★★
★★★★★	DAIRY BEEF	€-8	81% (Very high)	★★★★★
Calving Difficulty (births requiring considerable assistance; % 3 & 4)				
When Mated With:		%	Reliability	Calving Records
Beef Heifers		25.9%	59% (Average)	19
Beef Cows		13.0%	97% (Very high)	731

Star Rating (within breed)	Key profit traits	Index value	Trait reliability	Star Rating (across all beef breeds)
EXPECTED PROGENY PERFORMANCE				
★★★★★	Gestation Length (days)	1d	97% (Very high)	★★★★★
★★★★★	Docility (1-5 scale)	0.18 scale	96% (Very high)	★★★★★
★★★★★	Carcass weight (kg)	34.2kg	95% (Very high)	★★★★★
★★★★★	Carcass conformation (1-15 scale)	2.92 scale	94% (Very high)	★★★★★
EXPECTED DAUGHTER BREEDING PERFORMANCE				
Daughter calving difficulty (% 3 & 4)		8.8%	56% (Average)	
★★★★★	Daughter milk (kg)	5.7kg	41% (Average)	★★★★★
★★★★★	Daughter calving interval (days)	4.6d	43% (Average)	★★★★★

Genotype included in evaluation

- LIBERAL D'OCHAMPS
- BALANCIER DE LA BEOLE**
- ABSINTHE DE LA BEOLE
- JUVENTUS DE L'ECLUSE
- BRECHE DE LA BEOLE**
- VERO DE LA BEOLE



SCAN ME FOR LATEST INDEX

- Delure is a proven superior weanling producer.
- Works best on 3/4 Limousin cows.
- He transmits correctness, style and shape.



Delure daughter, Jalex Heifer Sale 2023

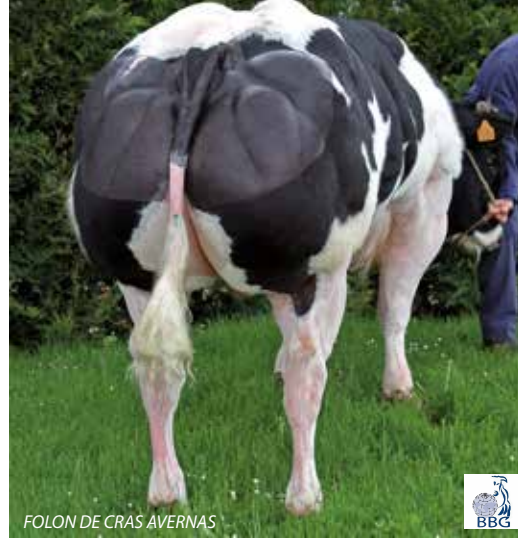
FSN FOLON DE CRAS AVERNAS

PED

I.D.: BBLBELM000826472628

DOB:
03-Oct-2010

MYOSTATIN STATUS:
NT821/NT821 (2 Copies)



FOLON DE CRAS AVERNAS



Bred by: Jose Lallemand-Dantinne, Belgium



Source ICBF July 23

Star Rating (within breed)	Economic Indexes	Euro value per progeny	Index reliability	Star Rating (across all beef breeds)
★★★★★	REPLACEMENT	€43	83% (Very high)	★★★★★
★★★★★	TERMINAL	€136	90% (Very high)	★★★★★
★★★★★	DAIRY BEEF	€32	87% (Very high)	★★★★★
Calving Difficulty (births requiring considerable assistance; % 3 & 4)				
When Mated With:		%	Reliability	Calving Records
Beef Heifers		23.5%	75% (High)	35
Beef Cows		11.0%	98% (Very high)	1386

Star Rating (within breed)	Key profit traits	Index value	Trait reliability	Star Rating (across all beef breeds)
EXPECTED PROGENY PERFORMANCE				
★★★★★	Gestation Length (days)	1.9d	99% (Very high)	★★★★★
★★★★★	Docility (1-5 scale)	0.25 scale	98% (Very high)	★★★★★
★★★★★	Carcass weight (kg)	32.1kg	99% (Very high)	★★★★★
★★★★★	Carcass conformation (1-15 scale)	2.96 scale	99% (Very high)	★★★★★
EXPECTED DAUGHTER BREEDING PERFORMANCE				
Daughter calving difficulty (% 3 & 4)		13.2%	78% (High)	
★★★★★	Daughter milk (kg)	5.1kg	85% (Very high)	★★★★★
★★★★★	Daughter calving interval (days)	6.2d	61% (High)	★★★★★

Genotype included in evaluation

- MONT BLANC DE CENTFONTAINE
- PANACHE DE CENTFONTAINE**
- MONDAINE ET DE CENTFONTAINE
- TROPIQUE DE CRAS AVERNAS
- CASQUETTE DE CRAS AVERNAS**
- ARCHIE ET DE CRAS AVERNAS



SCAN ME FOR LATEST INDEX

- Folon has proven himself as a firm farmers' favourite.
- Consistent producer of superior weanlings - he transmits shape.
- Works best on tall cows e.g. BAX.



Daughter, Victoria Farms Elite Heifer Sale 2023, Sold for €7500

BB7383 TOP SIDE OUT THERE Pp PED

I.D.: BBLGBRM115268500254

DOB: 20-Jul-2019

MYOSTATIN STATUS: NT821/NT821 (2 Copies)



TOP SIDE OUT THERE Pp

Bred by: Ross & Elaine Pattinson, UK



Source ICBF July 23

Star Rating (within breed)	Economic Indexes	Euro value per progeny	Index reliability	Star Rating (across all beef breeds)
★★★★★	REPLACEMENT	€68	43% (Average)	★★★★★
★★★★★	TERMINAL	€99	54% (Average)	★★★★★
★★★★★	DAIRY BEEF	€110	58% (Average)	★★★★★
Calving Difficulty (births requiring considerable assistance; % 3 & 4)				
When Mated With:	%	Reliability	Calving Records	
Beef Heifers	18.6%	38% (Low)	2	
Beef Cows	11.5%	91% (Very high)	177	

Star Rating (within breed)	Key profit traits	Index value	Trait reliability	Star Rating (across all beef breeds)
EXPECTED PROGENY PERFORMANCE				
★★★★★	Gestation Length (days)	-0.4d	95% (Very high)	★★★★★
★★★★★	Docility (1-5 scale)	0.08 scale	54% (Average)	★★★★★
★★★★★	Carcass weight (kg)	23kg	49% (Average)	★★★★★
★★★★★	Carcass conformation (1-15 scale)	1.97 scale	39% (Low)	★★★★★
EXPECTED DAUGHTER BREEDING PERFORMANCE				
	Daughter calving difficulty (% 3 & 4)	8.3%	52% (Average)	
★★★★★	Daughter milk (kg)	7.1kg	33% (Low)	★★★★★
★★★★★	Daughter calving interval (days)	1.9d	35% (Low)	★★★★★

Genotype included in evaluation

- └ DAFYDD D'OCHAIN
- └ FLEURON ET DE MAFFE
- └ SUBTIL 8827 DE MAFFE
- └ PARK THUNDERBOLT
- └ LOWTHWAITE CUDDLES P
- └ LOWTHWAITE WENDYWO



SCAN ME FOR LATEST INDEX

- Top Side Out There Pp has that magic combination of calving ease and quality.
- Works best on 3/4 bred Limousin cows.
- Average calving, same level as Folon (FSN).



Top side out there calf, Nathan & Adam Doogan

BB6883 TULLAMOYLAN MAX PED

I.D.: BBLIRLM212451890171

DOB: 18-Apr-2018

MYOSTATIN STATUS: NT821/NT821 (2 Copies)



TULLAMOYLAN MAX

Bred by: Dan Duignan, Nenagh, Co. Tipperary



Source ICBF July 23

Star Rating (within breed)	Economic Indexes	Euro value per progeny	Index reliability	Star Rating (across all beef breeds)
★★★★★	REPLACEMENT	€19	53% (Average)	★★★★★
★★★★★	TERMINAL	€145	62% (High)	★★★★★
★★★★★	DAIRY BEEF	€74	68% (High)	★★★★★
Calving Difficulty (births requiring considerable assistance; % 3 & 4)				
When Mated With:	%	Reliability	Calving Records	
Beef Heifers	28.1%	46% (Average)	0	
Beef Cows	12.4%	88% (Very high)	90	

Star Rating (within breed)	Key profit traits	Index value	Trait reliability	Star Rating (across all beef breeds)
EXPECTED PROGENY PERFORMANCE				
★★★★★	Gestation Length (days)	1d	98% (Very high)	★★★★★
★★★★★	Docility (1-5 scale)	0.25 scale	75% (High)	★★★★★
★★★★★	Carcass weight (kg)	35.1kg	61% (High)	★★★★★
★★★★★	Carcass conformation (1-15 scale)	3 scale	52% (Average)	★★★★★
EXPECTED DAUGHTER BREEDING PERFORMANCE				
	Daughter calving difficulty (% 3 & 4)	13.1%	60% (High)	
★★★★★	Daughter milk (kg)	4.5kg	44% (Average)	★★★★★
★★★★★	Daughter calving interval (days)	7.2d	41% (Average)	★★★★★

Genotype included in evaluation

- └ DAVIDSON DE L'ECLUSE
- └ HARRISON ET DE LA PLATTE
- └ COCINELLE ET DE FOOZ
- └ MANITOU DE BELLE EAU
- └ BALLINTOTTY HEIDI ET
- └ BALLYFIN COCKTAIL ET



SCAN ME FOR LATEST INDEX

- Max is stamping his progeny with power and shape.
- Use to produce heavy weanlings with excellent muscle development.
- Use on mature cows only.



Daughter

S3750 MAMBO DES PEUPLIERS

PED

DOB: 30-Mar-2016

MYOSTATIN STATUS: NT821/NT821 (2 Copies)

I.D.: BBLBELM000956679349



MAMBO DES PEUPLIERS



SCAN ME FOR LATEST INDEX

Bred by: Denis Kinet, Belgium



- Mambo transmits calving ease, short gestation and good quality.
- Use to produce quality cattle with shape without jeopardising calving ease.

— LOTTO VD VLOEIKENSHOEVE
SADDO DES PEUPLIERS
 — MADDIE DES PEUPLIERS
 — NELSON DES PEUPLIERS
REZA DES PEUPLIERS
 — OLLA DES PEUPLIERS

Star Rating (within breed)	Economic Indexes	Euro value per progeny	Index reliability	Star Rating (across all beef breeds)
★★★★★	REPLACEMENT	€91	35% (Low)	★★★★★
★★★★★	TERMINAL	€150	38% (Low)	★★★★★
★★★★★	DAIRY BEEF	€122	39% (Low)	★★★★★

Calving Difficulty (births requiring considerable assistance; % 3 & 4)			
When Mated With:	%	Reliability	Calving Records
Beef Heifers	19.4%	36% (Low)	0
Beef Cows	7.1%	62% (High)	0

Star Rating (within breed)	Key profit traits	Index value	Trait reliability	Star Rating (across all beef breeds)
EXPECTED PROGENY PERFORMANCE				
★★★★★	Gestation Length (days)	0.5d	34% (Low)	★★★★★
★★★★★	Docility (1-5 scale)	0.25 scale	34% (Low)	★★★★★
★★★★★	Carcass weight (kg)	34.4kg	34% (Low)	★★★★★
★★★★★	Carcass conformation (1-15 scale)	2.6 scale	34% (Low)	★★★★★
EXPECTED DAUGHTER BREEDING PERFORMANCE				
★★★★★	Daughter calving difficulty (% 3 & 4)	9.2%	52% (Average)	★★★★★
★★★★★	Daughter milk (kg)	5.2kg	33% (Low)	★★★★★
★★★★★	Daughter calving interval (days)	4.3d	32% (Low)	★★★★★

Genotype included in evaluation

Source ICBF July 23

BB7638 NEW RED

PED

DOB: 18-Dec-2017

MYOSTATIN STATUS: NT821/NT821 (2 Copies)

I.D.: BBLBELM000213694203



NEW RED



SCAN ME FOR LATEST INDEX

Bred by: Thierry Maes, Belgium



- New Red produces the classiest roan cattle
- Easy calving on cows.
- The perfect bull to breed roans with quality & style.

— LENNIE VAN HET CALOENHOF
VEGA DU FALGI
 — TARATATA DU FALGI
 — TARZAN DU FALGI
2027
 — 9846

Star Rating (within breed)	Economic Indexes	Euro value per progeny	Index reliability	Star Rating (across all beef breeds)
★★★★★	REPLACEMENT	€147	50% (Average)	★★★★★
★★★★★	TERMINAL	€157	73% (High)	★★★★★
★★★★★	DAIRY BEEF	€129	74% (High)	★★★★★

Calving Difficulty (births requiring considerable assistance; % 3 & 4)			
When Mated With:	%	Reliability	Calving Records
Beef Heifers	17.2%	48% (Average)	10
Beef Cows	8.2%	97% (Very high)	746

Star Rating (within breed)	Key profit traits	Index value	Trait reliability	Star Rating (across all beef breeds)
EXPECTED PROGENY PERFORMANCE				
★★★★★	Gestation Length (days)	1.2d	98% (Very high)	★★★★★
★★★★★	Docility (1-5 scale)	0.29 scale	87% (Very high)	★★★★★
★★★★★	Carcass weight (kg)	33.7kg	76% (High)	★★★★★
★★★★★	Carcass conformation (1-15 scale)	2.97 scale	70% (High)	★★★★★
EXPECTED DAUGHTER BREEDING PERFORMANCE				
★★★★★	Daughter calving difficulty (% 3 & 4)	8.8%	50% (Average)	★★★★★
★★★★★	Daughter milk (kg)	5.2kg	30% (Low)	★★★★★
★★★★★	Daughter calving interval (days)	1.3d	37% (Low)	★★★★★

Genotype included in evaluation

Source ICBF July 23

BB5223 NOX DE L'ORGELOT

PED

DOB: 27-Apr-2017

MYOSTATIN STATUS: NT821/NT821 (2 Copies)

I.D.: BBLBELM000359338727



NOX DE L'ORGELOT



SCAN ME FOR LATEST INDEX

Bred by: Bernard Schoiez, Belgium



- Nox has established himself as an exceptional weanling producer.
- Progeny are exceptionally well muscled with good weight for age.
- Use on mature cows only.

— EMPIRE D'OCHAIN
ADAJIO DE BRAY
 — HUMAINE ET DE BRAY
 — BENHUR DU CHAMP BOUVAL
STUPIDE DE L'ORGELOT
 — PASTILLE DE L'ORGELOT

Star Rating (within breed)	Economic Indexes	Euro value per progeny	Index reliability	Star Rating (across all beef breeds)
★★★★★	REPLACEMENT	€60	64% (High)	★★★★★
★★★★★	TERMINAL	€115	86% (Very high)	★★★★★
★★★★★	DAIRY BEEF	€89	80% (Very high)	★★★★★

Calving Difficulty (births requiring considerable assistance; % 3 & 4)			
When Mated With:	%	Reliability	Calving Records
Beef Heifers	26.8%	57% (Average)	7
Beef Cows	13.4%	98% (Very high)	1091

Star Rating (within breed)	Key profit traits	Index value	Trait reliability	Star Rating (across all beef breeds)
EXPECTED PROGENY PERFORMANCE				
★★★★★	Gestation Length (days)	1.2d	98% (Very high)	★★★★★
★★★★★	Docility (1-5 scale)	0.13 scale	97% (Very high)	★★★★★
★★★★★	Carcass weight (kg)	31.9kg	94% (Very high)	★★★★★
★★★★★	Carcass conformation (1-15 scale)	2.99 scale	93% (Very high)	★★★★★
EXPECTED DAUGHTER BREEDING PERFORMANCE				
★★★★★	Daughter calving difficulty (% 3 & 4)	11.1%	63% (High)	★★★★★
★★★★★	Daughter milk (kg)	2.6kg	47% (Average)	★★★★★
★★★★★	Daughter calving interval (days)	1.7d	50% (Average)	★★★★★

Genotype included in evaluation

Source ICBF July 23

LM8286 RUTLAND REUBEN

PED

DOB:
05-Sep-2020

MYOSTATIN STATUS:
+/+ (Non-Carrier), Profit gene: F94L/F94L(2 Copies)

I.D.: LIMIRLM216759840408



LM8286 Rutland Reuben



Bred by: Noel Ruttledge, Ballina, Co. Mayo



Star Rating (within breed)	Economic Indexes	Euro value per progeny	Index reliability	Star Rating (across all beef breeds)
★★★★★	REPLACEMENT	€120	52% (Average)	★★★★★
★★★☆☆	TERMINAL	€114	56% (Average)	★★★★★
★★★★★	DAIRY BEEF	€112	61% High	★★★★★

Source ICBF July 23

Calving Difficulty (births requiring considerable assistance; % 3 & 4)			
When Mated With:	%	Reliability	Calving Records
Beef Heifers	6.3%	60% (High)	8
Beef Cows	4.4%	86% (Very high)	50



LM8286 Rutland Reuben

Star Rating (within breed)	Key profit traits	Index value	Trait reliability	Star Rating (across all beef breeds)
EXPECTED PROGENY PERFORMANCE				
★★★★★	Gestation Length (days)	3.6d	94% (Very high)	★★★★★
★★★★★	Docility (1-5 scale)	0 scale	48% (Average)	★★★★★
★★★☆☆	Carcass weight (kg)	19kg	48% (Average)	★★★★★
★★★★★	Carcass conformation (1-15 scale)	2.14 scale	49% (Average)	★★★★★
EXPECTED DAUGHTER BREEDING PERFORMANCE				
	Daughter calving difficulty (% 3 & 4)	4.8%	63% (High)	
★★★★★	Daughter milk (kg)	2.7kg	49% (Average)	★★★★★
★★★★★	Daughter calving interval (days)	1.3d	45% (Average)	★★★★★



Rutland Reuben heifer, Paucic O'Loughlin, Co. Cavan

Genotype included in evaluation

- Great satisfaction with the first progeny from Reuben - they were easily born and exhibit good size, length and quality.
- Suitable for strong heifers and 2nd calvers
- Excellent temperament.
- Super docility.



SCAN ME FOR
LATEST INDEX

- └ KAPRICO ERAVELLE
- └ TOMSCHOICE ICEBERG
- └ TOMSCHOICE CHANEL
- └ QUEENSHEAD ALTEA
- └ RUTLAND JESS
- └ CASTLEVIEW GODDESS

LM4217 MOONDHARRIG KNELL PED

I.D.: LIMIRLM211038650530

DOB: 18-Sep-2015

MYOSTATIN STATUS: +/+ (Non-Carrier), Profit gene: F94L/F94L(2 Copies)



MOONDHARRIG KNELL

Bred by: Liam Walsh, Mooncoin, Co. Kilkenny

LM7416 POWERFUL PROPER PED

I.D.: LIMIRLM217657250237

DOB: 01-Jul-2019

MYOSTATIN STATUS: +/+ (Non-Carrier), Profit gene: F94L/F94L(2 Copies)



POWERFUL PROPER

Bred by: Philip Crowe, Ballinagh, Co. Cavan



Source ICBF July 23

Star Rating (within breed)	Economic Indexes	Euro value per progeny	Index reliability	Star Rating (across all beef breeds)
★★★★★	REPLACEMENT	€167	94% (Very high)	★★★★★
★★★★☆	TERMINAL	€119	95% (Very high)	★★★★☆
★★★★☆	DAIRY BEEF	€112	94% (Very high)	★★★★☆
Calving Difficulty (births requiring considerable assistance; % 3 & 4)				
When Mated With:	%	Reliability	Calving Records	
Beef Heifers	9.1%	99% (Very high)	6894	
Beef Cows	4.3%	99% (Very high)	10445	

Star Rating (within breed)	Key profit traits	Index value	Trait reliability	Star Rating (across all beef breeds)
EXPECTED PROGENY PERFORMANCE				
★★★★★	Gestation Length (days)	2.9d	99% (Very high)	★★★★☆
★★★★☆	Docility (1-5 scale)	-0.08 scale	99% (Very high)	★★★★☆
★★★★☆	Carcass weight (kg)	20.6kg	99% (Very high)	★★★★☆
★★★★☆	Carcass conformation (1-15 scale)	1.98 scale	99% (Very high)	★★★★☆
EXPECTED DAUGHTER BREEDING PERFORMANCE				
	Daughter calving difficulty (% 3 & 4)	3.9%	94% (Very high)	
★★★★☆	Daughter milk (kg)	-1.4kg	97% (Very high)	★★★★☆
★★★★★	Daughter calving interval (days)	-6.5d	85% (Very high)	★★★★★

Genotype included in evaluation

- ON-DIT
- BAVARDAGE
- RIDELLE
- NIMBUS-MN
- MOONDHARRIG FLORA
- MOONDHARRIG LOTTO



SCAN ME FOR LATEST INDEX

- A proven superior cow maker Daughters are very efficient, milky cows with excellent calving ability and fertility.
- Daughters have exceptional calving ability, 3.9% @ 94% reliability based on over 1300 records.
- Daughters have excellent fertility, No. 2 bull available for Calving Interval.



Knell Daughter, Park and Na Cru Farms.



Source ICBF July 23

Star Rating (within breed)	Economic Indexes	Euro value per progeny	Index reliability	Star Rating (across all beef breeds)
★★★★☆	REPLACEMENT	€118	58% (Average)	★★★★☆
★★★★☆	TERMINAL	€108	67% (High)	★★★★☆
★★★★☆	DAIRY BEEF	€128	70% (High)	★★★★☆
Calving Difficulty (births requiring considerable assistance; % 3 & 4)				
When Mated With:	%	Reliability	Calving Records	
Beef Heifers	6.9%	90% (Very high)	231	
Beef Cows	3.5%	97% (Very high)	891	

Star Rating (within breed)	Key profit traits	Index value	Trait reliability	Star Rating (across all beef breeds)
EXPECTED PROGENY PERFORMANCE				
★★★★★	Gestation Length (days)	2.1d	99% (Very high)	★★★★☆
★★★★☆	Docility (1-5 scale)	-0.04 scale	86% (Very high)	★★★★☆
★★★★☆	Carcass weight (kg)	16.5kg	63% (High)	★★★★☆
★★★★☆	Carcass conformation (1-15 scale)	2.15 scale	53% (Average)	★★★★☆
EXPECTED DAUGHTER BREEDING PERFORMANCE				
	Daughter calving difficulty (% 3 & 4)	3.7%	64% (High)	
★★★★★	Daughter milk (kg)	3.9kg	49% (Average)	★★★★☆
★★★★☆	Daughter calving interval (days)	4.1d	47% (Average)	★★★★☆

Genotype included in evaluation

- WILODGE TONKA
- KAPRICO ERAVELLE
- KAPRICO RAVELLE
- AMPERTAINE ABRACADABRA
- LISCARN EVE
- LISCARN TARA



SCAN ME FOR LATEST INDEX

- Proven easy calving bull suitable for pedigree and commercial maiden heifers
- Short gestation -top 2% of the LM breed
- Progeny are well-muscled, correct and stylish



Proper Calf, Shane Kelly Tuam, Co. Galway

LM8625 ARDLEA ROLEX

PED

DOB:
18-Nov-2020

MYOSTATIN STATUS:
NT821/+ (one copy) Profit gene: F94L/(+1 Copy)

I.D.: LIMIRLM216910682005

LIMOUSIN



ARDLEA ROLEX

Bred by: Daniel Tynan, Mountrath, Co. Laois



Star Rating (within breed)	Economic Indexes	Euro value per progeny	Index reliability	Star Rating (across all beef breeds)
★★★★★	REPLACEMENT	€108	45% (Average)	★★★★★
★★★★★	TERMINAL	€151	49% (Average)	★★★★★
★★★★★	DAIRY BEEF	€124	47% Average	★★★★★

Source: ICBF July 23

Calving Difficulty (births requiring considerable assistance; % 3 & 4)			
When Mated With:	%	Reliability	Calving Records
Beef Heifers	7.5%	46% (Average)	0
Beef Cows	3.0%	76% (High)	0



ARDLEA ROLEX

Star Rating (within breed)	Key profit traits	Index value	Trait reliability	Star Rating (across all beef breeds)
EXPECTED PROGENY PERFORMANCE				
★★★★★	Gestation Length (days)	3.3d	45% (Average)	★★★★★
★★★★★	Docility (1-5 scale)	-0.02 scale	46% (Average)	★★★★★
★★★★★	Carcass weight (kg)	25.8kg	46% (Average)	★★★★★
★★★★★	Carcass conformation (1-15 scale)	2.39 scale	44% (Average)	★★★★★
EXPECTED DAUGHTER BREEDING PERFORMANCE				
	Daughter calving difficulty (% 3 & 4)	4.9%	57% (Average)	
★★★★★	Daughter milk (kg)	-2.4kg	42% (Average)	★★★★★
★★★★★	Daughter calving interval (days)	1.6d	38% (Low)	★★★★★



Paternal Sister, Trueman Tapiola, Henry Savage

Genotype included in evaluation

- Rolex first calves are due this Autumn.
- He is bred to produce super weanlings with extra shape.
- He is a son of Telfers Munster from a proven Vison dam.
- Rolex is a super looking well-muscled, correct, classy bull with great temperament.



SCAN ME FOR LATEST INDEX

- └ LODGE HAMLET
- └ TELFERS MUNSTER
- └ TELFERS IMAGINATION
- └ VISON
- └ ARDLEA HULA
- └ F039 SERINE

LM8622 ARDLEA RIGBY ET

PED

DOB:
24-Dec-2020MYOSTATIN STATUS:
+ / + (Non-Carrier), Profit gene: F94L/F94L(2 Copies)

I.D.: LIMIRLM216910672020



ARDLEA RIGBY ET



Bred by: Daniel Tynan, Mountrath, Co. Laois

PROOF
PENDINGPEDIGREE
ROYALTYFEMALE
SEXEDMALE
SEXED

Star Rating (within breed)	Economic Indexes	€uro value per progeny	Index reliability	Star Rating (across all beef breeds)
★★★★★	REPLACEMENT	€111	45% (Average)	★★★★★
★★★★★	TERMINAL	€168	49% (Average)	★★★★★
★★★★★	DAIRY BEEF	€113	48% Average	★★★★★

Source (CBF July 23)



ARDLEA RIGBY ET

Calving Difficulty (births requiring considerable assistance; % 3 & 4)			
When Mated With:	%	Reliability	Calving Records
Beef Heifers	10.3%	49% (Average)	0
Beef Cows	5.9%	73% (High)	0

Star Rating (within breed)	Key profit traits	Index value	Trait reliability	Star Rating (across all beef breeds)
EXPECTED PROGENY PERFORMANCE				
★★★★★	Gestation Length (days)	4.2d	44% (Average)	★★★★★
★★★★★	Docility (1-5 scale)	0.02 scale	47% (Average)	★★★★★
★★★★★	Carcass weight (kg)	39.4kg	47% (Average)	★★★★★
★★★★★	Carcass conformation (1-15 scale)	2.54 scale	45% (Average)	★★★★★
EXPECTED DAUGHTER BREEDING PERFORMANCE				
	Daughter calving difficulty (% 3 & 4)	6.3%	59% (Average)	
★★★★★	Daughter milk (kg)	0kg	41% (Average)	★★★★★
★★★★★	Daughter calving interval (days)	2.8d	38% (Low)	★★★★★



Kingbull son, Pabo Superspice, Junior champion in Carlisle, 19,000gns

Genotype included in evaluation

- An outstanding Derrygullinane Kingbull son.
- Top 2% of the LM breed on Terminal Index.
- Ranked in the top 1% of the LM breed for muscle development (142), non-carrier for myostatin.

SCAN ME FOR
LATEST INDEX

└ GERRYGULLINANE GLEN
DERRYGULLINANE KINGBULL
 └ DERRYGULLINANE ELSIA ET
 └ WILODGE VANTASTIC
ELITE GISELE ET
 └ URIEL B

LM8619 CASTLEVIEW REECE

PED

DOB:
22-Oct-2020

MYOSTATIN STATUS:
NT821/(one copy) Profit gene: F94L/(one copy)

I.D.: LIMIRLM212644431044



CASTLEVIEW REECE



Bred by: Sean O'Sullivan MRCVS, Castleisland, Co. Kerry

LIMOUSIN



Star Rating (within breed)	Economic Indexes	€uro value per progeny	Index reliability	Star Rating (across all beef breeds)
★★★★★	REPLACEMENT	€117	50% (Average)	★★★★★
★★★★★	TERMINAL	€154	53% (Average)	★★★★★
★★★★★	DAIRY BEEF	€115	51% Average	★★★★★

Source (CFB July 23)

Calving Difficulty (births requiring considerable assistance; % 3 & 4)			
When Mated With:	%	Reliability	Calving Records
Beef Heifers	8.5%	54% (Average)	0
Beef Cows	4.2%	77% (High)	0



CASTLEVIEW REECE

Star Rating (within breed)	Key profit traits	Index value	Trait reliability	Star Rating (across all beef breeds)
EXPECTED PROGENY PERFORMANCE				
★★★★★	Gestation Length (days)	4.8d	46% (Average)	★★★★★
★★★★★	Docity (1-5 scale)	0.02 scale	58% (Average)	★★★★★
★★★★★	Carcass weight (kg)	33.3kg	53% (Average)	★★★★★
★★★★★	Carcass conformation (1-15 scale)	2.37 scale	48% (Average)	★★★★★
EXPECTED DAUGHTER BREEDING PERFORMANCE				
	Daughter calving difficulty (% 3 & 4)	4.5%	63% (High)	
★★★★★	Daughter milk (kg)	4.1kg	48% (Average)	★★★★★
★★★★★	Daughter calving interval (days)	5.2d	41% (Average)	★★★★★



Cameos Daughter

Genotype included in evaluation

- We await Reece's first calves due this Autumn with high expectations.
- He has matured into an exceptional heavily-muscled bull with super temperament.
- Very high Muscle Score 136, Top 3% of the Limousin breed.
- He carries one copy of nt821 which will bring extra shape.



SCAN ME FOR
LATEST INDEX

- REMIX
- CAMEOS
- VELSEUSE
- RONICK HAWK
- CASTLEVIEW JANE
- CASTLEVIEW DIVA

LM9379 SHANNON STAN

PED

DOB:
02-Apr-2021

MYOSTATIN STATUS:
+ / + (Non-Carrier), Profit gene: F94L/F94L (2 Copies)

I.D.: LIMIRLM217687520848



SHANNON STAN

Bred by: Sarah McElligott, Asdee, Co. Kerry



Star Rating (within breed)	Economic Indexes	€uro value per progeny	Index reliability	Star Rating (across all beef breeds)
★★★★★	REPLACEMENT	€188	45% (Average)	★★★★★
★★★★★	TERMINAL	€168	49% (Average)	★★★★★
★★★★★	DAIRY BEEF	€162	51% Average	★★★★★

Source (CFR) July 23

Calving Difficulty (births requiring considerable assistance; % 3 & 4)			
When Mated With:	%	Reliability	Calving Records
Beef Heifers	7.6%	51% (Average)	0
Beef Cows	3.6%	74% (High)	0



SHANNON STAN

Star Rating (within breed)	Key profit traits	Index value	Trait reliability	Star Rating (across all beef breeds)
EXPECTED PROGENY PERFORMANCE				
★★★★★	Gestation Length (days)	1.6d	61% (High)	★★★★★
★★★★★	Docility (1-5 scale)	0.02 scale	47% (Average)	★★★★★
★★★★★	Carcass weight (kg)	33.4kg	46% (Average)	★★★★★
★★★★★	Carcass conformation (1-15 scale)	2.52 scale	45% (Average)	★★★★★
EXPECTED DAUGHTER BREEDING PERFORMANCE				
	Daughter calving difficulty (% 3 & 4)	4.0%	57% (Average)	
★★★★★	Daughter milk (kg)	3.1kg	43% (Average)	★★★★★
★★★☆☆	Daughter calving interval (days)	2.1d	37% (Low)	★★★☆☆



Tomschoice-Lexicon, Sire.

Genotype included in evaluation

- No. 1 Limousin bull standing in Irish AI on Replacement Index, top 2% on Terminal Index.
- Impeccably bred - Tomschoice Lexicon from an Edakky dam.
- Stan himself is an excellent quality, correct, well-muscled bull with super temperament.



SCAN ME FOR
LATEST INDEX

- └ KAPRICO ERAVELLE
- └ TOMSCHOICE LEXICON
- └ TOMSCHOICE ICON
- └ EDAKKYA
- └ SHANNON NICOLA
- └ SHANNON IRENE

LM9376 KELTIC SUPERFURRY Pp

PED

DOB:
22-Apr-2021

MYOSTATIN STATUS:
+ / + (Non-Carrier), Profit gene: F94L/F94L (2 Copies)

I.D.: LIMIRLM225626460348



KELTIC SUPERFURRY Pp



Bred by: Teleri Thomas & Mac Murphy, Enfield, Co. Meath



Star Rating (within breed)	Economic Indexes	€uro value per progeny	Index reliability	Star Rating (across all beef breeds)
★★★★★	REPLACEMENT	€129	46% (Average)	★★★★★
★★★★★	TERMINAL	€149	50% (Average)	★★★★★
★★★★★	DAIRY BEEF	€149	51% Average	★★★★★

Source (CFR July 23)



KELTIC SUPERFURRY Pp

Calving Difficulty (births requiring considerable assistance; % 3 & 4)			
When Mated With:	%	Reliability	Calving Records
Beef Heifers	6.6%	50% (Average)	0
Beef Cows	4.1%	71% (High)	1

Star Rating (within breed)	Key profit traits	Index value	Trait reliability	Star Rating (across all beef breeds)
EXPECTED PROGENY PERFORMANCE				
★★★★★	Gestation Length (days)	1.6d	59% (Average)	★★★★★
★★★★★	Docility (1-5 scale)	-0.05 scale	63% (High)	★★★★★
★★★★★	Carcass weight (kg)	30.3kg	49% (Average)	★★★★★
★★★★★	Carcass conformation (1-15 scale)	2.08 scale	45% (Average)	★★★★★
EXPECTED DAUGHTER BREEDING PERFORMANCE				
	Daughter calving difficulty (% 3 & 4)	2.8%	58% (Average)	
★★★★★	Daughter milk (kg)	-0.6kg	43% (Average)	★★★★★
★★★★★	Daughter calving interval (days)	1d	37% (Low)	★★★★★



Kaprico Eravelle, MGS

Genotype included in evaluation

- Superfurry Pp was selected for calving ease, short gestation and overall quality.
- Three generations of easy calving, short gestation sires - Howlett PP X Eravelle X Commander.
- Heterozygous polled 50% of progeny will be polled (no horns).
- One of the shortest LM sires available on gestation length.



SCAN ME FOR
LATEST INDEX

- └ TOWTHORPE BLACK DODGE
- └ GREENSONS HOWLETT PP
- └ GREENSONS TISKIE
- └ KAPRICO ERAVELLE
- └ KELTIC NOVA
- └ KELTIC JOY

LM8259 KELTIC REMBRANDT

PED

DOB:
25-Oct-2020MYOSTATIN STATUS:
+/+ (Non-Carrier), Profit gene: F94L/F94L(2 Copies)

I.D.: LIMIRLM225626480341



KELTIC REMBRANDT



Bred by: Teleri Thomas & Mac Murphy, Enfield, Co. Meath

CALVING
EASE
AVERAGEPEDIGREE
ROYALTY

Star Rating (within breed)	Economic Indexes	€uro value per progeny	Index reliability	Star Rating (across all beef breeds)
★★★★★	REPLACEMENT	€124	50% (Average)	★★★★★
★★★★★	TERMINAL	€142	55% (Average)	★★★★★
★★★☆☆	DAIRY BEEF	€101	57% Average	★★★★★

Source (CFR) July 23

Calving Difficulty (births requiring considerable assistance; % 3 & 4)			
When Mated With:	%	Reliability	Calving Records
Beef Heifers	9.8%	50% (Average)	1
Beef Cows	3.5%	84% (Very high)	33



KELTIC REMBRANDT

Star Rating (within breed)	Key profit traits	Index value	Trait reliability	Star Rating (across all beef breeds)
EXPECTED PROGENY PERFORMANCE				
★★★★★	Gestation Length (days)	2.1d	85% (Very high)	★★★★★
★★★★★	Docility (1-5 scale)	0 scale	65% (High)	★★★★★
★★★★★	Carcass weight (kg)	28.4kg	52% (Average)	★★★★★
★★★★★	Carcass conformation (1-15 scale)	2.31 scale	48% (Average)	★★★★★
EXPECTED DAUGHTER BREEDING PERFORMANCE				
	Daughter calving difficulty (% 3 & 4)	5.0%	60% (High)	
★★★★★	Daughter milk (kg)	1.3kg	48% (Average)	★★★★★
★★★★★	Daughter calving interval (days)	1.3d	41% (Average)	★★★★★



Son, bred by Teleri Thomas

Genotype included in evaluation

- Rembrandt's first calves are special, long, stylish, correct.
- A complete bull high in both Replacement & Terminal traits.
- Rembrandt is a son of the renowned Edakkya from a super breeding cow, a Foreman daughter.

SCAN ME FOR
LATEST INDEX

— ALEX
EDAKKYA
— BARBIE
— AMPERNAINE FOREMAN
KELTIC JOLIEDIVA
— KELTIC DIVA

LM8616 LISNA SIR

PED

DOB:
01-Jan-2021

MYOSTATIN STATUS:
+ / + (Non-Carrier), Profit gene: F94L/F94L (2 Copies)

I.D.: LIMIRLM225569820465



LISNA SIR

Bred by: Dermot Shaughnessy, Ballinasloe, Co. Galway

LIMOUSIN



Star Rating (within breed)	Economic Indexes	€uro value per progeny	Index reliability	Star Rating (across all beef breeds)
★★★★★	REPLACEMENT	€135	45% (Average)	★★★★★
★★★★★	TERMINAL	€150	48% (Average)	★★★★★
★★★★★	DAIRY BEEF	€142	49% Average	★★★★★

Source (CFB July 23)

Calving Difficulty (births requiring considerable assistance; % 3 & 4)			
When Mated With:	%	Reliability	Calving Records
Beef Heifers	10.9%	52% (Average)	0
Beef Cows	2.4%	72% (High)	0



LISNA SIR

Star Rating (within breed)	Key profit traits	Index value	Trait reliability	Star Rating (across all beef breeds)
EXPECTED PROGENY PERFORMANCE				
★★★★★	Gestation Length (days)	2.2d	46% (Average)	★★★★★
★★★★★	Docity (1-5 scale)	0.03 scale	47% (Average)	★★★★★
★★★★★	Carcass weight (kg)	28.9kg	45% (Average)	★★★★★
★★★★★	Carcass conformation (1-15 scale)	2.32 scale	45% (Average)	★★★★★
EXPECTED DAUGHTER BREEDING PERFORMANCE				
	Daughter calving difficulty (% 3 & 4)	3.8%	57% (Average)	
★★★★★	Daughter milk (kg)	3.2kg	42% (Average)	★★★★★
★★★★★	Daughter calving interval (days)	3.4d	39% (Low)	★★★★★



LISNA SIR

Genotype included in evaluation

- Lisna Sir has it all: he is an exceptional quality, powerful, well-muscled, wide, correct bull.
- Sired by the renowned Tomschoice Lexicon from a big superb On Dit daughter.
- She is one of the best cows in the Lisna herd
- Complete bull, high in both Terminal and Replacement traits.



SCAN ME FOR
LATEST INDEX

- └ KAPRICO ERAVELLE
- TOMSCHOICE LEXICON**
- └ TOMSCHOICE ICON
- └ ON-DIT
- LISNA MIAX**
- └ LISNADELL EITNA

LM2117 TOMSCHOICE IMPERIAL PED

I.D.: LIMGBRM00CJL13-0281

DOB: 18-Nov-2013 | MYOSTATIN STATUS: +/+ (Non-Carrier), Profit gene: F94L/F94L(2 Copies)



TOMSCHOICE IMPERIAL

Bred by: James Cooper, UK

LM6280 O MALLET PP PED

I.D.: LIMFRAM002424668384

DOB: 11-Mar-2018 | MYOSTATIN STATUS: +/+ (Non-Carrier), Profit gene: F94L/F94L(2 Copies)



O MALLET PP

Bred by: CHATEAU PIQUE SEGUE, France



Source ICBF July 23

Star Rating (within breed)	Economic Indexes	Euro value per progeny	Index reliability	Star Rating (across all beef breeds)
★★★★★	REPLACEMENT	€88	95% (Very high)	★★★★★
★★★★★	TERMINAL	€122	95% (Very high)	★★★★★
★★★★★	DAIRY BEEF	€83	93% (Very high)	★★★★★
Calving Difficulty (births requiring considerable assistance; % 3 & 4)				
When Mated With:		%	Reliability	Calving Records
Beef Heifers		13.0%	98% (Very high)	978
Beef Cows		6.5%	99% (Very high)	5073

Star Rating (within breed)	Key profit traits	Index value	Trait reliability	Star Rating (across all beef breeds)
EXPECTED PROGENY PERFORMANCE				
★★★★★	Gestation Length (days)	1.7d	99% (Very high)	★★★★★
★★★★★	Docility (1-5 scale)	-0.1 scale	99% (Very high)	★★★★★
★★★★★	Carcass weight (kg)	23.2kg	99% (Very high)	★★★★★
★★★★★	Carcass conformation (1-15 scale)	2.43 scale	99% (Very high)	★★★★★
EXPECTED DAUGHTER BREEDING PERFORMANCE				
Daughter calving difficulty (% 3 & 4)		3.8%	95% (Very high)	
★★★★★	Daughter milk (kg)	0.1kg	98% (Very high)	★★★★★
★★★★★	Daughter calving interval (days)	3.7d	90% (Very high)	★★★★★

Genotype included in evaluation

- └─ WILODGE TONKA
- KAPRICO ERAVELLE**
- └─ KAPRICO RAVELLE
- └─ HOMEBYRES DRUMMIE
- TOMSCHOICE GAUCHE**
- └─ TOMSCHOICE VOGUE



SCAN ME FOR LATEST INDEX

- Imperial progeny have super shape, he ranks in the top 1% for Carcass Conformation.
- Excellent weanling producer with weight and shape.
- Works best on plain cows.



Imperial Daughter



Source ICBF July 23

Star Rating (within breed)	Economic Indexes	Euro value per progeny	Index reliability	Star Rating (across all beef breeds)
★★★★★	REPLACEMENT	€118	52% (Average)	★★★★★
★★★★★	TERMINAL	€120	75% (High)	★★★★★
★★★★★	DAIRY BEEF	€104	74% (High)	★★★★★
Calving Difficulty (births requiring considerable assistance; % 3 & 4)				
When Mated With:		%	Reliability	Calving Records
Beef Heifers		8.8%	64% (High)	34
Beef Cows		4.0%	96% (Very high)	580

Star Rating (within breed)	Key profit traits	Index value	Trait reliability	Star Rating (across all beef breeds)
EXPECTED PROGENY PERFORMANCE				
★★★★★	Gestation Length (days)	4.6d	98% (Very high)	★★★★★
★★★★★	Docility (1-5 scale)	-0.03 scale	93% (Very high)	★★★★★
★★★★★	Carcass weight (kg)	22.5kg	78% (High)	★★★★★
★★★★★	Carcass conformation (1-15 scale)	2.18 scale	70% (High)	★★★★★
EXPECTED DAUGHTER BREEDING PERFORMANCE				
Daughter calving difficulty (% 3 & 4)		4.1%	51% (Average)	
★★★★★	Daughter milk (kg)	2.2kg	34% (Low)	★★★★★
★★★★★	Daughter calving interval (days)	-0.3d	38% (Low)	★★★★★

Genotype included in evaluation

- └─ PONTUS PP
- PEGASUS**
- └─ JESSICA
- └─ HINZ P P
- INES**
- └─ FATALE



SCAN ME FOR LATEST INDEX

- O' Mallet PP is one of the best homozygous polled Limousin bulls available
- He is used with huge satisfaction across Europe
- Progeny are long, correct and stylish with excellent pelvic areas and docility



HINZ P P Daughter

LM3713 NEBBIOLO

PED

DOB:
18-Dec-2017

MYOSTATIN STATUS:
+/+ (Non-Carrier), Profit gene: F94L/F94L(2 Copies)

I.D.: LIMFRAM002318863211



NEBBIOLO

Bred by: GAEC DESSEAUVE N ETR, France



Star Rating (within breed)	Economic Indexes	Euro value per progeny	Index reliability	Star Rating (across all beef breeds)
★★★★★	REPLACEMENT	€197	57% (Average)	★★★★★
★★★★★	TERMINAL	€198	71% (High)	★★★★★
★★★★★	DAIRY BEEF	€165	68% High	★★★★★

Source ICFB July 23



Daughter, Tully Performance Testing Centre

Calving Difficulty (births requiring considerable assistance; % 3 & 4)			
When Mated With:	%	Reliability	Calving Records
Beef Heifers	7.9%	63% (High)	14
Beef Cows	3.3%	95% (Very high)	143



Daughter, Tully Performance Testing Centre

Star Rating (within breed)	Key profit traits	Index value	Trait reliability	Star Rating (across all beef breeds)
EXPECTED PROGENY PERFORMANCE				
★★★★★	Gestation Length (days)	3.7d	93% (Very high)	★★★★★
★★★★★	Docility (1-5 scale)	0.02 scale	89% (Very high)	★★★★★
★★★★★	Carcass weight (kg)	48.9kg	71% (High)	★★★★★
★★★★★	Carcass conformation (1-15 scale)	2.48 scale	63% (High)	★★★★★
EXPECTED DAUGHTER BREEDING PERFORMANCE				
	Daughter calving difficulty (% 3 & 4)	5.3%	64% (High)	
★★★★★	Daughter milk (kg)	4.7kg	50% (Average)	★★★★★
★★★★★	Daughter calving interval (days)	1.5d	41% (Average)	★★★★★

Genotype included in evaluation

- The full package – Replacement, Terminal & Docility.
- No. 1 Limousin available on Replacement Index.
- No. 2 Limousin available on Terminal Index.
- Nebbiolo daughters performed exceptionally well in Moussours for milk, fertility and calving ability.
- Progeny have excellent weight & shape, their performance in Tully was excellent.



SCAN ME FOR LATEST INDEX

- TASTEVIN
- GRENACHE
- DULCINEE
- BAVARDAGE
- LOUISE
- EGERIE

PRE-ORDER

LM6172 EREBOS

PED

I.D.: LIMFRAM001210076217

DOB: 16-Sep-2009

MYOSTATIN STATUS: +/+ (Non-Carrier), Profit gene: F94L/F94L(2 Copies)



EREBOS

X CréaLim

Bred by: Alain Belloc, France

PRE-ORDER

LM8715 JAUREL

PED

I.D.: LIMFRAM002219275619

DOB: 15-Sep-2014

MYOSTATIN STATUS: +/+ (Non-Carrier), Profit gene: F94L/F94L(2 Copies)



JAUREL

X CréaLim

Bred by: GAEC DU BREUIL ST MAURICE, France



Source ICBF July 23

Star Rating (within breed)	Economic Indexes	Euro value per progeny	Index reliability	Star Rating (across all beef breeds)
★★★★★	REPLACEMENT	€155	65% (High)	★★★★★
★★★★☆	TERMINAL	€132	80% (Very high)	★★★★★
★★★★★	DAIRY BEEF	€131	73% (High)	★★★★★
Calving Difficulty (births requiring considerable assistance; % 3 & 4)				
When Mated With:		%	Reliability	Calving Records
Beef Heifers		5.3%	71% (High)	36
Beef Cows		1.8%	96% (Very high)	131

Star Rating (within breed)	Key profit traits	Index value	Trait reliability	Star Rating (across all beef breeds)
EXPECTED PROGENY PERFORMANCE				
★★★★★	Gestation Length (days)	2.5d	92% (Very high)	★★★★☆
★★★★☆	Docility (1-5 scale)	-0.04 scale	84% (Very high)	★★★★☆
★★★★☆	Carcass weight (kg)	22.6kg	87% (Very high)	★★★★☆
★★★★☆	Carcass conformation (1-15 scale)	1.81 scale	84% (Very high)	★★★★☆
EXPECTED DAUGHTER BREEDING PERFORMANCE				
Daughter calving difficulty (% 3 & 4)		4.6%	68% (High)	
★★★★★	Daughter milk (kg)	7.4kg	72% (High)	★★★★★
★★★★☆	Daughter calving interval (days)	0.4d	47% (Average)	★★★★☆

Genotype included in evaluation

- SCAPIN
- URVILLE
- OXANE 142
- IONESCO
- VANINA
- REINETTE



SCAN ME FOR LATEST INDEX



Daughter

- A great choice for pedigree maidens.
- Progeny have excellent temperament.
- Daughters are milky.



Source ICBF July 23

Star Rating (within breed)	Economic Indexes	Euro value per progeny	Index reliability	Star Rating (across all beef breeds)
★★★★★	REPLACEMENT	€154	49% (Average)	★★★★★
★★★★★	TERMINAL	€172	57% (Average)	★★★★★
★★★★★	DAIRY BEEF	€159	53% (Average)	★★★★★
Calving Difficulty (births requiring considerable assistance; % 3 & 4)				
When Mated With:		%	Reliability	Calving Records
Beef Heifers		9.3%	45% (Average)	0
Beef Cows		3.9%	86% (Very high)	0

Star Rating (within breed)	Key profit traits	Index value	Trait reliability	Star Rating (across all beef breeds)
EXPECTED PROGENY PERFORMANCE				
★★★★★	Gestation Length (days)	2.8d	44% (Average)	★★★☆☆
★★★★☆	Docility (1-5 scale)	-0.08 scale	42% (Average)	★★★☆☆
★★★★★	Carcass weight (kg)	39.3kg	60% (High)	★★★★★
★★★★★	Carcass conformation (1-15 scale)	2.56 scale	55% (Average)	★★★★★
EXPECTED DAUGHTER BREEDING PERFORMANCE				
Daughter calving difficulty (% 3 & 4)		4.7%	63% (High)	
★★★★★	Daughter milk (kg)	5.7kg	55% (Average)	★★★★☆
★★★☆☆	Daughter calving interval (days)	1.7d	37% (Low)	★★★☆☆

Genotype included in evaluation

- ON-DIT
- CHATELAIN
- URANE
- SAFARA
- COPINE
- UTILE



SCAN ME FOR LATEST INDEX



Daughter

- One of the highest index LM bulls available for both Replacement & Terminal Index.
- Progeny are average in size, well-muscled and have great thickness through the body.
- Easy calving, suitable for second calvers.

PRE-ORDER

LM2242 EDAKKYA

PED

I.D.: LIMFRAM002350854301

DOB: 24-Aug-2009

MYOSTATIN STATUS: +/+ (Non-Carrier), Profit gene: F94L/F94L(2 Copies)



EDAKKYA

X Créallim

Bred by: GAEC Chanton, France

PRE-ORDER

LM4351 GRENACHE

PED

I.D.: LIMFRAM001935141686

DOB: 03-Nov-2011

MYOSTATIN STATUS: +/+ (Non-Carrier), Profit gene: F94L/F94L(2 Copies)



GRENACHE

X Créallim

Bred by: M SOFIMA MR CALDEMAISON

LIMOUSIN



Source ICBF July 23

Star Rating (within breed)	Economic Indexes	Euro value per progeny	Index reliability	Star Rating (across all beef breeds)
★★★★★	REPLACEMENT	€119	80% (Very high)	★★★★★
★★★★★	TERMINAL	€135	88% (Very high)	★★★★★
★★★★★	DAIRY BEEF	€99	80% (Very high)	★★★★★
Calving Difficulty (births requiring considerable assistance; % 3 & 4)				
When Mated With:	%	Reliability	Calving Records	
Beef Heifers	10.4%	78% (High)	55	
Beef Cows	3.3%	97% (Very high)	398	

Star Rating (within breed)	Key profit traits	Index value	Trait reliability	Star Rating (across all beef breeds)
EXPECTED PROGENY PERFORMANCE				
★★★★★	Gestation Length (days)	2.2d	97% (Very high)	★★★★★
★★★★★	Docility (1-5 scale)	-0.01 scale	95% (Very high)	★★★★★
★★★★★	Carcass weight (kg)	29.9kg	97% (Very high)	★★★★★
★★★★★	Carcass conformation (1-15 scale)	2.06 scale	96% (Very high)	★★★★★
EXPECTED DAUGHTER BREEDING PERFORMANCE				
	Daughter calving difficulty (% 3 & 4)	5.8%	76% (High)	
★★★★★	Daughter milk (kg)	1.9kg	86% (Very high)	★★★★★
★★★★★	Daughter calving interval (days)	0d	57% (Average)	★★★★★

Genotype included in evaluation

- └ RINTINTIN
- ALEX
- └ TENDRESSE
- └ URGEL
- BARBIE
- └ TSARINE



SCAN ME FOR LATEST INDEX

- Edakky ticks all the boxes -performance, shape, docility, fertility, gestation length.
- Easy calving, suitable for second calvers.
- Progeny are excellent, powerful and correct with good width through the body.
- Superb temperament.



Daughter, Tom Hickey



Source ICBF July 23

Star Rating (within breed)	Economic Indexes	Euro value per progeny	Index reliability	Star Rating (across all beef breeds)
★★★★★	REPLACEMENT	€176	79% (High)	★★★★★
★★★★★	TERMINAL	€132	91% (Very high)	★★★★★
★★★★★	DAIRY BEEF	€104	84% (Very high)	★★★★★
Calving Difficulty (births requiring considerable assistance; % 3 & 4)				
When Mated With:	%	Reliability	Calving Records	
Beef Heifers	6.0%	94% (Very high)	327	
Beef Cows	2.2%	97% (Very high)	260	

Star Rating (within breed)	Key profit traits	Index value	Trait reliability	Star Rating (across all beef breeds)
EXPECTED PROGENY PERFORMANCE				
★★★★★	Gestation Length (days)	5.2d	98% (Very high)	★★★★★
★★★★★	Docility (1-5 scale)	-0.02 scale	95% (Very high)	★★★★★
★★★★★	Carcass weight (kg)	20.9kg	96% (Very high)	★★★★★
★★★★★	Carcass conformation (1-15 scale)	2.22 scale	95% (Very high)	★★★★★
EXPECTED DAUGHTER BREEDING PERFORMANCE				
	Daughter calving difficulty (% 3 & 4)	4.2%	78% (High)	
★★★★★	Daughter milk (kg)	6kg	81% (Very high)	★★★★★
★★★★★	Daughter calving interval (days)	-1.4d	56% (Average)	★★★★★

Genotype included in evaluation

- └ EPSON
- TASTEVIN
- └ PAILLETTE
- └ AMIRAL
- DULCINEE
- └ VOLGA



SCAN ME FOR LATEST INDEX

- The perfect choice for your pedigree maidens.
- Grenache excels in calving ease, temperament & milk.
- One of the top bulls available for Replacement Index.



Genache Daughter, John Meehan, Clare

PRE-ORDER

LM4407 TWEEDDALE LENNOX

PED

I.D.: LIMGBRM00WJQ15-1696

DOB: 01-Apr-2015

MYOSTATIN STATUS: +/+ (Non-Carrier), Profit gene: F94L/F94L(2 Copies)



TWEEDDALE LENNOX

Bred by: John Watson, Bowsden Moor, Bowsden Berwick Upon Tweed Northumberland

PRE-ORDER

LM7599 MOEBIUS

PED

I.D.: LIMFRAM001217014722

DOB: 05-Oct-2016

MYOSTATIN STATUS: +/+ (Non-Carrier), Profit gene: F94L/F94L(2 Copies)



MOEBIUS

Bred by: GAEC DOMAINE LAURENS, France



Source ICBF July 23

Star Rating (within breed)	Economic Indexes	Euro value per progeny	Index reliability	Star Rating (across all beef breeds)
★★★★★	REPLACEMENT	€132	58% (Average)	★★★★★
★★★★★	TERMINAL	€163	79% (High)	★★★★★
★★★★★	DAIRY BEEF	€151	75% (High)	★★★★★
Calving Difficulty (births requiring considerable assistance; % 3 & 4)				
When Mated With:		%	Reliability	Calving Records
Beef Heifers		6.3%	87% (Very high)	153
Beef Cows		2.9%	94% (Very high)	259

Star Rating (within breed)	Key profit traits	Index value	Trait reliability	Star Rating (across all beef breeds)
EXPECTED PROGENY PERFORMANCE				
★★★★★	Gestation Length (days)	3.5d	97% (Very high)	★★★★★
★★★★★	Docility (1-5 scale)	-0.04 scale	84% (Very high)	★★★★★
★★★★★	Carcass weight (kg)	29.6kg	84% (Very high)	★★★★★
★★★★★	Carcass conformation (1-15 scale)	2.47 scale	80% (Very high)	★★★★★
EXPECTED DAUGHTER BREEDING PERFORMANCE				
Daughter calving difficulty (% 3 & 4)		4.0%	58% (Average)	
★★★★★	Daughter milk (kg)	0.9kg	45% (Average)	★★★★★
★★★★★	Daughter calving interval (days)	1.8d	42% (Average)	★★★★★

Genotype included in evaluation

- └─ WILODGE VANTASTIC
- GOLDIES GOLDMINE**
- └─ GOLDIES VITALITY
- └─ EMSLIES COLOSSUS
- EMSLIE HELEDD**
- └─ EMSLIES ELIN



SCAN ME FOR LATEST INDEX

- One of the best bulls available for use on pedigree maidens
- Progeny are excellent quality with superb temperament.
- Progeny are very well-balanced between skeletal and muscle development.



Lennox Son, Tom O`Leary, Killorglan, Co. Kerry



Source ICBF July 23

Star Rating (within breed)	Economic Indexes	Euro value per progeny	Index reliability	Star Rating (across all beef breeds)
★★★★★	REPLACEMENT	€137	50% (Average)	★★★★★
★★★★★	TERMINAL	€166	59% (Average)	★★★★★
★★★★★	DAIRY BEEF	€158	59% (Average)	★★★★★
Calving Difficulty (births requiring considerable assistance; % 3 & 4)				
When Mated With:		%	Reliability	Calving Records
Beef Heifers		3.5%	54% (Average)	5
Beef Cows		1.2%	89% (Very high)	49

Star Rating (within breed)	Key profit traits	Index value	Trait reliability	Star Rating (across all beef breeds)
EXPECTED PROGENY PERFORMANCE				
★★★★★	Gestation Length (days)	4.5d	85% (Very high)	★★★★★
★★★★★	Docility (1-5 scale)	-0.08 scale	43% (Average)	★★★★★
★★★★★	Carcass weight (kg)	36kg	58% (Average)	★★★★★
★★★★★	Carcass conformation (1-15 scale)	2.09 scale	53% (Average)	★★★★★
EXPECTED DAUGHTER BREEDING PERFORMANCE				
Daughter calving difficulty (% 3 & 4)		3.9%	63% (High)	
★★★★★	Daughter milk (kg)	4.1kg	50% (Average)	★★★★★
★★★★★	Daughter calving interval (days)	1.4d	39% (Low)	★★★★★

Genotype included in evaluation

- └─ REMIX
- CAMEOS**
- └─ VELSEUSE
- └─ USSE
- HELYA**
- └─ BETTI



SCAN ME FOR LATEST INDEX

- An excellent son of Cameos from the French Breeding programme.
- Progeny in France are very easily born with good muscle development.

PRE-ORDER

LM8109 PERCY

PED

I.D.: LIMFRAM008606287055

DOB: 09-Sep-2019

MYOSTATIN STATUS: +/+ (Non-Carrier), Profit gene: F94L/F94L(2 Copies)



Bred by: LEPA EPLEFPA MONTMORILLON, France

PRE-ORDER

LM7431 JURANCON

PED

I.D.: LIMFRAM002424384719

DOB: 21-Nov-2014

MYOSTATIN STATUS: +/+ (Non-Carrier), Profit gene: F94L/F94L(2 Copies)



Bred by: GAEC LACOUR, France

LIMOUSIN



Source ICBF July 23

Star Rating (within breed)	Economic Indexes	Euro value per progeny	Index reliability	Star Rating (across all beef breeds)
★★★★★	REPLACEMENT	€159	45% (Average)	★★★★★
★★★★★	TERMINAL	€150	51% (Average)	★★★★★
★★★★★	DAIRY BEEF	€128	52% (Average)	★★★★★
Calving Difficulty (births requiring considerable assistance; % 3 & 4)				
When Mated With:		%	Reliability	Calving Records
Beef Heifers		7.0%	51% (Average)	3
Beef Cows		2.8%	87% (Very high)	63

Star Rating (within breed)	Key profit traits	Index value	Trait reliability	Star Rating (across all beef breeds)
EXPECTED PROGENY PERFORMANCE				
★★★★★	Gestation Length (days)	1.6d	88% (Very high)	★★★★★
★★★★★	Docility (1-5 scale)	-0.03 scale	43% (Average)	★★★★★
★★★★★	Carcass weight (kg)	27.5kg	44% (Average)	★★★★★
★★★★★	Carcass conformation (1-15 scale)	2.03 scale	43% (Average)	★★★★★
EXPECTED DAUGHTER BREEDING PERFORMANCE				
Daughter calving difficulty (% 3 & 4)		4.2%	57% (Average)	
★★★★★	Daughter milk (kg)	6kg	42% (Average)	★★★★★
★★★★★	Daughter calving interval (days)	2.1d	37% (Low)	★★★★★

Genotype included in evaluation

- URVILLE
- EREBOS
- VANINA
- CAMEOS
- MAVA MON
- HAVANA



SCAN ME FOR LATEST INDEX



PERCY

- New limousin sire from France.
- The shortest gestation Limousin sire available.



Source ICBF July 23

Star Rating (within breed)	Economic Indexes	Euro value per progeny	Index reliability	Star Rating (across all beef breeds)
★★★★★	REPLACEMENT	€115	52% (Average)	★★★★★
★★★★★	TERMINAL	€144	59% (Average)	★★★★★
★★★★★	DAIRY BEEF	€131	58% (Average)	★★★★★
Calving Difficulty (births requiring considerable assistance; % 3 & 4)				
When Mated With:		%	Reliability	Calving Records
Beef Heifers		8.5%	50% (Average)	1
Beef Cows		4.7%	86% (Very high)	5

Star Rating (within breed)	Key profit traits	Index value	Trait reliability	Star Rating (across all beef breeds)
EXPECTED PROGENY PERFORMANCE				
★★★★★	Gestation Length (days)	5.1d	71% (High)	★★★★★
★★★★★	Docility (1-5 scale)	-0.09 scale	44% (Average)	★★★★★
★★★★★	Carcass weight (kg)	33.5kg	61% (High)	★★★★★
★★★★★	Carcass conformation (1-15 scale)	2.24 scale	56% (Average)	★★★★★
EXPECTED DAUGHTER BREEDING PERFORMANCE				
Daughter calving difficulty (% 3 & 4)		4.1%	64% (High)	
★★★★★	Daughter milk (kg)	6.3kg	54% (Average)	★★★★★
★★★★★	Daughter calving interval (days)	2.7d	39% (Low)	★★★★★

Genotype included in evaluation

- REMIX
- CAMEOS
- VELSEUSE
- TASTEVIN
- ELLE
- COCOTTE



SCAN ME FOR LATEST INDEX

- Jurancon comes from the French maternal programme.
- Progeny are average in size with excellent weight for age and shape.
- A milk improver.



Daughter

PRE-ORDER

LM7428 HECTOR GD

PED

I.D.: LIMFRAM003615353586

DOB: 20-Nov-2012

MYOSTATIN STATUS: +/+ (Non-Carrier), Profit gene: F94L/F94L(2 Copies)



HECTOR GD



Bred by: Anthony Guillot_Patureau, France

PRE-ORDER

S3301 TELFERS MUNSTER

PED

I.D.: LIMGBRM107023100679

DOB: 11-Jun-2016

MYOSTATIN STATUS: NT821/+ (one copy) Profit gene: F94L/(+1 Copy)



TELFERS MUNSTER



Bred by: Malcolm Telfer, UK



Source ICBF July 23

Star Rating (within breed)	Economic Indexes	Euro value per progeny	Index reliability	Star Rating (across all beef breeds)
★★★★★	REPLACEMENT	€121	47% (Average)	★★★★★
★★★★★	TERMINAL	€162	53% (Average)	★★★★★
★★★★★	DAIRY BEEF	€162	52% (Average)	★★★★★
Calving Difficulty (births requiring considerable assistance; % 3 & 4)				
When Mated With:		%	Reliability	Calving Records
Beef Heifers		9.1%	41% (Average)	1
Beef Cows		4.5%	91% (Very high)	21

Star Rating (within breed)	Key profit traits	Index value	Trait reliability	Star Rating (across all beef breeds)
EXPECTED PROGENY PERFORMANCE				
★★★★★	Gestation Length (days)	2.6d	78% (High)	★★★★★
★★★★★	Docility (1-5 scale)	-0.04 scale	57% (Average)	★★★★★
★★★★★	Carcass weight (kg)	28.2kg	48% (Average)	★★★★★
★★★★★	Carcass conformation (1-15 scale)	3.03 scale	42% (Average)	★★★★★
EXPECTED DAUGHTER BREEDING PERFORMANCE				
Daughter calving difficulty (% 3 & 4)		5.4%	60% (High)	
★★★★★	Daughter milk (kg)	6.7kg	53% (Average)	★★★★★
★★★★★	Daughter calving interval (days)	3.5d	36% (Low)	★★★★★

Genotype included in evaluation

- SAUVIGNON
- CHARMEUR
- ULNA
- VIRAGE
- CALINETTE
- ULTRABELLE



SCAN ME FOR LATEST INDEX

- Use Hector GD for maximum shape.
- No. 3 LM bull available on carcass conformation.
- Works best on tall cows, he will add the shape.



Daughter, Philip Crowe, Co. Cavan



Source ICBF July 23

Star Rating (within breed)	Economic Indexes	Euro value per progeny	Index reliability	Star Rating (across all beef breeds)
★★★★★	REPLACEMENT	€118	59% (Average)	★★★★★
★★★★★	TERMINAL	€158	79% (High)	★★★★★
★★★★★	DAIRY BEEF	€143	75% (High)	★★★★★
Calving Difficulty (births requiring considerable assistance; % 3 & 4)				
When Mated With:		%	Reliability	Calving Records
Beef Heifers		6.2%	63% (High)	9
Beef Cows		3.1%	93% (Very high)	236

Star Rating (within breed)	Key profit traits	Index value	Trait reliability	Star Rating (across all beef breeds)
EXPECTED PROGENY PERFORMANCE				
★★★★★	Gestation Length (days)	3.2d	94% (Very high)	★★★★★
★★★★★	Docility (1-5 scale)	0.02 scale	78% (High)	★★★★★
★★★★★	Carcass weight (kg)	24.4kg	85% (Very high)	★★★★★
★★★★★	Carcass conformation (1-15 scale)	2.81 scale	82% (Very high)	★★★★★
EXPECTED DAUGHTER BREEDING PERFORMANCE				
Daughter calving difficulty (% 3 & 4)		4.6%	62% (High)	
★★★★★	Daughter milk (kg)	-1.6kg	44% (Average)	★★★★★
★★★★★	Daughter calving interval (days)	2.7d	47% (Average)	★★★★★

Genotype included in evaluation

- 5331 SAPHIR
- LODGE HAMLET
- LODGE VIOLET
- GOLDIES COMET
- TELFERS IMAGINATION
- GOLDIES FLORIST



SCAN ME FOR LATEST INDEX

- Telfers Munster is a proven sire of commercial and pedigree show champions and sale toppers with remarkable docility.
- He transmits exceptional shape with style and breed character.
- Top 1% of the LM breed on muscle development.



ARDLEA ROLEX, Son

CH6490 ORBI

PED

DOB:
17-Sep-2018

MYOSTATIN STATUS:
Q204X/+ (1 Copy)

I.D.: CHAFRAM007122079738



Bred by: Michel Bouchot, France

CHAROLAIS



Star Rating (within breed)	Economic Indexes	Euro value per progeny	Index reliability	Star Rating (across all beef breeds)
★★★★★	REPLACEMENT	€92	53% (Average)	★★★★★
★★★★★	TERMINAL	€145	73% (High)	★★★★★
★★★★★	DAIRY BEEF	€98	72% High	★★★★★

Calving Difficulty (births requiring considerable assistance; % 3 & 4)			
When Mated With:	%	Reliability	Calving Records
Beef Heifers	6.9%	54% (Average)	18
Beef Cows	4.3%	98% (Very high)	1173

Star Rating (within breed)	Key profit traits	Index value	Trait reliability	Star Rating (across all beef breeds)
EXPECTED PROGENY PERFORMANCE				
★★★★★	Gestation Length (days)	2.5d	99% (Very high)	★★★★★
★★★★★	Docility (1-5 scale)	0.07 scale	95% (Very high)	★★★★★
★★★★★	Carcass weight (kg)	38.8kg	75% (High)	★★★★★
★★★★★	Carcass conformation (1-15 scale)	1.86 scale	68% (High)	★★★★★
EXPECTED DAUGHTER BREEDING PERFORMANCE				
	Daughter calving difficulty (% 3 & 4)	4.2%	53% (Average)	
★★★★★	Daughter milk (kg)	0.4kg	40% (Average)	★★★★★
★★★★★	Daughter calving interval (days)	-1.9d	38% (Low)	★★★★★



Orbi Daughter Aghafad Tessa, Paddy Farrelly, Tullamore show 2023



Orbi son bred by JP Shaughnessy, Headford, Co. Galway

Genotype included in evaluation

PROGRESSIVE ATAXIA: NON CARRIER

- Orbi is the easiest calving Charolais bull standing in Irish AI, suitable for pedigree maidens.
- Pedigree and commercial progeny have excellent shape, weight for age and style.
- Use to breed superior quality weanlings.



SCAN ME FOR LATEST INDEX

URFE
HAMEL
 FANFARE
 CALOGERO
FR7122096710
 FR7121613212

CH7503 CLOONRADOON RICKY

PED

DOB:
19-Jan-2020

MYOSTATIN STATUS:
Q204X/+ (1 Copy)

I.D.: CHAIRLM223835660543

CLOONRADOON RICKY



Bred by: Anthony Mcdermott, Strokestown, Co. Roscommon



Star Rating (within breed)	Economic Indexes	€uro value per progeny	Index reliability	Star Rating (across all beef breeds)
★★★★★	REPLACEMENT	€67	55% (Average)	★★★★★
★★★★★	TERMINAL	€128	62% (High)	★★★★★
★★★★★	DAIRY BEEF	€66	63% High	★★★★★

Calving Difficulty (births requiring considerable assistance; % 3 & 4)			
When Mated With:	%	Reliability	Calving Records
Beef Heifers	16.3%	56% (Average)	4
Beef Cows	9.2%	98% (Very high)	1182

Star Rating (within breed)	Key profit traits	Index value	Trait reliability	Star Rating (across all beef breeds)
EXPECTED PROGENY PERFORMANCE				
★★★★★	Gestation Length (days)	2.7d	98% (Very high)	★★★★★
★★★★★	Docility (1-5 scale)	0.01 scale	80% (Very high)	★★★★★
★★★★★	Carcass weight (kg)	36.3kg	55% (Average)	★★★★★
★★★★★	Carcass conformation (1-15 scale)	2.2 scale	50% (Average)	★★★★★
EXPECTED DAUGHTER BREEDING PERFORMANCE				
	Daughter calving difficulty (% 3 & 4)	2.4%	65% (High)	
★★★★★	Daughter milk (kg)	-4.2kg	49% (Average)	★★★★★
★★★★★	Daughter calving interval (days)	-2.2d	48% (Average)	★★★★★



Ricky daughter, Mashantucket Theodora, 1st prize winner Tullamore '23, A. Woods, Cavan



Son, Pat and Barry Farrell, Skreen, Co Meath

Genotype included in evaluation

PROGRESSIVE ATAXIA: NON CARRIER

- Huge satisfaction with Ricky progeny among quality seeking suckler farmers.
- Progeny are powerful with exceptional muscle development.
- Use to produce top-end weanlings with extra shape, weight & class.



SCAN ME FOR LATEST INDEX

- └ TINOR
- └ FISTON
- └ BARONNE
- └ CAVELANDS FENIAN
- └ CLOONRADOON NICOLE
- └ CLOONRADOON IZZY ET

CH4251 GOLDSTAR LUDWIG PED
 I.D.: CHAIRLM331457440370
 DOB: 17-Oct-2015 | MYOSTATIN STATUS: +/+ (Non-Carrier)



GOLDSTAR LUDWIG
 Bred by: Martin Ryan, Thurles, Co. Tipperary

CH4321 LAPON PED
 I.D.: CHAFRAM005706129452
 DOB: 20-Dec-2015 | MYOSTATIN STATUS: +/+ (Non-Carrier)



LAPON
 Bred by: EARL Ofal, France

CALVING EASE AVERAGE FINISHING
 Source ICBF July 23

Star Rating (within breed)	Economic Indexes	Euro value per progeny	Index reliability	Star Rating (across all beef breeds)
★★★★★	REPLACEMENT	€101	87% (Very high)	★★★★★
★★★★★	TERMINAL	€132	93% (Very high)	★★★★★
★★★★★	DAIRY BEEF	€-12	84% (Very high)	★★★★★
Calving Difficulty (births requiring considerable assistance; % 3 & 4)				
When Mated With:		%	Reliability	Calving Records
Beef Heifers		12.8%	85% (Very high)	48
Beef Cows		7.3%	99% (Very high)	4724

Star Rating (within breed)	Key profit traits	Index value	Trait reliability	Star Rating (across all beef breeds)
EXPECTED PROGENY PERFORMANCE				
★★★★★	Gestation Length (days)	2.1d	99% (Very high)	★★★★★
★★★★★	Docility (1-5 scale)	0.04 scale	99% (Very high)	★★★★★
★★★★★	Carcass weight (kg)	43.4kg	99% (Very high)	★★★★★
★★★★★	Carcass conformation (1-15 scale)	1.85 scale	99% (Very high)	★★★★★
EXPECTED DAUGHTER BREEDING PERFORMANCE				
Daughter calving difficulty (% 3 & 4)		3.9%	82% (Very high)	
★★★★★	Daughter milk (kg)	-7.4kg	90% (Very high)	★★★★★
★★★★★	Daughter calving interval (days)	-5.9d	69% (High)	★★★★★

Genotype included in evaluation

PROGRESSIVE ATAXIA: NON CARRIER

- └ INDICE
- NELSON**
- └ ETOILE
- └ GOLDSTAR ECHO
- GOLDSTAR INDIRA**
- └ GOLDSTAR FLORENCE ET



SCAN ME FOR LATEST INDEX

- 5 star bull for age at slaughter.
- Progeny have good weight for age.
- Works best on cows with good muscle development.



Ludwig daughter, John Meehan, Co. Clare

CALVING EASE EASY WEANLING FINISHING
 Source ICBF July 23

Star Rating (within breed)	Economic Indexes	Euro value per progeny	Index reliability	Star Rating (across all beef breeds)
★★★★★	REPLACEMENT	€91	79% (High)	★★★★★
★★★★★	TERMINAL	€161	94% (Very high)	★★★★★
★★★★★	DAIRY BEEF	€121	93% (Very high)	★★★★★
Calving Difficulty (births requiring considerable assistance; % 3 & 4)				
When Mated With:		%	Reliability	Calving Records
Beef Heifers		8.1%	95% (Very high)	495
Beef Cows		5.0%	99% (Very high)	11483

Star Rating (within breed)	Key profit traits	Index value	Trait reliability	Star Rating (across all beef breeds)
EXPECTED PROGENY PERFORMANCE				
★★★★★	Gestation Length (days)	2.1d	99% (Very high)	★★★★★
★★★★★	Docility (1-5 scale)	0.07 scale	99% (Very high)	★★★★★
★★★★★	Carcass weight (kg)	42.2kg	99% (Very high)	★★★★★
★★★★★	Carcass conformation (1-15 scale)	2.25 scale	99% (Very high)	★★★★★
EXPECTED DAUGHTER BREEDING PERFORMANCE				
Daughter calving difficulty (% 3 & 4)		5.4%	68% (High)	
★★★★★	Daughter milk (kg)	-3.1kg	76% (High)	★★★★★
★★★★★	Daughter calving interval (days)	0.1d	49% (Average)	★★★★★

Genotype included in evaluation

PROGRESSIVE ATAXIA: CARRIER

- └ BUSINESS
- HOWARD**
- └ ARCADE
- └ TRYPHON
- DOUCE**
- └ USSIA



SCAN ME FOR LATEST INDEX

- What a legend! Only 5 % calving difficulty on cows and in the top 1% for Carcass Weight and the top 3% for Carcass Conformation across breed.
- One of the best proven Charolais bulls available anywhere, It's no wonder he was the most used Charolais bull in Ireland in 2022.
- The ultimate Charolais sire; calving ease, performance & quality.



Lapon Son, Overall Senior Champion, Galloway Superstar, Christmas Cracker 2022, Michael Kiernan

CH8334 CORBAUN RORY

PED

DOB: 12-Jun-2020

MYOSTATIN STATUS: Q204X/+ (1 Copy), Profit gene: F94L/+ (1 Copy)

I.D.: CHAIRLM214372420272



CORBAUN RORY

Bred by: Liam Keogh, Dring, Co. Longford



Star Rating (within breed)	Economic Indexes	Euro value per progeny	Index reliability	Star Rating (across all beef breeds)
★★★★★	REPLACEMENT	€90	51% (Average)	★★★★★
★★★★★	TERMINAL	€138	54% (Average)	★★★★★
★☆☆☆☆	DAIRY BEEF	€2	54% Average	★☆☆☆☆

Source ICBF July 23



Corbaun Rory Calf

Calving Difficulty (births requiring considerable assistance; % 3 & 4)			
When Mated With:	%	Reliability	Calving Records
Beef Heifers	15.2%	50% (Average)	0
Beef Cows	10.0%	88% (Very high)	74



Daughter, Liam Keogh, Co. Longford

Star Rating (within breed)	Key profit traits	Index value	Trait reliability	Star Rating (across all beef breeds)
EXPECTED PROGENY PERFORMANCE				
★★★★★	Gestation Length (days)	1.7d	85% (Very high)	★★★★★
★★★★★	Docility (1-5 scale)	0.08 scale	46% (Average)	★★★★★
★★★★★	Carcass weight (kg)	44kg	47% (Average)	★★★★★
★★★★★	Carcass conformation (1-15 scale)	1.98 scale	46% (Average)	★★★★★
EXPECTED DAUGHTER BREEDING PERFORMANCE				
	Daughter calving difficulty (% 3 & 4)	6.1%	62% (High)	
★★★★★	Daughter milk (kg)	0.9kg	46% (Average)	★★★★★
★★★☆☆	Daughter calving interval (days)	-0.5d	45% (Average)	★★★☆☆

Genotype included in evaluation

PROGRESSIVE ATAXIA: NON CARRIER

- Huge satisfaction with Rory's first calves.
- They are long, powerful, wide cattle with exceptional weight for age & shape.
- A super terminal sire.



SCAN ME FOR LATEST INDEX

- └ BALTHAYOCK ADONIS
- └ BLELACK DIGGER
- └ GALCANTRAY ABBEY
- └ CLYTH DIPLOMAT
- └ CORBAUN LILLY ALLEN
- └ CORBAUN CAT

CH8571 RECIF

PED

DOB:
27-Sep-2020

MYOSTATIN STATUS:
Q204X/+ (1 Copy)

I.D.: CHAFRAM004243243590

CHAROLAIS



Bred by: Thierry Frecon, France



Star Rating (within breed)	Economic Indexes	€uro value per progeny	Index reliability	Star Rating (across all beef breeds)
★★★★★	REPLACEMENT	€98	38% (Low)	★★★★★
★★★★★	TERMINAL	€137	41% (Average)	★★★★★
★★★★★	DAIRY BEEF	€74	40% Average	★★★★★

Source ICFB July 23



RECIF

Calving Difficulty (births requiring considerable assistance; % 3 & 4)			
When Mated With:	%	Reliability	Calving Records
Beef Heifers	7.0%	35% (Low)	0
Beef Cows	4.5%	67% (High)	0

Star Rating (within breed)	Key profit traits	Index value	Trait reliability	Star Rating (across all beef breeds)
EXPECTED PROGENY PERFORMANCE				
★★★★★	Gestation Length (days)	1.4d	34% (Low)	★★★★★
★★★★★	Docility (1-5 scale)	0.07 scale	33% (Low)	★★★★★
★★★★★	Carcass weight (kg)	36.4kg	38% (Low)	★★★★★
★★★★★	Carcass conformation (1-15 scale)	1.51 scale	38% (Low)	★★★★★
EXPECTED DAUGHTER BREEDING PERFORMANCE				
	Daughter calving difficulty (% 3 & 4)	3.6%	51% (Average)	
★★★★★	Daughter milk (kg)	-0.4kg	38% (Low)	★★★★★
★★★★★	Daughter calving interval (days)	-1.2d	32% (Low)	★★★★★



Sire, Jarret, French proven calving ease sire

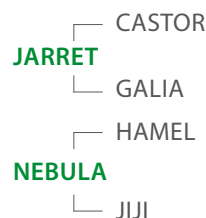
Genotype included in evaluation

PROGRESSIVE ATAXIA: NON CARRIER

- Recif is an outstanding example of the Charolais breed.
- He is powerful, long, wide, correct and full of beef.
- His pedigree is a full sire stack of proven French AI bulls: Jarret X Hamel X Azelier X Populaire.
- Performance tested in France.



SCAN ME FOR
LATEST INDEX



CH6493 OMEGA

PED

DOB:
21-Oct-2018

MYOSTATIN STATUS:
Q204X/+ (1 Copy)

I.D.: CHAFRAM007122259390



Sire-Eperndy

Bred by: Touillon Didier, France



Star Rating (within breed)	Economic Indexes	€uro value per progeny	Index reliability	Star Rating (across all beef breeds)
★★★★★	REPLACEMENT	€113	50% (Average)	★★★★★
★★★★☆	TERMINAL	€128	66% (High)	★★★★★
★★★★☆	DAIRY BEEF	€44	63% High	★★★★★

Source ICFB July 23

Calving Difficulty (births requiring considerable assistance; % 3 & 4)			
When Mated With:	%	Reliability	Calving Records
Beef Heifers	13.3%	43% (Average)	6
Beef Cows	7.6%	95% (Very high)	355



Daughter, Tully Performance Testing Centre

Star Rating (within breed)	Key profit traits	Index value	Trait reliability	Star Rating (across all beef breeds)
EXPECTED PROGENY PERFORMANCE				
★★★★☆	Gestation Length (days)	2.6d	94% (Very high)	★★★★★
★★★★☆	Docility (1-5 scale)	-0.03 scale	88% (Very high)	★★★★★
★★★★☆	Carcass weight (kg)	34.1kg	63% (High)	★★★★★
★★★★★	Carcass conformation (1-15 scale)	2.12 scale	55% (Average)	★★★★★
EXPECTED DAUGHTER BREEDING PERFORMANCE				
	Daughter calving difficulty (% 3 & 4)	3.4%	53% (Average)	
★★★★★	Daughter milk (kg)	4.2kg	41% (Average)	★★★★★
★★★★★	Daughter calving interval (days)	-3.4d	36% (Low)	★★★★★

Genotype included in evaluation

PROGRESSIVE ATAXIA: CARRIER

- Omega is making a name for himself as a weanling specialist.
- Progeny have excellent muscle development - super back-ends and tops.
- Omega progeny have excellent performance which is no surprise given their phenomenal length.



SCAN ME FOR
LATEST INDEX

- BASTION
- EPERNAY
- UTILITE
- VOIMO
- ISADORA
- BALEINE

CH8568 RAMEAU

PED

DOB:
17-Sep-2020

MYOSTATIN STATUS:
+/+ (Non-Carrier), Profit gene: F94L/F94L(2 Copies)

I.D.: CHAFRAM004243243565



Bred by: GAEC Beaulieu Vignol Hubert, France

CHAROLAIS



Star Rating (within breed)	Economic Indexes	€uro value per progeny	Index reliability	Star Rating (across all beef breeds)
★★★★★	REPLACEMENT	€90	37% (Low)	★★★★★
★★★★★	TERMINAL	€101	41% (Average)	★★★★★
★★★★★	DAIRY BEEF	€-9	40% Average	★★★★★

Source ICFB July 23



Sire, Giono

Calving Difficulty (births requiring considerable assistance; % 3 & 4)			
When Mated With:	%	Reliability	Calving Records
Beef Heifers	7.3%	30% (Low)	0
Beef Cows	4.1%	68% (High)	0

Star Rating (within breed)	Key profit traits	Index value	Trait reliability	Star Rating (across all beef breeds)
EXPECTED PROGENY PERFORMANCE				
★★★★★	Gestation Length (days)	2.4d	31% (Low)	★★★★★
★★★★★	Docility (1-5 scale)	0.09 scale	32% (Low)	★★★★★
★★★★★	Carcass weight (kg)	25.1kg	39% (Low)	★★★★★
★★★★★	Carcass conformation (1-15 scale)	1.33 scale	38% (Low)	★★★★★



Giono Daughter

EXPECTED DAUGHTER BREEDING PERFORMANCE			
	Daughter calving difficulty (% 3 & 4)	4.6%	49% (Average)
★★★★★	Daughter milk (kg)	1.8kg	38% (Low)
★★★★★	Daughter calving interval (days)	-2.6d	31% (Low)

Genotype included in evaluation

PROGRESSIVE ATAXIA: NON CARRIER

- A super well-bred bull with a low reliability index as it is a new bloodline.
- A son of the renowned Giono, one of the most used bulls in France in recent years, renowned for excellent muscle development and performance.
- His French genomics predictors are excellent for calving ease and all the carcass traits.



SCAN ME FOR LATEST INDEX

- ARAGON
- GIONO
- VIGNETTE
- ENRICO P
- LUMIERE
- HERITIERE

CH8577 SULTAN

PED

DOB:
14-Nov-2020

MYOSTATIN STATUS:
+ / + (Non-Carrier)

I.D.: CHAFRAM005706362510



SULTAN

Bred by: GAEC Albert, France



Star Rating (within breed)	Economic Indexes	Euro value per progeny	Index reliability	Star Rating (across all beef breeds)
★★★★★	REPLACEMENT	€96	38% (Low)	★★★★★
★★★★★	TERMINAL	€125	42% (Average)	★★★★★
★★★★★	DAIRY BEEF	€53	41% Average	★★★★★

Source: ICBF July 23



Sire, Jarrett

Calving Difficulty (births requiring considerable assistance; % 3 & 4)			
When Mated With:	%	Reliability	Calving Records
Beef Heifers	9.6%	34% (Low)	0
Beef Cows	3.7%	68% (High)	0



Grandsire, Castor

Star Rating (within breed)	Key profit traits	Index value	Trait reliability	Star Rating (across all beef breeds)
EXPECTED PROGENY PERFORMANCE				
★★★★★	Gestation Length (days)	1.5d	34% (Low)	★★★★★
★★★★★	Docility (1-5 scale)	0.09 scale	33% (Low)	★★★★★
★★★★★	Carcass weight (kg)	34.8kg	40% (Average)	★★★★★
★★★★★	Carcass conformation (1-15 scale)	1.29 scale	39% (Low)	★★★★★
EXPECTED DAUGHTER BREEDING PERFORMANCE				
	Daughter calving difficulty (% 3 & 4)	4.1%	51% (Average)	
★★★★★	Daughter milk (kg)	0.8kg	39% (Low)	★★★★★
★★★★★	Daughter calving interval (days)	-1.9d	32% (Low)	★★★★★

Genotype included in evaluation

PROGRESSIVE ATAXIA: NON CARRIER

- An excellent quality well-bred bull with a low reliability index as it is a new bloodline.
- Use him and you will not be disappointed - he comes from superior proven French AI sires and had an excellent performance test.
- His French genomics predict that he will be an all-rounder excelling in both maternal and terminal traits with average calving.



SCAN ME FOR LATEST INDEX

- └ CASTOR
- └ JARRET
- └ GALIA
- └ GIONO
- └ OPERATION
- └ ELYSEE

CH8580 ROMARIN Pp

PED

DOB:
23-Sep-2020

MYOSTATIN STATUS:
+ / + (Non-Carrier)

I.D.: CHAFRAM005455645698

CHAROLAIS



Bred by: SCEA STE Genevieve, France



Star Rating (within breed)	Economic Indexes	€uro value per progeny	Index reliability	Star Rating (across all beef breeds)
★★★★★	REPLACEMENT	€91	35% (Low)	★★★★★
★★★★★	TERMINAL	€109	37% (Low)	★★★★★
★★★★★	DAIRY BEEF	€14	37% Low	★★★★★

Source (CBF July 23)



ROMARIN

Calving Difficulty (births requiring considerable assistance: % 3 & 4)			
When Mated With:	%	Reliability	Calving Records
Beef Heifers	13.1%	31% (Low)	0
Beef Cows	5.3%	62% (High)	0

Star Rating (within breed)	Key profit traits	Index value	Trait reliability	Star Rating (across all beef breeds)
EXPECTED PROGENY PERFORMANCE				
★★★★★	Gestation Length (days)	2.8d	30% (Low)	★★★★★
★★★★★	Docity (1-5 scale)	0.05 scale	30% (Low)	★★★★★
★★★★★	Carcass weight (kg)	29kg	34% (Low)	★★★★★
★★★★★	Carcass conformation (1-15 scale)	1.62 scale	35% (Low)	★★★★★
EXPECTED DAUGHTER BREEDING PERFORMANCE				
	Daughter calving difficulty (% 3 & 4)	4.4%	49% (Average)	
★★★★★	Daughter milk (kg)	-1.3kg	34% (Low)	★★★★★
★★★★★	Daughter calving interval (days)	-2.6d	30% (Low)	★★★★★



ROMARIN

Genotype included in evaluation

PROGRESSIVE ATAXIA: NON CARRIER

- A super well-bred bull with a low reliability index as it is a new bloodline.
- Use him and you will not be disappointed - he comes from superior proven French AI sires and had an excellent performance test.
- His French genomics predict that he will be easy calving with good performance and muscle development.



SCAN ME FOR
LATEST INDEX

- GHANA PP
- NIGER PP
- HELLINE
- CALOGERO
- JASMINE
- BADINE

CH8262 GRANGWOOD ROYAL OAK ET PED

I.D.: CHAIRLM218967980283

DOB: 22-Oct-2020

MYOSTATIN STATUS: Q204X/+ (1 Copy)



GRANGWOOD ROYAL OAK ET



Bred by: Jeremiah O'Keefe, Knocklong, Co. Limerick

CH6175 NERON Pp PED

I.D.: CHAFRAM002138511700

DOB: 24-Oct-2017

MYOSTATIN STATUS: Q204X/+ (1 Copy)



NERON P



Bred by: EARL Coiffu, France



Source ICBF July 23

Star Rating (within breed)	Economic Indexes	Euro value per progeny	Index reliability	Star Rating (across all beef breeds)
★★★★★	REPLACEMENT	€-23	53% (Average)	★★★★★
★★★★★	TERMINAL	€114	59% (Average)	★★★★★
★★★★★	DAIRY BEEF	€-34	58% (Average)	★★★★★
Calving Difficulty (births requiring considerable assistance; % 3 & 4)				
When Mated With:		%	Reliability	Calving Records
Beef Heifers		20.9%	50% (Average)	0
Beef Cows		13.8%	91% (Very high)	145

Star Rating (within breed)	Key profit traits	Index value	Trait reliability	Star Rating (across all beef breeds)
EXPECTED PROGENY PERFORMANCE				
★★★★★	Gestation Length (days)	3.9d	84% (Very high)	★★★★★
★★★★★	Docility (1-5 scale)	0.08 scale	57% (Average)	★★★★★
★★★★★	Carcass weight (kg)	41.6kg	54% (Average)	★★★★★
★★★★★	Carcass conformation (1-15 scale)	2.35 scale	50% (Average)	★★★★★
EXPECTED DAUGHTER BREEDING PERFORMANCE				
Daughter calving difficulty (% 3 & 4)		4.3%	64% (High)	
★★★★★	Daughter milk (kg)	-8.3kg	49% (Average)	★★★★★
★★★★★	Daughter calving interval (days)	-1.8d	46% (Average)	★★★★★

Genotype included in evaluation

PROGRESSIVE ATAXIA: NON CARRIER

- TEXAN-GIE
- GOLDSTAR ECHO**
- SHEEHILLS ULA
- ENFIELD PICASSO
- GRANGWOOD EMERALD**
- GRANGWOOD UNIFLAMME



SCAN ME FOR LATEST INDEX

- Royal Oak's first progeny are exceptional quality.
- Progeny have superb muscle development and style.
- Excellent weight for age.
- Suitable for mature cows only.



Daughter, Vincent McGrane



Source ICBF July 23

Star Rating (within breed)	Economic Indexes	Euro value per progeny	Index reliability	Star Rating (across all beef breeds)
★★★★★	REPLACEMENT	€93	53% (Average)	★★★★★
★★★★★	TERMINAL	€144	76% (High)	★★★★★
★★★★★	DAIRY BEEF	€34	69% (High)	★★★★★
Calving Difficulty (births requiring considerable assistance; % 3 & 4)				
When Mated With:		%	Reliability	Calving Records
Beef Heifers		10.4%	34% (Low)	1
Beef Cows		4.5%	91% (Very high)	147

Star Rating (within breed)	Key profit traits	Index value	Trait reliability	Star Rating (across all beef breeds)
EXPECTED PROGENY PERFORMANCE				
★★★★★	Gestation Length (days)	2.6d	82% (Very high)	★★★★★
★★★★★	Docility (1-5 scale)	-0.04 scale	76% (High)	★★★★★
★★★★★	Carcass weight (kg)	40.3kg	85% (Very high)	★★★★★
★★★★★	Carcass conformation (1-15 scale)	1.76 scale	82% (Very high)	★★★★★
EXPECTED DAUGHTER BREEDING PERFORMANCE				
Daughter calving difficulty (% 3 & 4)		3.8%	51% (Average)	
★★★★★	Daughter milk (kg)	-1.5kg	40% (Average)	★★★★★
★★★★★	Daughter calving interval (days)	-1d	39% (Low)	★★★★★

Genotype included in evaluation

PROGRESSIVE ATAXIA: CARRIER

- CELSIUS
- JOLIMOME P**
- G38
- AZELIER
- JANIE**
- FILLETTE



SCAN ME FOR LATEST INDEX

- Neron Pp progeny have excellent weight for age, +40kg carcass weight.
- Progeny are long, wide and very correct.
- Heterozygous polled - 50% of the progeny will be polled (no horns).



Jolimome P Daughter

PRE-ORDER

CH6121 MERLIN Pp

PED

I.D.: CHAFRAM006950902377

DOB: 03-Nov-2016

MYOSTATIN STATUS: Q204X/+ (1 Copy)



MERLIN P

Bred by: EARL POYET DAVID, France

PRE-ORDER

CH8112 MESSMER

PED

I.D.: CHAFRAM005343801681

DOB: 07-Dec-2016

MYOSTATIN STATUS: +/- (Non-Carrier)



MESSMER

Bred by: M COCANDEAU, France

CHAROLAIS



Source ICBF July 23

Star Rating (within breed)	Economic Indexes	Euro value per progeny	Index reliability	Star Rating (across all beef breeds)
★★★★★	REPLACEMENT	€137	44% (Average)	★★★★★
★★★★★	TERMINAL	€172	57% (Average)	★★★★★
★★★★★	DAIRY BEEF	€118	51% (Average)	★★★★★
Calving Difficulty (births requiring considerable assistance; % 3 & 4)				
When Mated With:		%	Reliability	Calving Records
Beef Heifers		12.1%	31% (Low)	0
Beef Cows		7.8%	82% (Very high)	1

Star Rating (within breed)	Key profit traits	Index value	Trait reliability	Star Rating (across all beef breeds)
EXPECTED PROGENY PERFORMANCE				
★★★★★	Gestation Length (days)	3.1d	36% (Low)	★★★★★
★★★★★	Docility (1-5 scale)	0.05 scale	30% (Low)	★★★★★
★★★★★	Carcass weight (kg)	49.7kg	63% (High)	★★★★★
★★★★★	Carcass conformation (1-15 scale)	2.2 scale	63% (High)	★★★★★
EXPECTED DAUGHTER BREEDING PERFORMANCE				
Daughter calving difficulty (% 3 & 4)		4.3%	49% (Average)	
★★★★★	Daughter milk (kg)	6.3kg	50% (Average)	★★★★★
★★★★★	Daughter calving interval (days)	-1.9d	30% (Low)	★★★★★

Genotype included in evaluation

PROGRESSIVE ATAXIA: NON CARRIER

- FORGEOT P
- ICEBERG PP
- FLAMME P
- ROBUSTIN
- FEERIE
- BUVETTE



SCAN ME FOR LATEST INDEX



Son, Rio

- One of the highest bulls available on Terminal Index.
- Progeny are average in size with excellent shape. One of the highest bulls in France for carcass conformation.
- Start your polled programme with this super quality heterozygous polled bull.



Source ICBF July 23

Star Rating (within breed)	Economic Indexes	Euro value per progeny	Index reliability	Star Rating (across all beef breeds)
★★★★★	REPLACEMENT	€180	52% (Average)	★★★★★
★★★★★	TERMINAL	€174	65% (High)	★★★★★
★★★★★	DAIRY BEEF	€116	60% (High)	★★★★★
Calving Difficulty (births requiring considerable assistance; % 3 & 4)				
When Mated With:		%	Reliability	Calving Records
Beef Heifers		4.4%	47% (Average)	3
Beef Cows		2.5%	89% (Very high)	48

Star Rating (within breed)	Key profit traits	Index value	Trait reliability	Star Rating (across all beef breeds)
EXPECTED PROGENY PERFORMANCE				
★★★★★	Gestation Length (days)	0.2d	80% (Very high)	★★★★★
★★★★★	Docility (1-5 scale)	0.06 scale	42% (Average)	★★★★★
★★★★★	Carcass weight (kg)	45.5kg	69% (High)	★★★★★
★★★★★	Carcass conformation (1-15 scale)	1.6 scale	67% (High)	★★★★★
EXPECTED DAUGHTER BREEDING PERFORMANCE				
Daughter calving difficulty (% 3 & 4)		3.9%	55% (Average)	
★★★★★	Daughter milk (kg)	7.4kg	53% (Average)	★★★★★
★★★★★	Daughter calving interval (days)	-1.5d	37% (Low)	★★★★★

Genotype included in evaluation

PROGRESSIVE ATAXIA: NON CARRIER

- UTRILLO MIC
- CHIC
- URSULA
- CASTOR
- JANVILLE
- BISQUE



SCAN ME FOR LATEST INDEX



MESSMER Daughter

- No. 2 Charolais bull available on Replacement Index and No. 7 on Terminal Index.
- One of the best bulls available from France for milk production.

PRE-ORDER

CH2216 FIRST

PED

I.D.: CHAFRAM007613879841

DOB: 29-Oct-2010

MYOSTATIN STATUS: Q204X/+ (1 Copy)



FIRST



Bred by: COOP DYNAM IS, France

PRE-ORDER

CH6118 GIONO

PED

I.D.: CHAFRAM002130301025

DOB: 08-Jan-2011

MYOSTATIN STATUS: +/- (Non-Carrier)



GIONO



Bred by: GAEC de Pergeot, France



Source ICBF July 23

Star Rating (within breed)	Economic Indexes	Euro value per progeny	Index reliability	Star Rating (across all beef breeds)
★★★★★	REPLACEMENT	€106	79% (High)	★★★★★
★★★★★	TERMINAL	€163	87% (Very high)	★★★★★
★★★★★	DAIRY BEEF	€63	80% (Very high)	★★★★★
Calving Difficulty (births requiring considerable assistance; % 3 & 4)				
When Mated With:		%	Reliability	Calving Records
Beef Heifers		8.9%	77% (High)	46
Beef Cows		3.4%	97% (Very high)	163

Star Rating (within breed)	Key profit traits	Index value	Trait reliability	Star Rating (across all beef breeds)
EXPECTED PROGENY PERFORMANCE				
★★★★★	Gestation Length (days)	0.5d	95% (Very high)	★★★★★
★★★★★	Docility (1-5 scale)	0.08 scale	89% (Very high)	★★★★★
★★★★★	Carcass weight (kg)	41.5kg	96% (Very high)	★★★★★
★★★★★	Carcass conformation (1-15 scale)	2.03 scale	95% (Very high)	★★★★★
EXPECTED DAUGHTER BREEDING PERFORMANCE				
Daughter calving difficulty (% 3 & 4)		2.8%	74% (High)	
★★★★★	Daughter milk (kg)	0.3kg	86% (Very high)	★★★★★
★★★★★	Daughter calving interval (days)	0.8d	56% (Average)	★★★★★

Genotype included in evaluation

PROGRESSIVE ATAXIA: NON CARRIER

- IGLOO
- SYLVANER
- JUPE
- PINAY
- ANETH
- URACILE



SCAN ME FOR LATEST INDEX

- One of the best bulls available from France for weight for age and muscle development.
- Suitable for pedigree 2nd calvers.
- Sire of the top priced bull at the 2023 Christmas Cracker, Tawny Super Dude.



First Son, Tawny Super Dude, €10,200 Charolais Christmas Cracker 2022.



Source ICBF July 23

Star Rating (within breed)	Economic Indexes	Euro value per progeny	Index reliability	Star Rating (across all beef breeds)
★★★★★	REPLACEMENT	€117	50% (Average)	★★★★★
★★★★★	TERMINAL	€102	63% (High)	★★★★★
★★★★★	DAIRY BEEF	€31	54% (Average)	★★★★★
Calving Difficulty (births requiring considerable assistance; % 3 & 4)				
When Mated With:		%	Reliability	Calving Records
Beef Heifers		13.0%	33% (Low)	1
Beef Cows		4.9%	91% (Very high)	8

Star Rating (within breed)	Key profit traits	Index value	Trait reliability	Star Rating (across all beef breeds)
EXPECTED PROGENY PERFORMANCE				
★★★★★	Gestation Length (days)	2.6d	33% (Low)	★★★★★
★★★★★	Docility (1-5 scale)	0.11 scale	37% (Low)	★★★★★
★★★★★	Carcass weight (kg)	32.5kg	71% (High)	★★★★★
★★★★★	Carcass conformation (1-15 scale)	0.95 scale	69% (High)	★★★★★
EXPECTED DAUGHTER BREEDING PERFORMANCE				
Daughter calving difficulty (% 3 & 4)		4.4%	52% (Average)	
★★★★★	Daughter milk (kg)	5.1kg	64% (High)	★★★★★
★★★★★	Daughter calving interval (days)	-2.7d	34% (Low)	★★★★★

Genotype included in evaluation

PROGRESSIVE ATAXIA: NON CARRIER

- OSTANI
- ARAGON
- ROXELANE
- PADIRAC
- VIGNETTE
- STARLETTE



SCAN ME FOR LATEST INDEX

- Giono is one of the best bulls available from France for muscle development and performance.
- Progeny are powerful with exceptional weight for age and shape.
- Progeny have excellent legs & feet.



Daughter

PRE-ORDER

CH6298 HAMEL

PED

I.D.: CHAFRAM001444349112

DOB: 28-Oct-2012

MYOSTATIN STATUS: Q204X/+ (1 Copy)



HAMEL

Bred by: GAEC Maquet James, France



Source ICBF July 23

Star Rating (within breed)	Economic Indexes	Euro value per progeny	Index reliability	Star Rating (across all beef breeds)
★★★★★	REPLACEMENT	€138	55% (Average)	★★★★★
★★★★★	TERMINAL	€194	67% (High)	★★★★★
★★★★★	DAIRY BEEF	€103	64% (High)	★★★★★
Calving Difficulty (births requiring considerable assistance; % 3 & 4)				
When Mated With:		%	Reliability	Calving Records
Beef Heifers		9.7%	46% (Average)	5
Beef Cows		3.7%	93% (Very high)	38

Star Rating (within breed)	Key profit traits	Index value	Trait reliability	Star Rating (across all beef breeds)
EXPECTED PROGENY PERFORMANCE				
★★★★★	Gestation Length (days)	1.9d	85% (Very high)	★★★★★
★★★★★	Docility (1-5 scale)	0.06 scale	69% (High)	★★★★★
★★★★★	Carcass weight (kg)	55.4kg	71% (High)	★★★★★
★★★★★	Carcass conformation (1-15 scale)	1.91 scale	71% (High)	★★★★★
EXPECTED DAUGHTER BREEDING PERFORMANCE				
Daughter calving difficulty (% 3 & 4)		4.0%	61% (High)	
★★★★★	Daughter milk (kg)	2.5kg	69% (High)	★★★★★
★★★★★	Daughter calving interval (days)	-2.5d	35% (Low)	★★★★★

Genotype included in evaluation

PROGRESSIVE ATAXIA: NON CARRIER

- OURAL
- URFE
- OLIVE
- SYLVANER
- FANFARE
- 3906



SCAN ME FOR LATEST INDEX

- No. 2 Charolais sire available on Terminal Index.
- Hamel is a super fully proven French AI sire, he has many sons in French AI and is also the sire of Orbi.
- Progeny are long with good width through the body and square back-ends.



Orbi CH6490, Son

PRE-ORDER

CH6115 MELOMAN

PED

I.D.: CHAFRAM004516406245

DOB: 02-Oct-2016

MYOSTATIN STATUS: +/- (Non-Carrier)



MELOMAN

Bred by: GAEC de la Chaudronnerie



Source ICBF July 23

Star Rating (within breed)	Economic Indexes	Euro value per progeny	Index reliability	Star Rating (across all beef breeds)
★★★★★	REPLACEMENT	€130	47% (Average)	★★★★★
★★★★★	TERMINAL	€155	59% (Average)	★★★★★
★★★★★	DAIRY BEEF	€100	55% (Average)	★★★★★
Calving Difficulty (births requiring considerable assistance; % 3 & 4)				
When Mated With:		%	Reliability	Calving Records
Beef Heifers		10.8%	37% (Low)	2
Beef Cows		4.8%	82% (Very high)	0

Star Rating (within breed)	Key profit traits	Index value	Trait reliability	Star Rating (across all beef breeds)
EXPECTED PROGENY PERFORMANCE				
★★★★★	Gestation Length (days)	0.6d	56% (Average)	★★★★★
★★★★★	Docility (1-5 scale)	0.01 scale	38% (Low)	★★★★★
★★★★★	Carcass weight (kg)	46.2kg	65% (High)	★★★★★
★★★★★	Carcass conformation (1-15 scale)	1.28 scale	65% (High)	★★★★★
EXPECTED DAUGHTER BREEDING PERFORMANCE				
Daughter calving difficulty (% 3 & 4)		4.8%	57% (Average)	
★★★★★	Daughter milk (kg)	3.4kg	49% (Average)	★★★★★
★★★★★	Daughter calving interval (days)	-2.4d	32% (Low)	★★★★★

Genotype included in evaluation

PROGRESSIVE ATAXIA: NON CARRIER

- URFE
- HAMEL
- FANFARE
- ETRANGE
- HISTOIRE
- CIVELLE



SCAN ME FOR LATEST INDEX

- The perfect choice for use on your maiden heifers, he is heavily used in France on maidens including those calving at two years of age.
- Meloman ticks all the boxes; calving ease, growth, shape and good legs & feet.
- Above average for milk production.



Hamel, Sire

CHAROLAIS

SI4350 RUBYJEN HERE'S JOHNNY

PED

DOB:
20-Apr-2016MYOSTATIN STATUS:
+ / + (Non-Carrier)

I.D.: SIMIRLM241180580801



RUBYJEN HERE'S JOHNNY



Bred by: Seamus Aherne, Cappamore, Co. Limerick

CALVING
EASE
AVERAGE

WEANLING



FINISHING



REPLACEMENT

Star Rating (within breed)	Economic Indexes	Euro value per progeny	Index reliability	Star Rating (across all beef breeds)
★★★★★	REPLACEMENT	€166	77% (High)	★★★★★
★★★★★	TERMINAL	€99	86% (Very high)	★★★★★
★★★★★	DAIRY BEEF	€69	80% Very high	★★★★★

Source ICFB July 23

Calving Difficulty (births requiring considerable assistance; % 3 & 4)			
When Mated With:	%	Reliability	Calving Records
Beef Heifers	9.6%	64% (High)	9
Beef Cows	3.4%	93% (Very high)	204

Star Rating (within breed)	Key profit traits	Index value	Trait reliability	Star Rating (across all beef breeds)
EXPECTED PROGENY PERFORMANCE				
★★★★★	Gestation Length (days)	1.3d	93% (Very high)	★★★★★
★★★★★	Docity (1-5 scale)	0 scale	92% (Very high)	★★★★★
★★★★★	Carcass weight (kg)	24.9kg	95% (Very high)	★★★★★
★★★★★	Carcass conformation (1-15 scale)	1.6 scale	93% (Very high)	★★★★★
EXPECTED DAUGHTER BREEDING PERFORMANCE				
	Daughter calving difficulty (% 3 & 4)	4.7%	72% (High)	
★★★★★	Daughter milk (kg)	6.7kg	75% (High)	★★★★★
★★★★★	Daughter calving interval (days)	-3.1d	56% (Average)	★★★★★



Dam



Rubyjen Heres Johnny Daughter, Ross Brady

Genotype included in evaluation

- Here's Johnny is a very complete bull strong in both maternal and terminal traits.
- A proven bull excelling in all the important traits for profitable suckling; carcass weight, conformation, milk, fertility & daughter calving ability.
- Very functional progeny with excellent legs & feet.

SCAN ME FOR
LATEST INDEX

— GLEBEFARM TYSON
— CELTIC BENNY ET
 — CELTIC TINA
 — MARBELHILL LIAM
— TOWERHILL RUBY- JEN
 — TOWERHILL JENNY

SI7491 LEEHERD LYNX 364

PED

DOB:
30-Aug-2019

MYOSTATIN STATUS:
+ / + (Non-Carrier)

I.D.: SIMIRLM223060180364

SIMMENTAL



LEEHERD LYNX 364

Bred by: John Finnegan, Coachford, Co. Cork



CALVING EASE AVERAGE



FEMALE SEXED

Star Rating (within breed)	Economic Indexes	€uro value per progeny	Index reliability	Star Rating (across all beef breeds)
★★★★★	REPLACEMENT	€133	51% (Average)	★★★★★
★★★★★	TERMINAL	€91	60% (High)	★★★★★
★★★★★	DAIRY BEEF	€61	63% High	★★★★★

Source (CFR July 23)



LEEHERD LYNX 364

Calving Difficulty (births requiring considerable assistance; % 3 & 4)			
When Mated With:	%	Reliability	Calving Records
Beef Heifers	8.0%	70% (High)	36
Beef Cows	4.0%	93% (Very high)	222

Star Rating (within breed)	Key profit traits	Index value	Trait reliability	Star Rating (across all beef breeds)
EXPECTED PROGENY PERFORMANCE				
★★★★★	Gestation Length (days)	3.6d	97% (Very high)	★★★★★
★★★★★	Docility (1-5 scale)	0.04 scale	60% (High)	★★★★★
★★★★★	Carcass weight (kg)	27.6kg	55% (Average)	★★★★★
★★★★★	Carcass conformation (1-15 scale)	1.62 scale	48% (Average)	★★★★★
EXPECTED DAUGHTER BREEDING PERFORMANCE				
	Daughter calving difficulty (% 3 & 4)	6.4%	58% (Average)	
★★★★★	Daughter milk (kg)	10.2kg	43% (Average)	★★★★★
★★★★★	Daughter calving interval (days)	-1.2d	39% (Low)	★★★★★



Leeherd Legend 336, ¾ brother to Lynx^o

Genotype included in evaluation

- Great satisfaction with Lynx first calves, they were easily born and very lively at birth.
- Lynx comes from a great dam line at Leeherd.
- He is the same magic cross of G Mac and Dubai which produced Leeherd Legend, 2022 Royal Cornwall Male Champion & Devon County show overall Simmental Champion.



SCAN ME FOR LATEST INDEX

- DERMOTSTOWN DELBOY ET
- **DERMOTSTOWN G MAC**
- DERMOTSTOWN D NICELADY
- ANATRIM DUBAI
- **LEEHERD FRUITY 244**
- LEEHERD CHERRY

SI2469 LISNACRANN FIFTY CENT PED

I.D.: SIMIRLM272111730322

DOB: 25-Oct-2014

MYOSTATIN STATUS: +/+ (Non-Carrier)



LISNACRANN FIFTY CENT

Bred by: Michael Oliver, Swinford, Co. Mayo

SI4250 LIS-NA-RI GUCCI PED

I.D.: SIMIRLM311239540243

DOB: 20-Oct-2015

MYOSTATIN STATUS: +/+ (Non-Carrier)



LIS-NA-RI GUCCI

Bred by: Padraig Hanley, Lisnari, Co. Roscommon



Source ICBF July 23

Star Rating (within breed)	Economic Indexes	Euro value per progeny	Index reliability	Star Rating (across all beef breeds)
★★★★★	REPLACEMENT	€178	98% (Very high)	★★★★★
★★★☆☆	TERMINAL	€59	96% (Very high)	★★★☆☆
★★★☆☆	DAIRY BEEF	€65	95% (Very high)	★★★☆☆
Calving Difficulty (births requiring considerable assistance; % 3 & 4)				
When Mated With:		%	Reliability	Calving Records
Beef Heifers		9.1%	99% (Very high)	1449
Beef Cows		3.6%	99% (Very high)	5749

Star Rating (within breed)	Key profit traits	Index value	Trait reliability	Star Rating (across all beef breeds)
EXPECTED PROGENY PERFORMANCE				
★★★★★	Gestation Length (days)	0.5d	99% (Very high)	★★★★★
★★★★★	Docility (1-5 scale)	0.11 scale	99% (Very high)	★★★★★
★★★☆☆	Carcass weight (kg)	14.6kg	99% (Very high)	★★★☆☆
★★★☆☆	Carcass conformation (1-15 scale)	0.98 scale	99% (Very high)	★★★☆☆
EXPECTED DAUGHTER BREEDING PERFORMANCE				
Daughter calving difficulty (% 3 & 4)		5.1%	98% (Very high)	
★★★☆☆	Daughter milk (kg)	7.1kg	99% (Very high)	★★★★★
★★★★★	Daughter calving interval (days)	-7.2d	95% (Very high)	★★★★★

Genotype included in evaluation

- └ HADRIAN
- HURTI
- └ GELSE
- └ MONADUFF JEWEL
- LISNACRAN PERFECT START
- └ HILLCREST LIMELIGHT



SCAN ME FOR LATEST INDEX

- A proven cow maker, No. 3 SI available on Replacement index @ 98% reliability.
- Daughters are exceptionally docile, functional working cows with excellent fertility, No. 1 SIM available for calving interval.
- Fifty cent has all the important traits to produce profitable cows; milk, fertility, calving ability & docility.



Fifty Cent Daughter, McKees Co. Donegal



Source ICBF July 23

Star Rating (within breed)	Economic Indexes	Euro value per progeny	Index reliability	Star Rating (across all beef breeds)
★★★★★	REPLACEMENT	€160	85% (Very high)	★★★★★
★★★☆☆	TERMINAL	€71	93% (Very high)	★★★☆☆
★★★☆☆	DAIRY BEEF	€77	91% (Very high)	★★★☆☆
Calving Difficulty (births requiring considerable assistance; % 3 & 4)				
When Mated With:		%	Reliability	Calving Records
Beef Heifers		8.1%	93% (Very high)	253
Beef Cows		3.1%	98% (Very high)	1329

Star Rating (within breed)	Key profit traits	Index value	Trait reliability	Star Rating (across all beef breeds)
EXPECTED PROGENY PERFORMANCE				
★★★★★	Gestation Length (days)	2.2d	99% (Very high)	★★★★★
★★★★★	Docility (1-5 scale)	0.08 scale	98% (Very high)	★★★★★
★★★☆☆	Carcass weight (kg)	19kg	99% (Very high)	★★★☆☆
★★★★★	Carcass conformation (1-15 scale)	1.65 scale	98% (Very high)	★★★★★
EXPECTED DAUGHTER BREEDING PERFORMANCE				
Daughter calving difficulty (% 3 & 4)		5.3%	83% (Very high)	
★★★☆☆	Daughter milk (kg)	5.9kg	86% (Very high)	★★★★★
★★★★★	Daughter calving interval (days)	-3.8d	66% (High)	★★★★★

Genotype included in evaluation

- └ DERRYCALLAGHAN HAMILTON
- GLEBEFARM TYSON
- └ GLEBEFARM NATASHA
- └ SEEPA TEE JAY
- DUFF CAPRI
- └ DUFF WILLOW



SCAN ME FOR LATEST INDEX

- The perfect cow maker, average in size, good conformation, docility, milk, fertility & calving ability
- Gucci progeny are early maturing and well muscled
- Great satisfaction with his daughters



Bridgemount Leo, Lis Na Ri Gucci son, William O Riordan Cork

SI2152 CURAHEEN EARP PED
 I.D.: SIMIRLM171059810478
 DOB: 28-Dec-2013 | MYOSTATIN STATUS: +/+ (Non-Carrier)



Bred by: Wall family, Newcastle, Co.Dublin

SI8520 PORTROYAL MR BULL PP PED
 I.D.: SIMIRLM216745910569
 DOB: 04-Mar-2020 | MYOSTATIN STATUS: +/+ (Non-Carrier)



Bred by: John Hession, Ballinrobe, Co. Mayo



Source ICBF July 23

Star Rating (within breed)	Economic Indexes	Euro value per progeny	Index reliability	Star Rating (across all beef breeds)
★★★★★	REPLACEMENT	€192	98% (Very high)	★★★★★
★★★★★	TERMINAL	€91	96% (Very high)	★★★★★
★★★★★	DAIRY BEEF	€73	95% (Very high)	★★★★★
Calving Difficulty (births requiring considerable assistance; % 3 & 4)				
When Mated With:		%	Reliability	Calving Records
Beef Heifers		8.4%	98% (Very high)	935
Beef Cows		3.6%	99% (Very high)	7789

Star Rating (within breed)	Key profit traits	Index value	Trait reliability	Star Rating (across all beef breeds)
EXPECTED PROGENY PERFORMANCE				
★★★★★	Gestation Length (days)	1.7d	99% (Very high)	★★★★★
★★★★★	Docility (1-5 scale)	0.07 scale	99% (Very high)	★★★★★
★★★★★	Carcass weight (kg)	22.8kg	99% (Very high)	★★★★★
★★★★★	Carcass conformation (1-15 scale)	1.56 scale	99% (Very high)	★★★★★
EXPECTED DAUGHTER BREEDING PERFORMANCE				
Daughter calving difficulty (% 3 & 4)		4.5%	98% (Very high)	
★★★★★	Daughter milk (kg)	5.4kg	99% (Very high)	★★★★★
★★★★★	Daughter calving interval (days)	-7d	96% (Very high)	★★★★★

Genotype included in evaluation

- └ HILLCREST CHAMPION
- └ **CURAHEEN VIO (ET)**
- └ RACEVIEW MERLE-BEAUTY
- └ KILBRIDE FARM MILLAR
- └ **BLACKFORD SISKIN**
- └ BLACKFORD MAVIS



SCAN ME FOR LATEST INDEX

- No. 1 SI available for Replacement Index, No. 2 SI available for Calving Interval.
- Earp is the best bull available to breed replacements without compromising on terminal traits.
- Earp excels in all the commercially important traits, carcass weight, conformation, milk, fertility, daughter calving ability & docility.



Daughter.



Source ICBF July 23

Star Rating (within breed)	Economic Indexes	Euro value per progeny	Index reliability	Star Rating (across all beef breeds)
★★★★★	REPLACEMENT	€159	41% (Average)	★★★★★
★★★★★	TERMINAL	€84	45% (Average)	★★★★★
★★★★★	DAIRY BEEF	€101	45% (Average)	★★★★★
Calving Difficulty (births requiring considerable assistance; % 3 & 4)				
When Mated With:		%	Reliability	Calving Records
Beef Heifers		6.5%	35% (Low)	0
Beef Cows		1.3%	65% (High)	0

Star Rating (within breed)	Key profit traits	Index value	Trait reliability	Star Rating (across all beef breeds)
EXPECTED PROGENY PERFORMANCE				
★★★★★	Gestation Length (days)	0.6d	42% (Average)	★★★★★
★★★★★	Docility (1-5 scale)	0.09 scale	39% (Low)	★★★★★
★★★★★	Carcass weight (kg)	14.9kg	44% (Average)	★★★★★
★★★★★	Carcass conformation (1-15 scale)	1.14 scale	42% (Average)	★★★★★
EXPECTED DAUGHTER BREEDING PERFORMANCE				
Daughter calving difficulty (% 3 & 4)		4.6%	55% (Average)	
★★★★★	Daughter milk (kg)	6.8kg	40% (Average)	★★★★★
★★★★★	Daughter calving interval (days)	-2.2d	36% (Low)	★★★★★

Genotype included in evaluation

- └ FEDAL JURA PP
- └ **PORTROYAL JIM BOB P**
- └ PORTROYAL DAI
- └ ARDADONEY BON JOVI 10(P)12UK
- └ **PORTROYAL ETO PP**
- └ ARDADONEY VELMA(P) IMP `12 UK



SCAN ME FOR LATEST INDEX

- Mr Bulls first calves are due this Autumn.
- This is an exciting easy fleshing, well-muscled homozygous polled bull.
- His dam is a very fertile cow with an excellent udder and a consistent breeder of quality.



PORTROYAL MR BULL PP

SA6346 HIBOU

PED

I.D.: SALFRAM001935062312

DOB: 24-Feb-2012

MYOSTATIN STATUS: +/- (Non-Carrier)



HIBOU

Bred by: M GARCELON PIERRE, France

SA4604 KNOTTOWN ROY

PED

I.D.: SALIRLM371214651745

DOB: 15-Aug-2016

MYOSTATIN STATUS: +/- (Non-Carrier)



KNOTTOWN ROY

Bred by: Richard Fortune, Wexford



Source ICBF July 23

Star Rating (within breed)	Economic Indexes	Euro value per progeny	Index reliability	Star Rating (across all beef breeds)
★★★★★	REPLACEMENT	€150	52% (Average)	★★★★★
★★★★★	TERMINAL	€93	68% (High)	★★★★★
★★★★★	DAIRY BEEF	€119	69% (High)	★★★★★
Calving Difficulty (births requiring considerable assistance; % 3 & 4)				
When Mated With:	%	Reliability	Calving Records	
Beef Heifers	8.7%	56% (Average)	17	
Beef Cows	2.6%	81% (Very high)	7	

Star Rating (within breed)	Key profit traits	Index value	Trait reliability	Star Rating (across all beef breeds)
EXPECTED PROGENY PERFORMANCE				
★★★★★	Gestation Length (days)	0.1d	92% (Very high)	★★★★★
★★★★★	Docility (1-5 scale)	-0.12 scale	75% (High)	★★★★★
★★★★★	Carcass weight (kg)	15.2kg	74% (High)	★★★★★
★★★★★	Carcass conformation (1-15 scale)	1.16 scale	69% (High)	★★★★★
EXPECTED DAUGHTER BREEDING PERFORMANCE				
	Daughter calving difficulty (% 3 & 4)	5.0%	52% (Average)	
★★★★★	Daughter milk (kg)	7.8kg	47% (Average)	★★★★★
★★★★★	Daughter calving interval (days)	-2.3d	37% (Low)	★★★★★

Genotype included in evaluation

TITAN
 OUEST
 JOVIALE
 STAR
 BARONNE
 SOFIA



SCAN ME FOR LATEST INDEX

- Great satisfaction with Hibou daughters in Ireland and France.
- Progeny have excellent weight for age and muscle development.
- Hibou daughters are great cows with sufficient milk and good calving ability.



Daughter



Source ICBF July 23

Star Rating (within breed)	Economic Indexes	Euro value per progeny	Index reliability	Star Rating (across all beef breeds)
★★★★★	REPLACEMENT	€238	86% (Very high)	★★★★★
★★★★★	TERMINAL	€108	95% (Very high)	★★★★★
★★★★★	DAIRY BEEF	€146	93% (Very high)	★★★★★
Calving Difficulty (births requiring considerable assistance; % 3 & 4)				
When Mated With:	%	Reliability	Calving Records	
Beef Heifers	5.0%	99% (Very high)	1858	
Beef Cows	1.7%	98% (Very high)	1143	

Star Rating (within breed)	Key profit traits	Index value	Trait reliability	Star Rating (across all beef breeds)
EXPECTED PROGENY PERFORMANCE				
★★★★★	Gestation Length (days)	0.2d	99% (Very high)	★★★★★
★★★★★	Docility (1-5 scale)	-0.02 scale	99% (Very high)	★★★★★
★★★★★	Carcass weight (kg)	20.1kg	99% (Very high)	★★★★★
★★★★★	Carcass conformation (1-15 scale)	1.04 scale	99% (Very high)	★★★★★
EXPECTED DAUGHTER BREEDING PERFORMANCE				
	Daughter calving difficulty (% 3 & 4)	4.9%	83% (Very high)	
★★★★★	Daughter milk (kg)	8.5kg	86% (Very high)	★★★★★
★★★★★	Daughter calving interval (days)	-6.2d	65% (High)	★★★★★

Genotype included in evaluation

KNOTTOWN KATE
 UNION
 BEGUIN
 SARLETTE
 BURON (FR 07)
 USANCE (FR 05)



SCAN ME FOR LATEST INDEX

- Proven cow maker, No. 1 bull available on Replacement Index.
- Roy has proven himself to be a superstar, easy calving, suitable for maidens and excellent quality males and females.
- Roy's daughters have all the traits needed for a profitable easy-care suckler cow - docility, milk, calving ability, fertility & good terminal traits.



Sligo Rachel, Reserve Female Champion Tullamore '17

AU4683 TURLOUGHMORE MAGNIFICENT

PED

DOB:
20-Jan-2017

MYOSTATIN STATUS:
Profit gene: F94L/F94L(2 Copies)

I.D.: AUBIRLM181464730595



Bred by: Kevin O' Brien, Athenry, Co. Galway



Star Rating (within breed)	Economic Indexes	€uro value per progeny	Index reliability	Star Rating (across all beef breeds)
★★★★★	REPLACEMENT	€207	77% (High)	★★★★★
★★★★★	TERMINAL	€123	92% (Very high)	★★★★★
★★★★★	DAIRY BEEF	€166	92% Very high	★★★★★

Source (CFE) July 23



Daughter, Ross Brady

Calving Difficulty (births requiring considerable assistance; % 3 & 4)			
When Mated With:	%	Reliability	Calving Records
Beef Heifers	6.6%	95% (Very high)	466
Beef Cows	2.6%	97% (Very high)	741



Daughter, Ross Brady

Star Rating (within breed)	Key profit traits	Index value	Trait reliability	Star Rating (across all beef breeds)
EXPECTED PROGENY PERFORMANCE				
★★★★★	Gestation Length (days)	0.6d	99% (Very high)	★★★★★
★★★★★	Docility (1-5 scale)	0.09 scale	98% (Very high)	★★★★★
★★★★★	Carcass weight (kg)	18.9kg	99% (Very high)	★★★★★
★★★★★	Carcass conformation (1-15 scale)	1.8 scale	99% (Very high)	★★★★★
EXPECTED DAUGHTER BREEDING PERFORMANCE				
	Daughter calving difficulty (% 3 & 4)	5.6%	71% (High)	
★★★★★	Daughter milk (kg)	3kg	73% (High)	★★★★★
★★★★★	Daughter calving interval (days)	-7.7d	54% (Average)	★★★★★

Genotype included in evaluation

- No. 1 AU available on Replacement Index
- Magnificent excels in many traits both terminal and maternal traits.
- Magnificent is a high performance sire with good age at slaughter, finishing earlier than their herdmates.



SCAN ME FOR LATEST INDEX

- └ ANDALOUS
- └ **DESPAGNOU**
- └ ROUZETTE
- └ JOHNSTOWN CALUM 25
- └ **GARVANAUGH 10**
- └ GARVANAUGH BERRELL

ZGH HURRICANE GONZO PED
 I.D.: PARIRLM271913420067
 DOB: 28-May-2011 | MYOSTATIN STATUS: NT821/NT821 (2 copies)



Bred by: James Higgins, Claremorris, Co. Mayo

BA2308 STONELEA INZAGI PED
 I.D.: BAQIRLM311056340079
 DOB: 05-Apr-2014 | MYOSTATIN STATUS: +/- (Non-Carrier)



Bred by: Oliver Naughton, Athlone, Co. Westmeath

Star Rating (within breed)	Economic Indexes	Euro value per progeny	Index reliability	Star Rating (across all beef breeds)
★★★★★	REPLACEMENT	€100	90% (Very high)	★★★★★
★★★★★	TERMINAL	€107	93% (Very high)	★★★★★
★★★★★	DAIRY BEEF	€44	85% (Very high)	★★★★★
Calving Difficulty (births requiring considerable assistance; % 3 & 4)				
When Mated With:		%	Reliability	Calving Records
Beef Heifers		15.2%	85% (Very high)	95
Beef Cows		7.2%	98% (Very high)	876
Star Rating (within breed)	Key profit traits	Index value	Trait reliability	Star Rating (across all beef breeds)
EXPECTED PROGENY PERFORMANCE				
★★★★★	Gestation Length (days)	6d	98% (Very high)	★★★★★
★★★★★	Docility (1-5 scale)	0.02 scale	98% (Very high)	★★★★★
★★★★★	Carcass weight (kg)	20.4kg	99% (Very high)	★★★★★
★★★★★	Carcass conformation (1-15 scale)	2.32 scale	99% (Very high)	★★★★★
EXPECTED DAUGHTER BREEDING PERFORMANCE				
Daughter calving difficulty (% 3 & 4)		6.7%	88% (Very high)	
★★★★★	Daughter milk (kg)	0.2kg	94% (Very high)	★★★★★
★★★★★	Daughter calving interval (days)	-2.4d	79% (High)	★★★★★

Genotype included in evaluation

- SCAR
- DERE NOEL
- SCARLET
- SOCRATE
- VAILLANTE
- RENONCULE



SCAN ME FOR LATEST INDEX

- Gonzo transmits excellent shape - top 2% across breed for carcass conformation.
- Excellent feed efficiency - top 1% within and across breed for feed intake.



ZGH Heifer

Star Rating (within breed)	Economic Indexes	Euro value per progeny	Index reliability	Star Rating (across all beef breeds)
★★★★★	REPLACEMENT	€66	83% (Very high)	★★★★★
★★★★★	TERMINAL	€110	90% (Very high)	★★★★★
★★★★★	DAIRY BEEF	€87	85% (Very high)	★★★★★
Calving Difficulty (births requiring considerable assistance; % 3 & 4)				
When Mated With:		%	Reliability	Calving Records
Beef Heifers		11.7%	86% (Very high)	89
Beef Cows		7.0%	98% (Very high)	922
Star Rating (within breed)	Key profit traits	Index value	Trait reliability	Star Rating (across all beef breeds)
EXPECTED PROGENY PERFORMANCE				
★★★★★	Gestation Length (days)	5.9d	98% (Very high)	★★★★★
★★★★★	Docility (1-5 scale)	-0.01 scale	97% (Very high)	★★★★★
★★★★★	Carcass weight (kg)	25.2kg	99% (Very high)	★★★★★
★★★★★	Carcass conformation (1-15 scale)	2.11 scale	98% (Very high)	★★★★★
EXPECTED DAUGHTER BREEDING PERFORMANCE				
Daughter calving difficulty (% 3 & 4)		3.9%	78% (High)	
★★★★★	Daughter milk (kg)	-6.6kg	85% (Very high)	★★★★★
★★★★★	Daughter calving interval (days)	-2d	63% (High)	★★★★★

Genotype included in evaluation

- ASHTON LODGE TYSON
- SEAVIEW BARNEY
- SEAVIEW TWINKLE
- SHAN VALLEY DANCER
- SEAVIEW GEMMA
- SEAVIEW AIMEE



SCAN ME FOR LATEST INDEX

- Inzagi is a proven high performance terminal sire.
- Progeny are long, correct and very well-muscled.
- Use to add length, shape & style.



Stonelea Inzaghi Calf, Bred by Ollie Walsh

AA8472 TUBRIDMORE TWOMEY

PED

DOB:
15-Aug-2020

MYOSTATIN STATUS:
+ / + (Non-Carrier)

I.D.: AANIRLM214641830715



Tubridmore Twomey

Bred by: Denis Twomey, Causeway, Co Kerry

ABERDEEN ANGUS



Star Rating (within breed)	Economic Indexes	€uro value per progeny	Index reliability	Star Rating (across all beef breeds)
★★★★★	REPLACEMENT	€97	44% (Average)	★★★★★
★★★★★	TERMINAL	€86	49% (Average)	★★★★★
★★★★★	DAIRY BEEF	€162	61% High	★★★★★

Source (CFB) July 23



Dam of Tubridmore Twomey

Calving Difficulty (births requiring considerable assistance; % 3 & 4)			
When Mated With:	%	Reliability	Calving Records
Beef Heifers	3.7%	49% (Average)	1
Beef Cows	1.2%	71% (High)	6



Daughter, Denis Twomey, Co. Kerry

Star Rating (within breed)	Key profit traits	Index value	Trait reliability	Star Rating (across all beef breeds)
EXPECTED PROGENY PERFORMANCE				
★★★★★	Gestation Length (days)	-3.2d	97% (Very high)	★★★★★
★★★★★	Docility (1-5 scale)	-0.03 scale	39% (Low)	★★★★★
★★★★★	Carcass weight (kg)	14.6kg	43% (Average)	★★★★★
★★★★★	Carcass conformation (1-15 scale)	0.4 scale	45% (Average)	★★★★★
EXPECTED DAUGHTER BREEDING PERFORMANCE				
	Daughter calving difficulty (% 3 & 4)	7.2%	58% (Average)	
★★★★★	Daughter milk (kg)	7.4kg	41% (Average)	★★★★★
★★★★★	Daughter calving interval (days)	-2.3d	37% (Low)	★★★★★

Genotype included in evaluation

- Twomey has developed into an outstanding example of the Angus breed.
- He is long and correct with tremendous thickness through the body.
- Easy calving, suitable for pedigree maidens.



SCAN ME FOR
LATEST INDEX

— F A R KRUGERRAND 410H

BELVIN REBEL

— BELVIN GEORGINA

— BELVIN MERCEDES 32'02

BELVIN LADY BLOSSOM 64'04

— BELVIN LADY BLOSSOM 40'01

AA6682 HW LORD HORATIO

PED

DOB:
03-Mar-2019

MYOSTATIN STATUS:
+ / + (Non-Carrier)

I.D.: AANGBRM546977402538



Jerusalem Lady Heather

Bred by: HW Angus, Scotland



Star Rating (within breed)	Economic Indexes	€uro value per progeny	Index reliability	Star Rating (across all beef breeds)
★★★☆☆	REPLACEMENT	€89	47% (Average)	★★★★★
★★★★★	TERMINAL	€87	61% (High)	★★★★★
★★★★★	DAIRY BEEF	€157	71% High	★★★★★

Calving Difficulty (births requiring considerable assistance; % 3 & 4)			
When Mated With:	%	Reliability	Calving Records
Beef Heifers	5.0%	50% (Average)	6
Beef Cows	4.1%	82% (Very high)	47

Star Rating (within breed)	Key profit traits	Index value	Trait reliability	Star Rating (across all beef breeds)
EXPECTED PROGENY PERFORMANCE				
★★★★★	Gestation Length (days)	-2.5d	99% (Very high)	★★★★★
★★★☆☆	Docility (1-5 scale)	-0.13 scale	56% (Average)	★★★☆☆
★★★★★	Carcass weight (kg)	14.7kg	62% (High)	★★★★★
★★★★★	Carcass conformation (1-15 scale)	0.9 scale	51% (Average)	★★★☆☆
EXPECTED DAUGHTER BREEDING PERFORMANCE				
	Daughter calving difficulty (% 3 & 4)	6.8%	54% (Average)	
★★★★★	Daughter milk (kg)	9.1kg	39% (Low)	★★★★★
★★★☆☆	Daughter calving interval (days)	-1.7d	35% (Low)	★★★★★



Daughter, Mogeely Flora Y858, sold for €7400 at the Mogeely reduction sale



Horatio Daughter, 1st prize winner, Cork Show 2023

Genotype included in evaluation

- The most used AA sire in Ireland in 2023.
- The ultimate Angus sire with short gestation, excellent weight for age and shape.
- Excellent for age at slaughter, on average progeny of Horatio finish 17 days earlier than their herdmates.



SCAN ME FOR LATEST INDEX

- S A V BRAVE 8320
- NETHERTON KRACKER P790
- NETHERTON KARAMA K574
- RAWBURN JULIO ERIC L249
- JERUSALEM LADY HEATHER P298
- JERSULEM LADY HEATHER F106

AA5280 COOLRAIN PATRIARCH PED
 I.D.: AANIRLM221155230581
 DOB: 20-Aug-2017 | MYOSTATIN STATUS: +/+ (Non-Carrier)



Coolrain Patriarch AA5280
 Bred by: Nigel Peavoy, Portlaois, Co. Laois

AA4087 GOULDING MAN OH MAN PED
 I.D.: AANIRLM191198950688
 DOB: 14-Mar-2015 | MYOSTATIN STATUS: NT821/+ (1 copy)



Goulding Man O Man
 Bred by: Matthew Goulding, Ballyduff, Co. Kerry

CALVING EASE AVERAGE FINISHING
 Source ICBF July 23

Star Rating (within breed)	Economic Indexes	Euro value per progeny	Index reliability	Star Rating (across all beef breeds)
★★★★★	REPLACEMENT	€121	67% (High)	★★★★★
★★★★★	TERMINAL	€75	91% (Very high)	★★★★★
★★★★★	DAIRY BEEF	€136	92% (Very high)	★★★★★
Calving Difficulty (births requiring considerable assistance; % 3 & 4)				
When Mated With:		%	Reliability	Calving Records
Beef Heifers		6.9%	82% (Very high)	72
Beef Cows		3.0%	91% (Very high)	152

Star Rating (within breed)	Key profit traits	Index value	Trait reliability	Star Rating (across all beef breeds)
EXPECTED PROGENY PERFORMANCE				
★★★★★	Gestation Length (days)	-1.9d	99% (Very high)	★★★★★
★★★★★	Docility (1-5 scale)	0.07 scale	87% (Very high)	★★★★★
★★★★★	Carcass weight (kg)	9kg	99% (Very high)	★★★★★
★★★★★	Carcass conformation (1-15 scale)	0.68 scale	99% (Very high)	★★★★★
EXPECTED DAUGHTER BREEDING PERFORMANCE				
Daughter calving difficulty (% 3 & 4)		6.0%	64% (High)	
★★★★★	Daughter milk (kg)	5.2kg	51% (Average)	★★★★★
★★★★★	Daughter calving interval (days)	-5.2d	52% (Average)	★★★★★

Genotype included in evaluation

- S A V NET WORTH 4200
- BOVA LORD BLACKWOOD H175**
- BELVIN LADY BLOSSOM64'04ET IMP
- ROSEMEAD KARONA J957
- COOLRAIN MEGAN**
- COOLRAIN FLORRIE



SCAN ME FOR LATEST INDEX

- Patriarch is a proven all-rounder.
- Progeny have good weight for age, shape and finish early.
- Excellent docility.



Coolrain Patriarch son, Nigel Peavoy

CALVING EASE AVERAGE WEANLING FINISHING
 Source ICBF July 23

Star Rating (within breed)	Economic Indexes	Euro value per progeny	Index reliability	Star Rating (across all beef breeds)
★★★★★	REPLACEMENT	€122	89% (Very high)	★★★★★
★★★★★	TERMINAL	€105	94% (Very high)	★★★★★
★★★★★	DAIRY BEEF	€118	94% (Very high)	★★★★★
Calving Difficulty (births requiring considerable assistance; % 3 & 4)				
When Mated With:		%	Reliability	Calving Records
Beef Heifers		9.4%	92% (Very high)	218
Beef Cows		4.5%	98% (Very high)	1699

Star Rating (within breed)	Key profit traits	Index value	Trait reliability	Star Rating (across all beef breeds)
EXPECTED PROGENY PERFORMANCE				
★★★★★	Gestation Length (days)	1.3d	99% (Very high)	★★★★★
★★★★★	Docility (1-5 scale)	0.09 scale	99% (Very high)	★★★★★
★★★★★	Carcass weight (kg)	25.2kg	99% (Very high)	★★★★★
★★★★★	Carcass conformation (1-15 scale)	1.12 scale	99% (Very high)	★★★★★
EXPECTED DAUGHTER BREEDING PERFORMANCE				
Daughter calving difficulty (% 3 & 4)		5.8%	85% (Very high)	
★★★★★	Daughter milk (kg)	2.4kg	91% (Very high)	★★★★★
★★★★★	Daughter calving interval (days)	-5.4d	74% (High)	★★★★★

Genotype included in evaluation

- ABBERTON DAZZLE G160
- ABBERTON EMINEM M285**
- ABBERTON ERICA H187
- GOULDING EXTRA ET
- GOULDING GRACEFUL PATRIOT ET**
- DARIMA PATRIOT Z082



SCAN ME FOR LATEST INDEX

- Man Oh Man is a proven high performance sire.
- Top 1% of the breed for carcass weight & carcass conformation.
- Excellent for age at slaughter, on average Man Oh Man progeny finish 18 days earlier than their herdmates.



Goulding Man Oh Man daughter, Champion Angus, Carrick on Shannon, Fat Stock Sale '21

AA4089 INTELAGRI MATTEO

PED

I.D.: AANIRLM201083280080

DOB: 03-Jun-2015

MYOSTATIN STATUS: +/+ (Non-Carrier)



INTELAGRI MATTEO

Bred by: -

AA7452 TE MANIA NEBO N424

PED

I.D.: AANUSAM00000VTMN424

DOB: 07-Aug-2017

MYOSTATIN STATUS: +/+ (Non-Carrier)



TE MANIA NEBO N424

Bred by: Te Mania Stud, Australia



Source ICBF July 23

Star Rating (within breed)	Economic Indexes	Euro value per progeny	Index reliability	Star Rating (across all beef breeds)
★★★★★	REPLACEMENT	€165	89% (Very high)	★★★★★
★★★★★	TERMINAL	€88	95% (Very high)	★★★★★
★★★★★	DAIRY BEEF	€172	95% (Very high)	★★★★★
Calving Difficulty (births requiring considerable assistance; % 3 & 4)				
When Mated With:		%	Reliability	Calving Records
Beef Heifers		4.0%	99% (Very high)	2442
Beef Cows		1.8%	98% (Very high)	1527

Star Rating (within breed)	Key profit traits	Index value	Trait reliability	Star Rating (across all beef breeds)
EXPECTED PROGENY PERFORMANCE				
★★★★★	Gestation Length (days)	-3.6d	99% (Very high)	★★★★★
★★★★★	Docility (1-5 scale)	0.01 scale	99% (Very high)	★★★★★
★★★★★	Carcass weight (kg)	9.5kg	99% (Very high)	★★★★★
★★★★★	Carcass conformation (1-15 scale)	0.8 scale	99% (Very high)	★★★★★
EXPECTED DAUGHTER BREEDING PERFORMANCE				
Daughter calving difficulty (% 3 & 4)		9.2%	85% (Very high)	
★★★★★	Daughter milk (kg)	6.3kg	90% (Very high)	★★★★★
★★★★★	Daughter calving interval (days)	-9.2d	71% (High)	★★★★★

Genotype included in evaluation

- └ TE MANIA YORKSHIRE Y437
- TE MANIA BERKLEY B1**
- └ TE MANIA LOWAN Z53 ET
- └ NIGHTINGALE PROUD JAKE G405
- GOULDING K MISSIE 261 ET**
- └ GOULDING MISSIE K 415



SCAN ME FOR LATEST INDEX

- A proven superstar for both maternal and terminal traits.
- Matteo is the perfect choice for pedigree breeders to breed bulls for the dairy market. Top 1% of the breed on DBI.
- Excellent carcass traits, weight, conformation & age at slaughter, on average Matteo progeny finish 19 days ahead of their herdmates.



Daughter, Bellingham V Trish 3, Irish Aberdeen Angus All Ireland Champion 2023

PRE-ORDER



Source ICBF July 23

Star Rating (within breed)	Economic Indexes	Euro value per progeny	Index reliability	Star Rating (across all beef breeds)
★★★★★	REPLACEMENT	€117	34% (Low)	★★★★★
★★★★★	TERMINAL	€78	36% (Low)	★★★★★
★★★★★	DAIRY BEEF	€149	41% (Average)	★★★★★
Calving Difficulty (births requiring considerable assistance; % 3 & 4)				
When Mated With:		%	Reliability	Calving Records
Beef Heifers		3.0%	38% (Low)	0
Beef Cows		1.3%	62% (High)	1

Star Rating (within breed)	Key profit traits	Index value	Trait reliability	Star Rating (across all beef breeds)
EXPECTED PROGENY PERFORMANCE				
★★★★★	Gestation Length (days)	-3d	49% (Average)	★★★★★
★★★★★	Docility (1-5 scale)	0.06 scale	30% (Low)	★★★★★
★★★★★	Carcass weight (kg)	6.7kg	30% (Low)	★★★★★
★★★★★	Carcass conformation (1-15 scale)	0.63 scale	31% (Low)	★★★★★
EXPECTED DAUGHTER BREEDING PERFORMANCE				
Daughter calving difficulty (% 3 & 4)		7.5%	52% (Average)	
★★★★★	Daughter milk (kg)	7.8kg	30% (Low)	★★★★★
★★★★★	Daughter calving interval (days)	-3.7d	31% (Low)	★★★★★

Genotype included in evaluation

- └ G A R TWINHEARTS 8418
- TE MANIA JENKINS J89**
- └ TE MANIA JAPARA G115
- └ VERMONT DRAMBUIE D057
- TE MANIA WARGOONA J214**
- └ TE MANIA WARGOONA G455



SCAN ME FOR LATEST INDEX

- Nebo comes from the same breeding programme as Te Mania Berkley.
- He has many of the traits that made Berkley famous; calving ease, short gestation, good performance.
- His dam is an outstanding Te Mania Emperor daughter.



Te Mania Jenkins, J89, Sire

HE9382 GOULDINGPOLL 1 NIJINSKY PP

PED

DOB:
18-Dec-2021

MYOSTATIN STATUS:
+ / + (Non-Carrier)

I.D.: HERIRLM214806891263



GOULDINGPOLL 1 NIJINSKY PP

Bred by: Matthew Goulding, Ballyduff, Co. Kerry



Star Rating (within breed)	Economic Indexes	Euro value per progeny	Index reliability	Star Rating (across all beef breeds)
★★★★★	REPLACEMENT	€117	45% (Average)	★★★★★
★★★★★	TERMINAL	€89	47% (Average)	★★★★★
★★★★★	DAIRY BEEF	€135	50% Average	★★★★★

Source (CFB) July 23



Gouldingpoll 1 Ravette 1262, Full sister to Gouldingpoll 1 Nijinsky

Calving Difficulty (births requiring considerable assistance; % 3 & 4)			
When Mated With:	%	Reliability	Calving Records
Beef Heifers	6.8%	46% (Average)	0
Beef Cows	2.5%	69% (High)	0

Star Rating (within breed)	Key profit traits	Index value	Trait reliability	Star Rating (across all beef breeds)
EXPECTED PROGENY PERFORMANCE				
★★★★★	Gestation Length (days)	-1.3d	46% (Average)	★★★★★
★★★★★	Docility (1-5 scale)	0.2 scale	44% (Average)	★★★★★
★★★★★	Carcass weight (kg)	12.9kg	45% (Average)	★★★★★
★★★★★	Carcass conformation (1-15 scale)	0.78 scale	45% (Average)	★★★★★
EXPECTED DAUGHTER BREEDING PERFORMANCE				
	Daughter calving difficulty (% 3 & 4)	4.9%	59% (Average)	
★★★★★	Daughter milk (kg)	5.9kg	45% (Average)	★★★★★
★★★★★	Daughter calving interval (days)	-4.5d	37% (Low)	★★★★★



Panmure 1 Henry, Sire

Genotype included in evaluation

- Nijinsky has it all, perfect structure, excellent muscle development, style & colour.
- Impeccably bred, his pedigree is a who's who of great sires and females.
- Nijinsky is full brother to the Irish record-priced female who sold at the 2022 Genetic Gems sale.



SCAN ME FOR LATEST INDEX

- └ ROMANY 1 DISTILLER A84 D53
- └ **PANMURE 1 HENRY {HYF}**
- └ PANMURE 1 PLUM E2
- └ DOREPOLL 1 13P PATRIOT
- └ **GOULDINGPOLL 1 RAVETTE**
- └ DOREPOLL 1 499 MISS RAVE

HE5346 FISHER 1 PROFILE PP

PED

I.D.: HERGBRM263027500456

DOB: 02-Mar-2017

MYOSTATIN STATUS: +/- (Non-Carrier)



FISHER 1 PROFILE P456



Bred by: Wj Hutchings+ Sons, UK

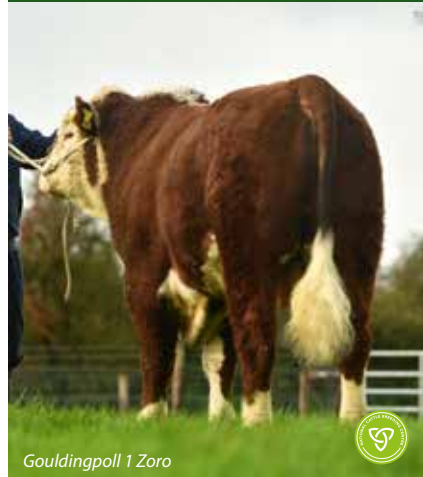
HE6841 GOULDINGPOLL 1 ZORO PP

PED

I.D.: HERIRLM214806811009

DOB: 06-Mar-2019

MYOSTATIN STATUS: +/- (Non-Carrier)



Gouldingpoll 1 Zoro



Bred by: Matthew Goulding, Ballyduff, Co. Kerry



Source ICBF July 23

Star Rating (within breed)	Economic Indexes	Euro value per progeny	Index reliability	Star Rating (across all beef breeds)
★★★★★	REPLACEMENT	€105	64% (High)	★★★★★
★★★★★	TERMINAL	€92	91% (Very high)	★★★★★
★★★★★	DAIRY BEEF	€147	91% (Very high)	★★★★★
Calving Difficulty (births requiring considerable assistance; % 3 & 4)				
When Mated With:	%	Reliability	Calving Records	
Beef Heifers	6.3%	83% (Very high)	88	
Beef Cows	3.2%	94% (Very high)	327	

Star Rating (within breed)	Key profit traits	Index value	Trait reliability	Star Rating (across all beef breeds)
EXPECTED PROGENY PERFORMANCE				
★★★★★	Gestation Length (days)	-2.2d	99% (Very high)	★★★★★
★★★★★	Docility (1-5 scale)	0.22 scale	89% (Very high)	★★★★★
★★★★★	Carcass weight (kg)	4.7kg	99% (Very high)	★★★★★
★★★★★	Carcass conformation (1-15 scale)	0.74 scale	98% (Very high)	★★★★★
EXPECTED DAUGHTER BREEDING PERFORMANCE				
	Daughter calving difficulty (% 3 & 4)	4.7%	59% (Average)	
★★★★★	Daughter milk (kg)	-1.2kg	46% (Average)	★★★★★
★★★★★	Daughter calving interval (days)	-4.6d	44% (Average)	★★★★★

Genotype included in evaluation

- └ FISHER 1 CRACKER
- FISHER 1 JAGUAR J347**
- └ FISHER 1 EVA C190
- └ YALGOO BOULDER Z250
- FISHER 1 SUSAN H338**
- └ FISHER 1 SUSAN P7



SCAN ME FOR LATEST INDEX

- No. 1 HE available on DBI.
- Profile is the ultimate HE sire; calving easy, short gestation, super quality, colour & homo-pollled.
- He ranks in the top 1% of the breed for Terminal Index and DBI.



Fisher 1 Prospect, ¾ Brother



Source ICBF July 23

Star Rating (within breed)	Economic Indexes	Euro value per progeny	Index reliability	Star Rating (across all beef breeds)
★★★★★	REPLACEMENT	€111	51% (Average)	★★★★★
★★★★★	TERMINAL	€72	60% (High)	★★★★★
★★★★★	DAIRY BEEF	€121	71% (High)	★★★★★
Calving Difficulty (births requiring considerable assistance; % 3 & 4)				
When Mated With:	%	Reliability	Calving Records	
Beef Heifers	6.5%	50% (Average)	5	
Beef Cows	2.4%	80% (Very high)	29	

Star Rating (within breed)	Key profit traits	Index value	Trait reliability	Star Rating (across all beef breeds)
EXPECTED PROGENY PERFORMANCE				
★★★★★	Gestation Length (days)	0.4d	99% (Very high)	★★★★★
★★★★★	Docility (1-5 scale)	0.09 scale	50% (Average)	★★★★★
★★★★★	Carcass weight (kg)	8.6kg	60% (High)	★★★★★
★★★★★	Carcass conformation (1-15 scale)	0.79 scale	50% (Average)	★★★★★
EXPECTED DAUGHTER BREEDING PERFORMANCE				
	Daughter calving difficulty (% 3 & 4)	5.0%	58% (Average)	
★★★★★	Daughter milk (kg)	6.5kg	46% (Average)	★★★★★
★★★★★	Daughter calving interval (days)	-6.3d	39% (Low)	★★★★★

Genotype included in evaluation

- └ ROMANY 1 DISTILLER A84 D53
- PANMURE 1 HENRY {HYF}**
- └ PANMURE 1 PLUM E2
- └ MOESKAER KENO 1222
- MOESKAER PEBBLES 1344**
- └ MOESKAER PEBBLES 1138 ET



SCAN ME FOR LATEST INDEX

- Zoro has that dream combination of calving ease and high performance.
- He was one of the highest performers at the ABP demonstration farm in 2023.
- Suitable for pedigree maidens.



Panmure 1 Henry, Sire

HE4344 ALLOWDALE RAMBO 475

PED

DOB:
27-Jun-2014

MYOSTATIN STATUS:
+ / + (Non-Carrier)

I.D.: HERIRLM151225390475



HE2027, Allowdale Rambo ET

Bred by: Anne Pounds & Liam Philpott, Kanturk, Co. Cork

HEREFORD



Star Rating (within breed)	Economic Indexes	Euro value per progeny	Index reliability	Star Rating (across all beef breeds)
★★★★★	REPLACEMENT	€141	80% (Very high)	★★★★★
★★★★★	TERMINAL	€57	91% (Very high)	★★★★★
★★★★★	DAIRY BEEF	€76	91% Very high	★★★★★

Source ICFB July '23



HE4344 Son, Cavehill Max, Top Price bull at the IHCS Premier Sale Spring 2022

Calving Difficulty (births requiring considerable assistance; % 3 & 4)			
When Mated With:	%	Reliability	Calving Records
Beef Heifers	11.7%	78% (High)	37
Beef Cows	4.4%	95% (Very high)	317

Star Rating (within breed)	Key profit traits	Index value	Trait reliability	Star Rating (across all beef breeds)
EXPECTED PROGENY PERFORMANCE				
★★★★★	Gestation Length (days)	-1.9d	99% (Very high)	★★★★★
★★★★★	Docility (1-5 scale)	0.19 scale	92% (Very high)	★★★★★
★★★★★	Carcass weight (kg)	13.2kg	98% (Very high)	★★★★★
★★★★★	Carcass conformation (1-15 scale)	0.69 scale	97% (Very high)	★★★★★
EXPECTED DAUGHTER BREEDING PERFORMANCE				
	Daughter calving difficulty (% 3 & 4)	6.8%	77% (High)	
★★★★★	Daughter milk (kg)	10.1kg	79% (High)	★★★★★
★★★★★	Daughter calving interval (days)	-6d	58% (Average)	★★★★★



Son, Tramona Oscar sold for €5100 at the IHCS Sale in Nenagh, May '23.

Genotype included in evaluation

- Rambo 475 is a proven superior sire for both Maternal and Terminal traits.
- The perfect bull to improve carcass weight, shape and milk.
- No. 1 HE sire available for milk.
- A truly exceptional all-round bull.



SCAN ME FOR LATEST INDEX

- └ GH RAMBO 279R
- └ ALLOWDALE RAMBO ET {HYF}
- └ GH PERFORMANCE PASSION 126S
- └ BOWMONT STORM A584
- └ ALLOWDALE PRETTYMAID 27S
- └ BALLEEN PRETTYMAID 16TH

HE8511 INTELAGRI 1 GOLD RUSH Pp

PED

DOB: 20-May-2020

MYOSTATIN STATUS: +/- (Non-Carrier)

I.D.: HERIRLM223042420263



INTELAGRI 1 GOLD RUSH ET



Bred by: Robert Beattie, Manor Kilbride, Co. Wicklow



Star Rating (within breed)	Economic Indexes	Euro value per progeny	Index reliability	Star Rating (across all beef breeds)
★★★★★	REPLACEMENT	€113	46% (Average)	★★★★★
★★★★★	TERMINAL	€85	49% (Average)	★★★★★
★★★★★	DAIRY BEEF	€134	52% Average	★★★★★

Source ICBF July 23



Full Brother, Goldspice

Calving Difficulty (births requiring considerable assistance; % 3 & 4)			
When Mated With:	%	Reliability	Calving Records
Beef Heifers	5.5%	47% (Average)	0
Beef Cows	2.9%	69% (High)	0



Barwise Rambling Rosie, Dam

Star Rating (within breed)	Key profit traits	Index value	Trait reliability	Star Rating (across all beef breeds)
EXPECTED PROGENY PERFORMANCE				
★★★★★	Gestation Length (days)	-1.5d	47% (Average)	★★★★★
★★★★★	Docility (1-5 scale)	0.15 scale	44% (Average)	★★★★★
★★★★★	Carcass weight (kg)	12.3kg	47% (Average)	★★★★★
★★★★★	Carcass conformation (1-15 scale)	0.75 scale	46% (Average)	★★★★★
EXPECTED DAUGHTER BREEDING PERFORMANCE				
	Daughter calving difficulty (% 3 & 4)	5.5%	59% (Average)	
★★★★★	Daughter milk (kg)	6kg	44% (Average)	★★★★★
★★★★★	Daughter calving interval (days)	-5.2d	38% (Low)	★★★★★

Genotype included in evaluation

- Gold Rush is bred for high carcass weight & conformation.
- He is a full brother to Goldspice who is a proven high performance sire.
- The first calves look very promising with excellent shape.




SCAN ME FOR LATEST INDEX

- └ ROMANY 1 DISTILLER A84 D53
- └ PANMURE 1 HENRY {HYF}
- └ PANMURE 1 PLUM E2
- └ BARWISE 1 WELLINGTON ET (ARG)
- └ BARWISE 1 RAMBLING ROSIE 2267
- └ BARWISE 1 ROSIE ET (IMP ARG)

SH2181 COOLVIN DOMINATOR (R) PED
 I.D.: MSHIRLM361102810329
 DOB: 09-Feb-2014 | MYOSTATIN STATUS: +/+ (Non-Carrier)



COOLVIN DOMINATOR (R) 
 Bred by: Padraig Coughlan, Ballymahon, Co. Westmeath

SH8532 RYLO DUNCAN (RW)(H) PED
 I.D.: MSHIRLM213379750062
 DOB: 20-Apr-2020 | MYOSTATIN STATUS: E226X/+ (1 Copy)



RYLO DUNCAN (RW)(H) 
 Bred by: Vivienne Ryan, Enfield, Co. Meath



Source ICBF July 23

Star Rating (within breed)	Economic Indexes	Euro value per progeny	Index reliability	Star Rating (across all beef breeds)
★★★★★	REPLACEMENT	€106	88% (Very high)	★★★★★
★★★★★	TERMINAL	€32	92% (Very high)	★★★★★
★★★★★	DAIRY BEEF	€37	87% (Very high)	★★★★★
Calving Difficulty (births requiring considerable assistance; % 3 & 4)				
When Mated With:		%	Reliability	Calving Records
Beef Heifers		10.7%	89% (Very high)	139
Beef Cows		5.1%	95% (Very high)	378

Star Rating (within breed)	Key profit traits	Index value	Trait reliability	Star Rating (across all beef breeds)
EXPECTED PROGENY PERFORMANCE				
★★★★★	Gestation Length (days)	2.9d	98% (Very high)	★★★★★
★★★★★	Docility (1-5 scale)	0.08 scale	95% (Very high)	★★★★★
★★★★★	Carcass weight (kg)	11.7kg	98% (Very high)	★★★★★
★★★★★	Carcass conformation (1-15 scale)	0.86 scale	97% (Very high)	★★★★★
EXPECTED DAUGHTER BREEDING PERFORMANCE				
Daughter calving difficulty (% 3 & 4)		8.2%	86% (Very high)	
★★★★★	Daughter milk (kg)	9.3kg	92% (Very high)	★★★★★
★★★★★	Daughter calving interval (days)	-0.8d	77% (High)	★★★★★

Genotype included in evaluation

- └ EIONMOR MR GUS 80C BEEF
- SLIABHBHUI PRINCE 2ND
- └ NOHOVAL ENDA BETTY
- └ KILFRUSH VANTAGE 7TH
- COOLVIN BELLE 1ST (DRO)
- └ MOYGARA BUTTERCUP (DRO)



SCAN ME FOR LATEST INDEX

- Dominator is the perfect bull to breed replacements without compromising on terminal traits.
- A big milk improver - +9 kgs @ 92% reliability.
- 5 star Shorthorn for carcass weight & conformation.



Coolvin Dominator daughter Glann Little Miss Fab



Source ICBF July 23

Star Rating (within breed)	Economic Indexes	Euro value per progeny	Index reliability	Star Rating (across all beef breeds)
★★★★★	REPLACEMENT	€110	48% (Average)	★★★★★
★★★★★	TERMINAL	€38	49% (Average)	★★★★★
★★★★★	DAIRY BEEF	€50	51% (Average)	★★★★★
Calving Difficulty (births requiring considerable assistance; % 3 & 4)				
When Mated With:		%	Reliability	Calving Records
Beef Heifers		5.7%	53% (Average)	0
Beef Cows		3.0%	73% (High)	2

Star Rating (within breed)	Key profit traits	Index value	Trait reliability	Star Rating (across all beef breeds)
EXPECTED PROGENY PERFORMANCE				
★★★★★	Gestation Length (days)	2d	58% (Average)	★★★★★
★★★★★	Docility (1-5 scale)	0.08 scale	45% (Average)	★★★★★
★★★★★	Carcass weight (kg)	9.3kg	46% (Average)	★★★★★
★★★★★	Carcass conformation (1-15 scale)	0.71 scale	46% (Average)	★★★★★
EXPECTED DAUGHTER BREEDING PERFORMANCE				
Daughter calving difficulty (% 3 & 4)		8.6%	65% (High)	
★★★★★	Daughter milk (kg)	9.2kg	46% (Average)	★★★★★
★★★★★	Daughter calving interval (days)	-0.7d	44% (Average)	★★★★★

Genotype included in evaluation

- └ EIONMOR MR GUS 80C BEEF
- SLIABHBHUI PRINCE 2ND
- └ NOHOVAL ENDA BETTY
- └ DOON HEATHCLIFF (DRO)
- BALLYLAFFIN MADONNA (RO)
- └ BALLYLAFFIN JEMIMA GRD B (W)



SCAN ME FOR LATEST INDEX

- Duncan's first calves were easily born and developed quickly.
- A son of the renowned Sliabhbhui Prince from a super cow family.
- Duncan is a long, powerful bull with super length and an excellent pelvis.



Calf

MAXIMISE SUCCESS OF AI IN SUCKLER COWS

1. The cow must have an easy calving.

Match your cows to sires that they are capable of calving easily. Difficult calving is one of the biggest causes of cows being slow to return to service. Heifers that are calving at 2 years of age need an exceptionally easy calving sire.

2. Break the strong maternal- offspring bond

Cows must cycle within 55 days of calving to achieve one calf per cow per year. Breaking the maternal bond will reduce the time to first heat by 4 weeks. 80% of cows will exhibit a fertile heat by day 45, however, about 10% will not respond. These are often the cows in poor Body Condition Score (BCS). The easiest way to break the bond is to separate the calves from the cows from day 30, only allowing access for twice daily suckling. This is a superb way of getting Autumn calvers and 1st calvers cycling. For the autumn calving cows indoors, a door in the creep area to an outside paddock can be opened to allow the calves out to grass.

In addition to the cows cycling sooner, the calves are out most of the time resulting in reduced disease issues, less bedding used and heavier calves at weaning. A winner all around.

3. Nutrition and BCS at calving

The higher the BCS at calving the quicker the cow will resume cycling post - calving. A BCS of 2.5+ is ideal.

Extra feeding after calving will not compensate for poor BCS at calving; good nutrition is necessary pre and post calving. Cows on poor BCS e.g. 1.75 will not cycle until 71+ days after calving while cows in good BCS 3.0+ will be cycling by day 55.

Avoid fluctuations in feed supply around breeding. Keep cows on a rising plane of nutrition.

Mineral supplementation is necessary to supplement the silage ingested

4. Health

Discuss a herd health strategy with your Vet pre-breeding.

Ensure cows receive all vaccinations 3 weeks prior to breeding. Ensure cows are dosed for parasites if nessesary - Fluke & Worms prior to breeding.

5. Avoid stress around the time of breeding

Ensure cows are in a socially stable group. Avoid mixing cows from different groups during the breeding season especially 1st calved heifers.

6. Requirements for cows to express normal heat activity

Adequate space is necessary to allow mounting for heat detection. Increased stocking density indoors reduces heat expression and more false heats will occur.

Mounting activity and duration of mounting is reduced where under foot conditions are slippery and when cattle are on concrete.

7. Timing of insemination to maximise conception rates

The best time to inseminate is when animals are in standing heat and up to 12 hours after the end of standing heat.

Avoid inseminating cows that are more than 12 hours after the end of standing heat.

Heat detection aids are crucial for accurate and efficient heat detection.

Once a day insemination works well. For example, if the technician is coming into your yard each day at 12 noon, inseminate all the cows you have seen up to 12 noon that day.

Speak to your technician and discuss your routine.

When synchronising cows and heifers, plan the time of insemination in advance with your technician and strictly adhere to the programme.

Insemination is a job requiring precision to maximise conception rate.

Ensure adequate facilities are available and help the technician especially where more than one animal is to be inseminated.

8. Biosecurity - it's everybody's responsibility!

MAXIMISE SUCCESS OF AI IN MAIDEN HEIFERS

1. Ensure that heifers meet the recommended target weights at breeding.

- This ensures that the majority of heifers are cycling
- This ensures that heifers are well developed at calving and will calve easily.
- This ensures that heifers are more likely to go in-calf within 60-80 days after their 1st calving.

2. Ensure that heifers are on a rising plane of nutrition (gaining weight) 3 weeks before and during the breeding season.

3. Ensure that heifers have received all of their vaccines 3 weeks prior to breeding.

4. Ensure that heifers have been dosed for parasites- Fluke & Worms prior to breeding.

5. Ensure that heifers are in a socially stable group; avoid mixing heifers from different groups during the breeding season.

6. Ensure that heifers have adequate space to allow mounting for heat detection. Increased stocking density indoors reduces heat expression and more false heats will occur.

7. Ensure that heifers have suitable under-foot conditions; mounting activity and duration of mounting is reduced when under- foot conditions are slippery and when cattle are on concrete.



Recommended target weight at 14 months of age		
Breed Target	Target (KG)	ADG birth to 14 months (Kg/day)
Angus X	370	0.77
Hereford X	370	0.77
Simmental X	400	0.85
Limousin X	420	0.88
Charolais X	430	0.9

HEAT DETECTION AIDS

PAINT STICKS/ CRAYONS

Paint sticks or crayons are very easy and convenient to use. They rub off easily after mounting and they work well with cattle indoors and outdoors.



SCRATCH CARDS

Scratch cards are an excellent method of heat detection in both cows and heifers when cattle are outdoors and rumps are clean. The scratch cards shown here in the picture are excellent; they stay on the females are not very easily scratched off making it easier to identify the animal on heat.



VASECTOMISED BULL

Vasectomised bulls fitted with chin balls are an excellent method of heat detection for both heifers and cows. The chin ball is as important as the bull as heats will be missed due to the bull mating the cow and not remaining with her. This happens especially in mature bulls as they mate and walk away. They do less courting than young bulls. Ensure the bull is vasectomised. Your Vet can check the ejaculate to ensure it is free of semen



Before



After animal has shown signs of standing heat



Top Tips

1. Watch the forecast for a perfectly dry day to apply the cards.
2. Patience- Wait till the 1st card is tacky before application. It will stick to your glove when tacky.
3. Reapply the cards the day after being inseminated.

HEALTH & SAFETY

Exercise caution when dealing with all bulls including those that are vasectomised.



BENEFITS OF SYNCHRONISATION

1. All animal inseminated on the one day without any heat detection.
2. Repeats will occur over a 2-4 day period, making heat detection much easier as more animals are on heat at the one time. You will know the expected days of heats in advance.
3. Cows calved 35 days and not cycling when synchronised will resume cyclicity, provided nutrition and management is good. This will increase the 3 and 6 week calving rate.
4. A compact group of cows/heifers can be presented for scanning and the empty cows/heifers can be synchronised again or marked for heat detection.
5. A compact calf crop makes management from calving to weaning easier and facilitates sale.
6. Compacting calving allows animals to be grouped together e.g. all 1st calvers can be grouped together for extra feeding.
7. Even though you will inseminate animals in one day, they will calve over a two-week period.

Note: When heats are due in a group of cows indoors, it is best to lock the calves away from the cows in the creep area to avoid them getting injured. It is also prudent to take away the vasectomised bull at this time of maximum activity to avoid him getting injured.



DIY TRAINING COURSE

Would you like to AI your own cows?

We offer Ireland's most comprehensive DIY AI course with unrivalled theory and practical training.

**DAFM APPROVED
5 DAY COARSE.**



Contact us for more information and details of special offers on

022 43228

SYNCHRONISATION PROGRAMMES FOR BEEF COWS AND HEIFERS

Fixed Time AI protocol for Beef cows – No heat detection. 3 Handlings in the crush

Example Day	Example Time	Day	Action
Mon 3rd April	Anytime	Day 0	Insert P4 device + Inject GnRH
Mon 10th April	3pm	Day 7	Remove P4 device + Inject PG + Inject 200 iu eCG
Thurs 13th April	2pm - 4pm	Day 10	FTAI + Inject GnRH

- This is a superb programme for herds that wish to tighten and advance the mean calving date & maximises pregnancy rates as 100% submission is achieved.
- Superb to bring forward late calvers, however ensure cows are calved 35 days, have a BCS of 2.75+ and Intakes are maximised.

Fixed Time AI protocol for Beef Heifers

Example Day	Example Time	Day	Action
Mon 3rd April	Anytime	Day 0	Insert P4 device + Inject GnRH
Sat 8th April	3pm	Day 5	Inject PG
Sun 9th April	3pm	Day 6	Remove P4 device + Inject PG
Tue 11rd April	2 - 4pm	Day 8	FTAI conventional semen + Inject GnRH

- This regime allows you to inseminate all heifers with 4 handlings and all are AI'ed at a fixed time - No heat detection until the repeats.
- AI'ing the repeats ensures that the bulls are not overworked, avoids bulls getting injured and ensures we will have them when we need them

PG Injection on Day 7 – Heat Detect

Example Days	Day	Action
Mon 3rd to Mon 10 th of April	Day 0 – Day 7	AI on observed heat - should have 1/3 detected at end of week
Mon 10th April	Day 7	PG to heifers not detected in heat. Only inject if 1/3 bred already - otherwise investigate. Continue to heat detect
Wed 12 th /Thur 13 th April	Day 9 – Day 10	AI on detected heat. Majority on 48-72 hours post PG injection

- If 1/3 are not bred in the 1st week avoid injecting with PG as the heifers are not cycling- due to their weight, plane of nutrition, pregnancy or heat detection.
- For those that are not observed - reinject PG 11 days after the 1st injection.
- If releasing a bull after AI, watch carefully for the repeats to ensure he is not overworked in those 2-4 days - prudent to use AI for those 2-4 days.

Table of Hormones required, route of application and example products:

Code	Hormone	Route	Example
P4 Device	Progesterone releasing device	Intra uterine	PRID, CIDR
GnRH	Gonadotrophin releasing hormone	Intramuscular	Receptal, Overelin, Acegon, Busol
PG	Prostaglandin	Intramuscular	Estrumate, Lutalyse, Enzaprost
eCG	Equine chorionic Gonadotrophin	Intramuscular	Folligon, Synchrostim.

Products containing the above hormones are prescription only medicines and must be prescribed by your veterinary surgeon

- The P4 Device needs to be inserted hygienically. Failure to do this will lead to excessive vaginal discharge and reduced conception rates.
- It is advisable to shorten the strings of the PRID/ CIDR particularly in heifers, as a rogue heifer may pull out several devices.
- Always contact your technician/breeding advisor prior to starting any programme to ensure availability of technician(s) on the day for fixed time AI.
- Inadvertent administration of prostaglandin to a cow/ heifer during the first 3-4 months of pregnancy will cause abortion.

ABERDEEN ANGUS SIRES AVAILABLE RANKED ON REPLACEMENT INDEX

Bull Details		Dairy Beef Index		Replacement Index		Terminal Index		Beef Heifer Calv Diff		Beef Cow Calv Diff		Dairy Cow Calv Diff		Gestation PTA (Days)		Carcass Weight Stars Within Brd	Carcass Conformation Stars Within Brd	Age at Slaughter Stars Within Brd	DBI In Spec Overall Stars Within Brd
Code	Name	DBI Index	DBI Rel	Index	Rel	Index	Rel	Index	Rel	PTA	Rel	PTA	Rel	PTA	Rel				
Pre-order	S1206 TE MANIA BERKLEY B1	€199	89%	€190	85%	€106	89%	5	3.24%	86%	1.18%	94%	2.30%	91%	-4.86	4	3	5	2
Pre-order	AA7095 WARRAWEE PATROL P29	€197	59%	€178	40%	€100	46%	5	2.99%	43%	1.29%	63%	2.29%	80%	-5.05	5	2	5	2
Available in the tank	AA4089 INTELAGRI MATTEO E.T(ET)	€172	95%	€165	89%	€88	95%	5	3.97%	99%	1.81%	98%	2.48%	99%	-3.63	4	4	5	3
Available in the tank	AA8472 TUBRIDMORE TWOMEY ET	€162	61%	€97	44%	€86	49%	5	3.73%	49%	1.23%	71%	2.11%	87%	-3.16	5	1	3	1
Available in the tank	AA6682 HW LORD HORATIO V538	€157	71%	€89	47%	€87	61%	5	5.02%	50%	4.08%	82%	3.15%	98%	-2.46	5	5	4	5

HEREFORD SIRES AVAILABLE RANKED ON DBI

Bull Details		Dairy Beef Index		Replacement Index		Terminal Index		Beef Heifer Calv Diff		Beef Cow Calv Diff		Dairy Cow Calv Diff		Gestation PTA (Days)		Carcass Weight Stars Within Brd	Carcass Conformation Stars Within Brd	Age at Slaughter Stars Within Brd	DBI In Spec Overall Stars Within Brd
Code	Name	DBI Index	DBI Rel	Index	Rel	Index	Rel	Index	Rel	PTA	Rel	PTA	Rel	PTA	Rel				
Available in the tank	HE9382 GOULDINGPOLL 1 NIJINSKY PP	€135	50%	€117	45%	€89	47%	5	6.76%	46%	2.47%	69%	4.02%	57%	-1.27	5	5	3	5
Available in the tank	HE8511 INTELAGRI 1 GOLD RUSH ET Pp	€134	52%	€113	46%	€85	49%	5	5.49%	47%	2.91%	69%	3.64%	64%	-1.5	5	5	4	5
Available in the tank	HE6841 GOULDINGPOLL 1 ZORO PP	€121	71%	€111	51%	€72	60%	5	6.49%	50%	2.41%	80%	3.01%	99%	0.42	4	5	2	5
Available in the tank	HE4645 BARWISE 1 NOMAD Pp	€95	90%	€112	62%	€66	86%	5	6.45%	48%	1.58%	75%	4.56%	96%	0.33	4	3	5	3
Available in the tank	HE4344 ALLOWDALE RAMBO 475	€76	91%	€141	80%	€57	91%	4	11.65%	78%	4.43%	95%	6.20%	95%	-1.92	5	5	3	5
Available in the tank	KKO DENDOR 1 KOHINOOR PP	€69	90%	€89	94%	€52	90%	3	7.85%	91%	2.86%	98%	5.46%	99%	-0.12	2	5	3	1

CHAROLAIS SIRES AVAILABLE RANKED ON TERMINAL INDEX

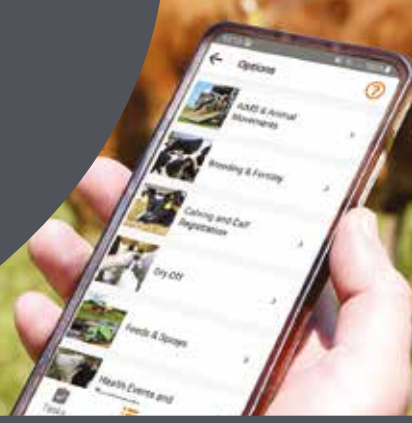
	Bull Details		Terminal Index				Replacement Index		Beef Heifer Calv Diff		Beef Cow Calv Diff		Gestation Stars Within Brd	Docility Stars Within Brd	Carcass Weight Stars Within Brd	Carcass Conformation Stars Within Brd	Daughter Milk Stars Within Brd	Calving Interval Stars Within Brd
	Code	Name	Myostatin Status	Progressive Ataxia	Index	Rel	Stars Within Brd	Index	Rel	Stars Within Brd	PTA	Rel						
Pre-order	CH6298	HAMEL	Q204x/+	Non-Carrier	€194	67%	5	€138	55%	5	9.7%	46%	3.7%	93%	5	4	5	4
Pre-order	CH8112	MESSMER	+/+	Non-Carrier	€174	65%	5	€180	52%	5	4.4%	47%	2.5%	89%	5	4	5	3
Pre-order	CH6121	MERLIN P	Q204x/+	Non-Carrier	€172	57%	5	€137	44%	5	12.1%	31%	7.8%	82%	2	4	5	4
Pre-order	CH2216	FIRST	Q204x/+	Non-Carrier	€163	87%	5	€106	79%	5	8.9%	77%	3.4%	97%	5	5	4	1
Available in the tank	CH4321	LAPON	+/+	Carrier	€161	94%	5	€91	79%	4	8.1%	95%	5.0%	99%	4	4	5	3
Pre-order	CH6115	MELOMAN	+/+	Non-Carrier	€155	59%	5	€130	47%	5	10.8%	37%	4.8%	82%	5	2	5	4
Available in the tank	CH4082	FIRODA JASON	+/(1F94L)	Non-Carrier	€146	94%	4	€80	89%	3	17.3%	76%	10.0%	99%	1	5	5	1
Available in the tank	CH6490	ORBI	Q204x/+	Non-Carrier	€145	73%	4	€92	53%	4	6.9%	54%	4.3%	98%	4	4	3	5
Available in the tank	CH6175	NERON P	Q204x/+	Carrier	€144	76%	4	€93	53%	4	10.4%	34%	4.5%	91%	3	1	5	2
Pre-order	VMO	VOIMO	+/+	Non-Carrier	€138	89%	4	€145	86%	5	9.7%	86%	3.4%	98%	5	4	2	3
Available in the tank	CH8334	CORBAUN RORY	Q204x/+	Non-Carrier	€138	54%	4	€90	51%	4	15.2%	50%	10.0%	88%	5	5	4	5
Available in the tank	CH8571	RECIF	Q204x/+	Non-Carrier	€137	41%	4	€98	38%	4	7.0%	35%	4.5%	67%	5	4	4	1
Available in the tank	CH4251	GOLDSTAR LUDWIG	+/+	Non-Carrier	€132	93%	3	€101	87%	4	12.8%	85%	7.3%	99%	4	3	5	2
Available in the tank	CH7503	CLOONRADOON RICKY	Q204x/+	Non-Carrier	€128	62%	3	€67	55%	3	16.3%	56%	9.2%	98%	3	2	4	5
Available in the tank	CH6493	OMEGA	Q204x/+	Carrier	€128	66%	3	€113	50%	5	13.3%	43%	7.6%	95%	3	1	3	5
Available in the tank	CH8577	SULTAN	+/+	Non-Carrier	€125	42%	2	€96	38%	4	9.6%	34%	3.7%	68%	5	5	3	1
Available in the tank	CH8262	GRANGWOOD ROYAL OAK ET	Q204x/+	Non-Carrier	€114	59%	1	-€23	53%	1	20.9%	50%	13.8%	91%	1	5	5	1
Available in the tank	CH8580	ROMARIN	+/+	Non-Carrier	€109	37%	1	€91	35%	4	13.1%	31%	5.3%	62%	3	4	1	5
Pre-order	CH6118	GIONO	+/(1F94L)	Non-Carrier	€102	63%	1	€117	50%	5	13.0%	33%	4.9%	91%	3	5	2	1
Available in the tank	CH8568	RAMEAU	2F94L	Non-Carrier	€101	41%	1	€90	37%	4	7.3%	30%	4.1%	68%	4	5	1	1

BELGIAN BLUE SIRES AVAILABLE RANKED ON TERMINAL INDEX

Bull Details		Terminal Index			Replacement Index			Beef Heifer Calv Diff		Beef Cow Calv Diff		Gestation Stars Within Brd	Dockity Stars Within Brd	Carcass Weight Stars Within Brd	Carcass Conformation Stars Within Brd	Daughter Milk Stars Within Brd	Calving Interval Stars Within Brd		
Code	Name	Myostatin Status	Index	Rel	Stars Within Brd	Index	Rel	Stars Within Brd	PTA	Rel	PTA	Rel	PTA	Rel	PTA	Rel	PTA		
Pre-Order - Female Sexed	BB7332	AMOUREUX HOF TER GOEDTMOED	nt821/mt821	€162	49%	4	€11	41%	1	26.1%	41%	85%	11.19%	5	1	4	5	2	1
Available in the tank	BB7638	NEW RED	nt821/mt821	€157	73%	4	€147	50%	5	17.2%	48%	97%	8.20%	2	5	3	4	5	5
Available in the tank	BB8941	NOVATEUR DES PRINCES DE LIGNE	nt821/mt821	€151	37%	3	€142	35%	5	14.5%	35%	61%	5.98%	5	5	1	1	4	5
Available in the tank	BB8944	OCTOPUS DE BIERWA	nt821/mt821	€151	37%	3	€48	35%	2	20.8%	36%	62%	12.58%	4	4	4	4	4	3
Available in the tank	BB8950	EDISON DE CENTFONTAINE	nt821/mt821	€148	39%	3	€58	37%	3	22.6%	38%	65%	11.22%	4	5	3	5	4	1
Available in the tank	BB6883	TULLAMOYLAN MAX	nt821/mt821	€145	62%	3	€19	53%	1	28.1%	46%	88%	12.41%	2	5	3	5	4	1
Available in the tank	BB9463	BBG HONG WANG	nt821/mt821	€141	38%	2	€113	35%	5	15.6%	35%	61%	7.30%	5	5	1	1	3	3
Available in the tank	FSN	FOLON DE CRAS AVERNAS	nt821/mt821	€136	90%	2	€43	83%	2	23.5%	75%	98%	11.01%	1	5	2	4	4	2
Available in the tank	DBZ	MANITOU DE BELLE EAU	nt821/mt821	€129	93%	2	€96	98%	5	17.8%	97%	99%	8.73%	4	4	1	2	4	4
Pre-Order - Female Sexed	BB9553	BENEVOLE DU BOUCHELET	nt821/mt821	€127	36%	1	€73	34%	4	19.4%	34%	61%	9.50%	5	4	1	1	5	5
Available in the tank	BB8947	CACHEMIRE DE DESSOUS LA VILLE	nt821/mt821	€126	36%	1	€71	34%	3	24.6%	35%	60%	9.44%	4	5	2	1	5	5
Available in the tank	BB7443	NEWTON DE FONTENA	nt821/mt821	€125	47%	1	€4	41%	1	30.1%	40%	82%	14.43%	2	5	3	5	4	1
Available in the tank	BB4498	DELURE DE LA BEOLE	nt821/mt821	€124	86%	1	€71	62%	3	25.9%	59%	97%	13.04%	2	4	3	4	5	3
Available in the tank	BB5223	NOX DE L'ORGELOT	nt821/mt821	€115	86%	1	€60	64%	3	26.8%	57%	98%	13.45%	2	2	2	4	1	5
Available in the tank	BB7383	TOP SIDE OUT THERE	nt821/mt821	€99	54%	1	€68	43%	3	18.6%	38%	91%	11.49%	5	1	1	1	5	5
Pre-Order - Female Sexed	BB9580	VERRATI DE COBREVILLE	nt821/mt821	€98	36%	1	€58	34%	3	25.3%	35%	60%	10.53%	4	3	1	1	5	4
Pre-Order - Female Sexed	IDB	ILOT DU BOUCHELET	nt821/mt821	€98	91%	1	€40	95%	2	29.5%	87%	98%	12.85%	3	5	1	2	4	4



Right Task, Right Time



FarmOps has been **DEVELOPED BY OUR VETS** and **RECOMMENDS THE RIGHT TASK AT THE RIGHT TIME** for Suckler farmers who want to see real progress.

Let FarmOps help you manage your breeding season

When your breeding season starts you will get daily insights on your progress and targets as to where you should be. Each day the following 6 parameters will be updated.

1. Expected in Heat

We will estimate the number of cows & heifers that should be in heat today.

This will help flag to you if you have a problem with cows not cycling or heat observation very early.



4. Not served

We will show you the cows and heifers that are eligible to be served (calved over 35 days) and that are not yet served.

This will help identify animals with problems easily.



2. Due for Repeat

We will show you the number of cows & heifers that could repeat today.

These are the animals to keep a close watch on in case of repeat.



5. Potentially Empty

We will calculate each day the number of cows & heifers that are likely to be empty in the herd.

This will help you by giving you a view as to how the breeding season is progressing.



3. Valid Serves

We will count all your serves each day and check how many are valid (e.g. we will exclude 1 day repeats). This can be compared then against the target number of serves set daily for your herd.



6. Stock bulls Required

We will show you how many mature fertile stock bulls that would be required to serve the potentially empty animals in the herd.

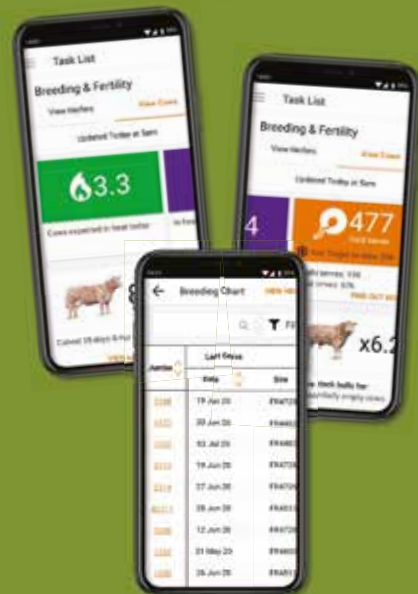


MAKE BETTER MORE INFORMED BREEDING DECISIONS WITH FARMOPS



- Don't forget you can record your DIY AI serves and stock bull serves using FarmOps.
- Use FarmOps to record any serves or scanning details not saved already.
- Did you know you can register your calves with FarmOps?

DOWNLOAD YOUR FREE 90 DAY TRIAL NOW!



FOR CUSTOMER SUPPORT CALL 022 43228 munsterbovine.ie/farmops

Powered by **MUNSTER BOVINE**
Collectively Improving Farm Life

OUR TEAM



John Tobin
Sales & Advisory Manager
087 3832001

West Cork



Declan Keating
Farm Relationship Manager
086 8164024



David Buckley
Breeding Advisor
086 3962114

North Cork



Joe O'Flynn
Farm Relationship Manager
086 4030646



Jack Walsh
Breeding Advisor
087 1030356



Patrick Moloney
Breeding Advisor
083 0049402

South Cork



Anthony Buckley
Farm Relationship Manager
086 0274558



Tom Tobin
Breeding Advisor
087 2758061



Brian Hayes
Breeding Advisor
087 6957999

Limerick



John Meehan
Farm Relationship Manager
086 6054723



Jack Walsh
Breeding Advisor
087 1030356



Pat O'Brien
Breeding Advisor
086 0543335



James Foley
Breeding Advisor
086 1956617

Clare Galway



John Meehan
Farm Relationship Manager
086 6054723



Donal Coppinger
Breeding Advisor
087 3159166

Kerry



James Egan
Farm Relationship Manager
086 3650665



Jack Walsh
Breeding Advisor
087 1030356



James Foley
Breeding Advisor
086 1956617

East Cork /West Waterford



Billy Fitzgerald
Farm Relationship Manager
086 4126727



Patrick Moloney
Breeding Advisor
083 0049402



David Mc Grath
Breeding Advisor
087 2241573

Tipperary / Mitchelstown



Graham Swanton
Farm Relationship Manager
087 7420965



Ben Slee
Breeding Advisor
087 2902031



**FOR ALL AI CALLS IN ALL
AREAS, FREE PHONE
1800 251 020**

**Main Office
Ballyvorisheen, Mallow,
Co. Cork, P51 YF57
t: 022 43228
e: info@munsterbovine.ie
w: www.munsterbovine.ie**

