



**MUNSTER**  
**BOVINE**

Collectively Improving Farm Life



**Production & Type**  
**2021**

# Index

1	DENOVO 2800 PRINCE-ET
2	DENOVO 15551 SUBLIME-ET
3	FR6139 (IG) LISDUFF PERCEPTION
5	KOEPON RAPTOR
6	FR4368 WESTCOAST YAMASKA
7	PROGENESIS REG
8	FR4187 WESTCOAST PERSEUS
9	S3462 SANDY-VALLEY I BATMAN-ET
10	DENOVO 3159 GANDER-ET
11	FR5581 VELDER STARMAKER
12	S3480 DE-SU 14673 APPEAL
13	Active List
15	FR4751 PROGENESIS MOOSE
16	S3579 PROGENESIS WIMBLEDON
17	S3435 LEENHORSTER E-PROFIT
19	S3134 STANTONS APPLICABLE
20	S3537 STANTONS ALLIGATOR-ET
21	S3237 BRENLAND DENVER
23	S3311 STONE-FRONT ARTIST-ET
24	S1488 VAL-BISSON DOORMAN
25	FR4419 WALNUTLAWN SIDEKICK
26	Beef on Dairy
27	Sexed Semen
28	Heat Detection Aids

# Trait Ranking

Top Prod SI	Code	Name	Milk SI
	FR4368	WESTCOAST YAMASKA	149
	S3608	CLAYNOOK ZASBERILLA	135
	FR4355	PINE-TREE FIREFLY-ET	134
	S3462	SANDY-VALLEY I BATMAN-ET	132
	FR4751	PROGENESIS MOOSE	127

Top EBI	Code	Name	Milk SI
		DENOVO 2800 PRINCE-ET	260
		DENOVO 15551 SUBLIME-ET	259
	FR6139	(IG) LISDUFF PERCEPTION	252
		KOEPON RAPTOR	239
	FR4368	WESTCOAST YAMASKA	228

Top Fert SI	Code	Name	Milk SI
	FR6139	(IG) LISDUFF PERCEPTION	99
	FR4746	(IG) FOWLERSTOWN CONTI	92
	S1233	AMIGHETTI NUMERO UNO TV TL TY	78
	FR4688	DE-SU 14118 REGINALD-ET	71
	FR4379	(IG) BALLYDEHOB ADAM	67

Top Milk Kg	Code	Name	Milk SI
	S3448	WESTCOAST SWINGMAN RED	721
	FR4751	PROGENESIS MOOSE	679
	S3537	STANTONS ALLIGATOR-ET	658
	FR5503	PROGENESIS STOXXINDEX	633
	S3462	SANDY-VALLEY I BATMAN-ET	603

Top Health SI	Code	Name	Milk SI
	FR2095	DENMIRE MESDOOR-ET	35
	FR5581	VELDER STARMAKER	35
	FR4688	DE-SU 14118 REGINALD-ET	34
	FR4308	ABS MAYDAY-ET	34
	S3134	STANTONS APPLICABLE	30

Top Solids Kg	Code	Name	Milk SI
	FR4368	WESTCOAST YAMASKA	50
	S3462	SANDY-VALLEY I BATMAN-ET	49
	FR4751	PROGENESIS MOOSE	49
	FR4355	PINE-TREE FIREFLY-ET	49
	S3579	PROGENESIS WIMBLEDON	46

Top Type	Code	Name	Milk SI
	S3134	STANTONS APPLICABLE	5.0
	FR4419	WALNUTLAWN SIDEKICK	4.7
	FR4731	VILLY SILVIO	4.4
	FR4734	OH-RIVER-SYC CRUSHABULL-ET	4.4
	S3537	STANTONS ALLIGATOR-ET	4.1

Top Udder	Code	Name	Milk SI
	FR4419	WALNUTLAWN SIDEKICK	4.3
	FR4731	VILLY SILVIO	4.3
	FR4734	OH-RIVER-SYC CRUSHABULL-ET	4.3
	S3480	DE-SU 14673 APPEAL	4.2
	S3134	STANTONS APPLICABLE	4.0

Top Feet & Legs	Code	Name	Milk SI
	S3134	STANTONS APPLICABLE	4.1
	S3368	DOUBLEW RANGER	3.7
	FR4688	DE-SU 14118 REGINALD-ET	3.6
	FR2095	DENMIRE MESDOOR-ET	3.2
	S3435	LEENHORSTER E-PROFIT	2.9

### DISCLAIMER

Every reasonable effort has been made to ensure that the information provided in this publication is reasonably comprehensive, accurate and clear.

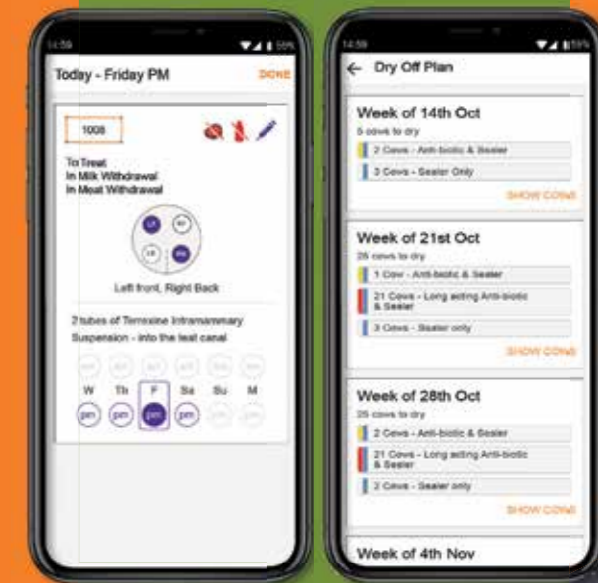


Download  
Your  
**FREE TRIAL**  
Today

FarmOps is Munster Bovine's Farm Operations System, **DEVELOPED BY OUR VETS** and delivered through an app, that **RECOMMENDS THE RIGHT TASK AT THE RIGHT TIME** to Dairy and Beef farmers who want to see real progress.

Latest Release includes the following:

- Breeding and Fertility
- Calving and Calf Registration
- Dry Off Plan incl. Selective Dry Cow Therapy
- Feeds and Sprays
- Health Events and Treatments incl Compliance
- Milk Recording Production and SCC
- Munster Bovine Herd Health Programme



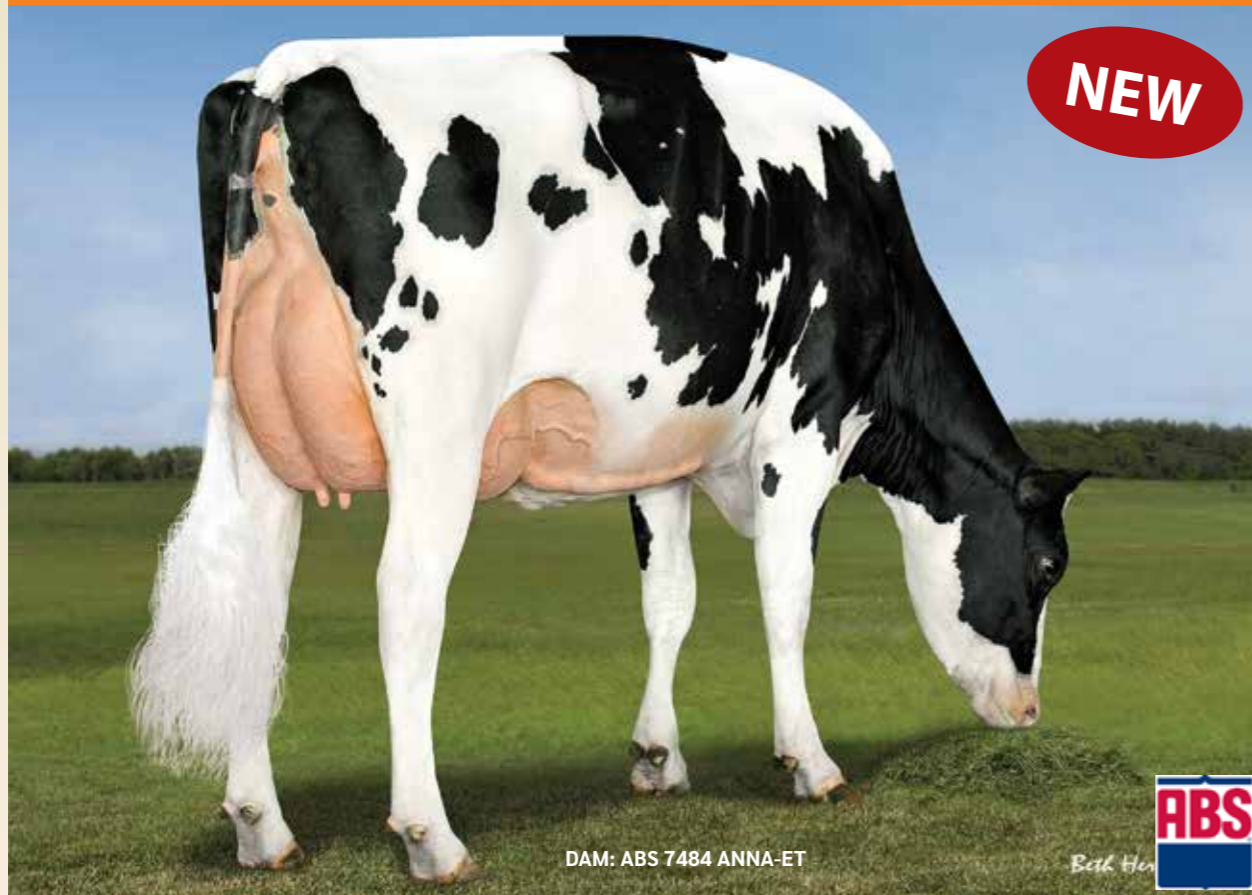


PRE-ORDER

GENOMIC

# DENOVO 2800 PRINCE-ET

Birth Year: 2018    Beta Casein: A1/A2    AAA 243    Herd Book Number: HOL840M003143060701



DAM: ABS 7484 ANNA-ET

SEXED SEMEN   
 MILK SOLIDS   
 HEALTH

EBI OCT. 20 SOURCE ICBF	REL	BOTTOM				MEAN	TOP	
		10%	20%	30%	40%		40%	30%

EBI	<b>260</b>	49%						
Prod. SI	<b>141</b>	69%						
Fert. SI	<b>56</b>	37%						
Calv. SI	<b>54</b>	44%						
Beef. SI	<b>-3</b>	34%						
Maint. SI	<b>-12</b>	32%						
Mgmt. SI	<b>2</b>	52%						
Health SI	<b>22</b>	62%						

PRODUCTION					
Milk Kg	Fat Kg	Protein KG	Solid Kg	Fat %	Prot %
<b>467</b>	<b>32</b>	<b>20</b>	<b>52</b>	<b>0.22</b>	<b>0.07</b>

FERTILITY		CALVING DIFFICULTY					
Calving Interval	Survival	Records	Dairy	Heifer	Diff	Rel	Risk
<b>-2.8</b>	<b>1.6</b>	<b>0</b>	<b>N/A</b>				

MANAGEMENT				DTRS	HERDS
Milk Speed	Temp	SCC	BCS		
<b>-28.5</b>	<b>-0.2</b>	<b>-0.1</b>	<b>0.4</b>	<b>0.0</b>	<b>0.0</b>

SIRE: CAL-ROY-AL YODA-ET    MS: WOODCREST MOGUL YODER-ET    MGS: APINA ALTAEMBASSY-ET  
 DAM: ABS 7484 ANNA-ET (GP 84)    MD: COMPASS-TRT AMRC AE J925-ET (GP 83)    MGD: SEAGULL-BAY MISS AMERICA-ET (EX 91)

## LINEAR EVALUATION - INTERBULL 2020

STATURE	1.4	
CHEST WIDTH	1.2	
BODY DEPTH	1.3	
ANGULARITY	0.8	
RUMP ANGLE	-0.6	
RUMP WIDTH	1.3	
REAR LEG SET	-1.7	
LOCOMOTION	3.2	
FOOT ANGLE	1.4	
FORE UDDER	3.1	
REAR UDDER	3.4	
UDDER SUPPORT	1.7	
UDDER DEPTH	2.5	
TEAT PLACEMENT	1.6	
TEAT LENGTH	-0.3	
OVERALL TYPE	2.7	
OVERALL UDDER	2.5	
OVERALL F&L	2.2	

- New High EBI Yoda son
- Amazing production profile with over 50kgs solids and high components
- ONLY AVAILABLE SEXED

PRE-ORDER

GENOMIC

# DENOVO 15551 SUBLIME-ET

Birth Year: 2018    Beta Casein: A2/A2    AAA 423    Herd Book Number: HOL840M003204164789



DAM: SEAGULL-BAY SPECTR SANDY-ET

SEXED SEMEN   
 A2 A2   
 HIGH TYPE SIRE   
 MILK SOLIDS   
 HEALTH

EBI OCT. 20 SOURCE ICBF	REL	BOTTOM				MEAN	TOP	
		10%	20%	30%	40%		40%	30%

EBI	<b>259</b>	47%						
Prod. SI	<b>112</b>	65%						
Fert. SI	<b>52</b>	35%						
Calv. SI	<b>66</b>	42%						
Beef. SI	<b>-1</b>	33%						
Maint. SI	<b>-8</b>	32%						
Mgmt. SI	<b>8</b>	48%						
Health SI	<b>31</b>	58%						

PRODUCTION					
Milk Kg	Fat Kg	Protein KG	Solid Kg	Fat %	Prot %
<b>437</b>	<b>28</b>	<b>16</b>	<b>44</b>	<b>0.18</b>	<b>0.02</b>

FERTILITY		CALVING DIFFICULTY					
Calving Interval	Survival	Records	Dairy	Heifer	Diff	Rel	Risk
<b>-2.1</b>	<b>2.0</b>	<b>0</b>	<b>N/A</b>				

MANAGEMENT				DTRS	HERDS
Milk Speed	Temp	SCC	BCS		
<b>-26.2</b>	<b>0.0</b>	<b>-0.2</b>	<b>-0.7</b>	<b>0</b>	<b>0</b>

SIRE: N-SPRINGHOPE HONDA-ET    MS: DE-SU 13050 SPECTRE-ET    MGS: MR MOGUL DELTA 1427-ET  
 DAM: SEAGULL-BAY SPECTR SANDY-ET    MD: TRES-REYNAS DELTA 152-ET (VG 86)    MGD: TRES-REYNAS SS LIZZY-ET

## LINEAR EVALUATION - INTERBULL 2020

STATURE	1.5	
CHEST WIDTH	-0.5	
BODY DEPTH	0.8	
ANGULARITY	1.6	
RUMP ANGLE	3.0	
RUMP WIDTH	0.9	
REAR LEG SET	-0.9	
LOCOMOTION	2.8	
FOOT ANGLE	2.1	
FORE UDDER	3.5	
REAR UDDER	3.2	
UDDER SUPPORT	2.2	
UDDER DEPTH	3.2	
TEAT PLACEMENT	1.3	
TEAT LENGTH	-4.5	
OVERALL TYPE	3.1	
OVERALL UDDER	2.7	
OVERALL F&L	2.7	

- Another balanced bull
- High EBI with good type
- 40+ kgs of solids with positive components
- Health improver



# FR6139 (IG) LISDUFF PERCEPTION

Birth Year: 2019    Beta Casein: AAA

Herd Book Number: **HOLIRLM224508745649**



FERTILITY IMPROVER   
 HIGH TYPE SIRE   
 MILK SOLIDS   
 HEALTH

EBI OCT. 20 SOURCE ICBF	REL	10%	20%	30%	40%	MEAN	40%	30%	20%	10%	
<b>EBI 252</b>	57%	[Progress bar]									
Prod. SI	<b>100</b>	76%	[Progress bar]								
Fert. SI	<b>99</b>	44%	[Progress bar]								
Calv. SI	<b>39</b>	58%	[Progress bar]								
Beef. SI	<b>-5</b>	43%	[Progress bar]								
Maint. SI	<b>-2</b>	38%	[Progress bar]								
Mgmt. SI	<b>8</b>	57%	[Progress bar]								
Health SI	<b>13</b>	67%	[Progress bar]								

LINEAR EVALUATION - INTERBULL 2020	
STATURE	1.3
CHEST WIDTH	-0.4
BODY DEPTH	-0.8
ANGULARITY	0.1
RUMP ANGLE	-0.3
RUMP WIDTH	0.3
REAR LEG SET	-1.2
LOCOMOTION	2.2
FOOT ANGLE	2.1
FORE UDDER	2.0
REAR UDDER	1.1
UDDER SUPPORT	1.1
UDDER DEPTH	2.5
TEAT PLACEMENT	0.4
TEAT LENGTH	1.8
OVERALL TYPE	2.5
OVERALL UDDER	1.7
OVERALL F&L	1.8

PRODUCTION					
Milk Kg	Fat Kg	Protein KG	Solid Kg	Fat %	Prot %
<b>397</b>	<b>17</b>	<b>17</b>	<b>34</b>	<b>0.03</b>	<b>0.06</b>

FERTILITY		CALVING DIFFICULTY			
Calving Interval	Survival	Records	Dairy Heifer Diff	Rel	Risk
<b>-5.6</b>	<b>2.3</b>	<b>0</b>	<b>5.8</b>	<b>60%</b>	<b>Low</b>

MANAGEMENT				DTRS	HERDS
Milk Speed	Temp	SCC	BCS	<b>0</b>	<b>0</b>
<b>-20.4</b>	<b>0.0</b>	<b>-0.19</b>	<b>0.8</b>		

SIRE: WESTCOAST PERSEUS	MS: COGENT TWIST	MGS: LONG-LANGS OMAN OMAN
DAM: LISDUFF LESLIE 153 EX	MD: LISDUFF LESLIE 115 ET EX	MGD: LISDUFF LESLIE 81 EX

# LIVESTOCK SALES

Take the pain out of searching for your ideal animals. Our experienced team will source quality progeny from top quality herds.



for more information contact  
**Terry Dillon**  
 086 2529036





PRE-ORDER

GENOMIC

# KOEPON RAPTOR

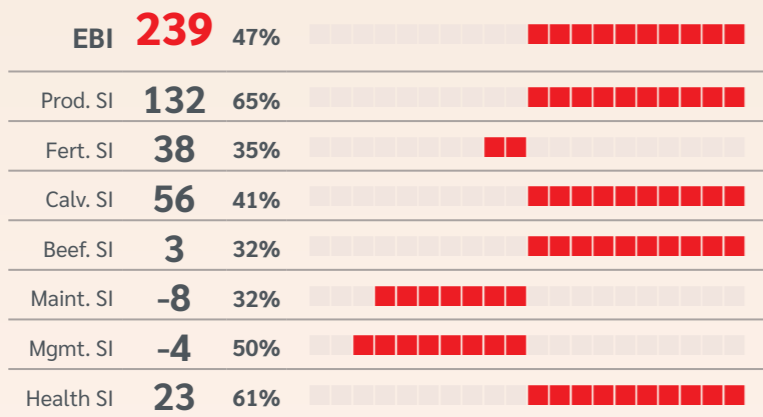
Birth Year: 2019 Beta Casein: A1/A2 AAA

Herd Book Number: HOLNLDM000682613808



SEXED SEMEN 
 HIGH TYPE SIRE 
 MILK SOLIDS 
 HEALTH

EBI OCT. 20 SOURCE ICBF REL 10% 20% 30% 40% MEAN 40% 30% 20% 10%



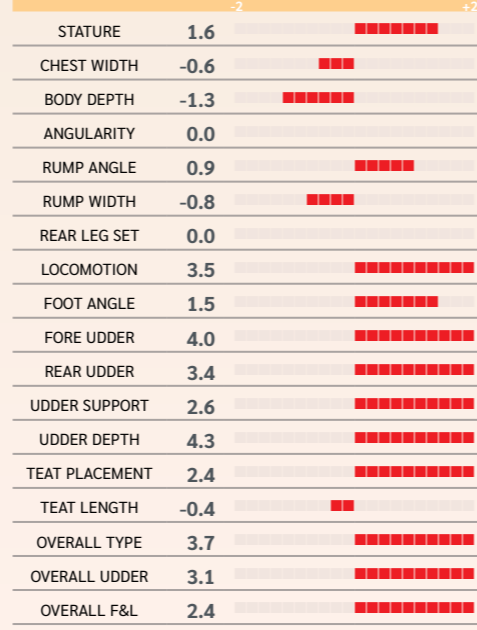
PRODUCTION					
Milk Kg	Fat Kg	Protein KG	Solid Kg	Fat %	Prot %
545	29	20	50	0.13	0.03

FERTILITY		CALVING DIFFICULTY					
Calving Interval	Survival	Records	Dairy	Heifer	Diff	Rel	Risk
-1.4	1.6	0	N/A				

MANAGEMENT				DTRS	HERDS
Milk Speed	Temp	SCC	BCS	0.0	0.0
-19.3	-0.3	-0.2	0.7		

SIRE: PEAK ALTALAWSON-ET MS: BOMAZ ALTATOPSHOT-ET MGS: EDG RUBICON-ET  
 DAM: KOEPON TOPSHOT RUBY 5 MD: KOEPON RUBY-ANN MGD: ABIR REGENIA

## LINEAR EVALUATION - INTERBULL 2020



- Exciting new Altalawson son from ABS
- Great production profile
- 50kgs of solids and positive components

PRE-ORDER

GENOMIC

# FR4368 WESTCOAST YAMASKA

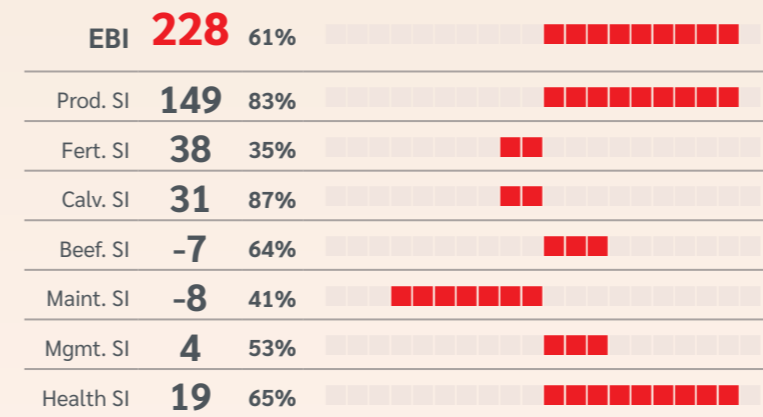
Birth Year: 2016 Beta Casein: A2A2 AAA 432516

Herd Book Number: HOLCANM000012371165



SEXED SEMEN 
 A2 A2 
 HIGH TYPE SIRE 
 MILK SOLIDS 
 HEALTH

EBI OCT. 20 SOURCE ICBF REL 10% 20% 30% 40% MEAN 40% 30% 20% 10%



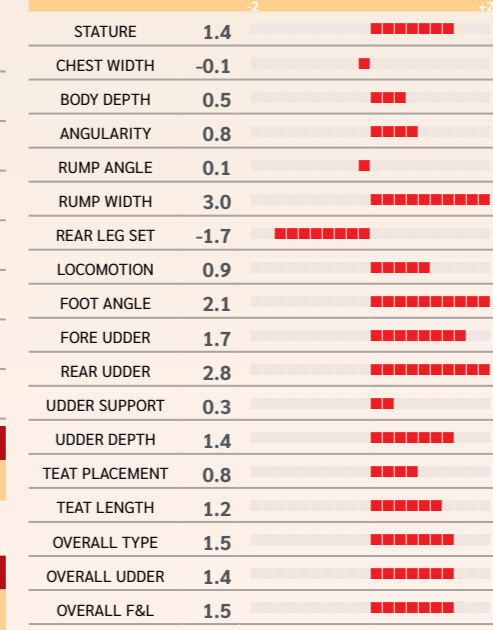
PRODUCTION					
Milk Kg	Fat Kg	Protein KG	Solid Kg	Fat %	Prot %
359	30	20	50	0.27	0.13

FERTILITY		CALVING DIFFICULTY					
Calving Interval	Survival	Records	Dairy	Heifer	Diff	Rel	Risk
-2.3	0.7	1716	7.4	94%	Moderate		

MANAGEMENT				DTRS	HERDS
Milk Speed	Temp	SCC	BCS	0	0
-7.7	0.1	-0.14	-0.1		

SIRE: SANDY-VALLEY AFTERBURNER-ET MS: WOODCREST MOGUL YODER MGS: BADGER-BLUFF FANNY FREDDIE  
 DAM: MORNINGVIEW YODER 4342-ET VG MD: MORNINGVIEW FREDDIE MIMI-ET (VG 88) MGD: MORNINGVIEW SHUTTLE MAUI-ET (EX 90)

## LINEAR EVALUATION - INTERBULL 2020



- Super reports on Progeny
- Production with strength
- 50kg Solids with amazing components
- Can't wait to see them milking this Spring

PRE-ORDER

GENOMIC

# PROGENESIS REG

Birth Year: 2019    Beta Casein: AAA    243156

Herd Book Number: **HOLCANM000013353788**



MGD: FAIRMONT TUFFENUFF RIDGE-ET

SEMEX  
Both Herzes



EBI OCT. 20 SOURCE ICBF    REL    10%    20%    30%    40%    MEAN    40%    30%    20%    10%

EBI	<b>224</b>	46%	<div style="width: 46%;"><div style="width: 46%;"></div></div>
Prod. SI	<b>155</b>	65%	<div style="width: 65%;"><div style="width: 65%;"></div></div>
Fert. SI	<b>17</b>	34%	<div style="width: 34%;"><div style="width: 34%;"></div></div>
Calv. SI	<b>46</b>	41%	<div style="width: 41%;"><div style="width: 41%;"></div></div>
Beef. SI	<b>2</b>	32%	<div style="width: 32%;"><div style="width: 32%;"></div></div>
Maint. SI	<b>-18</b>	32%	<div style="width: 32%;"><div style="width: 32%;"></div></div>
Mgmt. SI	<b>4</b>	50%	<div style="width: 50%;"><div style="width: 50%;"></div></div>
Health SI	<b>17</b>	60%	<div style="width: 60%;"><div style="width: 60%;"></div></div>

### PRODUCTION

Milk Kg	Fat Kg	Protein KG	Solid Kg	Fat %	Prot %
<b>648</b>	<b>30</b>	<b>26</b>	<b>56</b>	<b>0.08</b>	<b>0.06</b>

### FERTILITY

Calving Interval	Survival
<b>-0.5</b>	<b>0.8</b>

### CALVING DIFFICULTY

Records	Dairy	Heifer	Diff	Rel	Risk
<b>0</b>	<b>0</b>	<b>N/A</b>	<b>N/A</b>		

### MANAGEMENT

Milk Speed	Temp	SCC	BCS
<b>-27.9</b>	<b>-0.1</b>	<b>-0.2</b>	<b>-0.8</b>

### LINEAR EVALUATION - INTERBULL 2020

STATURE	3.1	<div style="width: 3.1;"><div style="width: 3.1;"></div></div>
CHEST WIDTH	0.6	<div style="width: 0.6;"><div style="width: 0.6;"></div></div>
BODY DEPTH	1.7	<div style="width: 1.7;"><div style="width: 1.7;"></div></div>
ANGULARITY	1.9	<div style="width: 1.9;"><div style="width: 1.9;"></div></div>
RUMP ANGLE	-0.9	<div style="width: -0.9;"><div style="width: -0.9;"></div></div>
RUMP WIDTH	4.4	<div style="width: 4.4;"><div style="width: 4.4;"></div></div>
REAR LEG SET	-0.6	<div style="width: -0.6;"><div style="width: -0.6;"></div></div>
LOCOMOTION	3.5	<div style="width: 3.5;"><div style="width: 3.5;"></div></div>
FOOT ANGLE	3.3	<div style="width: 3.3;"><div style="width: 3.3;"></div></div>
FORE UDDER	4.4	<div style="width: 4.4;"><div style="width: 4.4;"></div></div>
REAR UDDER	3.7	<div style="width: 3.7;"><div style="width: 3.7;"></div></div>
UDDER SUPPORT	2.8	<div style="width: 2.8;"><div style="width: 2.8;"></div></div>
UDDER DEPTH	3.8	<div style="width: 3.8;"><div style="width: 3.8;"></div></div>
TEAT PLACEMENT	3.4	<div style="width: 3.4;"><div style="width: 3.4;"></div></div>
TEAT LENGTH	-1.1	<div style="width: -1.1;"><div style="width: -1.1;"></div></div>
OVERALL TYPE	3.9	<div style="width: 3.9;"><div style="width: 3.9;"></div></div>
OVERALL UDDER	3.5	<div style="width: 3.5;"><div style="width: 3.5;"></div></div>
OVERALL F&L	2.8	<div style="width: 2.8;"><div style="width: 2.8;"></div></div>

- New Altalawson son
- Balanced sire for production & type
- Amazing production figures

SIRE: PEAK ALTALAWSON-ET	MS: PINE-TREE PROPHECY	MGS: MR MOGUL DELTA 1427-ET
DAM: PROGENESIS PROPHCY RASPUTIN	MD: FAIRMONT DELTA RELLA	MGD: FAIRMONT TUFFENUFF RIDGE-ET (VG 86)

PRE-ORDER

PROVEN

# FR4187 WESTCOAST PERSEUS

Birth Year: 2015    Beta Casein: A2A2    126345

Herd Book Number: **HOLCANM000012283318**



PERSEUS DAUGHTERS

SEMEX



EBI OCT. 20 SOURCE ICBF    REL    10%    20%    30%    40%    MEAN    40%    30%    20%    10%

EBI	<b>224</b>	77%	<div style="width: 77%;"><div style="width: 77%;"></div></div>
Prod. SI	<b>121</b>	91%	<div style="width: 91%;"><div style="width: 91%;"></div></div>
Fert. SI	<b>46</b>	66%	<div style="width: 66%;"><div style="width: 66%;"></div></div>
Calv. SI	<b>36</b>	89%	<div style="width: 89%;"><div style="width: 89%;"></div></div>
Beef. SI	<b>3</b>	82%	<div style="width: 82%;"><div style="width: 82%;"></div></div>
Maint. SI	<b>-8</b>	50%	<div style="width: 50%;"><div style="width: 50%;"></div></div>
Mgmt. SI	<b>8</b>	62%	<div style="width: 62%;"><div style="width: 62%;"></div></div>
Health SI	<b>19</b>	76%	<div style="width: 76%;"><div style="width: 76%;"></div></div>

### PRODUCTION

Milk Kg	Fat Kg	Protein KG	Solid Kg	Fat %	Prot %
<b>571</b>	<b>19</b>	<b>22</b>	<b>42</b>	<b>-0.05</b>	<b>0.05</b>

### FERTILITY

Calving Interval	Survival
<b>-2.1</b>	<b>1.5</b>

### CALVING DIFFICULTY

Records	Dairy	Heifer	Diff	Rel	Risk
<b>4489</b>	<b>4.9</b>	<b>99%</b>	<b>Low</b>		

### MANAGEMENT

Milk Speed	Temp	SCC	BCS
<b>-26.1</b>	<b>0.0</b>	<b>-0.24</b>	<b>0.4</b>

### LINEAR EVALUATION - INTERBULL 2020

STATURE	1.1	<div style="width: 1.1;"><div style="width: 1.1;"></div></div>
CHEST WIDTH	-0.1	<div style="width: -0.1;"><div style="width: -0.1;"></div></div>
BODY DEPTH	0.4	<div style="width: 0.4;"><div style="width: 0.4;"></div></div>
ANGULARITY	0.8	<div style="width: 0.8;"><div style="width: 0.8;"></div></div>
RUMP ANGLE	-2.0	<div style="width: -2.0;"><div style="width: -2.0;"></div></div>
RUMP WIDTH	0.9	<div style="width: 0.9;"><div style="width: 0.9;"></div></div>
REAR LEG SET	-1.8	<div style="width: -1.8;"><div style="width: -1.8;"></div></div>
LOCOMOTION	1.5	<div style="width: 1.5;"><div style="width: 1.5;"></div></div>
FOOT ANGLE	3.2	<div style="width: 3.2;"><div style="width: 3.2;"></div></div>
FORE UDDER	3.9	<div style="width: 3.9;"><div style="width: 3.9;"></div></div>
REAR UDDER	3.4	<div style="width: 3.4;"><div style="width: 3.4;"></div></div>
UDDER SUPPORT	3.7	<div style="width: 3.7;"><div style="width: 3.7;"></div></div>
UDDER DEPTH	3.2	<div style="width: 3.2;"><div style="width: 3.2;"></div></div>
TEAT PLACEMENT	2.0	<div style="width: 2.0;"><div style="width: 2.0;"></div></div>
TEAT LENGTH	-0.6	<div style="width: -0.6;"><div style="width: -0.6;"></div></div>
OVERALL TYPE	3.6	<div style="width: 3.6;"><div style="width: 3.6;"></div></div>
OVERALL UDDER	3.4	<div style="width: 3.4;"><div style="width: 3.4;"></div></div>
OVERALL F&L	2.0	<div style="width: 2.0;"><div style="width: 2.0;"></div></div>

- Ireland's most popular Type & Production sire.
- His daughters are excelling around the world
- Average Classification score is 83 points

SIRE: SANDY-VALLEY-I PENMANSHIP	MS: VAL-BISSON DOORMAN	MGS: ROYLANE SOCRA ROBUST-ET (VG 88)
DAM: VIEW-HOME DRMAN WSCONSIN-ET (VG 88)	MD: PINE-TREE 2149ROBST 4846-ET (VG 87)	MGD: PINE-TREE ZENITH SHEEN (VG 87)



PRE-ORDER

GENOMIC

# S3462 SANDY-VALLEY I BATMAN-ET

Birth Year: 2017    Beta Casein: A1/A2    AAA    423165    Herd Book Number: HOL840M003140616408



GDAM & DAM

SEXED SEMEN   
 HIGH TYPE SIRE   
 MILK SOLIDS   
 HEALTH   
 EASY CALVING SIRE

EBI OCT. 20 SOURCE ICBF    REL    10%    20%    30%    40%    MEAN    40%    30%    20%    10%

EBI	<b>215</b>	54%	[Progress bar]									
Prod. SI	<b>132</b>	71%	[Progress bar]									
Fert. SI	<b>26</b>	42%	[Progress bar]									
Calv. SI	<b>54</b>	62%	[Progress bar]									
Beef. SI	<b>-5</b>	34%	[Progress bar]									
Maint. SI	<b>-9</b>	33%	[Progress bar]									
Mgmt. SI	<b>1</b>	54%	[Progress bar]									
Health SI	<b>17</b>	64%	[Progress bar]									

PRODUCTION					
Milk Kg	Fat Kg	Protein KG	Solid Kg	Fat %	Prot %
<b>603</b>	<b>27</b>	<b>22</b>	<b>49</b>	<b>0.06</b>	<b>0.03</b>

FERTILITY		CALVING DIFFICULTY					
Calving Interval	Survival	Records	Dairy	Heifer	Diff	Rel	Risk
<b>-0.6</b>	<b>1.5</b>	<b>16</b>	<b>5.0</b>	<b>52%</b>	<b>Low</b>		

MANAGEMENT				DTRS	HERDS
Milk Speed	Temp	SCC	BCS		
<b>-21.5</b>	<b>-0.2</b>	<b>-0.08</b>	<b>-0.1</b>	<b>0</b>	<b>0</b>

SIRE: SILVERRIDGE V IMAX    MS: S-S-I MONTRUSS JEDI-ET    MGS: DE-SU 11236 BALISTO  
 DAM: SANDY-VALLEY J BAHAMA-ET (EX 90)    MD: SANDY-VALLEY BL PARADISE-ET (EX 93)    MGD: SANDY-VALLEY NU PERCIOUS-ET (VG 88)

LINEAR EVALUATION - INTERBULL 2020

STATURE	0.7	[Progress bar]
CHEST WIDTH	0.3	[Progress bar]
BODY DEPTH	0.5	[Progress bar]
ANGULARITY	1.1	[Progress bar]
RUMP ANGLE	-0.6	[Progress bar]
RUMP WIDTH	-1.3	[Progress bar]
REAR LEG SET	-0.4	[Progress bar]
LOCOMOTION	2.0	[Progress bar]
FOOT ANGLE	1.8	[Progress bar]
FORE UDDER	3.5	[Progress bar]
REAR UDDER	3.4	[Progress bar]
UDDER SUPPORT	2.6	[Progress bar]
UDDER DEPTH	3.1	[Progress bar]
TEAT PLACEMENT	1.8	[Progress bar]
TEAT LENGTH	-1.9	[Progress bar]
OVERALL TYPE	2.5	[Progress bar]
OVERALL UDDER	2.6	[Progress bar]
OVERALL F&L	1.1	[Progress bar]

- Another bull that offers the full package
- Nearly 50kg solids & positive components
- High EBI with Production & Type
- Super sire stack

PRE-ORDER

GENOMIC

# DENOVO 3159 GANDER-ET

Birth Year: 2019    Beta Casein:    AAA       Herd Book Number: HOL840M003201755687



LARCREST CALE EX94 - 4TH DAM

SEXED SEMEN   
 FERTILITY IMPROVER   
 MILK SOLIDS   
 HEALTH

EBI OCT. 20 SOURCE ICBF    REL    10%    20%    30%    40%    MEAN    40%    30%    20%    10%

EBI	<b>187</b>	47%	[Progress bar]									
Prod. SI	<b>114</b>	66%	[Progress bar]									
Fert. SI	<b>12</b>	35%	[Progress bar]									
Calv. SI	<b>44</b>	42%	[Progress bar]									
Beef. SI	<b>0</b>	33%	[Progress bar]									
Maint. SI	<b>-2</b>	32%	[Progress bar]									
Mgmt. SI	<b>1</b>	52%	[Progress bar]									
Health SI	<b>18</b>	62%	[Progress bar]									

PRODUCTION					
Milk Kg	Fat Kg	Protein KG	Solid Kg	Fat %	Prot %
<b>475</b>	<b>22</b>	<b>19</b>	<b>41</b>	<b>0.06</b>	<b>0.05</b>

FERTILITY		CALVING DIFFICULTY					
Calving Interval	Survival	Records	Dairy	Heifer	Diff	Rel	Risk
<b>0.5</b>	<b>1.5</b>	<b>0</b>	<b>N/A</b>				

MANAGEMENT				DTRS	HERDS
Milk Speed	Temp	SCC	BCS		
<b>-17.3</b>	<b>-0.1</b>	<b>-0.1</b>	<b>0.3</b>	<b>0.0</b>	<b>0.0</b>

SIRE: DENOVO 7947 GLITZ-ET    MS: PINE-TREE VERONA    MGS: UECKER SUPERSIRE JOSUPER-ET  
 DAM: ABS VERONA 7759-ET    MD: MS CARDIGANS JS CASHMERE (VG 85)    MGD: LARCREST CARDIGAN (VG 86)

LINEAR EVALUATION - INTERBULL 2020

STATURE	1.1	[Progress bar]
CHEST WIDTH	0.3	[Progress bar]
BODY DEPTH	-0.2	[Progress bar]
ANGULARITY	0.6	[Progress bar]
RUMP ANGLE	-0.5	[Progress bar]
RUMP WIDTH	1.8	[Progress bar]
REAR LEG SET	0.7	[Progress bar]
LOCOMOTION	2.3	[Progress bar]
FOOT ANGLE	0.4	[Progress bar]
FORE UDDER	2.3	[Progress bar]
REAR UDDER	2.7	[Progress bar]
UDDER SUPPORT	2.6	[Progress bar]
UDDER DEPTH	2.5	[Progress bar]
TEAT PLACEMENT	1.2	[Progress bar]
TEAT LENGTH	-1.5	[Progress bar]
OVERALL TYPE	1.9	[Progress bar]
OVERALL UDDER	2.0	[Progress bar]
OVERALL F&L	1.5	[Progress bar]

- This bull is better than his index suggests
- Super fertility figures in the US
- PL +7.1 and DPR +3.6
- Production & components improver

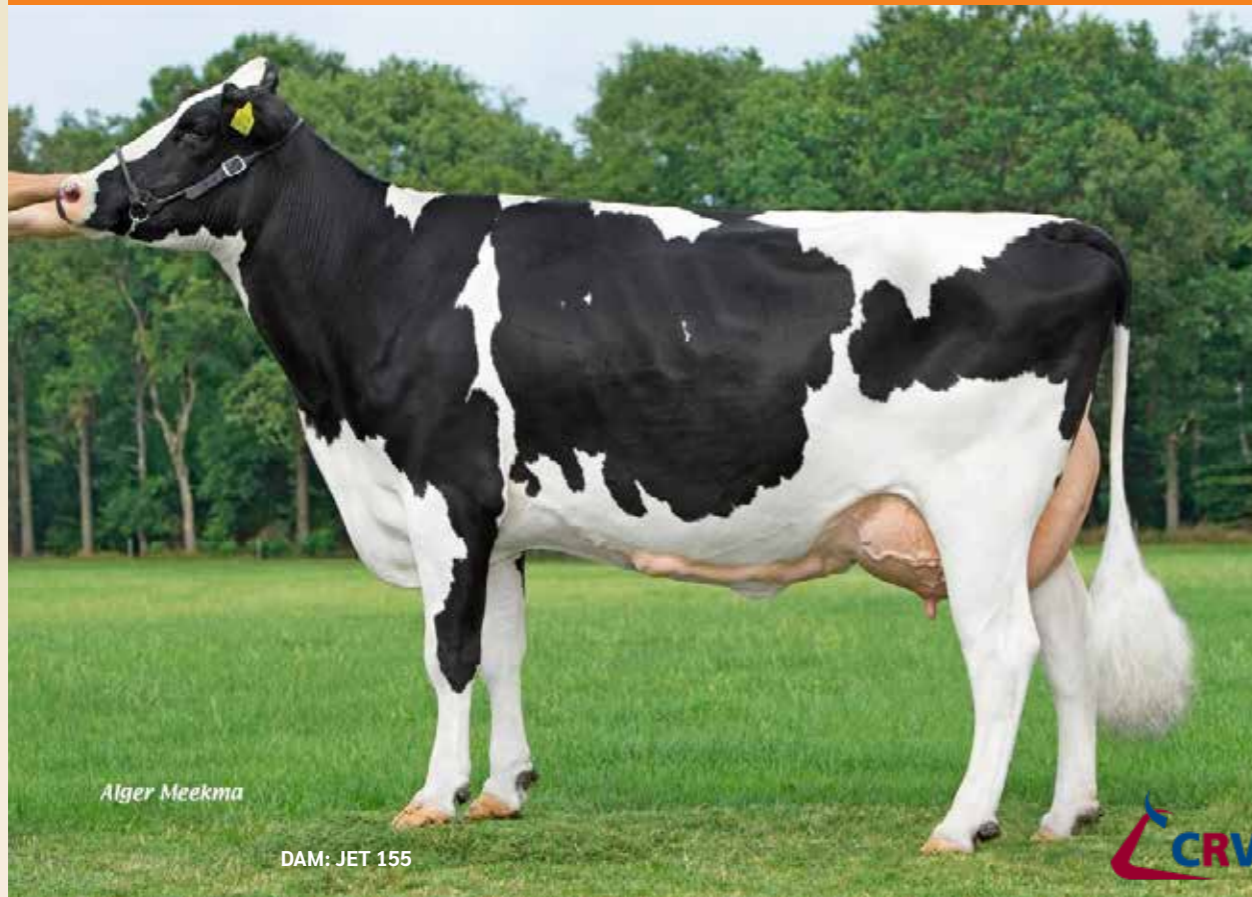


PRE-ORDER

GENOMIC

# FR5581 VELDER STARMAKER

Birth Year: 2018    Beta Casein: A2A2    AAA    234156    Herd Book Number: HOLNLDM000565113832



Alger Meekma

DAM: JET 155



EBI OCT. 20 SOURCE ICBF	REL	BOTTOM	MEAN	TOP
		10% 20% 30% 40%	40% 30% 20% 10%	
EBI <b>237</b>	53%	[Progress bar]		[Progress bar]
Prod. SI <b>109</b>	72%	[Progress bar]		[Progress bar]
Fert. SI <b>67</b>	43%	[Progress bar]		[Progress bar]
Calv. SI <b>44</b>	44%	[Progress bar]		[Progress bar]
Beef. SI <b>-15</b>	37%	[Progress bar]		[Progress bar]
Maint. SI <b>-5</b>	35%	[Progress bar]		[Progress bar]
Mgmt. SI <b>3</b>	53%	[Progress bar]		[Progress bar]
Health SI <b>35</b>	63%	[Progress bar]		[Progress bar]

PRODUCTION					
Milk Kg	Fat Kg	Protein KG	Solid Kg	Fat %	Prot %
<b>352</b>	<b>22</b>	<b>16</b>	<b>38</b>	<b>0.13</b>	<b>0.07</b>

FERTILITY		CALVING DIFFICULTY			
Calving Interval	Survival	Records	Dairy	Heifer	Diff
<b>-2.9</b>	<b>2.4</b>	<b>0</b>	<b>5.9</b>	<b>49%</b>	<b>Low</b>

MANAGEMENT				DTRS	HERDS
Milk Speed	Temp	SCC	BCS		
<b>-14.1</b>	<b>0.0</b>	<b>-0.31</b>	<b>0.2</b>	<b>0</b>	<b>0</b>

## LINEAR EVALUATION - INTERBULL 2020

STATURE	1.3	[Progress bar]
CHEST WIDTH	-1.2	[Progress bar]
BODY DEPTH	-1.5	[Progress bar]
ANGULARITY	0.5	[Progress bar]
RUMP ANGLE	-0.3	[Progress bar]
RUMP WIDTH	-0.4	[Progress bar]
REAR LEG SET	-0.4	[Progress bar]
LOCOMOTION	3.2	[Progress bar]
FOOT ANGLE	1.2	[Progress bar]
FORE UDDER	3.3	[Progress bar]
REAR UDDER	3.4	[Progress bar]
UDDER SUPPORT	1.9	[Progress bar]
UDDER DEPTH	4.1	[Progress bar]
TEAT PLACEMENT	0.4	[Progress bar]
TEAT LENGTH	-1.1	[Progress bar]
OVERALL TYPE	3.5	[Progress bar]
OVERALL UDDER	3.1	[Progress bar]
OVERALL F&L	2.6	[Progress bar]

- Super EBI with great udders
- Fertility and Health Improver
- Pedigree stacked with Protein

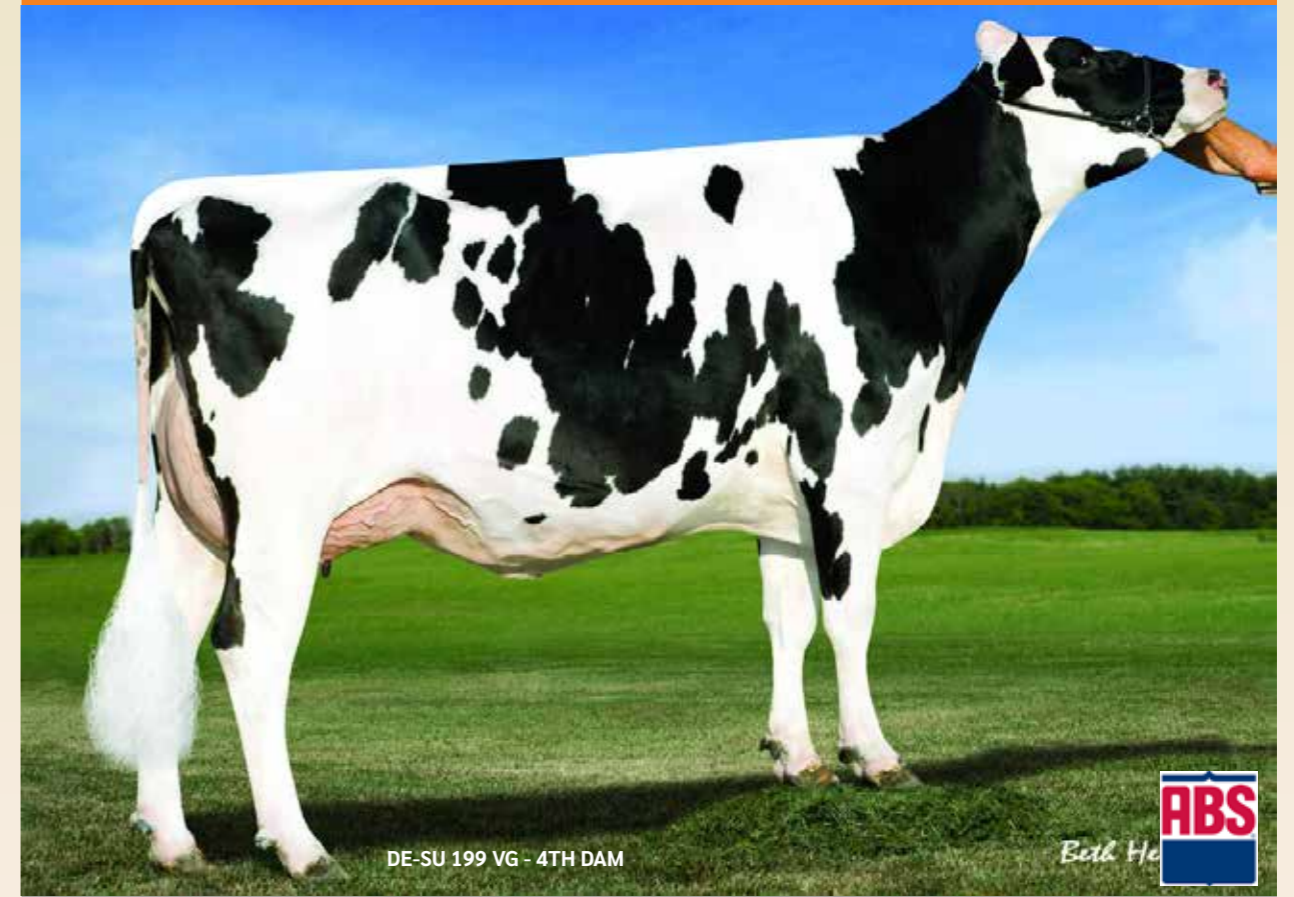
SIRE: STANTONS ADORABLE	MS: BUISWEEIRD MOBILE	MGS: DELTA ATLANTIC
DAM: JET 155	MD: JETT 127	MGD: JETT 107

PRE-ORDER

GENOMIC

# S3480 DE-SU 14673 APPEAL

Birth Year: 2017    Beta Casein: A1/A2    AAA    432    Herd Book Number: HOL840M003145627347



DE-SU 199 VG - 4TH DAM



EBI OCT. 20 SOURCE ICBF	REL	BOTTOM	MEAN	TOP
		10% 20% 30% 40%	40% 30% 20% 10%	
EBI <b>221</b>	51%	[Progress bar]		[Progress bar]
Prod. SI <b>113</b>	71%	[Progress bar]		[Progress bar]
Fert. SI <b>35</b>	42%	[Progress bar]		[Progress bar]
Calv. SI <b>47</b>	44%	[Progress bar]		[Progress bar]
Beef. SI <b>-6</b>	33%	[Progress bar]		[Progress bar]
Maint. SI <b>-11</b>	32%	[Progress bar]		[Progress bar]
Mgmt. SI <b>11</b>	51%	[Progress bar]		[Progress bar]
Health SI <b>30</b>	62%	[Progress bar]		[Progress bar]

PRODUCTION					
Milk Kg	Fat Kg	Protein KG	Solid Kg	Fat %	Prot %
<b>498</b>	<b>25</b>	<b>18</b>	<b>43</b>	<b>0.08</b>	<b>0.02</b>

FERTILITY		CALVING DIFFICULTY			
Calving Interval	Survival	Records	Dairy	Heifer	Diff
<b>-0.9</b>	<b>1.9</b>	<b>0</b>	<b>3.6</b>	<b>47%</b>	<b>Low</b>

MANAGEMENT				DTRS	HERDS
Milk Speed	Temp	SCC	BCS		
<b>-31.3</b>	<b>0.1</b>	<b>-0.13</b>	<b>0.2</b>	<b>0</b>	<b>0</b>

## LINEAR EVALUATION - INTERBULL 2020

STATURE	0.6	[Progress bar]
CHEST WIDTH	-0.6	[Progress bar]
BODY DEPTH	-0.5	[Progress bar]
ANGULARITY	0.9	[Progress bar]
RUMP ANGLE	-0.6	[Progress bar]
RUMP WIDTH	1.8	[Progress bar]
REAR LEG SET	-0.1	[Progress bar]
LOCOMOTION	3.1	[Progress bar]
FOOT ANGLE	1.2	[Progress bar]
FORE UDDER	5.1	[Progress bar]
REAR UDDER	4.4	[Progress bar]
UDDER SUPPORT	3.7	[Progress bar]
UDDER DEPTH	3.7	[Progress bar]
TEAT PLACEMENT	1.6	[Progress bar]
TEAT LENGTH	-2.7	[Progress bar]
OVERALL TYPE	4.2	[Progress bar]
OVERALL UDDER	4.2	[Progress bar]
OVERALL F&L	2.2	[Progress bar]

- Great balance of production and Type
- Super udder bull
- One of ABS Achiever's best sons

SIRE: ABS ACHIEVER-ET	MS: MR SHOT DOZER 1491	MGS: FARNEAR-TBR-BH CASCOIN
DAM: DE-SU DOZER 5479-ET	MD: DE-SU CASHCOIN 3597	MGD: DE-SU 1863 (VG 87)



# Active List

Code	Name	Breed	Proof Source	EBI	Prod SI	Fert SI	Health SI	Herd-book Cat	Milk Kg	Fat Kg	Protein Kg		Solids Kg	Fat %	Protein %	Num dairy calv recs	Dairy Heifer calv diff	calv diff rel	Elig dairy heifers	Overall Type	Udder	Feet & Legs	Sire
FR4380	(IG) ARDNASALEM MONTY ET	HO	GS	170	107	37	13	PED	471	15	20		35	-0.06	0.07	891	7.1	80	Moderate	1.9	2.4	0.2	VIEW-HOME MONTEREY-ET
FR4379	(IG) BALLYDEHOB ADAM	HO	GS	158	64	67	5	PED	239	13	10		23	0.06	0.03	3717	5.8	92	Low	1.4	1.7	0.5	BOLDI ADMIRATION
FR4091	(IG) EVERGREEN ALADDIN	HO	DP-IRL	142	77	29	15	PED	393	14	14		28	-0.03	0.02	1031	7.8	85	Moderate	2.9	2.9	2.2	BALLYCAIRN CORINTHIAN
FR4746	(IG) FOWLERSTOWN CONTI	HO	GS	213	72	92	5	PED	215	15	10		25	0.10	0.05	260	5.3	67	Low	1.3	0.8	1.7	RADNEY STEVE ET
EKK	(IG) KILGARRIFFE EMERALD STAR	HO	DP-IRL	153	99	28	15	PED	288	15	16		31	0.07	0.10	510	6.8	82	Low	2.0	1.3	2.9	BOMAZ MARION EMERALD 648-ET
FR6139	(IG) LISDUFF PERCEPTION	HO	GS	252	100	99	13	PED	397	17	17		34	0.03	0.06	0	5.8	60	Low	2.5	1.7	1.8	WESTCOAST PERSEUS
FR4481	(IG) MONABROGUE EBONY	HO	GS	210	109	63	-4	PED	291	15	18		33	0.06	0.13	9965	7.2	99	Low	1.1	0.9	0.5	COOLNASOON ART
FR5971	(IG) VIADUCTVIEW FIVEO	HO	GS	251	97	104	10	PED	190	22	12		33	0.24	0.09	0	6.0	54	Low	0.1	0.4	0.1	(IG) BALLYGOWN ALBERT
FR4689	ABS JERONIMO-P-ET	HO	GS	208	111	38	27	PED	444	20	19		39	0.05	0.06	181	6.9	79	Moderate	3.2	3.0	1.1	ENDCO SUPERHERO-ET
S1233	AMIGHETTI NUMERO UNO TVTL TY	HO	DP-IRL	144	53	78	11	PED	299	17	8		24	0.08	-0.04	883	9.8	95	High	1.9	2.0	0.7	LONG-LANGS OMAN OMAN TVTL TY
FR2473	BENNER BARDO	HO	DP-INT	132	105	0	11	PED	381	23	16		38	0.13	0.05	80	6.8	68	Moderate	3.1	2.7	2.7	VIEWXSAULE FLAME-ET
FR4688	DE-SU 14118 REGINALD-ET	HO	GS	203	88	71	34	PED	509	21	15		36	0.02	-0.03	233	8.7	74	High	3.3	2.2	3.6	WELCOME LEGENDARY 2870-ET
S3480	DE-SU 14673 APPEAL	HO	GS	221	113	35	30	PED	498	25	18		43	0.08	0.02	0	3.7	47	Low	4.2	4.2	2.2	ABS ACHIEVER-ET
S3177	DELEGATE VAN DE PEUL	HO	DP-INT	164	84	50	23	PED	141	14	11		26	0.15	0.11	25	7.1	50	Moderate	1.6	1.6	1.5	DE VRENDT DEPUTY
FR5599	DELTA BUILDER P	HO	GS	187	107	38	23	PED	571	21	19		41	-0.01	0.00	5	4.6	52	Low	3.0	2.6	2.3	GRANT D FINISH
S3331	DELTA ROSEBUD-RED	HO	GS	134	68	32	14	PED	288	6	14		20	-0.08	0.07	3	7.7	47	Moderate	2.4	2.3	1.2	FILOU RDC
FR2095	DENMIRE MESDOOR-ET	HO	DP-IRL	142	57	32	35	PED	215	14	8		22	0.10	0.01	18	6.6	69	Moderate	3.7	2.9	3.2	VAL-BISSON DOORMAN
S3440	DENOVO 7921 ATRIUM-ET	HO	GS	201	116	9	23	PED	482	29	17		46	0.16	0.01	2	5.3	48	Low	2.7	2.5	2.3	ABS ACHIEVER-ET
S3368	DOUBLE W RANGER	HO	GS	182	97	41	19	PED	469	22	16		38	0.05	0.00	16	6.2	47	Moderate	3.6	2.6	3.7	S-S-I MOGUL REFLECTOR
S1664	GEHRKE JOHAN DERAY	HO	DP-IRL	149	43	63	13	PED	197	7	8		15	-0.02	0.02	217	5.4	85	Low	2.1	2.1	1.4	UFM-DUBS SHERAC-ET
ZSR	HOANSTER ZANZIBAR	HO	DP-IRL	238	100	98	14	PED	526	16	19		36	-0.07	0.02	867	5.6	89	Low	1.4	1.5	0.1	RMW ARMITAGE
S3261	K+L LZ CONAN PP RED	HO	GS	179	90	40	23	PED	304	13	15		29	0.02	0.08	229	5.7	69	Low	1.6	1.7	0.1	RED ROCKS K+L LA SPEEDO
S3150	OCONNORS CLASSIC	HO	DP-INT	84	76	-20	19	PED	586	15	16		32	-0.12	-0.05	46	11.4	62	High	4.0	3.5	1.7	ZAHBULLS ALTA 1STCLASS-ET
FR4734	OH-RIVER-SYC CRUSHABULL-ET	HO	GS	16	54	-42	21	PED	428	9	13		21	-0.13	-0.03	43	13.2	62	High	4.4	4.3	2.2	MAVERICK CRUSH
FR4355	PINE-TREE FIREFLY-ET	HO	DP-INT	217	134	10	14	PED	389	31	18		49	0.25	0.08	180	3.9	61	Low	2.5	2.3	2.2	WOODCREST MOGUL YODER-ET
FR4107	POPPE RED HOT DARREL RED	HO	DP-IRL	156	110	20	27	PED	404	19	18		37	0.05	0.07	410	6.3	87	Low	2.1	1.9	1.5	TEXEL BEAUTY DEBUTANT
FR4751	PROGENESIS MOOSE	HO	GS	226	127	35	24	PED	679	26	23		49	0.00	0.00	191	5.2	62	Low	3.4	2.9	2.4	SILVERRIDGE V EUGENIO
FR5503	PROGENESIS STOXXINDEX	HO	GS	197	107	26	28	PED	633	19	21		40	-0.09	-0.01	0	6.9	46	Moderate	3.4	2.7	2.5	PROGENESIS PADAWAN
S3462	SANDY-VALLEY I BATMAN-ET	HO	GS	215	132	26	17	PED	603	27	22		49	0.06	0.03	16	5.0	52	Low	2.5	2.6	1.1	SILVERRIDGE V IMAX
S3249	SIEMERS BLOOMFIELD-ET	HO	DP-INT	178	97	53	21	PED	252	31	10		40	0.35	0.02	336	6.9	82	Moderate	3.2	3.3	1.4	MR MOGUL DELTA 1427-ET
S3134	STANTONS APPLICABLE	HO	DP-INT	164	74	35	30	PED	338	16	12		28	0.04	0.02	228	6.9	82	Moderate	5.0	4.0	4.1	SEAGULL-BAY SILVER-ET
S3311	STONE-FRONT ARTIST-ET	HO	GS	73	61	-23	30	PED	526	12	14		26	-0.14	-0.06	30	8.1	57	Moderate	3.3	3.6	0.4	MAVERICK CRUSH
S2068	SWISSBEC BREKEM	HO	DP-INT	151	98	23	9	PED	460	16	18		34	-0.04	0.04	52	6.2	57	Low	2.5	2.2	2.0	DE-SU 521 BOOKEM-ET
S1488	VAL-BISSON DOORMAN	HO	DP-IRL	130	79	4	30	PED	351	13	14		28	0.00	0.04	689	8.9	94	High	2.8	2.6	2.0	DE-SU 521 BOOKEM-ET
FR5581	VELDER STARMAKER	HO	GS	237	109	67	35	PED	352	22	16		38	0.13	0.07	0	5.9	49	Low	3.5	3.1	2.6	STANTONS ADORABLE
FR4419	WALNUTLAWN SIDEKICK	HO	GS	85	69	-25	20	PED	395	16	12		28	0.02	-0.02	79	4.7	68	Low	4.7	4.3	2.8	WILLSBRO ABBOTT
FR4187	WESTCOAST PERSEUS	HO	DP-IRL	224	121	46	19	PED	571	19	22		42	-0.05	0.05	4489	4.9	99	Low	3.6	3.4	2.0	SANDY-VALLEY-I PENMANSHIP
FR4368	WESTCOAST YAMASKA	HO	GS	228	149	38	19	PED	359	30	20		50	0.27	0.13	1716	7.4	94	Moderate	1.5	1.4	1.5	SANDY-VALLEY AFTERBURNER-ET
FR5509	WISSELVIEW WAVELENGTH	HO	GS	130	103	-23	24	PED	552	22	18		40	0.01	-0.01	0	7.7	49	Moderate	3.1	3.1	1.6	SILVERRIDGE V IMAX
<b>JERSEY</b>																							
S2298	COMESTAR JDF BEAUTIFULL ET	JE	DP-INT	92	5	35	10	0	-527	5	-9		-4	0.48	0.17	33	3.5	50	Low	2.7	1.3	4.4	SC GOLD DUST PARAMOUNT IATOLA
S3148	FDL BARCELONA	JE	GS	87	35	37	4	0	-279	7	-1		6	0.33	0.16	61	4.0	65	Low	1.0	0.2	2.2	JARS OF CLAY BARNABAS
S2297	GUIMO JOEL ET	JE	DP-INT	9	-12	14	-6	0	-610	0	-11		-12	0.43	0.18	31	3.6	45	High*	2.8	1.6	4.0	TOLLENAARS IMPULS LEGAL 233-ET
S3399	GUIMO JUDO	JE	GS	85	30	43	5	0	-359	9	-4		5	0.42	0.16	2	3.8	41	Low	2.7	1.2	4.5	DP NXLEVEL-ET
LTK	LENCREST ON TIME -ET	JE	DP-IRL	27	1	8	7	0	-497	-1	-7		-8	0.34	0.19	54	3.9	68	Low	3.8	2.4	5.0	SHF CENTURION SULTAN
JE4541	SUNSET CANYON DAZZLER-ET	JE	DP-INT	119	32	88	5	0	-343	10	-3		6	0.42	0.16	1	3.6	44	Low	2.5	1.0	4.4	HAWARDEN IMPULS PREMIER



PRE-ORDER

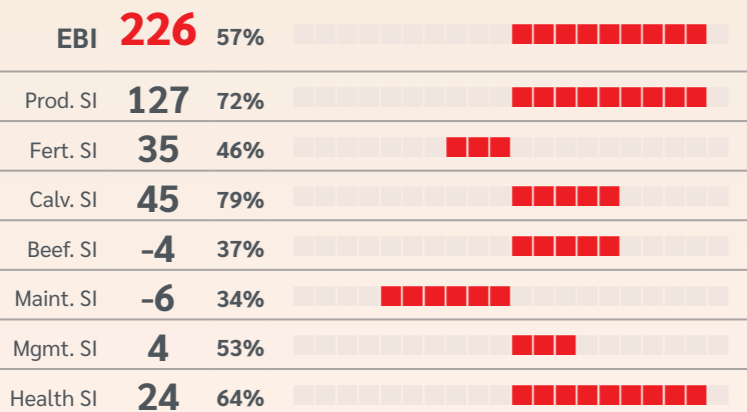
GENOMIC

# FR4751 PROGENESIS MOOSE

Birth Year: 2017    Beta Casein: AAA    Herd Book Number: HOLCANM000012719111  
 234156



EBI OCT. 20 SOURCE ICBF REL 10% 20% 30% 40% MEAN 40% 30% 20% 10%

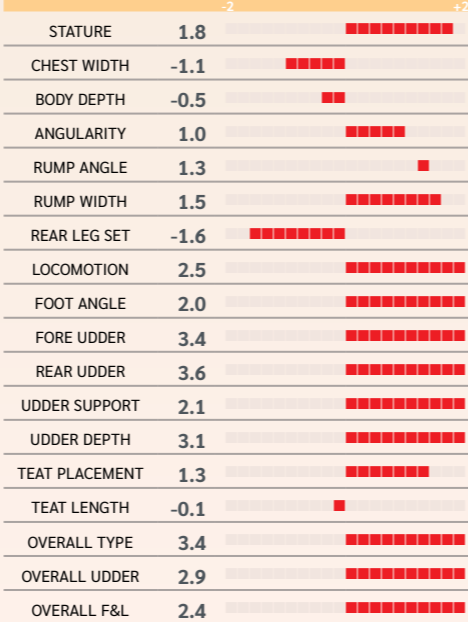


PRODUCTION					
Milk Kg	Fat Kg	Protein KG	Solid Kg	Fat %	Prot %
679	26	23	49	0.00	0.00

FERTILITY		CALVING DIFFICULTY			
Calving Interval	Survival	Records	Dairy Heifer Diff	Rel	Risk
-0.6	2.2	191	5.2	62%	Low

MANAGEMENT				DTRS	HERDS
Milk Speed	Temp	SCC	BCS	0	0
-32.0	-0.2	-0.17	-0.9		

LINEAR EVALUATION - INTERBULL 2020



- Fantastic production sire with great type
- Nearly 50kgs solids
- Ideal bull for Robot milking

SIRE: SILVERRIDGE V EUGENIO    MS: S-S-I PARTYROCK PROFIT-ET    MGS: S-S-I MOGUL DEFENDER-ET  
 DAM: PROGENESIS PROFIT MARGARITA    MD: WOODCREST DEF MANHATTAN-ET    MGD: S-S-I BOOKEM MARINA 7271

PRE-ORDER

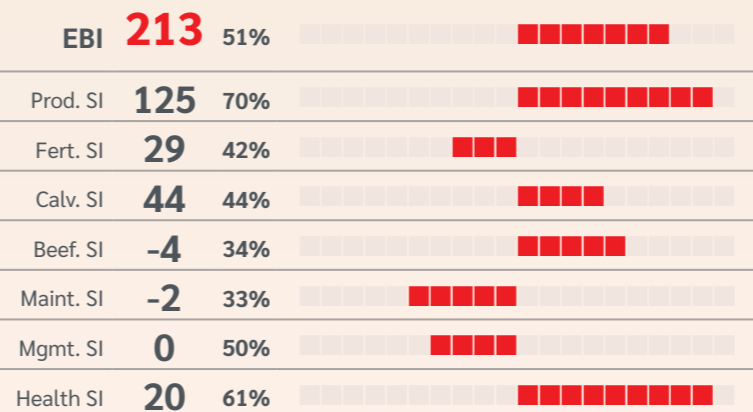
GENOMIC

# S3579 PROGENESIS WIMBLEDON

Birth Year: 2017    Beta Casein: A2A2    Herd Book Number: HOLCANM000012857898  
 423651



EBI OCT. 20 SOURCE ICBF REL 10% 20% 30% 40% MEAN 40% 30% 20% 10%

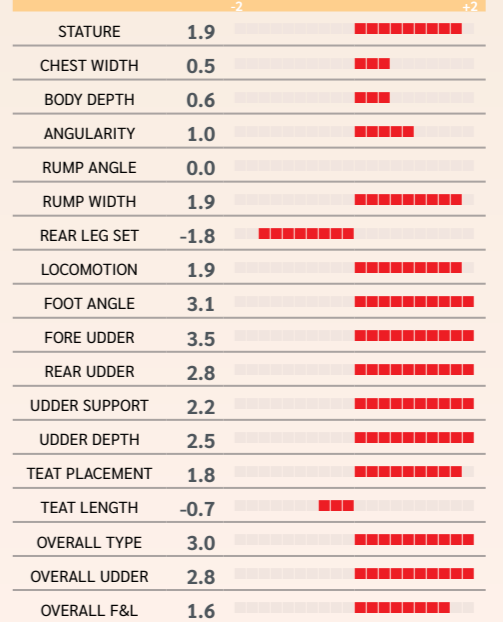


PRODUCTION					
Milk Kg	Fat Kg	Protein KG	Solid Kg	Fat %	Prot %
467	27	19	46	0.14	0.05

FERTILITY		CALVING DIFFICULTY			
Calving Interval	Survival	Records	Dairy Heifer Diff	Rel	Risk
-2.3	0.1	0	7.3	47%	Moderate

MANAGEMENT				DTRS	HERDS
Milk Speed	Temp	SCC	BCS	0	0
-15.4	-0.1	-0.18	0.5		

LINEAR EVALUATION - INTERBULL 2020



- He has it all, Type, Production and the Pedigree
- 46kgs Solids and positive components
- Exceptional for semen fertility

SIRE: BOMAZ ALTAROBSON    MS: MR MOGUL DENVER 1426    MGS: JEROD  
 DAM: TRAMILDA DENVER WHITNEY    MD: IHG WINNEY JEROD 55380 VG    MGD: WELCOME UNO WINNEY VG



PRE-ORDER

GENOMIC

# S3435 LEENHORSTER E-PROFIT

Birth Year: 2017    Beta Casein: A2A2    AAA 345216    Herd Book Number: HOLNLDM000671732952



Alex Arkink  
CRV



EBI OCT. 20 SOURCE ICBF	REL	10%	20%	30%	40%	MEAN	40%	30%	20%	10%
EBI <b>189</b>	51%									
Prod. SI <b>122</b>	68%									
Fert. SI <b>24</b>	40%									
Calv. SI <b>34</b>	51%									
Beef. SI <b>-17</b>	38%									
Maint. SI <b>-4</b>	34%									
Mgmt. SI <b>4</b>	49%									
Health SI <b>26</b>	59%									

LINEAR EVALUATION - INTERBULL 2020	
STATURE	-0.3
CHEST WIDTH	0.6
BODY DEPTH	0.0
ANGULARITY	0.0
RUMP ANGLE	3.0
RUMP WIDTH	0.2
REAR LEG SET	-1.4
LOCOMOTION	3.1
FOOT ANGLE	1.8
FORE UDDER	1.5
REAR UDDER	2.2
UDDER SUPPORT	2.2
UDDER DEPTH	0.4
TEAT PLACEMENT	1.8
TEAT LENGTH	1.0
OVERALL TYPE	2.6
OVERALL UDDER	1.7
OVERALL F&L	2.9

PRODUCTION					
Milk Kg	Fat Kg	Protein KG	Solid Kg	Fat %	Prot %
<b>406</b>	<b>22</b>	<b>19</b>	<b>41</b>	<b>0.10</b>	<b>0.09</b>

FERTILITY		CALVING DIFFICULTY			
Calving Interval	Survival	Records	Dairy	Heifer	Diff
<b>0.2</b>	<b>2.1</b>	<b>0</b>	<b>6.3</b>	<b>44%</b>	<b>Moderate</b>

MANAGEMENT				DTRS	HERDS
Milk Speed	Temp	SCC	BCS	<b>0</b>	<b>0</b>
<b>-12.3</b>	<b>0.0</b>	<b>-0.23</b>	<b>0.5</b>		

SIRE: DELTA MAGISTER	MS: DELTA BOOKEM DANO	MGS: DELTA G-FORCE
DAM: INEKE 130	MD: INEKE 121	MGD: INEKE 108

# HERD MANAGEMENT



- Milk Recording** - The only accurate way of measuring how your herd is performing.
- Herd Health** - Identify and manage what diseases are limiting your herd.
- Pregnancy Testing** - Convenient testing through milk recording samples with no extra work or handling of cows with a 95% accuracy

## INTRODUCING OUR NEW Milk Recording Lifetime Summary Report



- For the very first time, this new report will illustrate both **PROFITABILITY** and **PERFORMANCE** of cows within a herd.
- For the first time the **MILK RECORDED LIFETIME** information for the cow is available **AFTER EACH TEST**.
- For the first time dry days are included to rank cows.
- The Margin per day brings all of your milk recording data into one figure.

For more information on this new report, contact the Herd Management Team today 022 43228





PRE-ORDER

PROVEN

# S3134 STANTONS APPLICABLE

Birth Year: 2015  
Beta Casein: AAA  
324156

Herd Book Number:  
HOLCANM000012189029



PRE-ORDER

PROVEN

# S3537 STANTONS ALLIGATOR-ET

Birth Year: 2015  
Beta Casein: AAA  
432516

Herd Book Number:  
HOL840M003128769279



## EBI OCT. 20 SOURCE ICBF

	REL	10%	20%	30%	40%	MEAN	40%	30%	20%	10%	
EBI	164	78%	[Progress bar]								
Prod. SI	74	90%	[Progress bar]								
Fert. SI	35	79%	[Progress bar]								
Calv. SI	36	83%	[Progress bar]								
Beef. SI	-3	66%	[Progress bar]								
Maint. SI	-17	42%	[Progress bar]								
Mgmt. SI	9	60%	[Progress bar]								
Health SI	30	76%	[Progress bar]								

## PRODUCTION

Milk Kg	Fat Kg	Protein KG	Solid Kg	Fat %	Prot %
338	16	12	28	0.04	0.02

## FERTILITY

Calving Interval	Survival
-1.1	1.7

## CALVING DIFFICULTY

Records	Dairy	Heifer	Diff	Rel	Risk
228	6.9	82%	Moderate		

## MANAGEMENT

Milk Speed	Temp	SCC	BCS
-26.0	0.0	-0.2	0.3

## LINEAR EVALUATION - INTERBULL 2020

STATURE	2.1	[Progress bar]
CHEST WIDTH	0.0	[Progress bar]
BODY DEPTH	0.7	[Progress bar]
ANGULARITY	1.1	[Progress bar]
RUMP ANGLE	0.2	[Progress bar]
RUMP WIDTH	1.1	[Progress bar]
REAR LEG SET	-1.9	[Progress bar]
LOCOMOTION	5.6	[Progress bar]
FOOT ANGLE	3.1	[Progress bar]
FORE UDDER	5.5	[Progress bar]
REAR UDDER	4.6	[Progress bar]
UDDER SUPPORT	3.8	[Progress bar]
UDDER DEPTH	5.3	[Progress bar]
TEAT PLACEMENT	2.0	[Progress bar]
TEAT LENGTH	-3.3	[Progress bar]
OVERALL TYPE	5.0	[Progress bar]
OVERALL UDDER	4.0	[Progress bar]
OVERALL F&L	4.1	[Progress bar]

- Super reports on first daughters milking worldwide
- First 36 heifers classified average VG85
- Super Udders - protect for teat length

SIRE: SEAGULL-BAY SILVER-ET MS: DE-SU BKM MCCUTCHEN 1174 MGS: DE-SU OBSERVER  
DAM: STANTONS MCCUTCHEN 1174 AGREE (VG 88) MD: STANTONS OBSERVER EXTREME VG MGD: WABASH-WAY BOL ELIZABETH (VG 87)

## EBI OCT. 20 SOURCE ICBF

	REL	10%	20%	30%	40%	MEAN	40%	30%	20%	10%	
EBI	158	70%	[Progress bar]								
Prod. SI	91	91%	[Progress bar]								
Fert. SI	15	68%	[Progress bar]								
Calv. SI	37	57%	[Progress bar]								
Beef. SI	-2	44%	[Progress bar]								
Maint. SI	-15	41%	[Progress bar]								
Mgmt. SI	8	58%	[Progress bar]								
Health SI	24	73%	[Progress bar]								

## PRODUCTION

Milk Kg	Fat Kg	Protein KG	Solid Kg	Fat %	Prot %
658	19	19	38	-0.10	-0.06

## FERTILITY

Calving Interval	Survival
0.5	1.7

## CALVING DIFFICULTY

Records	Dairy	Heifer	Diff	Rel	Risk
0	6.1	60%	Low		

## MANAGEMENT

Milk Speed	Temp	SCC	BCS
-0.8	0.2	-0.19	-0.6

SIRE: MORNINGVIEW MCC KINGBOY-ET MS: DE-SU BKM MCCUTCHEN 1174-ET MGS: DE-SU OBSERVER  
DAM: STANTONS MCCUTCHEN 1174 AGREE (VG 88) MD: STANTONS OBSERVER EXTREME VG MGD: WABASH-WAY BOL ELIZABETH (VG 87)



## LINEAR EVALUATION - INTERBULL 2020

STATURE	2.6	[Progress bar]
CHEST WIDTH	0.1	[Progress bar]
BODY DEPTH	1.4	[Progress bar]
ANGULARITY	2.0	[Progress bar]
RUMP ANGLE	-0.4	[Progress bar]
RUMP WIDTH	3.0	[Progress bar]
REAR LEG SET	-0.2	[Progress bar]
LOCOMOTION	3.7	[Progress bar]
FOOT ANGLE	2.1	[Progress bar]
FORE UDDER	4.1	[Progress bar]
REAR UDDER	5.2	[Progress bar]
UDDER SUPPORT	4.4	[Progress bar]
UDDER DEPTH	3.5	[Progress bar]
TEAT PLACEMENT	1.4	[Progress bar]
TEAT LENGTH	-1.2	[Progress bar]
OVERALL TYPE	4.1	[Progress bar]
OVERALL UDDER	3.8	[Progress bar]
OVERALL F&L	2.7	[Progress bar]

- Canada's Top Type Daughter Proven Sire +17 Final Class
- Half brother to Applicable
- Super udders



PRE-ORDER

PROVEN

# S3237 BRENLAND DENVER

Birth Year: 2016    Beta Casein: AAA    Herd Book Number: HOLCANM000012074893  
 2016    324



DAM

Patty J



EBI OCT. 20 SOURCE ICBF    REL    10%    20%    30%    40%    MEAN    40%    30%    20%    10%

EBI	<b>40</b>	57%	
Prod. SI	<b>68</b>	71%	
Fert. SI	<b>-21</b>	48%	
Calv. SI	<b>-17</b>	68%	
Beef. SI	<b>4</b>	41%	
Maint. SI	<b>-22</b>	37%	
Mgmt. SI	<b>7</b>	56%	
Health SI	<b>21</b>	68%	

LINEAR EVALUATION - INTERBULL 2020

STATURE	4.0	
CHEST WIDTH	0.5	
BODY DEPTH	2.7	
ANGULARITY	2.4	
RUMP ANGLE	-0.6	
RUMP WIDTH	5.6	
REAR LEG SET	0.0	
LOCOMOTION	1.8	
FOOT ANGLE	2.0	
FORE UDDER	4.5	
REAR UDDER	4.3	
UDDER SUPPORT	3.7	
UDDER DEPTH	4.0	
TEAT PLACEMENT	2.8	
TEAT LENGTH	-0.2	
OVERALL TYPE	3.0	
OVERALL UDDER	3.1	
OVERALL F&L	1.4	

**PRODUCTION**

Milk Kg	Fat Kg	Protein KG	Solid Kg	Fat %	Prot %
<b>548</b>	<b>13</b>	<b>15</b>	<b>28</b>	<b>-0.13</b>	<b>-0.05</b>

**FERTILITY**      **CALVING DIFFICULTY**

Calving Interval	Survival	Records	Dairy Heifer Diff	Rel	Risk
<b>2.5</b>	<b>0.8</b>	<b>21</b>	<b>11.0</b>	<b>58%</b>	<b>High</b>

**MANAGEMENT**

Milk Speed	Temp	SCC	BCS
<b>-4.8</b>	<b>0.2</b>	<b>-0.21</b>	<b>-1.6</b>

- First calved heifers already winning at Shows
- Available sexed
- Super Type with a super pedigree

SIRE: STANTONS HIGH OCTANE	MS: VAL-BISSON DOORMAN	MGS: MAPLE-DOWNS-I G W ATWOOD
DAM: BRENLAND DOORMAN DESIRABLE (VG 87)	MD: CO-VISTA ATWOOD DESIRE (EX 90)	MGD: SCIENTIFIC DELUXE RAE (EX 91)

# AI TECHNICIAN SERVICE



- Highly trained, experienced team
- Year round service
- Covering your local area
- Use the best technicians and the best techniques



In these unprecedented times, rest assured our AI service will continue.

## AI Technician Customers: Help Us to Help You During COVID 19



AVOID FACE TO FACE CONTACT WITH YOUR AI TECHNICIAN WHEN THEY ARE ON FARM



MAXIMISE USE OF MOBILE PHONE

AI 10/04  
 0635 - LWR  
 1272 - HE2043  
 1742 - FR2079

HAVE A DESIGNATED AREA FOR INSTRUCTION AS TO WHAT COWS ARE TO BE INSEMINATED AND WITH WHAT SIRES ENSURING NO PERSONAL CONTACT





PRE-ORDER

GENOMIC

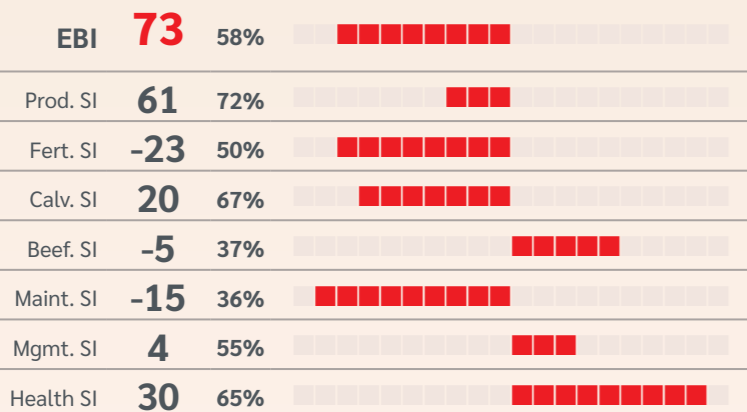
# S3311 STONE-FRONT ARTIST-ET

Birth Year: 2016    Beta Casein: AAA    Herd Book Number: HOL840M003136876946  
324

Start Your Collection today!



EBI OCT. 20 SOURCE ICBF REL 10% 20% 30% 40% MEAN 40% 30% 20% 10%



### PRODUCTION

Milk Kg	Fat Kg	Protein KG	Solid Kg	Fat %	Prot %
526	12	14	26	-0.14	-0.06

FERTILITY		CALVING DIFFICULTY					
Calving Interval	Survival	Records	Dairy	Heifer	Diff	Rel	Risk
2.7	0.9	30	8.1	57%	Moderate		

MANAGEMENT				DTRS	HERDS
Milk Speed	Temp	SCC	BCS	0	0
4.5	0.2	-0.29	-1.7		

SIRE: MAVERICK CRUSH    MS: DE-SU BKM MCCUTCHEN 1174    MGS: LONG-LANGS OMAN OMAN TV TL TY  
DAM: TJR ARIETA MCCUT 2256-ET (EX 92)    MD: MS ARIEL MOMAN ARITA (EX 92)    MGD: MS ATLEES GOLDWYN ARIEL-ET (EX 92)

### LINEAR EVALUATION - INTERBULL 2020

STATURE	3.7	■■■■■■■■■■
CHEST WIDTH	-0.3	■
BODY DEPTH	2.1	■■■■■■■■■■
ANGULARITY	1.8	■■■■■■■■■■
RUMP ANGLE	-0.8	■■■■
RUMP WIDTH	3.8	■■■■■■■■■■
REAR LEG SET	0.3	■
LOCOMOTION	1.4	■■■■■■■■■■
FOOT ANGLE	0.8	■■■■■■■■■■
FORE UDDER	5.2	■■■■■■■■■■
REAR UDDER	4.0	■■■■■■■■■■
UDDER SUPPORT	3.4	■■■■■■■■■■
UDDER DEPTH	5.2	■■■■■■■■■■
TEAT PLACEMENT	2.0	■■■■■■■■■■
TEAT LENGTH	-1.0	■■■■
OVERALL TYPE	3.3	■■■■■■■■■■
OVERALL UDDER	3.6	■■■■■■■■■■
OVERALL F&L	0.4	■■■■■■■■■■

- From the Adeen family
- Available Sexed
- Breed your next champion

PRE-ORDER

PROVEN

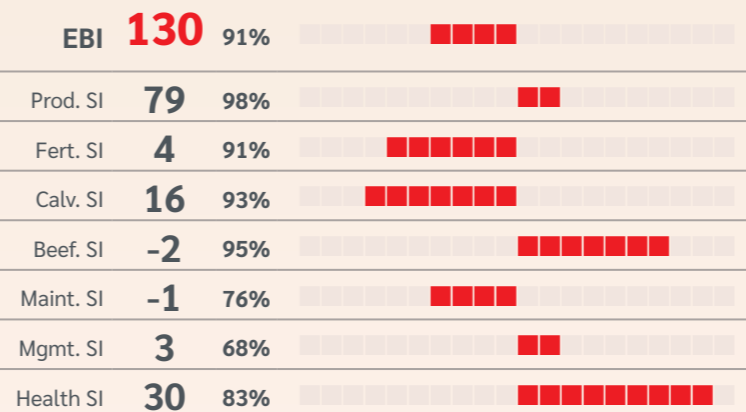
# S1488 VAL-BISSON DOORMAN

Birth Year: 2011    Beta Casein: A2A2    Herd Book Number: HOLCANM000107281711  
234615

LIMITED



EBI OCT. 20 SOURCE ICBF REL 10% 20% 30% 40% MEAN 40% 30% 20% 10%



### PRODUCTION

Milk Kg	Fat Kg	Protein KG	Solid Kg	Fat %	Prot %
351	13	14	28	0.00	0.04

FERTILITY		CALVING DIFFICULTY					
Calving Interval	Survival	Records	Dairy	Heifer	Diff	Rel	Risk
1.6	1.9	689	8.9	94%	High		

MANAGEMENT				DTRS	HERDS
Milk Speed	Temp	SCC	BCS	81	214
4.3	0.1	-0.31	-0.7		

SIRE: DE-SU 521 BOOKEM-ET    MS: PICSTON SHOTTLE    MGS: BRAEDAILE GOLDWYN  
DAM: VAL-BISSON SHOTTLE IMELDA (EX 94)    MD: VAL-BISSON GOLDWYN MAYA (VG 88)    MGD: VAL-BISSON FINLEY DREAM (VG 87)

### LINEAR EVALUATION - INTERBULL 2020

STATURE	2.6	■■■■■■■■■■
CHEST WIDTH	0.2	■
BODY DEPTH	2.0	■■■■■■■■■■
ANGULARITY	1.6	■■■■■■■■■■
RUMP ANGLE	-1.7	■■■■■■
RUMP WIDTH	2.9	■■■■■■■■■■
REAR LEG SET	0.6	■■■
LOCOMOTION	2.8	■■■■■■■■■■
FOOT ANGLE	0.5	■■■
FORE UDDER	3.9	■■■■■■■■■■
REAR UDDER	3.0	■■■■■■■■■■
UDDER SUPPORT	2.1	■■■■■■■■■■
UDDER DEPTH	2.8	■■■■■■■■■■
TEAT PLACEMENT	3.0	■■■■■■■■■■
TEAT LENGTH	-0.7	■■■■
OVERALL TYPE	2.8	■■■■■■■■■■
OVERALL UDDER	2.6	■■■■■■■■■■
OVERALL F&L	2.0	■■■■■■■■■■

- One of the world's top Type Sires
- Unfortunately Doorman is dead so this is your last opportunity to use him
- Semen Limited (1st come 1st serve)



PRE-ORDER

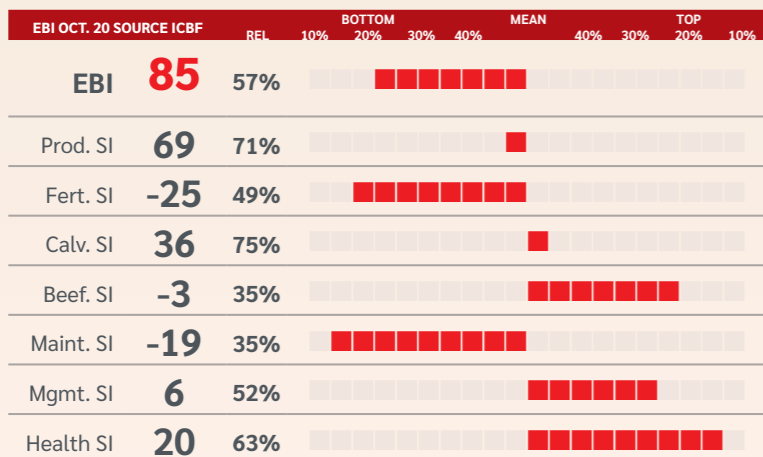
PROVEN

# FR4419 WALNUTLAWN SIDEKICK

Birth Year: 2016    Beta Casein: A2A2    AAA 312546    Herd Book Number: HOLCANM000012508113



BLONDIN SIDEKICK COOL VG87 2YR



### LINEAR EVALUATION - INTERBULL 2020

STATURE	3.0	[Progress bar]
CHEST WIDTH	0.4	[Progress bar]
BODY DEPTH	2.2	[Progress bar]
ANGULARITY	2.1	[Progress bar]
RUMP ANGLE	-1.5	[Progress bar]
RUMP WIDTH	3.1	[Progress bar]
REAR LEG SET	0.1	[Progress bar]
LOCOMOTION	4.1	[Progress bar]
FOOT ANGLE	1.7	[Progress bar]
FORE UDDER	6.3	[Progress bar]
REAR UDDER	4.5	[Progress bar]
UDDER SUPPORT	3.8	[Progress bar]
UDDER DEPTH	4.7	[Progress bar]
TEAT PLACEMENT	1.7	[Progress bar]
TEAT LENGTH	-0.8	[Progress bar]
OVERALL TYPE	4.7	[Progress bar]
OVERALL UDDER	4.3	[Progress bar]
OVERALL F&L	2.8	[Progress bar]

### PRODUCTION

Milk Kg	Fat Kg	Protein KG	Solid Kg	Fat %	Prot %
395	16	12	28	0.02	-0.02

### FERTILITY

Calving Interval	Survival	Records	Dairy Heifer Diff	Rel	Risk
2.4	0.4	30	4.7	68%	Low

### MANAGEMENT

Milk Speed	Temp	SCC	BCS
-14.2	0.0	-0.1	-0.7

- Awesome Type bull
- 1st heifers calving in look exceptional
- Ideal for robot milking

SIRE: WILLSBRO ABBOTT    MS: DE-SU BKM MCCUTCHEN 1174    MGS: COMESTAR LAVANGUARD  
 DAM: WALNUTLAWN MCCUTCHEN SUMMER (EX 94)    MD: MISTY SPRINGS LAVANGUARD SUE (VG 89)    MGD: MISTY SPRINGS FBI SUZANNE (VG 87)

# Beef Sires for the Dairy Herd



Bull	Name	Breed	Dairy Cow Calv diff	Dairy Cow Calv diff Rel	Gestation (Days)	Carcass Wgt	Carcass Conf	Use on
AA4088	INTELAGRI MAVERICK E.T. (ET)	AA	3.10%	99%	-3.3	6.2 kg	0.63	2nd calvers
AA4640	HW FARGHAL T516	AA	3.20%	94%	-0.6	14.6 kg	0.66	2nd calvers
AA4089	INTELAGRI MATTEO E.T. (ET)	AA	2.50%	99%	-3.9	5.6 kg	0.72	Maidens
AA4632	SALLOWGLEN JAMIE T771	AA	2.20%	90%	-2.8	4.4 kg	0.71	Maidens
AA6331	DEELISH SHOTGUN	AA	3.00%	51%	-1.2	14.9 kg	0.85	Cows
AU4683	TURLOUGHMORE MAGNIFICENT	AU	4.20%	82%	0.8	21.5 kg	2.21	Cows
BB4369	COOLBANAGHER KING	BB	7.20%	87%	2.1	19.3 kg	2.54	Mature cows
BB5226	MARIUS DES PRINCES DE LIGNE	BB	11%	67%	-1.1	22.7 kg	2.19	Mature cows
BB6343	RIAN 33 VAN DE PLASHOEVE	BB	10%	39%	-0.3	23.6 kg	2.26	Mature cows
HE5346	FISHER 1 PROFILE P456	HE	3.10%	82%	-2.0	10.2 kg	0.58	2nd Calvers
HE4297	FABB 1 NORTHERN STAR	HE	3.70%	98%	-1.8	0.4 kg	0.57	2nd Calvers
HE4291	ALLOWDALE ADVANCE 573 ET	HE	4.40%	98%	-0.3	7.8 kg	0.5	Cows
HE6364	SOLPOLL 1 SONIC	HE	3.90%	49%	0.3	2.1 kg	0.58	Cows
LM4217	MOONDHARRIG KNELL	LM	5.10%	96%	2.8	20.1 kg	2.05	Mature cows
ZAG	CASTLEVIEW GAZELLE	LM	4.50%	99%	4.0	19.3 kg	2.17	Mature cows
SI2469	LISNACRANN FIFTY CENT	SI	6.30%	96%	0.6	17.8 kg	1.19	Cows

SHORT GESTATION - CALVING EASE - CALF/CARCASS VALUE



# Sexed Options

Code	NAME	BRD	EBI	Prod SI	Fert SI	HFH CAT	MILK KG	FAT KG	PROT KG	SOLIDS KGS	FAT %	PROT %	UDDER	FEET & LEGS
<b>HOLSTEIN</b>														
FR4738	(IG) BALLYMAW NOVA SRM	HO	239	98	85	SRM	208	18	14	31	0.16	0.11	-0.9	0.0
FR2449	(IG) CHERRYHILL SEACHT	HO	204	89	91	PED	78	11	12	24	0.14	0.17	-0.9	-1.8
FR5187	(IG) CURRA SCOOPY	HO	197	103	59	PED	203	13	16	29	0.09	0.15	-0.9	0.1
FR4337	(IG) GABRIEL ZORO	HO	243	102	89	SRM	3	11	13	25	0.20	0.23	-1.1	-0.9
FR5593	(IG) OAKGLEN COSMIC	HO	238	103	86	PED	200	22	13	35	0.24	0.10	-0.4	-0.9
FR4482	(IG) SPRINGHAVEN SUPREME	HO	274	88	138	PED	182	12	13	26	0.09	0.12	-0.7	0.1
FR5971	(IG) VIADUCTVIEW FIVEO	HO	251	97	104	PED	190	22	12	33	0.24	0.09	0.4	0.1
FR4481	(IG) MONABROGUE EBONY	GS	210	109	63	PED	291	15	18	33	0.06	0.13	0.9	0.5
FR4600	(IG) CLORANE DANDYMAN	GS	€229	103	58	PED	236	14	16	30	0.09	0.13	-1.2	-0.7
FR4239	CURRA LIGHTNING	HO	177	37	116	PED	-26	8	3	11	0.16	0.07	-0.3	0.4
S2110	DE-SU 11228 TOPSY-ET	HO	94	112	-52	PED	625	19	22	41	-0.08	0.01	1.8	0.7
FR4688	DE-SU 14118 REGINALD-ET	HO	203	88	71	PED	509	21	15	36	0.02	-0.03	2.2	3.6
S1664	GEHRKE JOHAN DERAY	HO	149	43	63	PED	197	7	8	15	-0.02	0.02	2.1	1.4
S3462	SANDY-VALLEY I BATMAN-ET	HO	215	132	26	PED	603	27	22	49	0.06	0.03	2.6	1.1
S1665	SCIENTIFIC DARYL-ET	HO	31	44	-31	PED	419	7	11	19	-0.14	-0.05	2.5	2.1
S3249	SIEMERS BLOOMFIELD-ET	HO	178	97	53	PED	252	31	10	40	0.35	0.02	3.3	1.4
FR2257	TOPCROFT PESKY TRIX	HO	134	61	46	PED	263	10	11	21	-0.01	0.03	2.2	1.3
S1579	WELCOME ARMITAGE PESKY-ET	HO	140	85	20	PED	412	14	16	30	-0.04	0.03	1.5	0.7
FR4187	WESTCOAST PERSEUS	HO	224	121	46	PED	571	19	22	42	-0.05	0.05	3.4	2.0
FR4368	WESTCOAST YAMASKA	HO	228	149	38	PED	359	30	20	50	0.27	0.13	1.4	1.5
FR5509	WISSELVIEW WAVELENGTH	HO	130	103	-23	PED	552	22	18	40	0.01	-0.01	3.1	1.6
	DENOVO 2800 PRINCE-ET	GS	260	141	56	PED	467	32	20	52	0.22	0.07	2.5	2.2
	DENOVO 15551 SUBLIME-ET	GS	259	112	52	PED	437	28	16	44	0.18	0.02	2.7	2.7
	KOEPOON RAPTOR	GS	239	132	38	PED	545	29	20	50	0.13	0.03	3.1	2.4
	DENOVO 3159 GANDER-ET	GS	187	114	12	PED	475	22	19	41	0.06	0.05	2.0	1.5
<b>SHOW STOPPERS</b>														
S3237	BRENLAND DENVER	HO	40	68	-21	PED	548	13	15	28	-0.13	-0.05	3.1	1.4
S3480	DE-SU 14673 APPEAL	HO	221	113	35	PED	498	25	18	43	0.08	0.02	4.2	2.2
FR2095	DENMIRE MESDOOR-ET	HO	142	57	32	PED	215	14	8	22	0.10	0.01	2.9	3.2
FR4734	OH-RIVER-SYC CRUSHABULL-ET	HO	16	54	-42	PED	428	9	13	21	-0.13	-0.03	4.3	2.2
S3311	STONE-FRONT ARTIST-ET	HO	73	61	-23	PED	526	12	14	26	-0.14	-0.06	3.6	0.4
S1488	VAL-BISSON DOORMAN	HO	130	79	4	PED	351	13	14	28	0.00	0.04	2.6	2.0
FR4419	WALNUTLAWN SIDEKICK	HO	85	69	-25	PED	395	16	12	28	0.02	-0.02	4.3	2.8
<b>POLLED</b>														
FR5599	DELTA BUILDER P	HO	187	107	38	PED	571	21	19	41	-0.01	0.00	2.6	2.3
S3261	K+L LZ CONAN PP RED	HO	179	90	40	PED	304	13	15	29	0.02	0.08	1.7	0.1
<b>RED BULLS</b>														
S3331	DELTA ROSEBUD-RED	HO	134	68	32	PED	288	6	14	20	-0.08	0.07	2.3	1.2
S3261	K+L LZ CONAN PP RED	HO	179	90	40	PED	304	13	15	29	0.02	0.08	1.7	0.1
<b>JERSEY</b>														
S3148	FDL BARCELONA	JE	87	35	37	0	-279	7	-1	6	0.33	0.16	0.2	2.2
S3399	GUIMO JUDO	JE	85	30	43	0	-359	9	-4	5	0.42	0.16	1.2	4.5
JE4762	VJ BALSLEV LOBO CHOKO	JE	82	48	27	0	-603	13	-6	7	0.70	0.29	0.7	4.1
S3178	VJ HITMAN	JE	118	53	53	0	-444	8	-1	7	0.48	0.27	0.9	4.1
S3585	VJ TUDVAD SAMSON STENO	GS	135	85	21	0	-253	21	3	24	0.56	0.21	0.6	3.9
S3576	VJ KJOELBY GISLEV GUTZ	GS	113	53	46	0	-414	14	-2	11	0.56	0.22	0.9	4.0



## Heat Detection Aids



Roll of 100 E-alert patches plus glue



Heat Detection Tags (available in packs of 50)



CHINBALL HARNESS (for vasectomised bull) 2.5L paint for harness

FIL TAIL PAINT



DULUX TAIL PAINT



Paintsticks (12 per box)



**MUNSTER BOVINE**

Collectively Improving Farm Life

**Giving you access to the world's largest breeding programmes**



If you are interested in a bull that is not featured in our brochure from any of our agencies we will do our best to fill your specific requirements.

Orders are placed at the start and middle of each month. Allow 6 weeks for delivery.



# OUR TEAM

Farm Relationship Managers. *For breeding advice & technician service queries.*



Michael Clohessy  
**086 6054723**  
*Limerick*



Jerome Leen  
**087 2529895**  
*Kerry, North Cork*



Enda O'Gorman  
**086 8352700**  
*Clare & Galway*



Eustace Burke  
**086 0274558**  
*South Cork*



Joe O'Flynn  
**086 4030646**  
*North Cork,  
Cork City North*



Declan Keating  
**086 8164024**  
*West Cork*



Brendan Scully  
**086 4126727**  
*East Cork,  
West Waterford,*

## Breeding Advisors.



Joe Tobin  
**086 8125441**  
*East Cork,  
West Waterford,  
Tipperary*



James Egan  
**086 3650665**  
*North Kerry*



Ben Slee  
**087 2902031**  
*Tipperary*



Kevin Dillon  
**086 2583513**  
*West Cork*



Tom Tobin  
**087 2758061**  
*Cork City South*



Anthony Buckley  
**086 344 0642**  
*West Cork*



Donal Coppinger  
**087 3159166**  
*Galway*



**MUNSTER  
BOVINE**

Collectively Improving Farm Life

### A.I. Calls

Dairygold 1850 500 321  
Bandon 023 883 2828  
Kerry/Clare & Galway 1890 28 1000

### Main Office

Ballyvorisheen, Mallow, Co. Cork  
t 022 43228 e info@munsterbovine.ie  
w www.munsterbovine.ie

