

## Short Gestation - High Fertility Sires



*Give your bull a chance*

1 young bull to 10 - 15 females

Older Bulls 1:20 - 30 females

Help him out keep inseminating until the ratio is right

Source ICBF May 2020

Bull	Name	Cat	EBI	Milk SI	Fert SI	Maint SI	Milk	Fat	Protein	Solids	Fat %	Protein %	Gestation
FR5208	(IG) PALLASKENRY ARCO SRM	SRM	<b>€350</b>	€66	€219	€23	-132	13	5	18	0.32	0.16	<b>-3.7 days</b>
FR4582	(IG) FOXVIEW BOND	SRM	<b>€322</b>	€73	€183	€12	95	12	10	22	0.14	0.11	<b>-5.4 days</b>
FR4738	(IG) BALLYMAW NOVA SRM	SRM	<b>€289</b>	€93	€138	€13	126	18	11	29	0.21	0.13	<b>-4.8 days</b>
FR5593	(IG) OAKGLEN COSMIC	PED	<b>€277</b>	€99	€129	€5	169	21	12	33	0.24	0.11	<b>-4.2 days</b>
FR4337	(IG) GABRIEL ZORO	SRM	<b>€275</b>	€97	€127	€7	-27	10	12	23	0.19	0.23	<b>-4.7 days</b>
FR4548	(IG) CAPPASOUTH KAPRI	PED	<b>€265</b>	€83	€127	€15	18	9	11	20	0.13	0.19	<b>-5.7 days</b>
FR5533	(IG) BALLYMAW BEAR SRM	SRM	<b>€264</b>	€111	€88	€12	288	18	17	35	0.11	0.12	<b>-5.3 days</b>
FR4600	(IG) CLORANE DANDYMAN	PED	<b>€259</b>	€93	€103	€16	137	13	14	26	0.12	0.15	<b>-4.8 days</b>
FR4758	(IG) ROSSBARRY NELSON SRM	SRM	<b>€256</b>	€104	€105	€2	218	14	16	30	0.09	0.15	<b>-4.8 days</b>
FR4338	(IG) CRAIGTOWN TORNADO	SRM	<b>€252</b>	€58	€121	€19	-183	11	3	14	0.32	0.17	<b>-5.9 days</b>
FR4746	(IG) FOWLERSTOWN CONTI	PED	<b>€250</b>	€76	€127	€2	226	16	11	27	0.12	0.06	<b>-4.9 days</b>

# BEEF FOR THE DAIRY HERD

security of calving ease



short gestation



beef value maximised



AA4089 INTELAGRI MATTEO E.T.

## ANGUS

Bull	Name	Beef Value	Calving Value	Gestation	Dairy Cow Cdiff	Dairy Cow Cdiff Rel	Dairy Heifer Cdiff	Dairy Heifer Cdiff Rel	DBI	DBI Rel	Use on
AA4089	INTELAGRI MATTEO E.T.	€37	€65	-4.1 days	2.5%	98%	6.5%	98%	€102	94%	Maiden Heifers
AA4632	SALLOWGLEN JAMIE T771	€47	€55	-2.8 days	2.4%	89%	5.6%	65%	€102	67%	Maiden Heifers
AA4631	GABRIEL PAT 1949	€49	€60	-2.8 days	2.0%	87%	5.6%	64%	€109	67%	Maiden Heifers



AA4640 HW FARGHAL T516

Bull	Name	Beef Value	Calving Value	Gestation	Dairy Cow Cdiff	Dairy Cow Cdiff Rel	Dairy Heifer Cdiff	Dairy Heifer Cdiff Rel	DBI	DBI Rel	Use on
AA5280	COOLRAIN PATRIARCH	€64	€51	-2.5 days	2.6%	81%	6%	55%	€115	62%	Cows
AA4640	HW FARGHAL T516	€60	€21	-0.8 days	3.2%	93%	11%	59%	€81	69%	Cows
AA2309	ST AODAIN L MASTER	€53	€3	-0.1 days	4.2%	96%	11%	88%	€56	94%	Cows

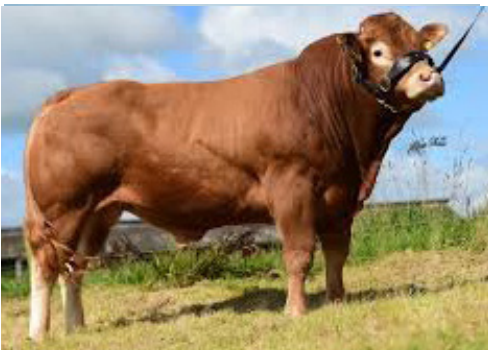
# BEEF FOR THE DAIRY HERD



## HEREFORD

Bull	Name	Beef Value	Calving Value	Gestation	Dairy Cow Cdiff	Dairy Cow Cdiff Rel	Dairy Heifer Cdiff	Dairy Heifer Cdiff Rel	DBI	DBI Rel	Use on
HE4643	MOORSIDE 1 PANDA {{HYF}}	€43	€6	-0.2 days	4.1%	95%	12%	41%	€49	64%	2nd Calvers
HE4297	FABB 1 NORTHERN STAR {HYF}	€47	€30	-1.9 days	3.7%	98%	9.3%	65%	€76	89%	2nd Calvers
HE4291	ALLOWDALE ADVANCE 573 ET	€44	€3	-0.4 days	4.3%	98%	12%	61%	€47	90%	Cows

HE4297 Fabb 1 Northern Star PP



## AUBRAC

AU4683	TURLOUGHMORE MAGNIFICENT	€128	€7	0.79 days	4%	77%	9.1%	37%	€135	62%	Cows
--------	-----------------------------	------	----	-----------	----	-----	------	-----	------	-----	------

LM4217 MOONDHARRIG KNELL



## BELGIAN BLUE

BB4286	IDEAL DE PETIT WARET	€140	-€52	-0.9 days	7.8%	97%	14%	32%	€88	84%	Mature Cows
BB2083	RACHID DE REMICHAMPAGNE	€128	-€100	0.4 days	9.2%	98%	16%	57%	€28	91%	Mature Cows
BB4369	COOLBANAGHER KING	€122	-€63	2.1 days	7.1%	86%	14%	29%	€59	67%	Mature Cows

AU4683 TURLOUGHMORE MAGNIFICENT



## LIMOUSIN

LM4217	MOONDHARRIG KNELL	€126	-€21	3 days	4.90%	95%	9.4%	58%	€106	91%	Cows
ZAG	CASTLEVIEW GAZELLE	€127	-€23	4 days	4.50%	99%	9.1%	92%	€104	97%	Cows

BB4369 COOLBANAGHER KING